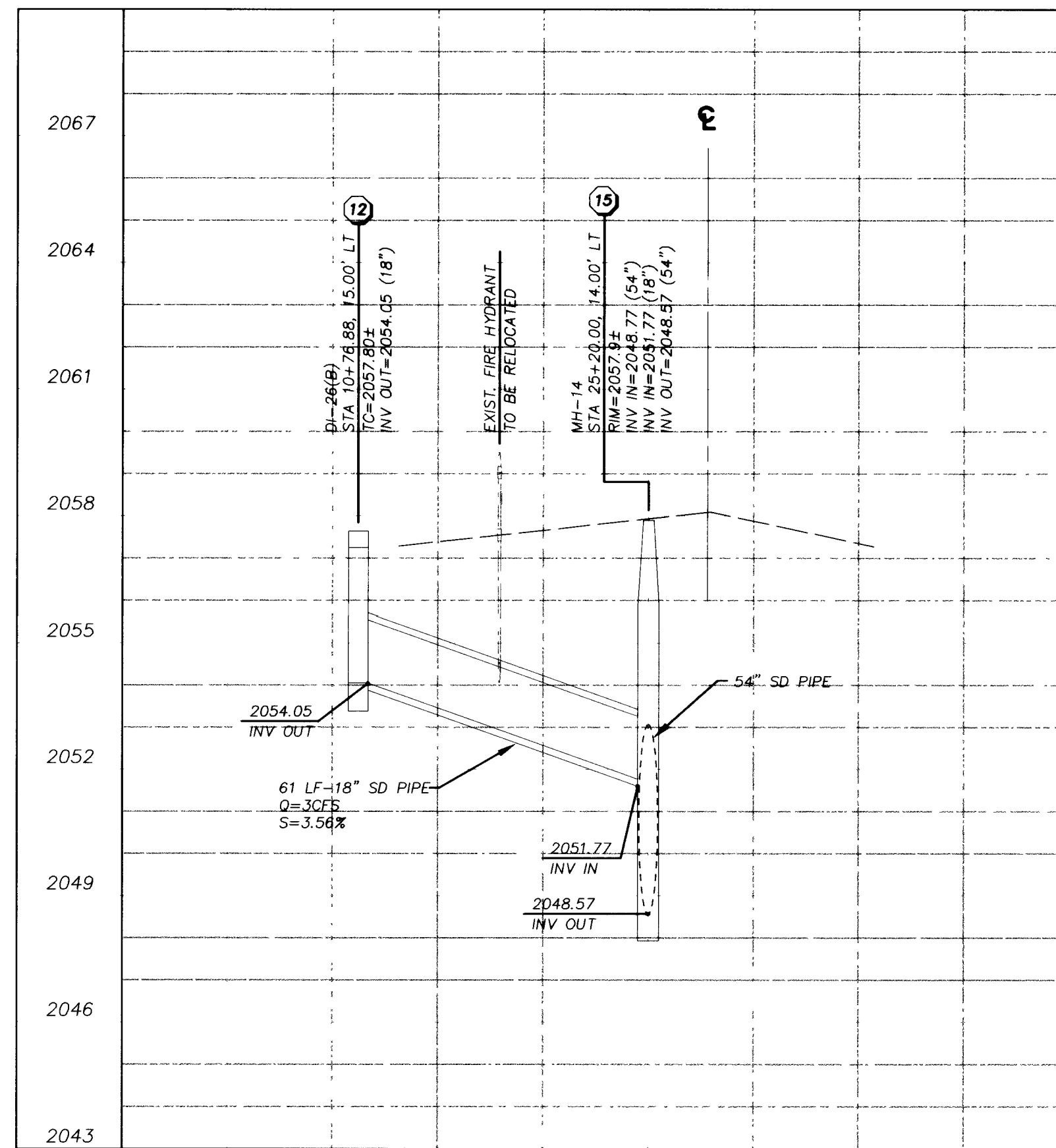
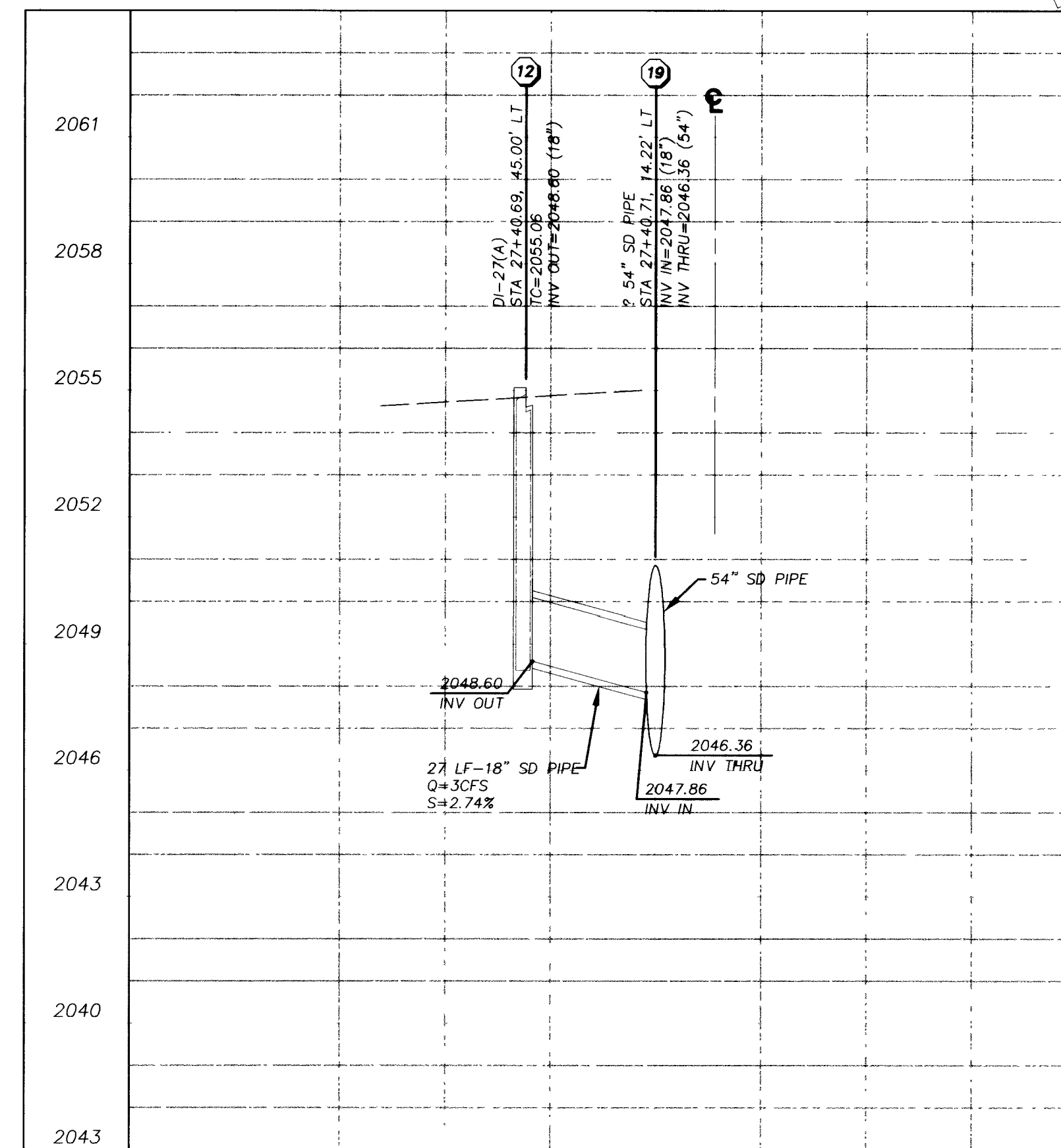


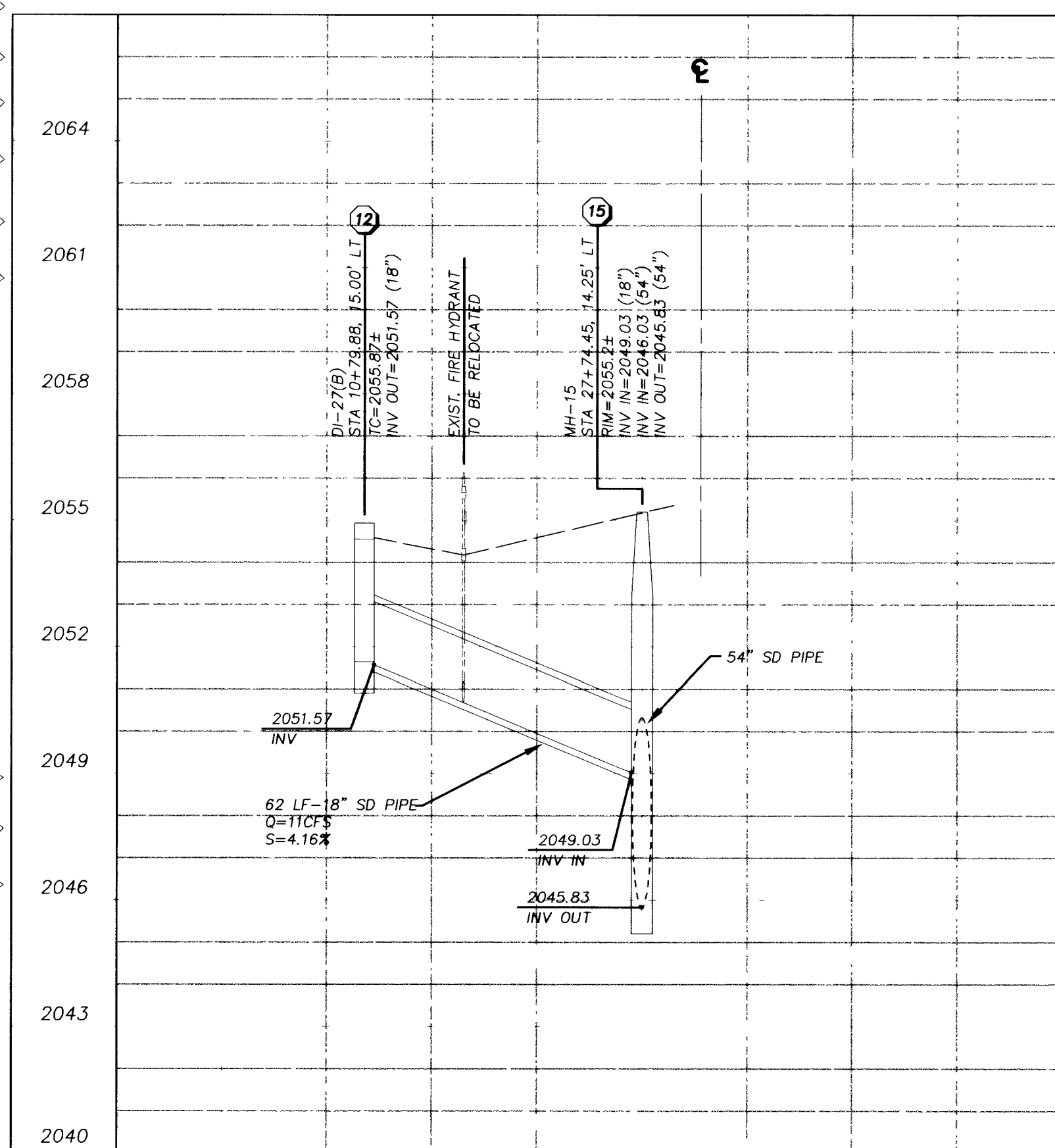
DI - 26 (A) STA. 24+77.80



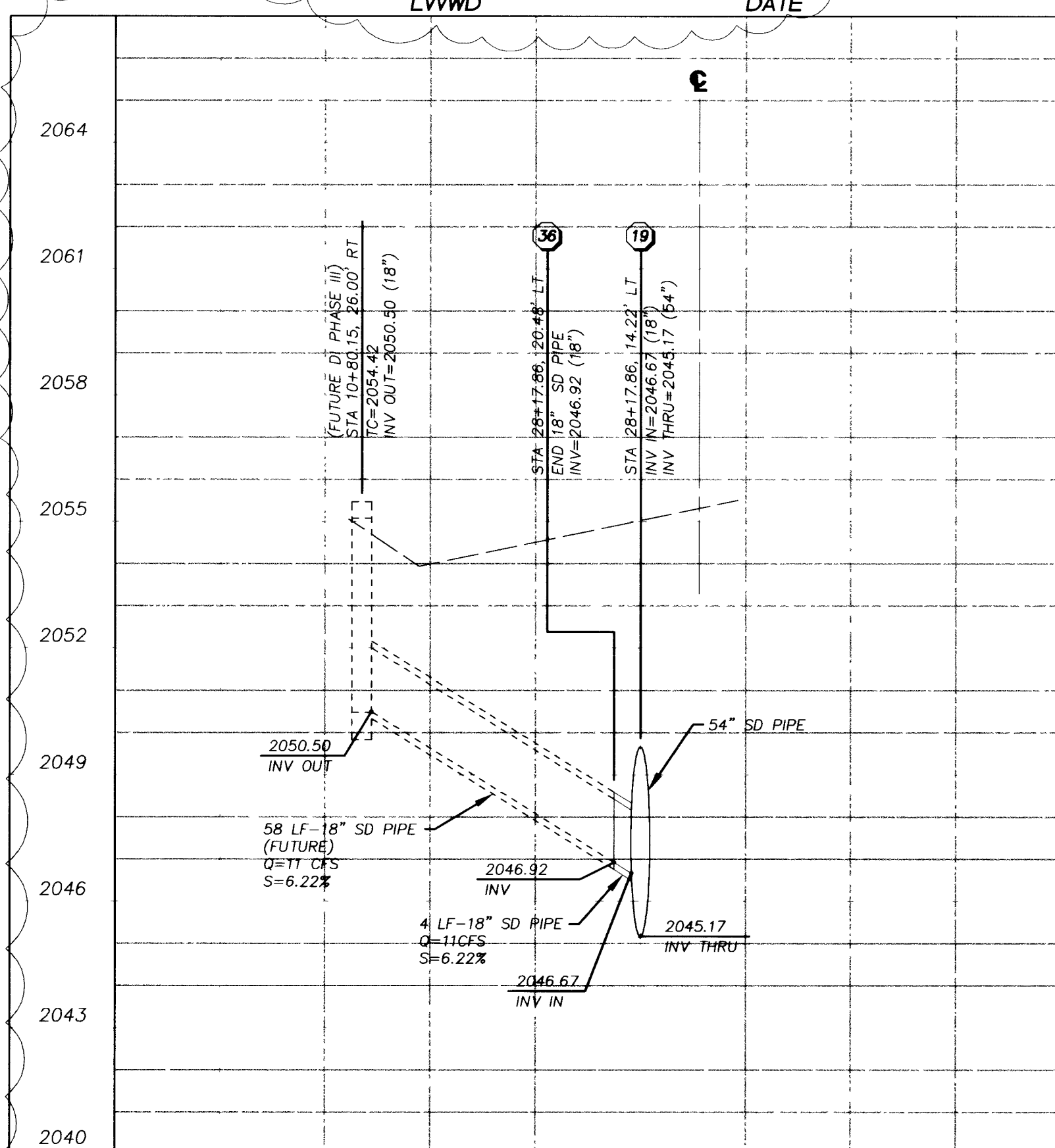
DI - 26 (B) STA. 10+82.31



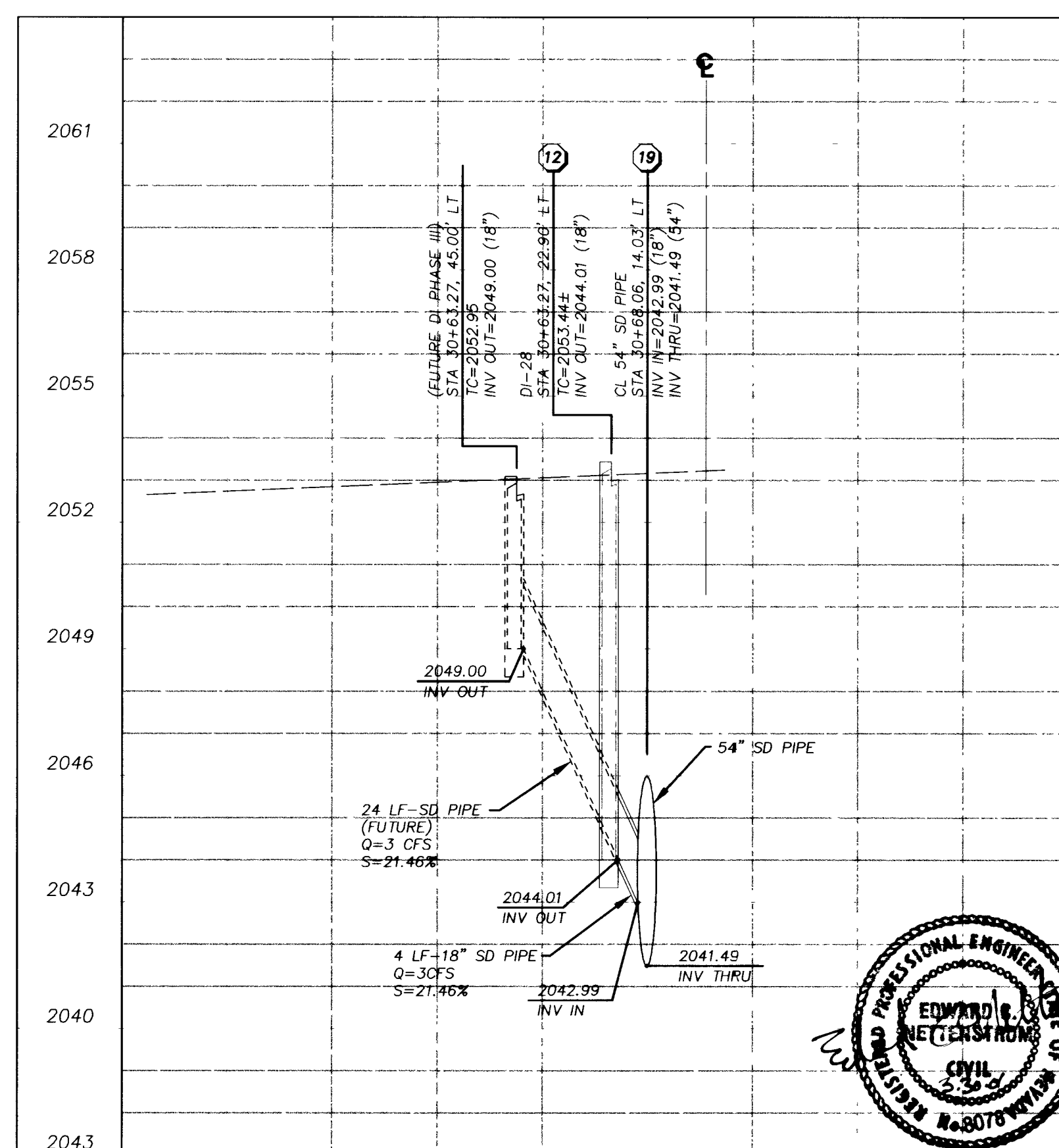
DI - 27 (A) STA. 27+40.71



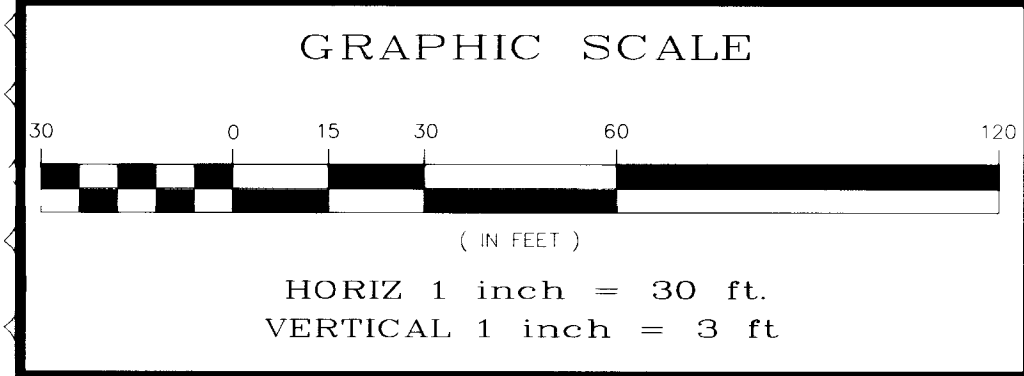
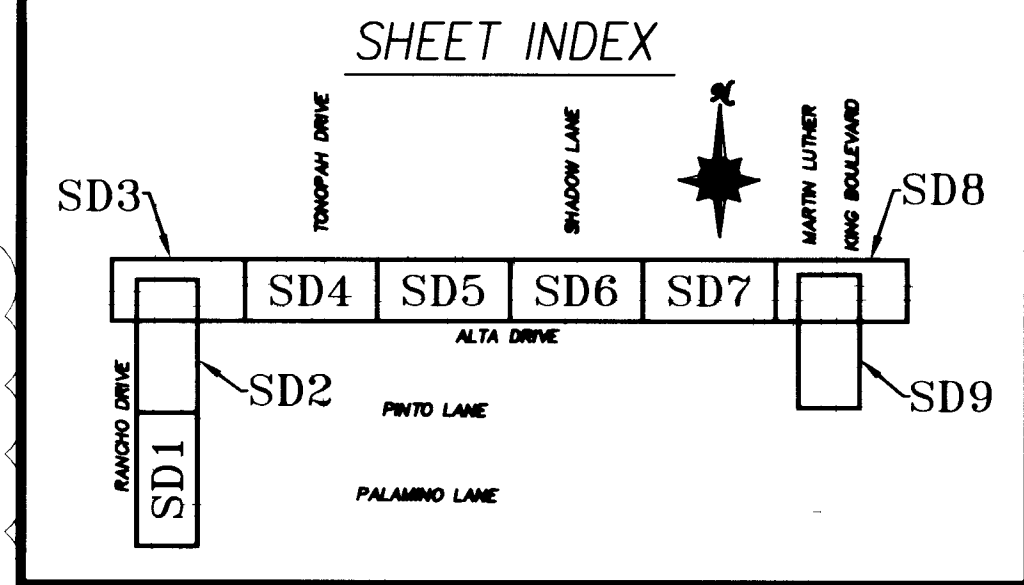
DI - 27 (B) STA. 10+79.88



END 18\"/>



DI - 28 STA. 30+63.27



**BASIS OF BEARING**  
 N89°28'51\"/>

**BENCHMARK**  
 CLV BENCHMARK BM 1LV0132SE6, CLV DATUM (2071.68') BRASS DISK AT THE NORTHWEST CORNER OF RANCHO DRIVE AND PALOMINO DRIVE.

**CAUTION**  
 EXISTING UTILITIES ARE LOCATED ON THE PLANS FROM A SEARCH OF AVAILABLE RECORDS. CONTRACTOR TO VERIFY LOCATIONS AND DEPTHS PRIOR TO CONSTRUCTION.

- KEY NOTES**
- REMOVAL ITEMS:**
- (A) REMOVE EXISTING DROP INLET.
  - (B) REMOVE BLOCK AND MORTAR PLUG FROM 66\"/>
  - (C) REMOVE EXISTING CURB, GUTTER AND SIDEWALK AS NEEDED TO INSTALL STORM DRAIN, OR DROP INLET.
  - (D) NOT USED.
  - (E) REMOVE, REPAIR, AND REPLACE MEDIAN AS NEEDED TO CONSTRUCT STORM DRAIN.
  - (F) REMOVE EXISTING STORM DRAIN.
  - (G) REMOVE EXISTING MANHOLE.
  - (H) REMOVE EXISTING SANITARY SEWER.
- CONSTRUCTION ITEMS:**
- (1) INSTALL 18\"/>
  - (2) INSTALL 24\"/>
  - (3) INSTALL 30\"/>
  - (4) INSTALL 36\"/>
  - (5) INSTALL 48\"/>
  - (6) INSTALL 54\"/>
  - (7) INSTALL 60\"/>
  - (8) INSTALL 66\"/>
  - (9) INSTALL 24\"/>
  - (10) INSTALL 29\"/>
  - (11) INSTALL TYPE \"A\" DROP INLET PER USD # 411.
  - (12) INSTALL TYPE CM1 DROP INLET PER DETAIL A, DWG. SD17.
  - (13) INSTALL TYPE CM2 DROP INLET PER DETAIL A, DWG. SD16.
  - (14) INSTALL 60\"/>
  - (15) INSTALL 48\"/>
  - (16) INSTALL 60\"/>
  - (17) INSTALL MANHOLE PER DETAIL B, DWG. SD18.
  - (18) INSTALL MANHOLE PER DETAIL D, DWG. SD18.
  - (19) CONNECT STORM DRAIN LATERAL PER DETAIL C, DWG. SD18.
  - (20) FUTURE 18\"/>
  - (21) FUTURE 24\"/>
  - (22) FUTURE 36\"/>
  - (23) FUTURE 60\"/>
  - (24) FUTURE 29\"/>
  - (25) FUTURE TYPE \"A\" DROP INLET PER USD # 411.
  - (26) FUTURE TYPE CM1 DROP INLET PER DETAIL A, DWG. SD17.
  - (27) FUTURE TYPE CM2 DROP INLET PER DWG. SD18.
  - (28) FUTURE 48\"/>
  - (29) EXISTING DROP INLET TO REMAIN.
  - (30) 66\"/>
  - (31) ABANDON EXISTING STORM DRAIN OR DROP INLET AND FILL WITH CONCRETE SLURRY.
  - (32) EXISTING 48\"/>
  - (33) EXTEND PIPE 8' PAST MANHOLE AND PLUG WITH CEMENT MORTAR.
  - (34) EXISTING GAS LINE TO BE RELOCATED BY OTHERS.
  - (35) RELOCATE EXISTING WATER PER DETAIL \"A\" DWG. D2.
  - (36) CAP RCP LATERAL WITH 12\"/>
  - (37) ABANDON EXISTING 45\"/>
  - (38) EXISTING DROP INLET CONSTRUCTED IN PHASE I.
  - (39) REMOVE PLUG AND CONNECT TO EXISTING RCP STORM DRAIN.
  - (40) 60\"/>

**REVISIONS**

NO	DATE	DESCRIPTION
1	3/1/01	REVISIONS BY CLV

**ENGINEERING DESIGN SECTION**

DESIGNED BY: CCV  
 CHECKED BY: CCV  
 DATE: DECEMBER 06, 2000

APPROVED BY: [Signature]  
 DATE: 12/06/00  
 51736

**PBS**

**Professional Engineer Seal:** WAYNE HORLACHER, CIVIL ENGINEER, No. 10739, State of Nevada.

**Department of Public Works**  
**ALTA/RANCHO IMPROVEMENTS PHASE II**  
**LATERAL PROFILES**

DRAWING No. SD13  
 PLAN# 107-V3126

31664