

BASIS OF BEARING

NORTH 89° 54' 38" EAST BEING THE SOUTH LINE OF THE SOUTHEAST QUARTER OF SECTION 35, T 20 S, R 59 E, M.D.M. AS SHOWN BY MAP ON FILE IN FILE 87, PAGE 73 PF SURVEYS, IN THE CLARK COUNTY RECORDER OFFICE.

BENCHMARK

RIVET & PLATE IN TOP OF CURB, NE RETURN OF CHARLES BLVD. AND HUAPAI WAY (NO. 01V09-36SES)

*2912.23 NAVD 1988 DATUM
2910.05 SUMMERLIN DATUM

* THIS PROJECT BASED ON 1988 DATUM

LEGAL DESCRIPTION

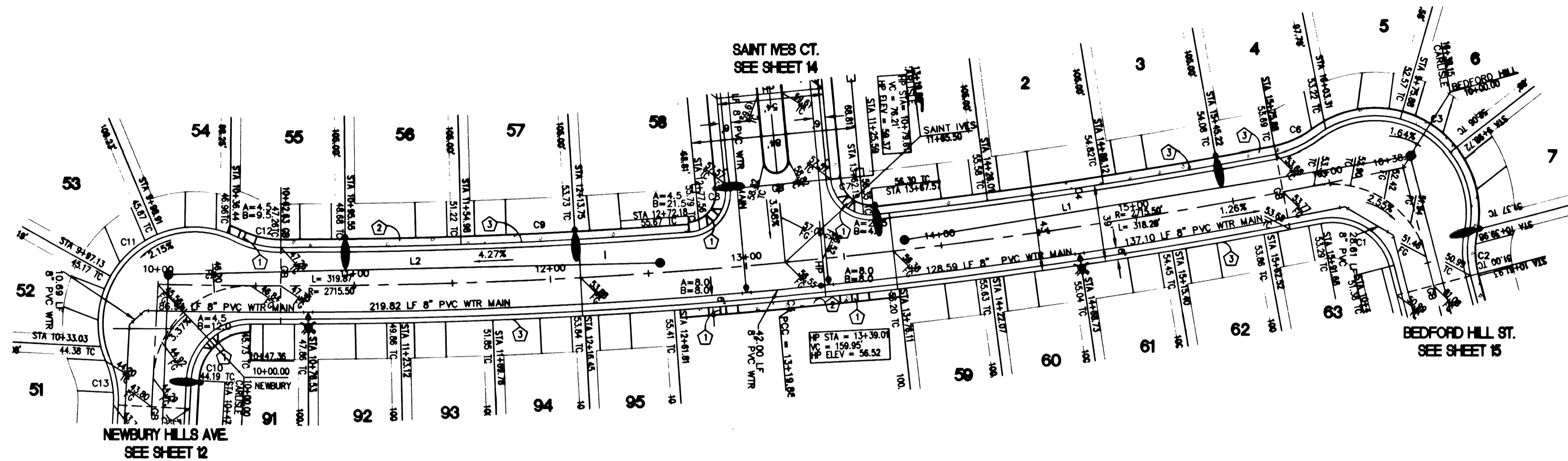
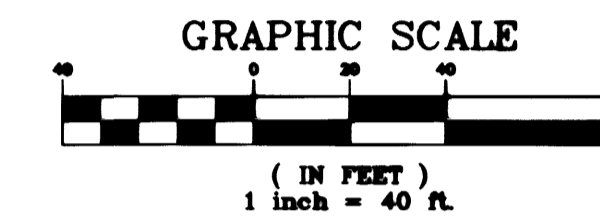
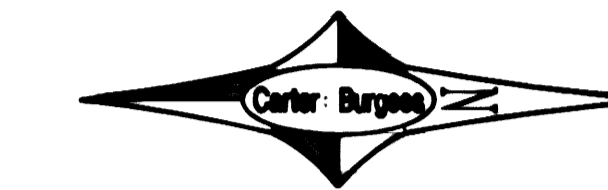
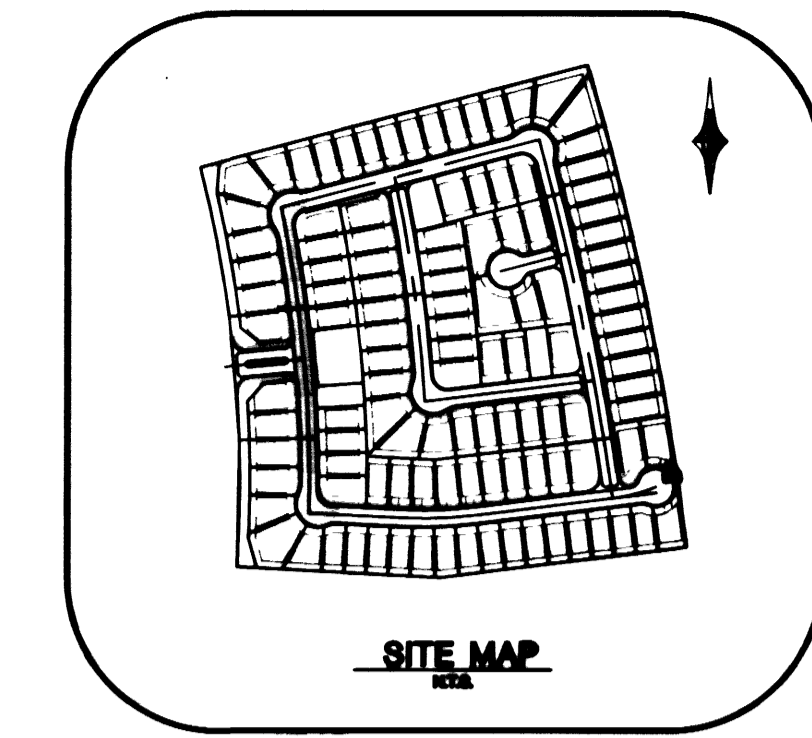
ALL OF PARCEL "P" OF SUMMERLIN VILLAGE 20 UNIT 2

CONSTRUCTION NOTES

1. CONSTRUCT SIDEWALK RAMP PER USD STD. DWG. #235 CASE III
2. CONSTRUCT 4" SIDEWALK PER SIS STD DWG S-72
3. CONSTRUCT 30" "ROLL" TYPE CURB PER SIS STD. DWG. S-48
4. CONSTRUCT 8" VALLEY GUTTER PER SIS STD. DWG. S-84
5. CONSTRUCT "A" TYPE CURB PER SIS STD. DWG. S-50
6. CONSTRUCT 24" "L" TYPE CURB PER SIS STD. DWG S-47
7. TRANSITION FROM ROLL TO L CURB SEE DETAIL 1/20 ON SHT 20.
8. CONSTRUCT ENCASEMENT PER DETAIL ON SHT 20. UDMCS SECTION 2.19.02

BACK OF CURB CURVE TABLE			
CURVE	RADIUS	LENGTH	TANGENT DELTA
C1	30.00	45.25	28.18 86°24'58"
C2	50.00	22.67	11.53 25°58'28"
C3	49.00	118.44	129.32 138°29'46"
C4	2696.00	206.81	103.46 04°23'42"
C5	2733.43	548.23	275.04 11°28'28"
C6	50.00	23.08	11.75 26°26'37"
C7	20.00	31.77	20.35 91°00'23"
C8	20.00	31.77	20.35 91°00'23"
C9	2696.00	208.05	104.07 04°25'17"
C10	30.00	45.81	28.71 87°29'00"
C11	49.00	119.37	133.09 139°54'32"
C12	50.00	23.07	11.75 26°26'24"
C13	50.00	22.67	11.53 25°58'28"

SEWER LINE TABLE		
LINE	LENGTH	BEARING
L1	260.71	N09°26'01"W
L2	250.59	S01°22'57"E



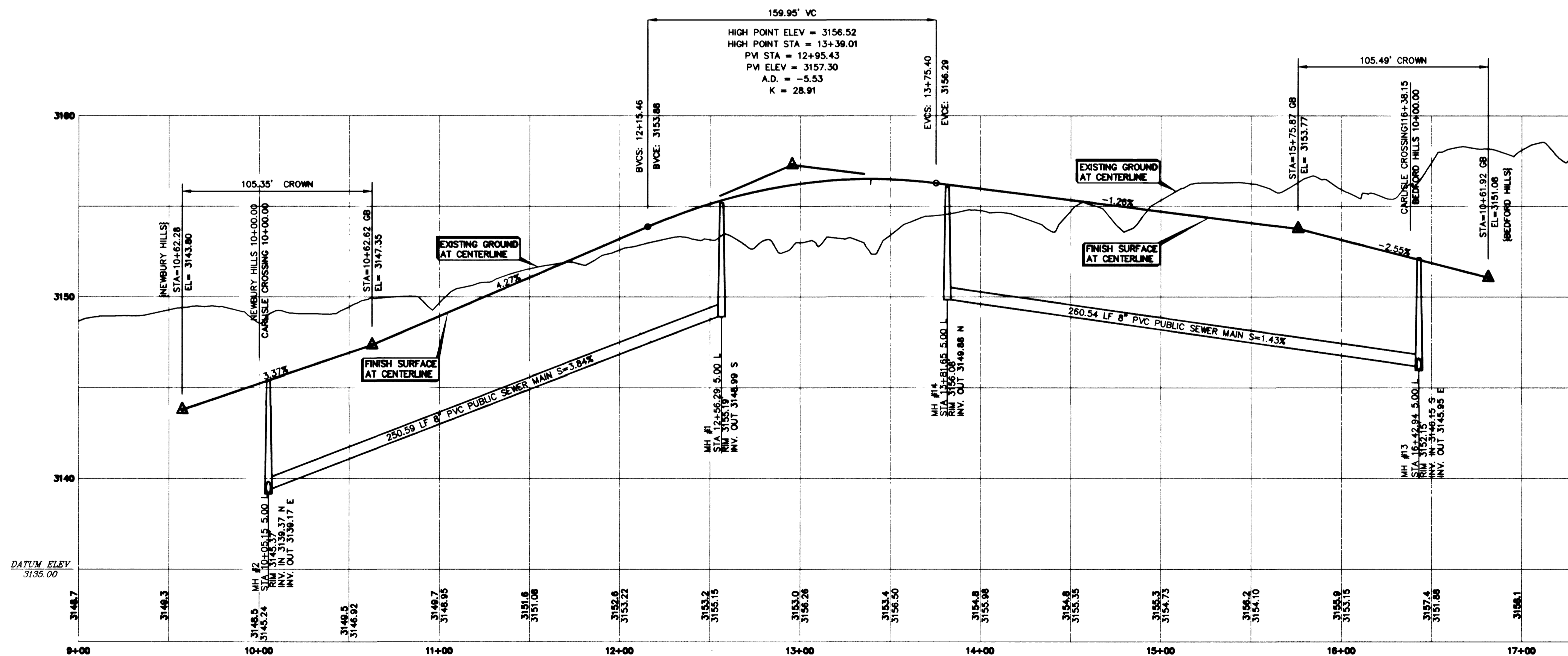
CARLISLE CROSSING ST. (PUBLIC)

APPROVAL

[Signature] 4/09/01
LAS VEGAS VALLEY WATER DISTRICT DATE

Avoid cutting underground utility lines. It's costly.
Call before you Dig
1-800-227-2600

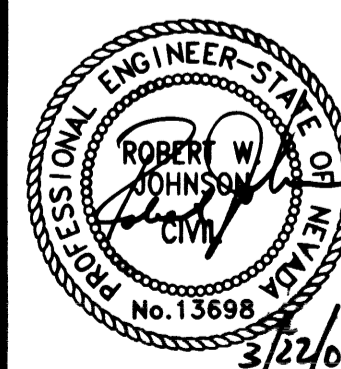
Avoid overhead power line contact. It's costly.
Call before you Overhead
1-702-593-6111
NEVADA POWER ENVIRONMENT AND SAFETY SERVICES DEPARTMENT



GREYSTONE HOMES

PLAN AND PROFILE
CARLISLE CROSSING ST.

DRAWN BY: PEC
DESIGNED BY: PEC
CHECKED BY: _____



SHEET 13 OF 20 SHEETS
DRAWING NO. 3074-4665

Carter-Burgess
6655 Bermuda road
Las Vegas, NV 89119
(702) 888-5000 Fax (702) 888-5454
Consultants in Planning, Engineering, Construction Management, and Field Services

ASHTON PARK
THE VISTAS - PARCEL P

PROJECT NO.: 240191
SCALE: 1" = 40' HORIZ.
1" = 4' VERT.