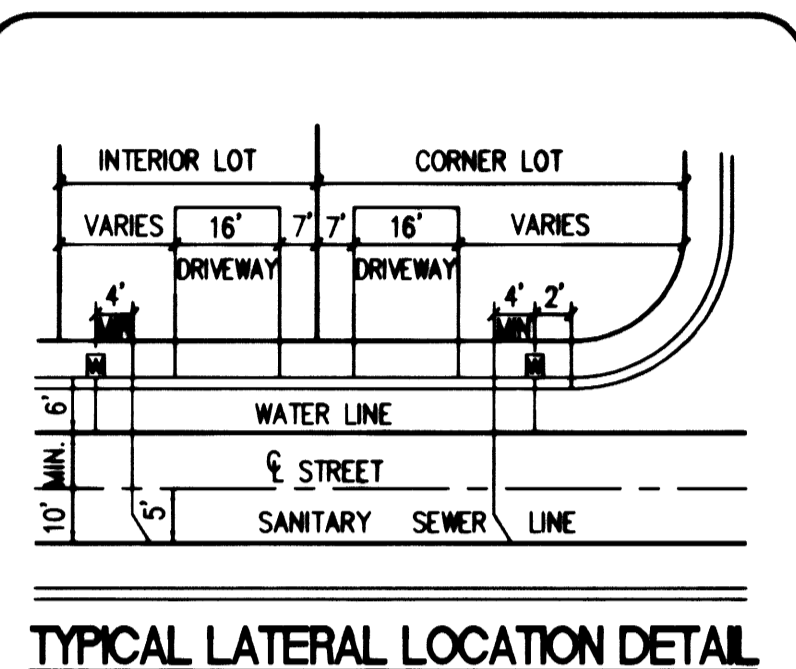
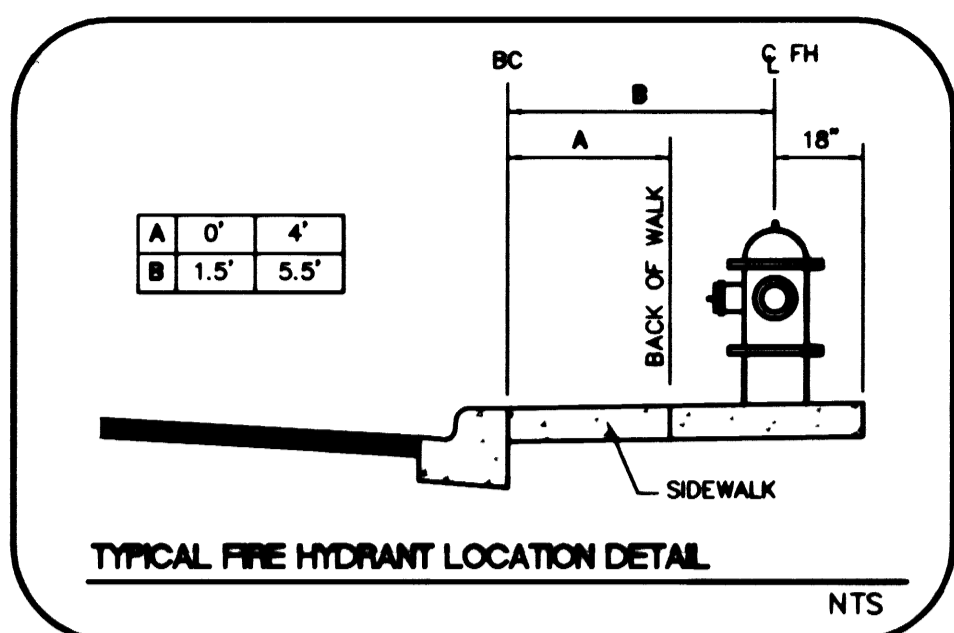


CONSTRUCTION NOTES

- ① WATER POINT OF CONNECTION: REMOVE BLOW-OFF ASSEMBLY & CONNECT TO EXISTING 8" WATER MAIN.
- ② INSTALL 8" x 8" TEE PER UDACS PLATE #5.
- ③ INSTALL 8" 90° BEND PER UDACS PLATE #5.
- ④ INSTALL 8" 45° BEND PER UDACS PLATE #5.
- ⑤ INSTALL 8" GATE VALVE PER UDACS PLATE #3.
- ⑥ INSTALL FIRE HYDRANT PER UDACS PLATE #7.
- ⑦ INSTALL 6" CAP AND BLOW-OFF ASSEMBLY PER UDACS PLATE #4 (TYP).
- ⑧ INSTALL 3/4" WATER METER PER UDACS PLATE #1B.
- ⑨ INSTALL 8" x 6" REDUCER PER UDACS PLATE #3.
- ⑩ INSTALL 8" x 8" x 6" TEE PER UDACS PLATE #5.
- ⑪ SEWER POINT OF CONNECTION: INSTALL 48" MANHOLE PER D.C.S.W.C.S. DETAIL SD-1.
- ⑫ INSTALL 48" MANHOLE PER D.C.S.W.C.S. DETAIL SD-1.
- ⑬ INSTALL 4" PVC SEWER LATERAL.
- ⑭ INSTALL BACK WATER VALVE ON LOT WHERE INDICATED ON PLANS.
- ⑮ INSTALL T-LOCK MAN HOLE.
- ⑯ INSTALL PRESSURE REDUCING VALVE ON LOT WHERE INDICATED ON PLANS.
- ⑰ DIP WATER LINE PER UDACS SECTION 2.19.02 #3 SEE DETAIL ON SHT 20.

GENERAL NOTE:

- 1. A RESIDENTIAL SEWER BACKWATER VALVE MUST BE PROVIDED FOR LOTS 4, 5, 9-11, 14-19, 22, 24-25, 29-30, 39-44, 47-49, 54-56, 72, 76-86, 88-94, 97-101, 111-113, 115.
- 2. A RESIDENTIAL PRESSURE REDUCING VALVE MUST BE PROVIDED FOR LOTS 22-33, 34-44, 79-85, 113-114. THIS PROPERTY MAY HAVE STATIC WATER PRESSURE IN EXCESS OF 80 PSI. THE UNIFORM PLUMBING CODE REQUIRES THAT INDIVIDUAL ON-SITE (PRIVATE) PRESSURE REDUCING VALVES BE INSTALLED WHENEVER THE PRESSURE EXCEEDS 80 PSI. PRVs ARE THE DEVELOPER'S RESPONSIBILITY AND WILL NOT BE INSPECTED OR INCLUDED IN THE ACCEPTANCE OF LVWD FACILITIES.
- 3. FIRE FLOW IS 1500 GPM AT 20 PSI RESIDUAL.



BASIS OF BEARING

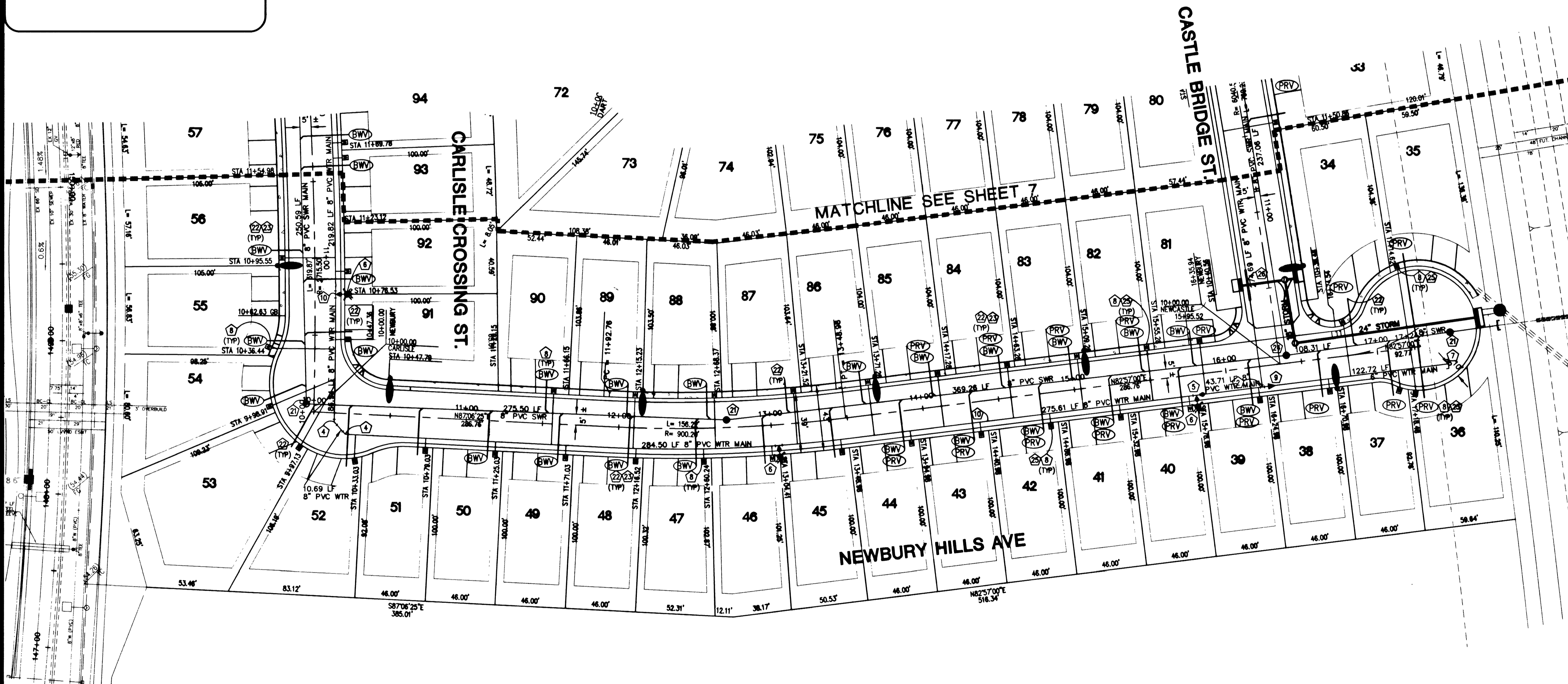
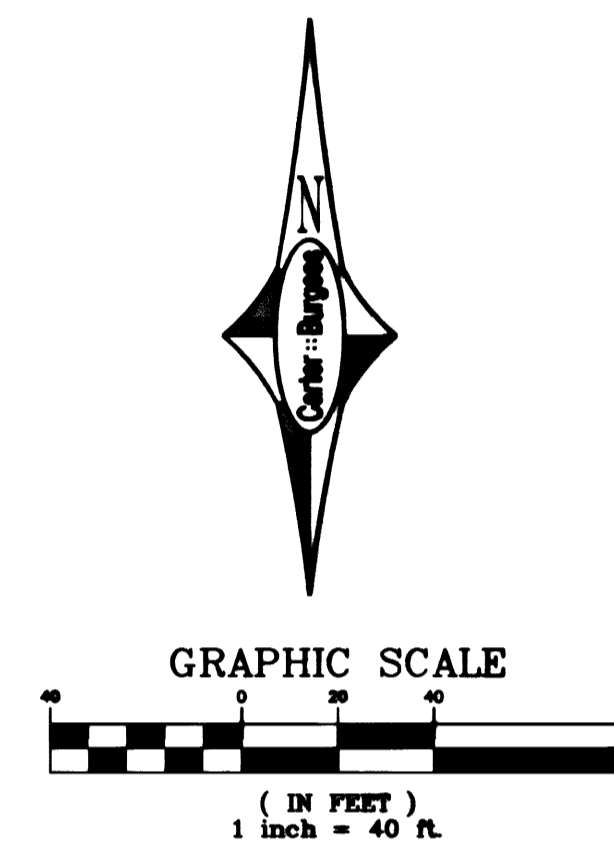
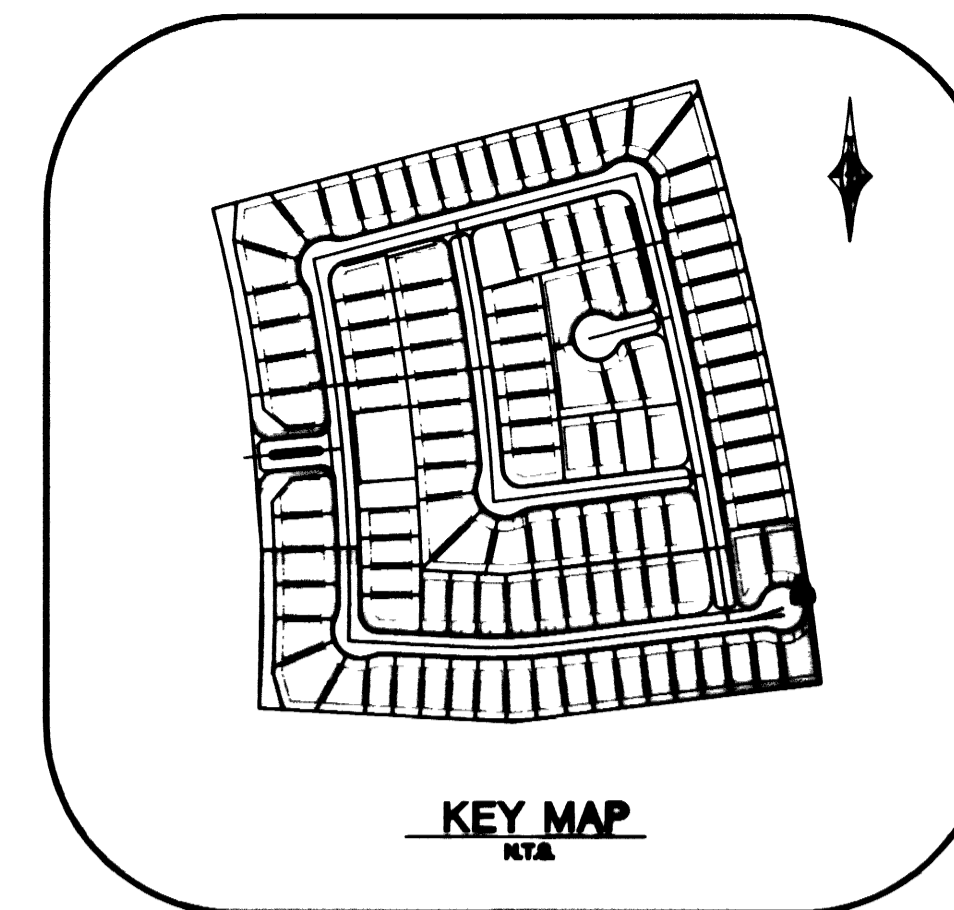
NORTH 89° 54' 38" EAST BEING THE SOUTH LINE OF THE SOUTHEAST QUARTER OF SECTION 35, T 20 S, R 59 E, M.D.M., AS SHOWN BY MAP ON FILE IN FILE 87, PAGE 73 PF SURVEYS, IN THE CLARK COUNTY RECORDER OFFICE.

BENCHMARK

RIVET & PLATE IN TOP OF CURB, NE RETURN OF CHARLES BLVD. AND HUALAPAI WAY (NO. 0LV09-36SES)

*2912.23' NAVD 1988 DATUM
2910.05' SUMMERLIN DATUM

* THIS PROJECT BASED ON 1988 DATUM



LEGEND	
EXISTING	PROPOSED
RIGHT OF WAY	R/W
CENTERLINE	CL
SIDEWALK, CURB & GUTTER	
HANDICAP RAMP	
INDEX CONTOUR	2100
INTERMEDIATE CONTOUR	2100
SEWER MAIN	EX 8" SEWER
SEWER MANHOLE	8" SEWER
SEWER LATERAL	8" SEWER
WATER MAIN	EX 8" WATER
WATER LATERAL	8" WATER
WATER METER	
REDUCED PRESSURE PRINCIPLE ASSEMBLY	
WATER VALVE	
WATER TEE OR BEND	
WATER REDUCER	
FIRE HYDRANT	
STORM DRAIN	EX 24" SD
STORM DRAIN MANHOLE	24" SD
STORM DRAIN INLET	
STREETLIGHT - 100 WATT	
STREETLIGHT - 250 WATT	
STREET NAME SIGN	
STOP SIGN	
WALL PILASTER	
LOT NUMBER	42
FINISH FLOOR ELEVATION	05.8
PAD ELEVATION	05.8
RATE OF GRADE	(0.50%)
	(31.33)
	EX TO
BLOCK WALL	
RETAINING WALL	

APPROVAL

[Signature] 4/09/01
LAS VEGAS VALLEY WATER DISTRICT DATE

[Signature] 3/22/01
FIRE MARSHAL DATE

Call before you Overhead
1-702-593-6111
NEVADA POWER ENVIRONMENT AND SAFETY SERVICES DEPARTMENT

Call before you Dig
1-800-227-2600

GREYSTONE HOMES

UTILITY PAN 3 OF 3

ASHTON PARK THE VISTAS - PARCEL P

PROFESSIONAL ENGINEER - STATE OF NEVADA
ROBERT W. JOHNSON
CIVIL
No. 13698

SHEET 8 OF 20 SHEETS
DRAWING NO. 3074-4665

Carter Burgess
Consultants in Planning, Engineering, Construction Management, and Related Services
6655 Bermuda Road
Las Vegas, NV 89119
(702) 938-5600 Fax (702) 938-5464

REV	DATE	BY