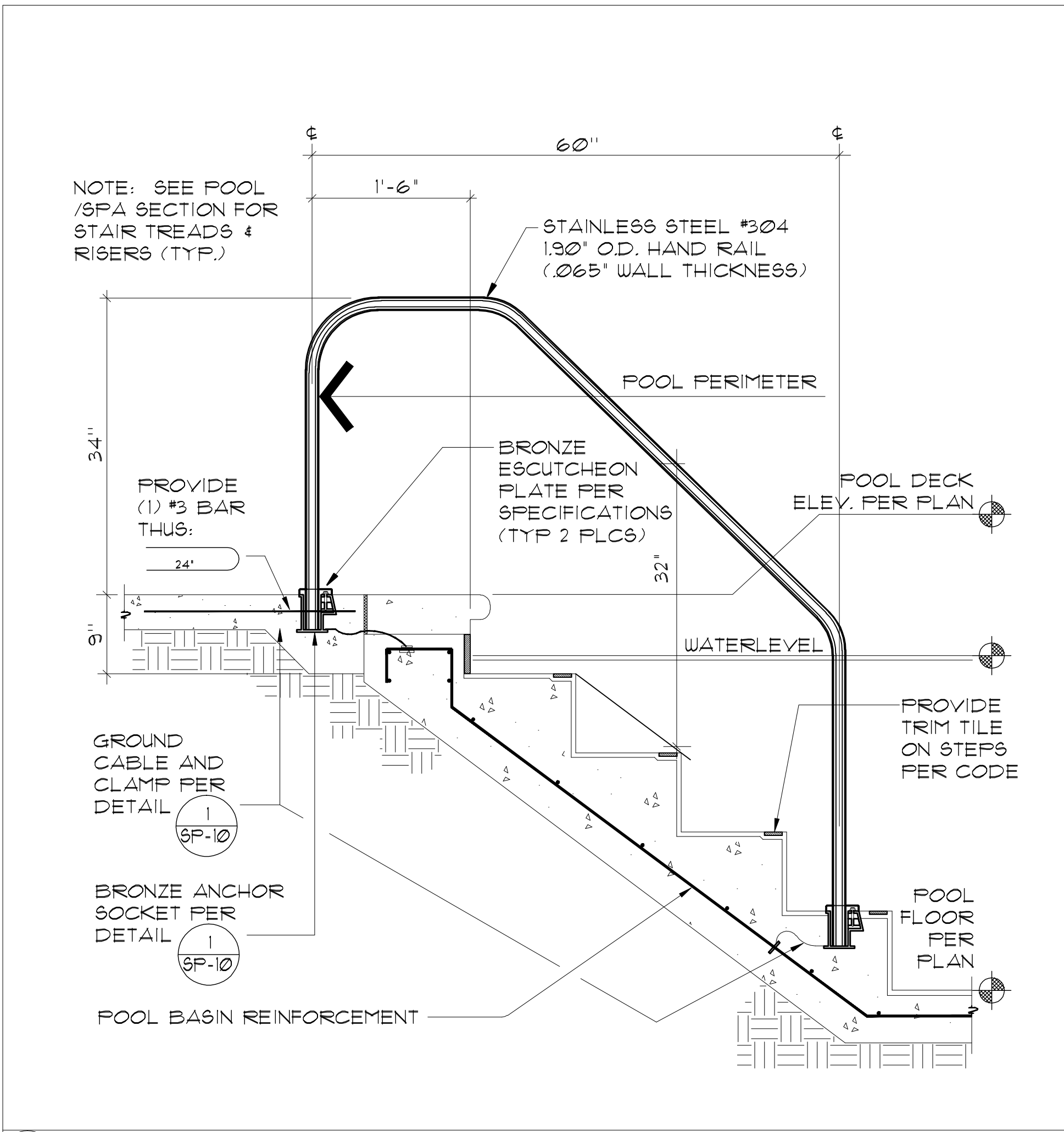
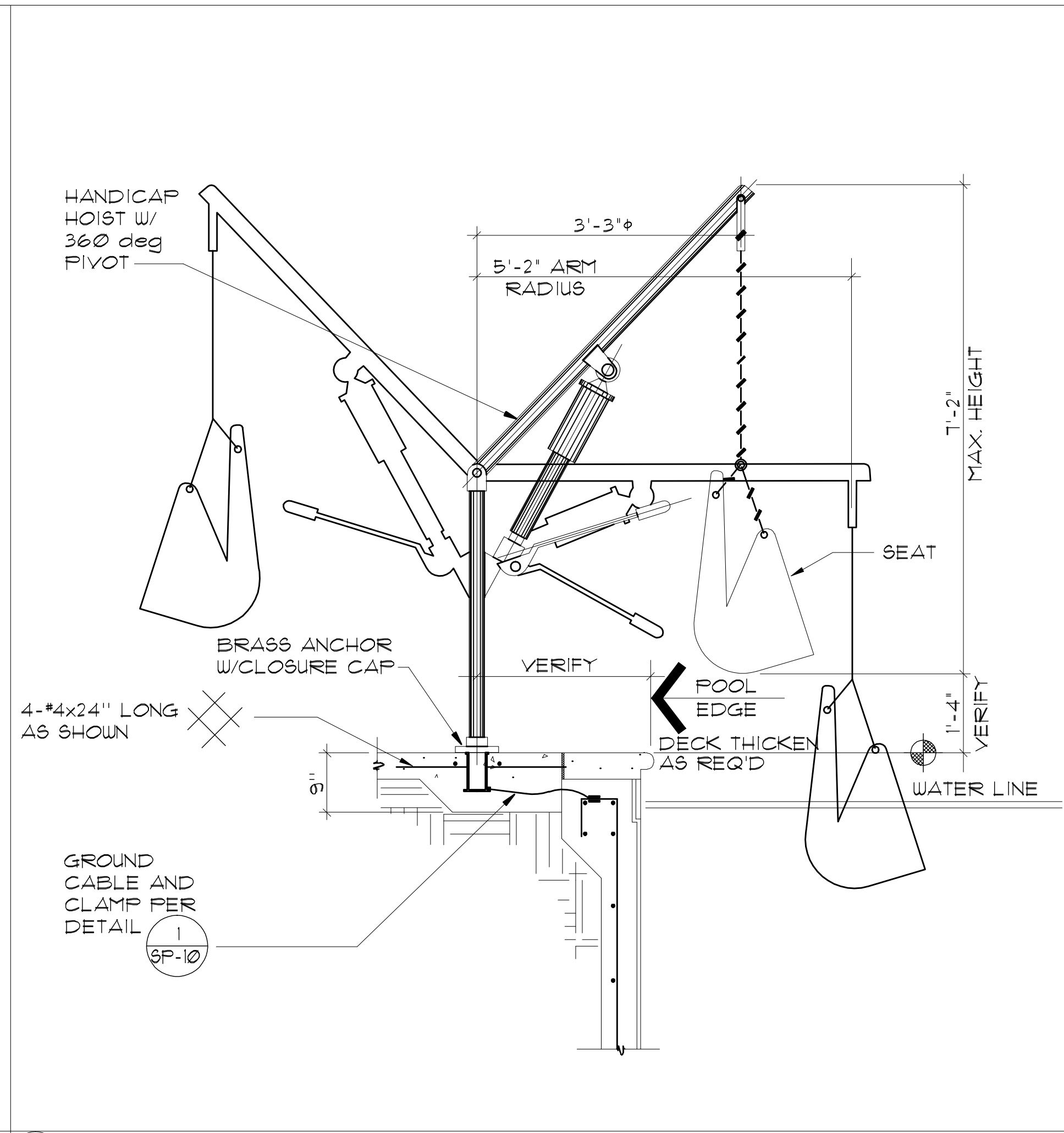


THE REPRODUCTION, COPY, OR USE OF THIS DRAWING WITHOUT THEIR PRIOR WRITTEN CONSENT IS PROHIBITED, AND ANY INFRINGEMENT WILL BE SUBJECT TO LEGAL ACTION.

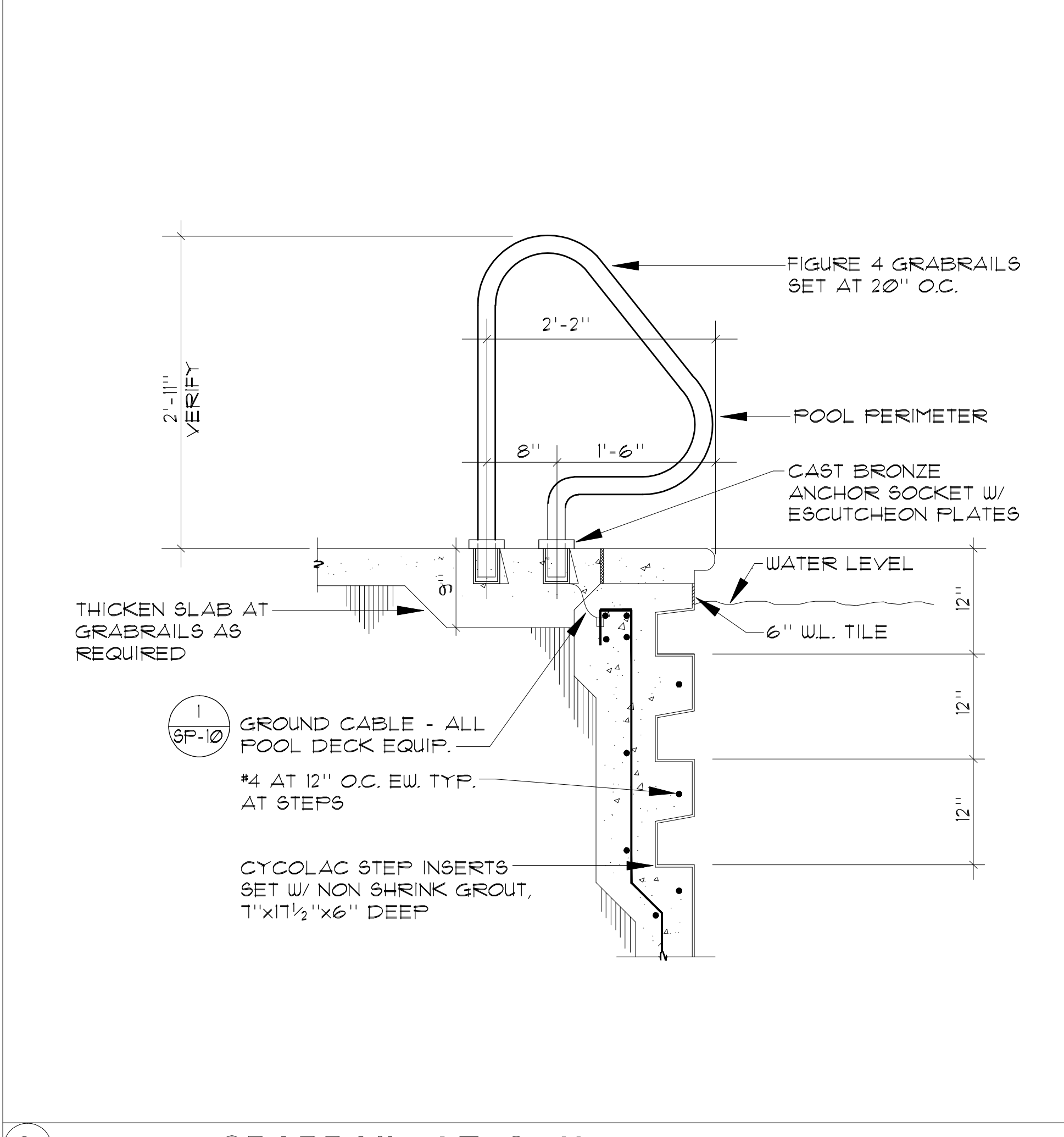
NOTE: DO NOT SCALE DRAWING. FOLLOW DIMENSIONS. THIS DRAWING AND DESIGN CONCEPTS SHOWN THEREON ARE THE SOLE PROPERTY OF WESTAR ARCHITECTURAL GROUP / NEVADA, INCORPORATED.



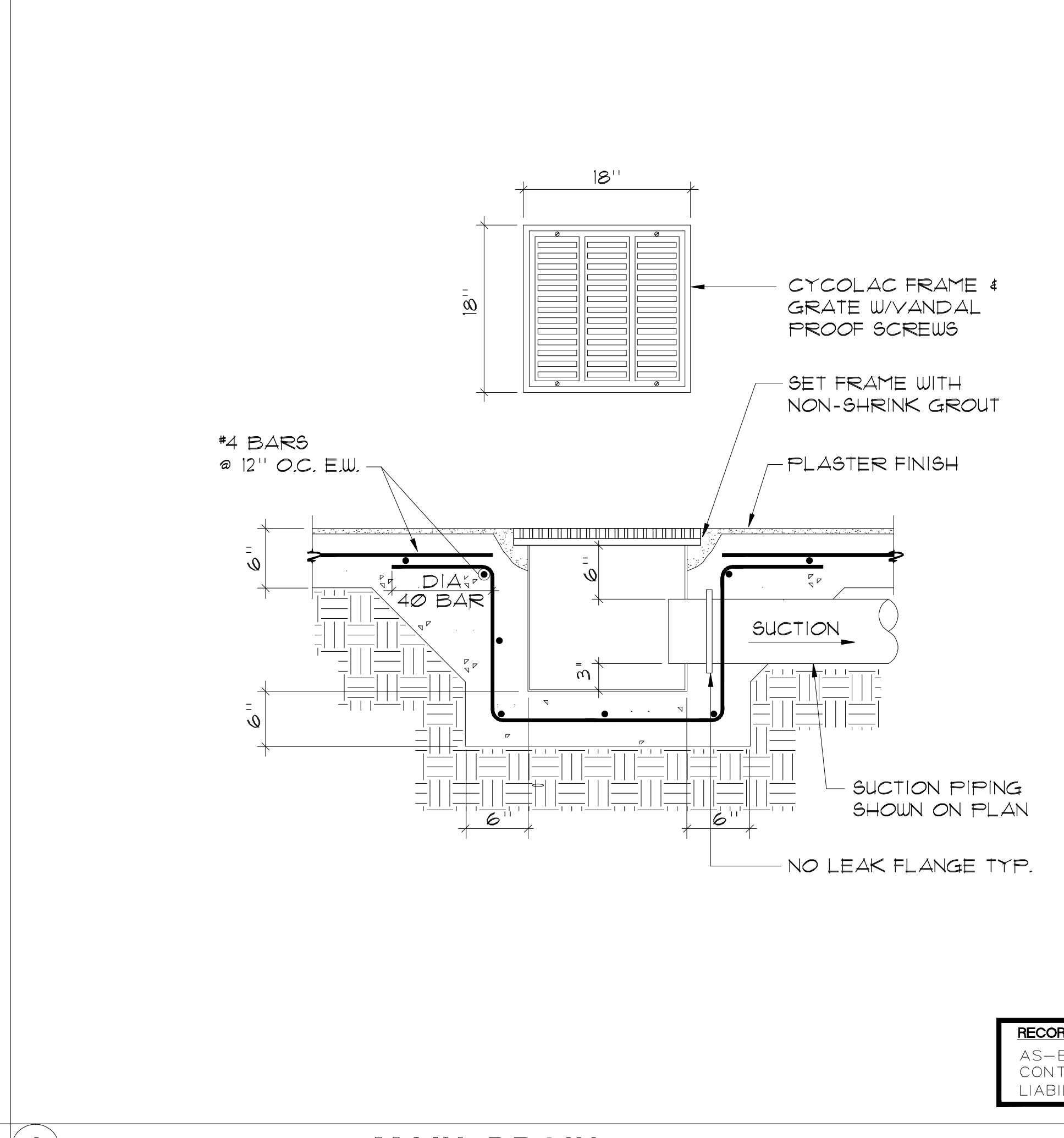
1 HANDRAIL DETAIL 1" = 1'-0"



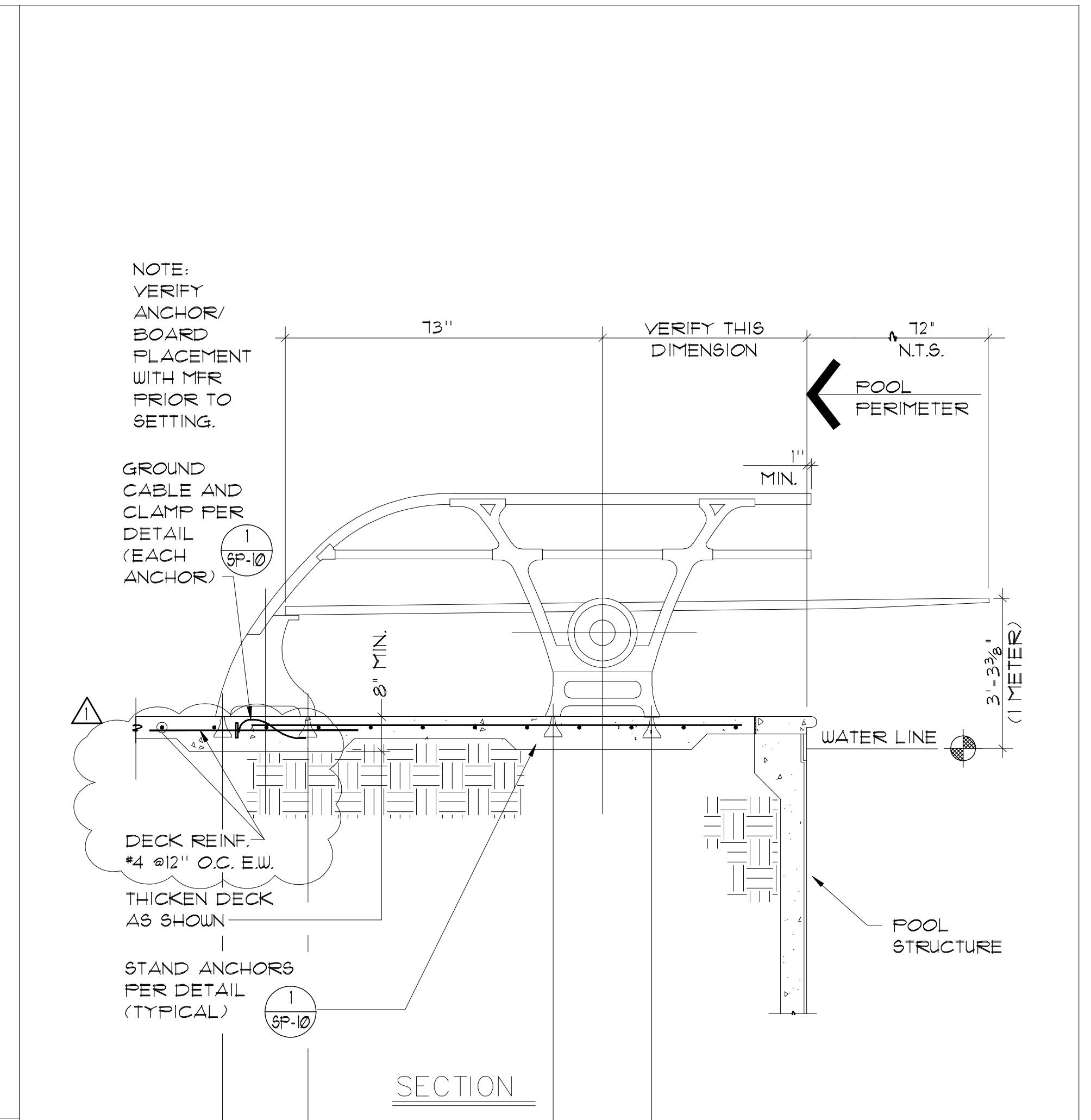
2 DISABLED LIFT 3/4" = 1'-0"



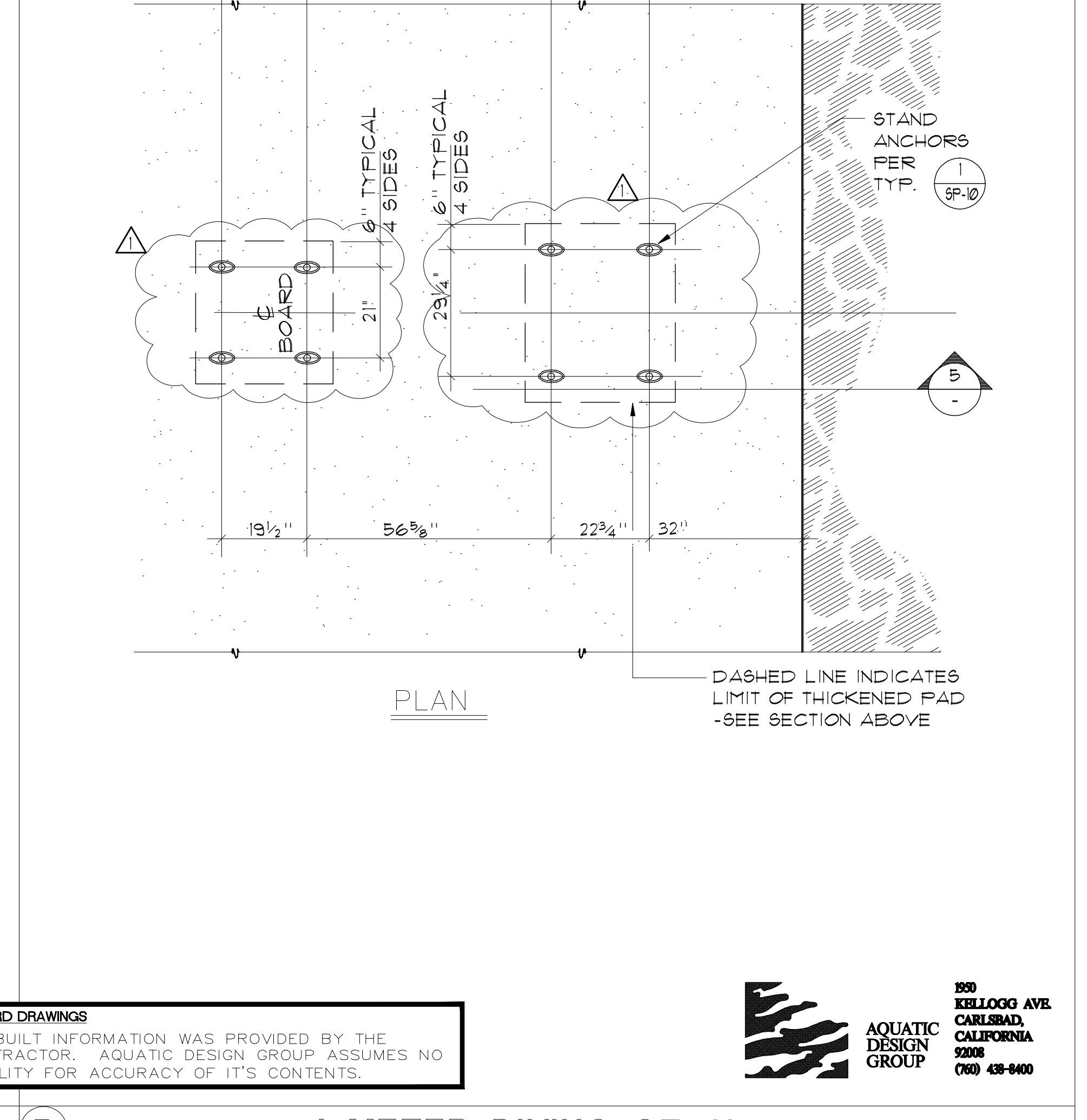
3 GRABRAIL AT CANTILEVER EDGE 1" = 1'-0"



4 MAIN DRAIN NO SCALE



5 1 METER DIVING STAND 1/2" = 1'-0"



5 1 METER DIVING STAND 1/2" = 1'-0"

RECORD DRAWINGS
AS-BUILT INFORMATION WAS PROVIDED BY THE CONTRACTOR. AQUATIC DESIGN GROUP ASSUMES NO LIABILITY FOR ACCURACY OF ITS CONTENTS.

AQUATIC DESIGN GROUP
150 KELLOGG AVE.
CARLSBAD, CALIFORNIA 92008
(760) 438-8400

REVISIONS
CITY CORRECTION 12/1/00

WESTAR
ARCHITECTURAL GROUP / NEVADA INC.
LAS VEGAS * PHOENIX
ARCHITECTURE * PLANNING * PROJECT MANAGEMENT
3900 MEADOWS LANE SUITE 220 LAS VEGAS, NEVADA 89107
TELEPHONE: (702) 878-1000 FAX: (702) 878-8430

WESTAR

MASTERPLAN REDESIGN FOR:
CITY OF LAS VEGAS - BAKER PARK
1020 E. ST. LOUIS AVE.
LAS VEGAS, NEVADA

DRAWN BY: GMK
REVIEWED BY: S/JF
PROJECT NUMBER: 89110
ISSUE DATE: 12-1-00

SP-6
DETAILS