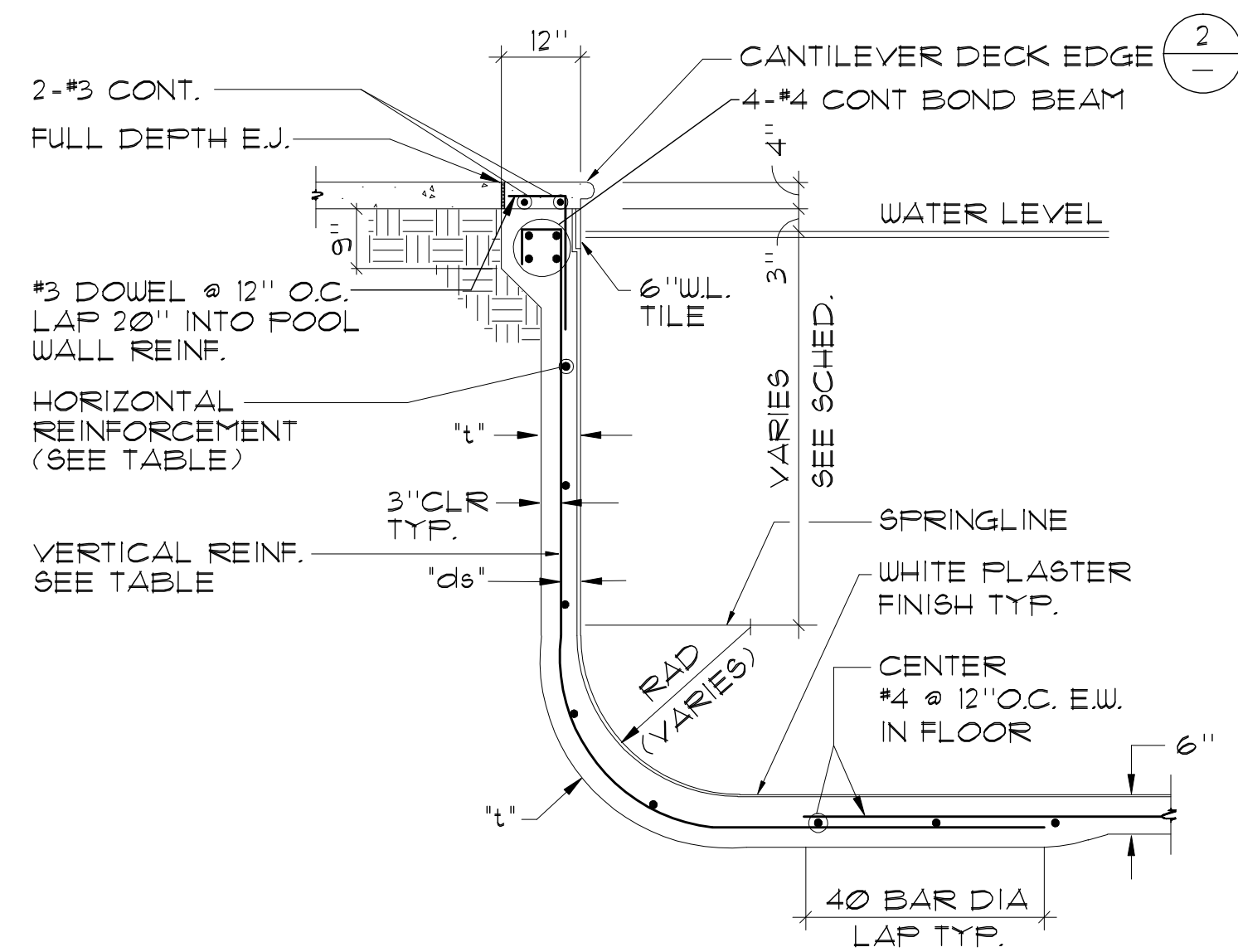


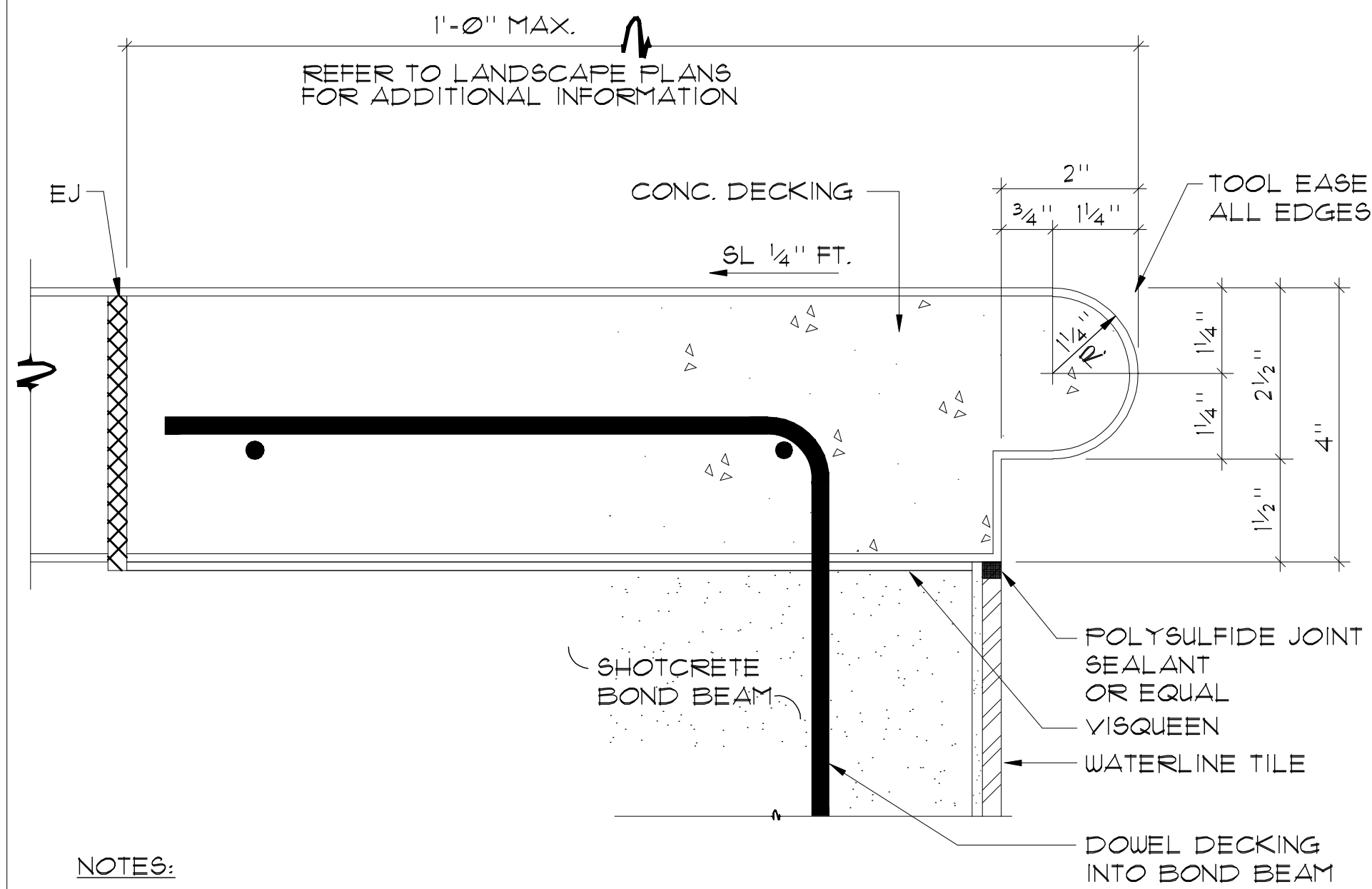
THE REPRODUCTION, COPY, OR USE OF THIS DRAWING WITHOUT THEIR PRIOR WRITTEN CONSENT IS PROHIBITED, AND ANY INFRINGEMENT WILL BE SUBJECT TO LEGAL ACTION.

NOTE: DO NOT SCALE DRAWING. FOLLOW DIMENSIONS. THIS DRAWING AND DESIGN CONCEPTS SHOWN THEREON ARE THE SOLE PROPERTY OF WESTAR ARCHITECTURAL GROUP / NEVADA, INCORPORATED.

REINFORCEMENT TABLE / GUNITE SCHEDULE				
WATER DEPTH	't'	'ds'	RADIUS	HORIZONTAL REINFORCEMENT
0' TO 3'-6"	6"	3"	0" TO 6"	#4 @ 12" O.C.
3'-6" TO 5'-0"	7"	4"	6" TO 18"	#4 @ 12" O.C.
5'-0" TO 8'-0"	7"	4"	18" TO 3'-0"	#4 @ 4" O.C.
8'-0" TO 10'-0"	9"	6"	3'-0" TO 5'-0"	#4 @ 12" O.C.
10'-0" TO 12'-0"	11"	8"	5'-0" TO 6'-0"	#4 @ 8" O.C.

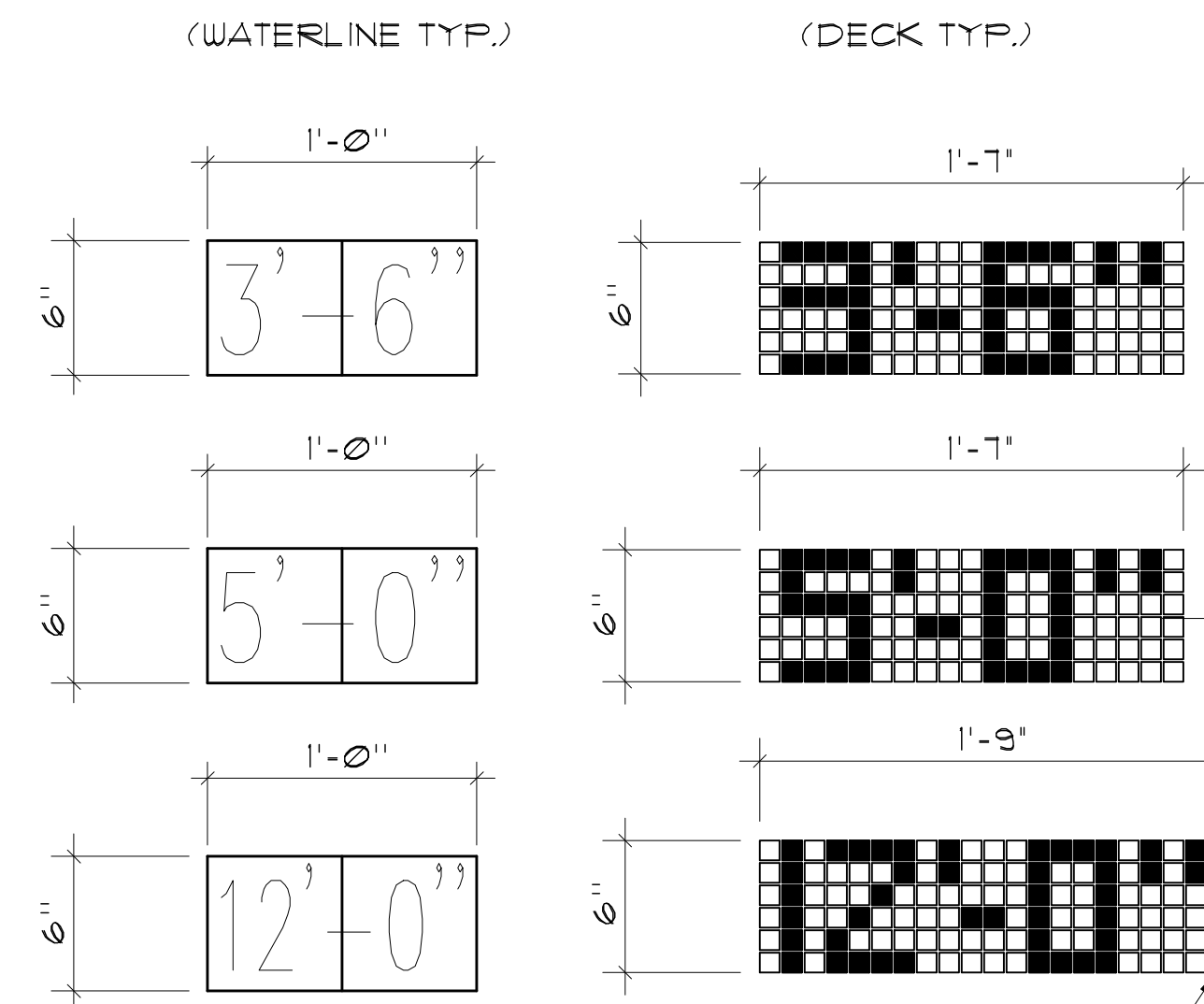


1 TYPICAL POOL WALL DETAIL 1/2" = 1'-0"



- NOTES:
1. THE CONTRACTOR SHALL EXERCISE GREAT CARE IN THE PLACEMENT AND CURING OF THE CONCRETE COPING AROUND THE PERIMETER OF THE POOLS.
  2. SCORE PATTERN SHALL MAINTAIN A 1:1 RATIO WITH COPING WIDTH.
  3. UTILIZE MEDIUM SIZE STEALTH FIBER IN CONCRETE DESIGN.
  4. UTILIZE 2500 PSI CONCRETE AT 28 DAYS FOR POOL COPING.
  5. ACID WASH POOL COPING IN LIEU OF SAND BLASTING TO ACHIEVE TEXTURE.
  6. THE TOP OF THE POOL SHOTCRETE BOND BEAM SHALL BE SMOOTH AND LEVEL.
  7. UTILIZE 20 MIL VISQUEEN BETWEEN BOND BEAM AND POOL COPING.

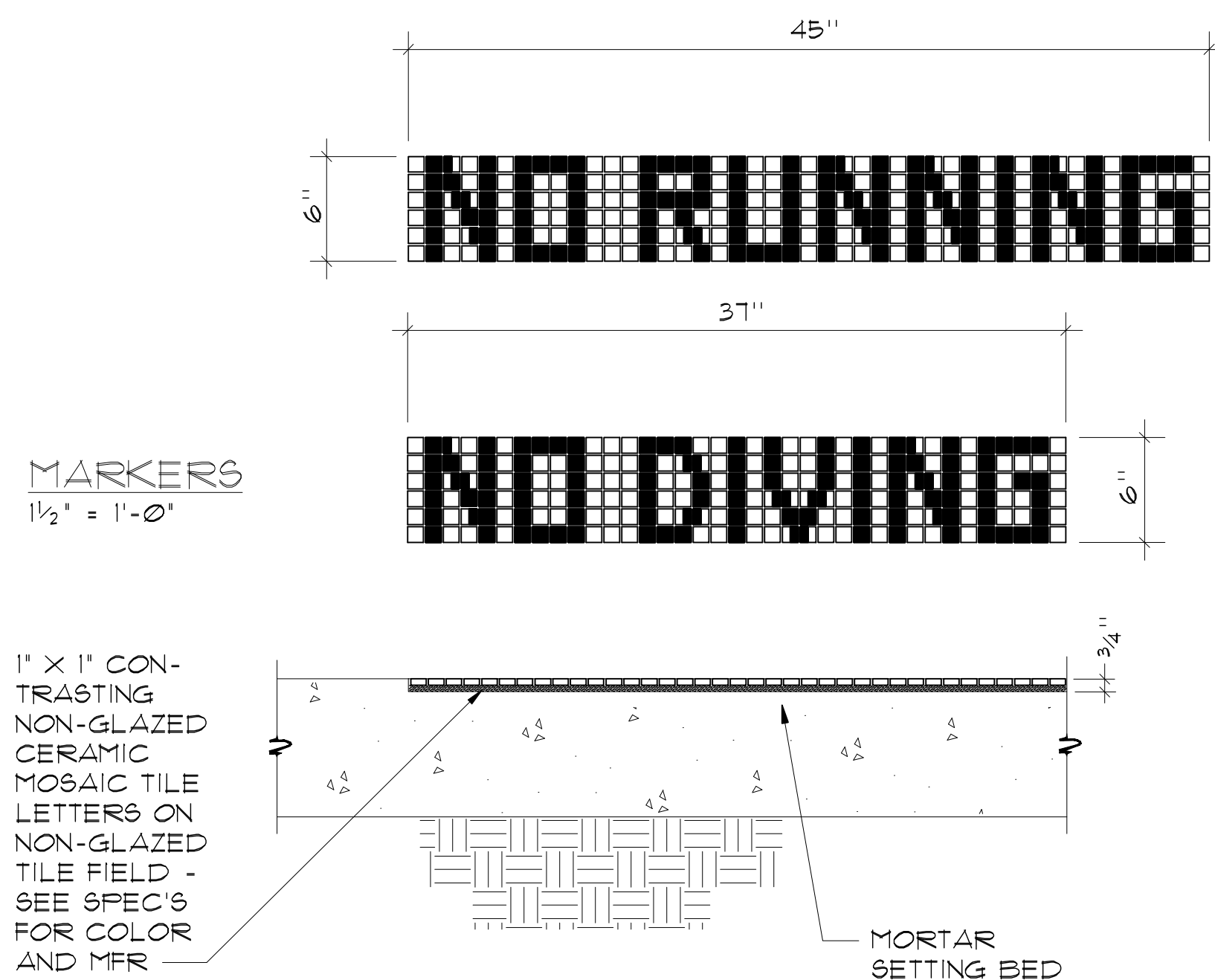
2 TYPICAL EDGE DETAIL NO SCALE



PROVIDE DEPTH MARKERS ON DECKING AND AT WATERLINE AT EACH LOCATION. 6"x6" TILES WITH CONTRASTING WHITE NUMBERS, AND 1"x1" CONTRASTING NON-GLAZED CERAMIC MOSAIC TILE NUMBERS, ON NON-GLAZED FIELD. LANDSCAPE ARCHITECT TO SELECT COLORS.

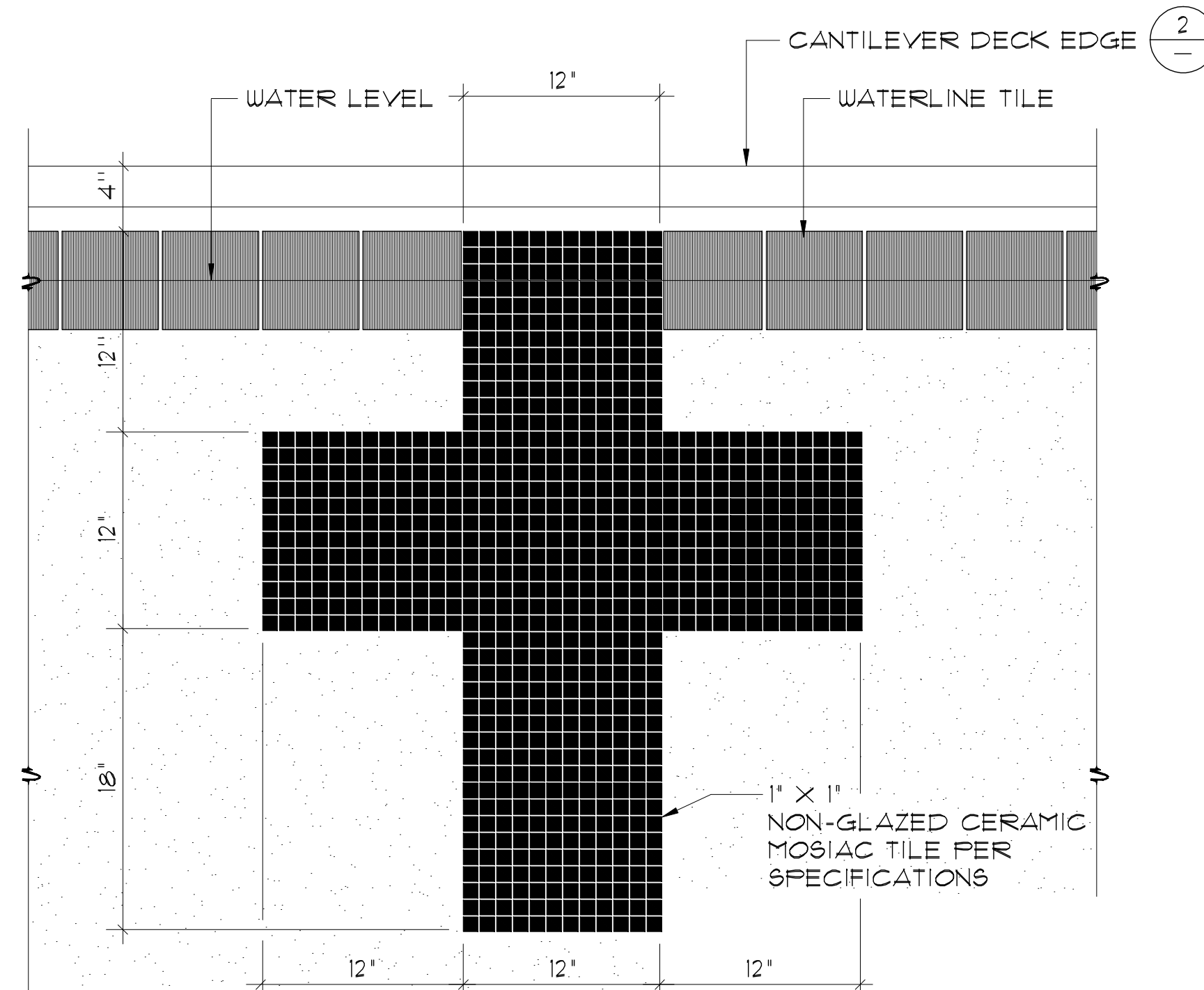
MEDIUM SANDSTONE TEXTURE

3 DEPTH MARKERS 1/2" = 1'-0"

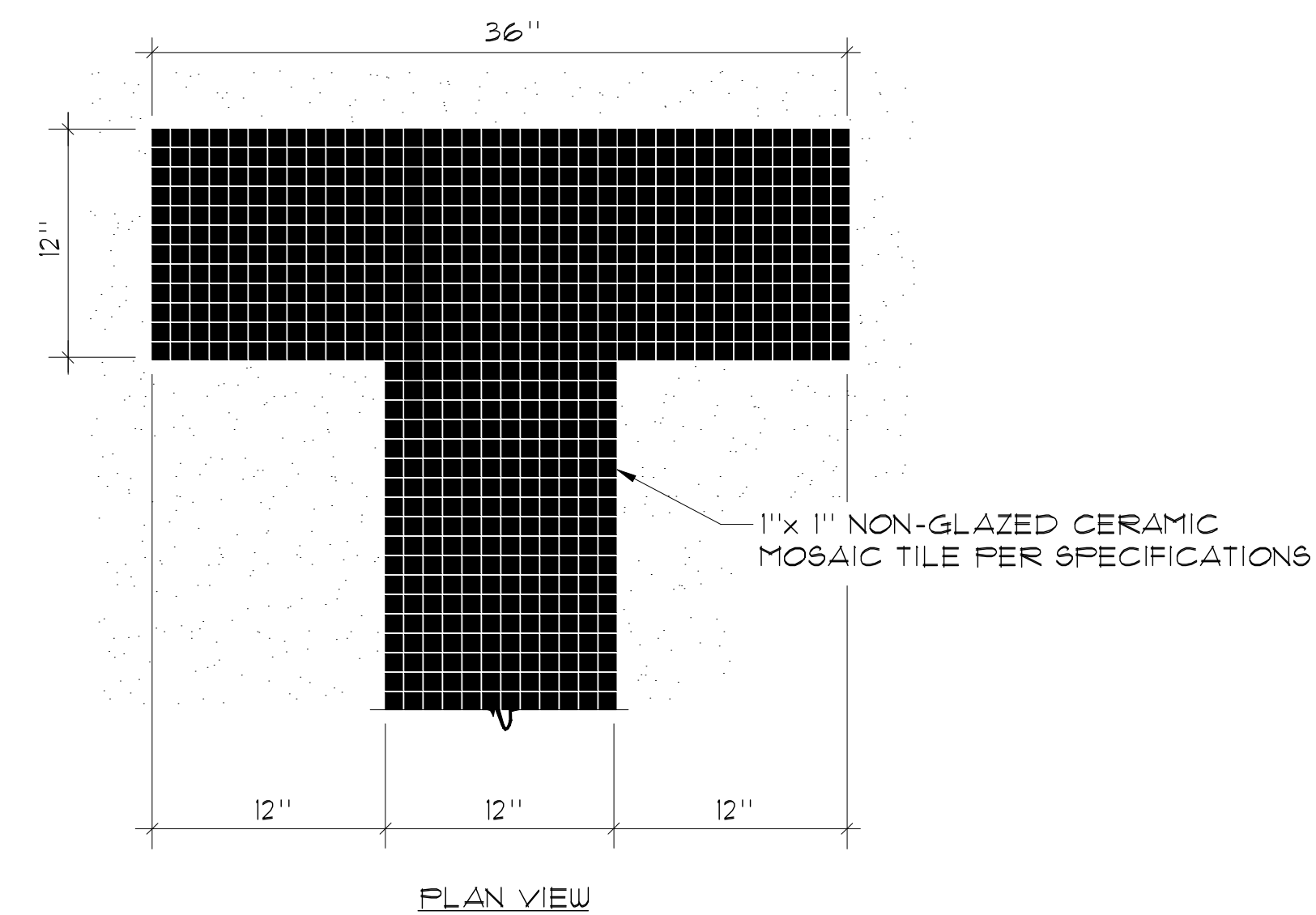


SECTION THROUGH TILE 1/2" = 1'-0"

4 CAUTION MARKERS 1/2" = 1'-0"



5 END WALL TARGETS 1/2" = 1'-0"



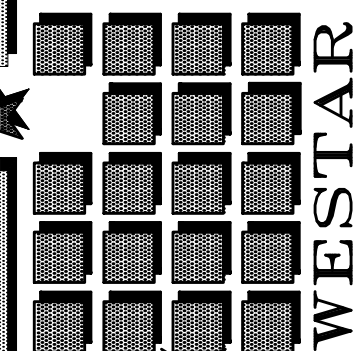
6 RACING LANE LINE 1/2" = 1'-0"

RECORD DRAWINGS  
AS-BUILT INFORMATION WAS PROVIDED BY THE CONTRACTOR. AQUATIC DESIGN GROUP ASSUMES NO LIABILITY FOR ACCURACY OF IT'S CONTENTS.

AQUATIC DESIGN GROUP  
850 KELLOGG AVE. CARLSBAD, CALIFORNIA 92008 (760) 438-8400

REVISIONS AS BUILT DIMS 06/24/03

WESTAR ARCHITECTURAL GROUP / NEVADA INC. LAS VEGAS PHOENIX ARCHITECTURE & PLANNING & PROJECT MANAGEMENT 3900 MEADOWS LANE SUITE 220 LAS VEGAS, NEVADA 89107 TELEPHONE: (702) 878-0000 FAX: (702) 878-8430



MASTERPLAN REDESIGN FOR: CITY OF LAS VEGAS - BAKER PARK 1020 E. ST. LOUIS AVE. LAS VEGAS, NEVADA

DRAWN BY: GMK  
REVIEWED BY: SJF  
PROJECT NUMBER: 99110  
ISSUE DATE: 12-1-00

021998E 98025SP11/8

SP-5

DETAILS