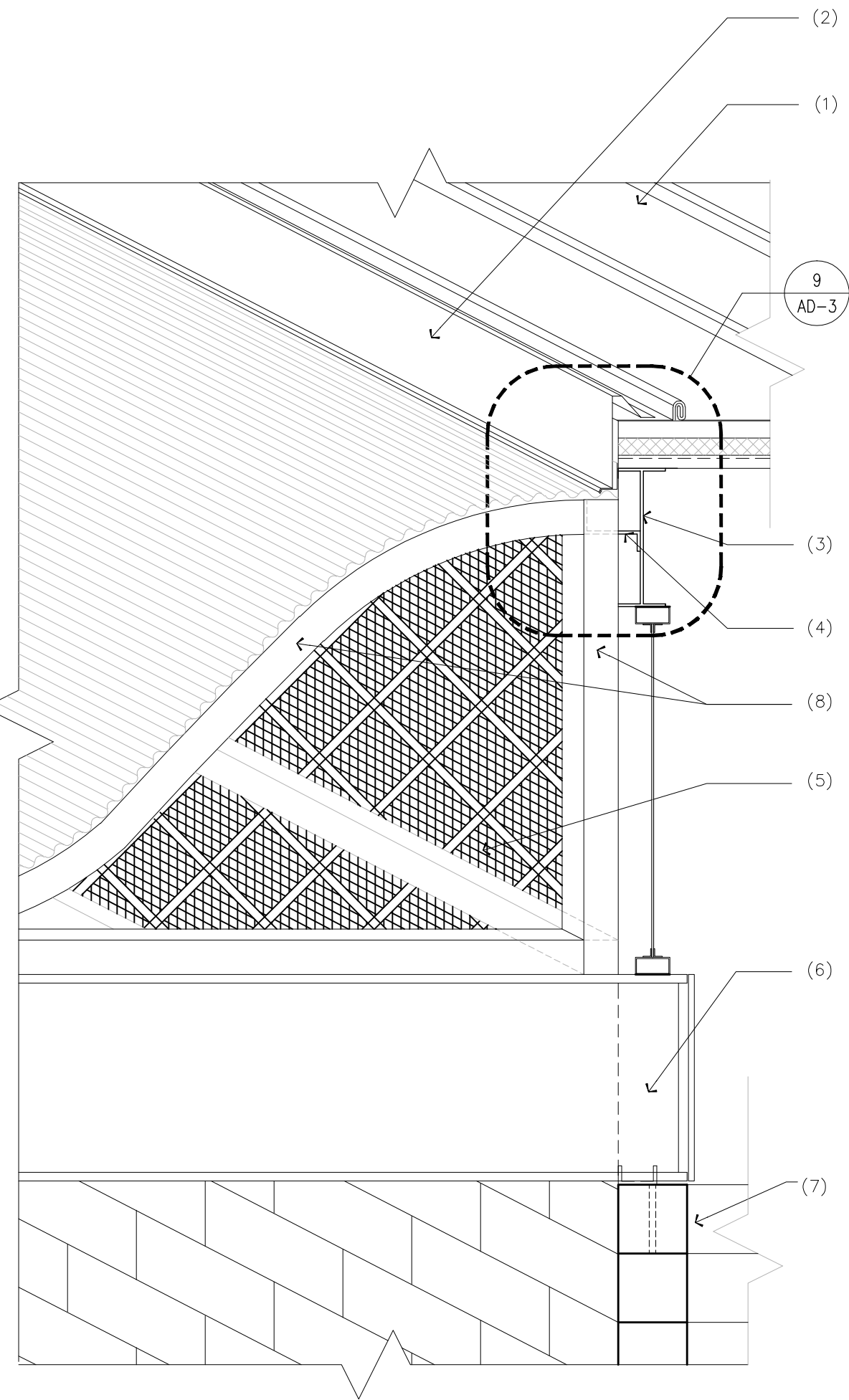


THE REPRODUCTION, COPY, OR USE OF THIS DRAWING WITHOUT THEIR PRIOR WRITTEN CONSENT IS PROHIBITED, AND ANY INFRINGEMENT WILL BE SUBJECT TO LEGAL ACTION.

**NOTES**

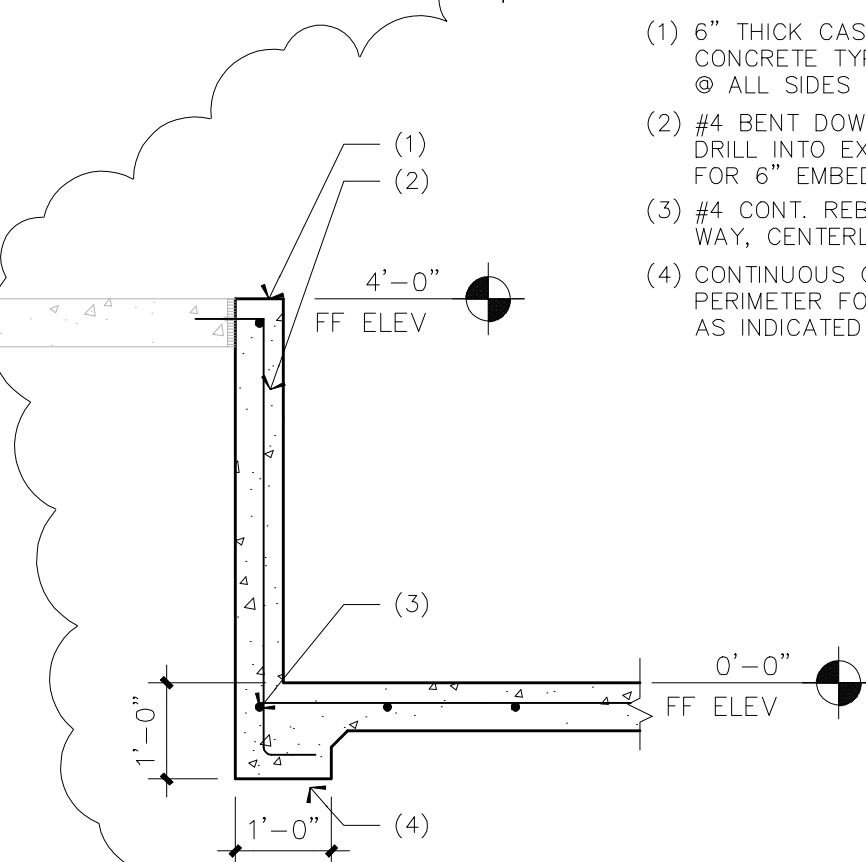
- (1) METAL ROOFING ASSEMBLY - SEE SHEET A-2.
- (2) METAL FLASHING PER MANUFACTURER'S REQUIREMENTS.
- (3) STEEL BEAM PER STRUCTURAL DWGS.
- (4) 3/8" THK X 2" WIDE X 6" BENT PLATE WELD ALL EDGES.
- (5) MESH ASSEMBLY. SEE DETAIL 1/A-5 FOR SIMILAR INFO.
- (6) STEEL BEAM PER STRUCTURAL DWGS.
- (7) CMU WALL ASSEMBLY - VERIFY W/ STRL. DWGS.
- (8) 4" SQ. X 1/4" THK. TUBE STEEL FRAME ASSEMBLY.



**14 SECTION @ CMU PARTITION**  
SCALE: 3/4" = 1'-0"

**NOTES**

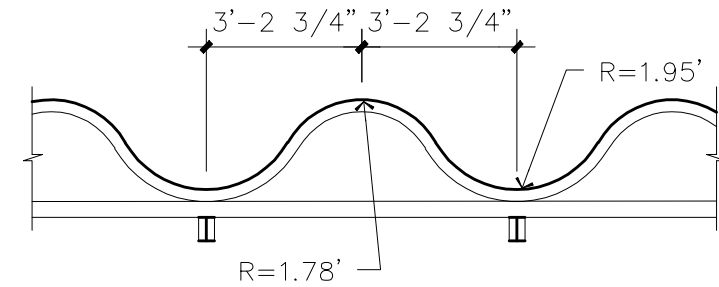
- (1) 6" THICK CAST IN PLACE CONCRETE TYPICAL @ ALL SIDES
- (2) #4 BENT DOWELS @ 12" O.C. DRILL INTO EXISTING CONCRETE FOR 6" EMBEDMENT
- (3) #4 CONT. REBAR @ 16" O.C. EA. WAY, CENTERLINE IN SLAB
- (4) CONTINUOUS CONCRETE PERIMETER FOOTING AS INDICATED



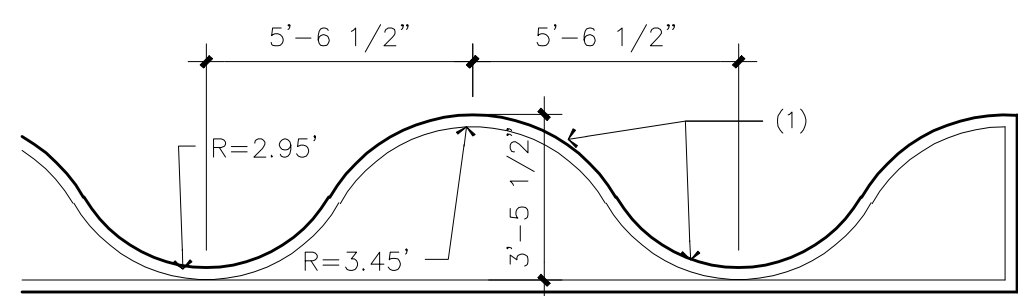
**15 NEW BACK WASH PIT**  
SCALE: 1/2" = 1'-0"

**NOTES**

- (1) 4" SQ. TUBE STEEL FRAME ASSEMBLY



TYPICAL FRAME @ POOL EQUIPMENT BUILDING

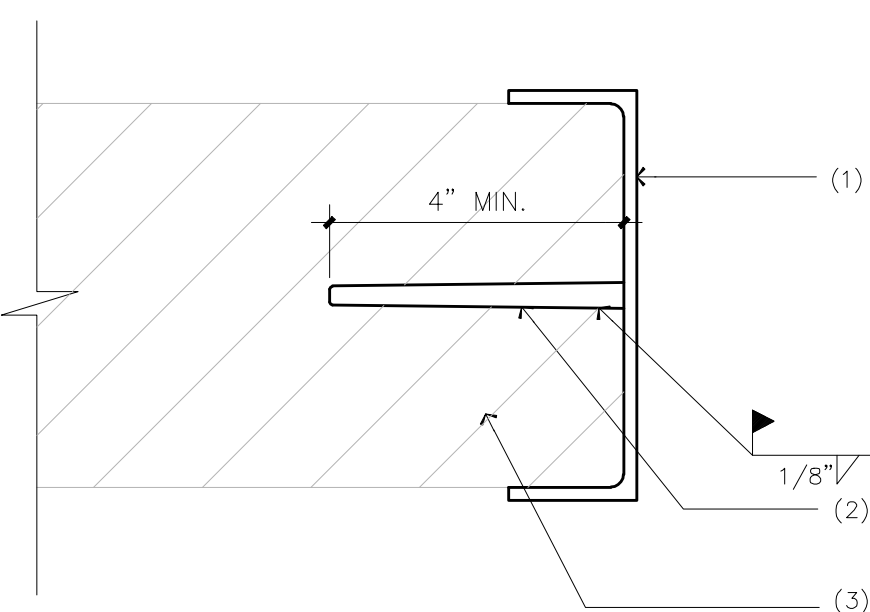


TYPICAL FRAME @ BATH HOUSE

**10 TUBE STEEL FRAME DIM.**  
SCALE: 1/4" = 1'-0"

**NOTES**

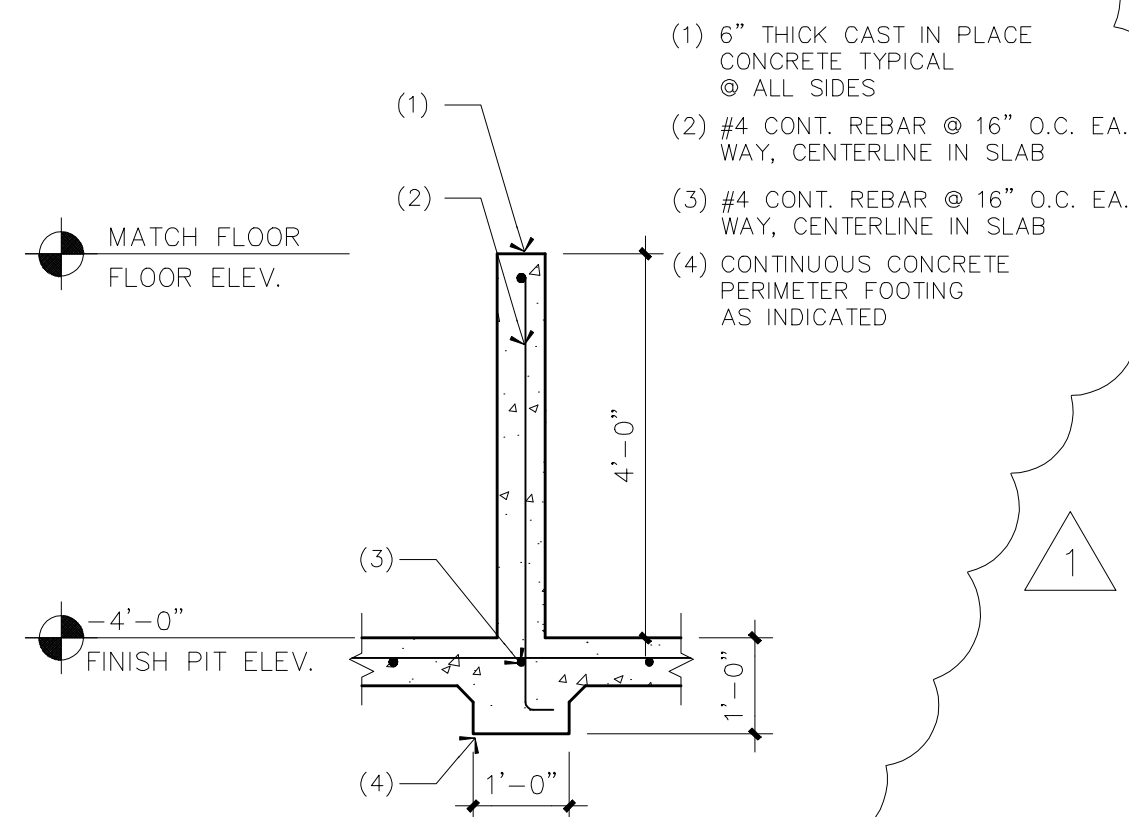
- (1) STEEL CHANNEL FRAME - TYP. @ JAMB & HEAD. PAINT TO MATCH BLDG. FIELD COLOR
- (2) ALL-THREAD ROD WELDED TO CHANNEL @ 24" O.C. VERTICAL TYP. @ JAMB. DRILL CMU & FASTEN W/ EPOXY ADHESIVE.
- (3) EXISTING CMU WALL ASSEMBLY



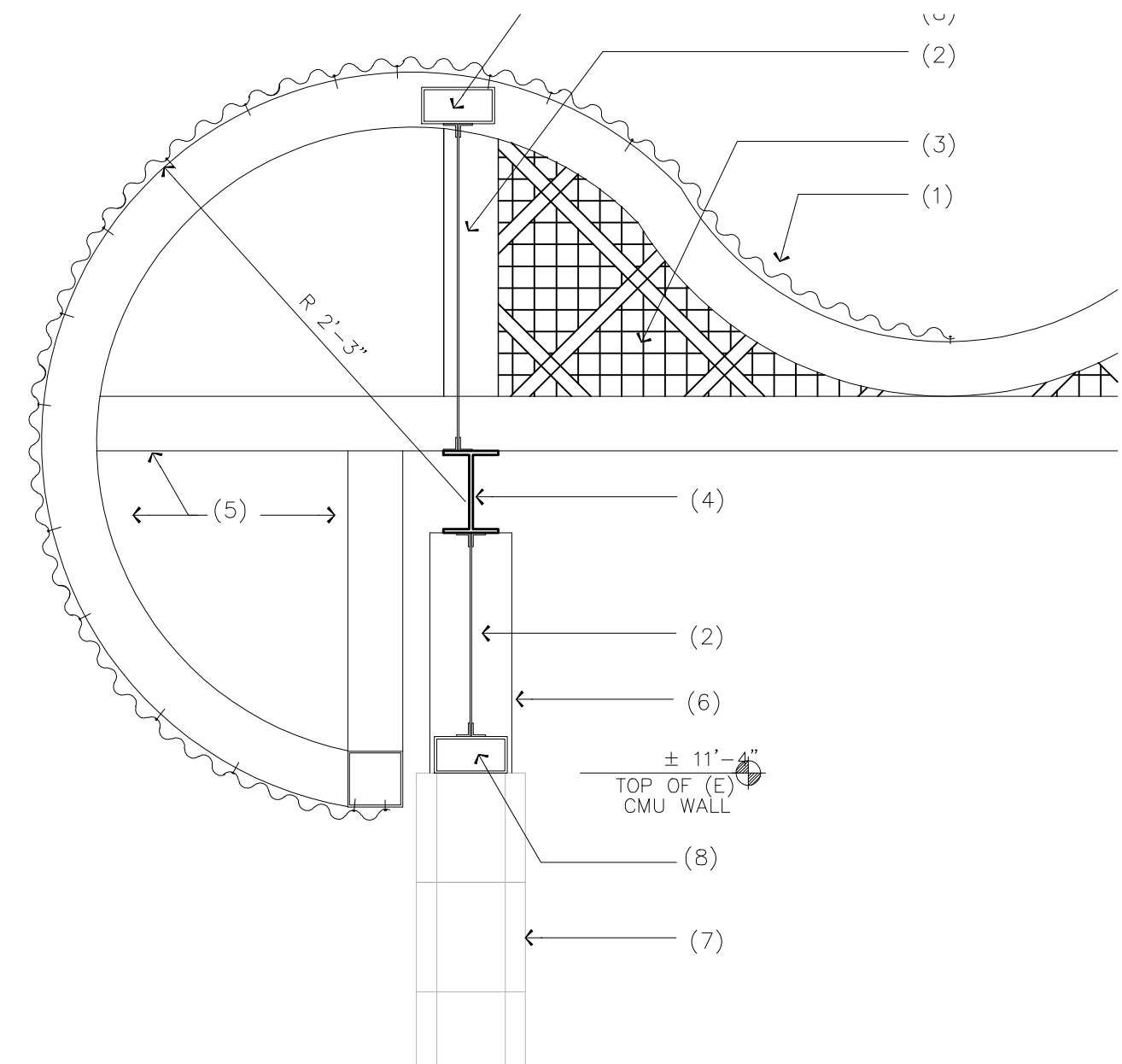
**11 CHAINLINK FENCE DETAIL**  
SCALE: 3" = 1'-0"

**NOTES**

- (1) 6" THICK CAST IN PLACE CONCRETE TYPICAL @ ALL SIDES
- (2) #4 CONT. REBAR @ 16" O.C. EA. WAY, CENTERLINE IN SLAB
- (3) #4 CONT. REBAR @ 16" O.C. EA. WAY, CENTERLINE IN SLAB
- (4) CONTINUOUS CONCRETE PERIMETER FOOTING AS INDICATED



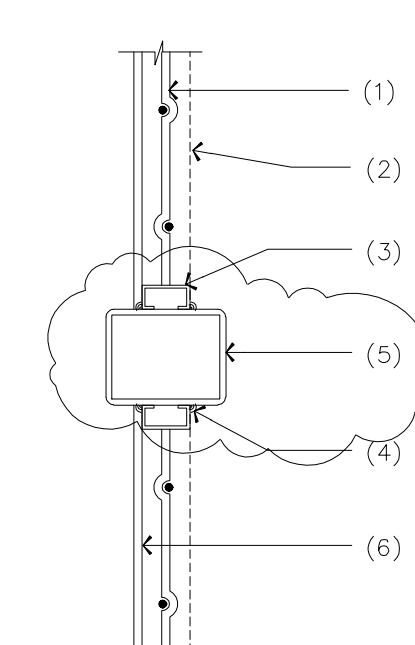
**12 NEW BACK WASH PIT**  
SCALE: 1/2" = 1'-0"



**7 EAVE DETAIL**  
SCALE: 1" = 1'-0"

**NOTES**

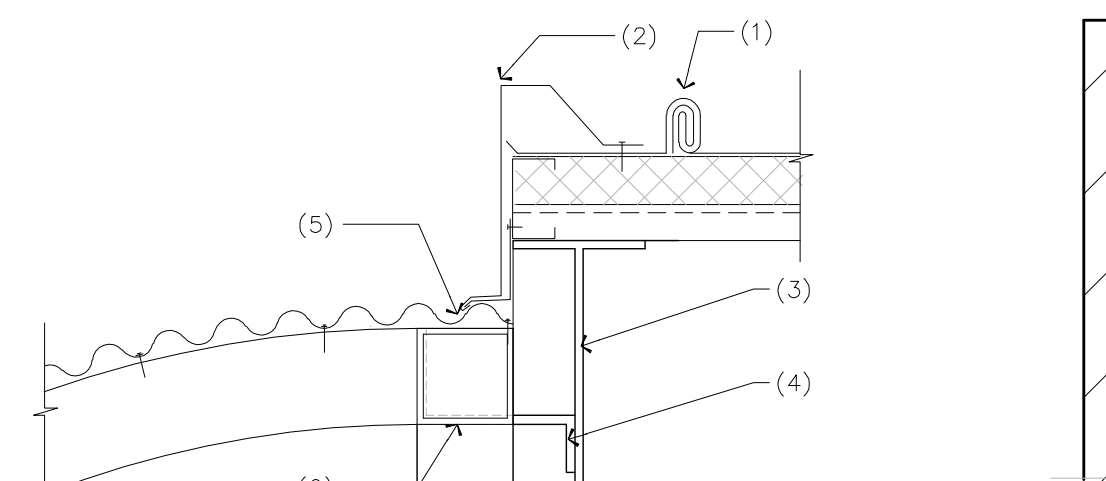
- (1) WOVEN WIRE INFILL ASSEMBLY
- (2) INSECT SCREEN ONLY @ EXTERIOR CMU WALLS & PERIMETER
- (3) ROLL FORMED CHANNEL
- (4) SPOT WELD @ 12" O.C.
- (5) TUBE STEEL FRAME
- (6) DIAGONAL METAL STRAP WELDED TO TUBE STEEL FRAME



**8 MESH ASSEMBLY DETAIL**  
SCALE: 3" = 1'-0"

**NOTES**

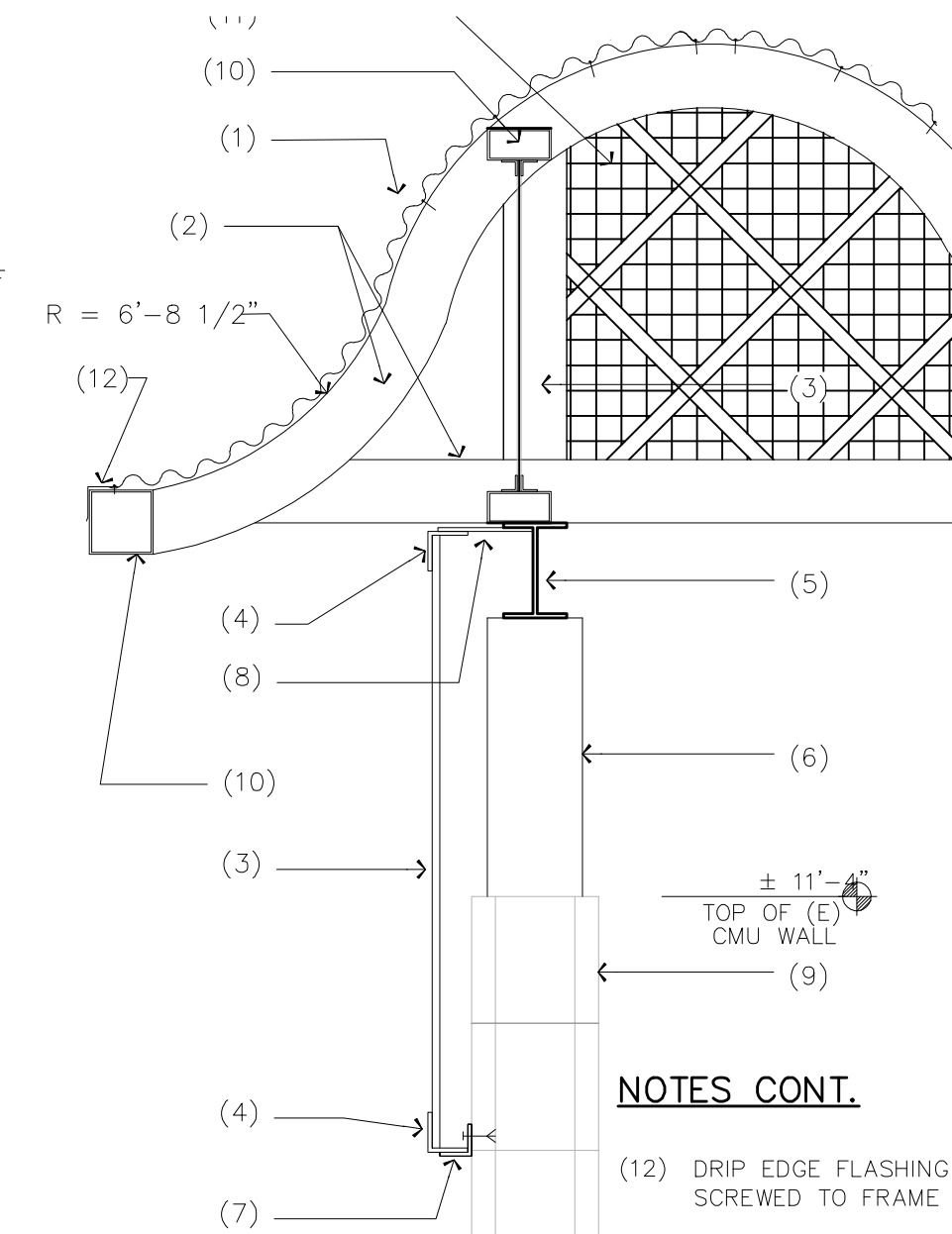
- (1) METAL ROOFING ASSEMBLY - SEE SHEET A-2.
- (2) 18 GA. METAL FLASHING PER MANUFACTURER'S REQUIREMENTS. LOWER EDGE OF FLASHING SHALL LAP OVER CONVEX CURVATURE OF CORRUGATED METAL ROOFING
- (3) STEEL BEAM PER STRUCTURAL DWGS.
- (4) 3/8" THK X 2" WIDE X 6" BENT PLATE WELD ALL EDGES
- (5) WELD ALL EDGES
- (6) 4X4 T.S. HORIZ. BRACE WELDED BETWEEN STRL. FRAMES, TYP.



**9 DETAIL**  
SCALE: 1 1/2" = 1'-0"

**NOTES**

- (1) CORRUGATED METAL ROOF
- (2) MESH ASSEMBLY SEE DETAIL 1/A-5 FOR SIMILAR INFO.
- (3) TYPICAL MESH ASSEMBLY OCCURS ONLY AT EAST AND WEST WALL LINE
- (4) STRUCTURAL BEAM
- (5) 4" X 4" TUBE STEEL FRAME ASSEMBLY - SEE STRUCTURAL FOR SPACING
- (6) TUBE STEEL SUPPORT PER STRUCTURAL
- (7) EXISTING CMU WALL
- (8) SEE DETAIL 6/AD-3 FOR SIMILAR INFORMATION



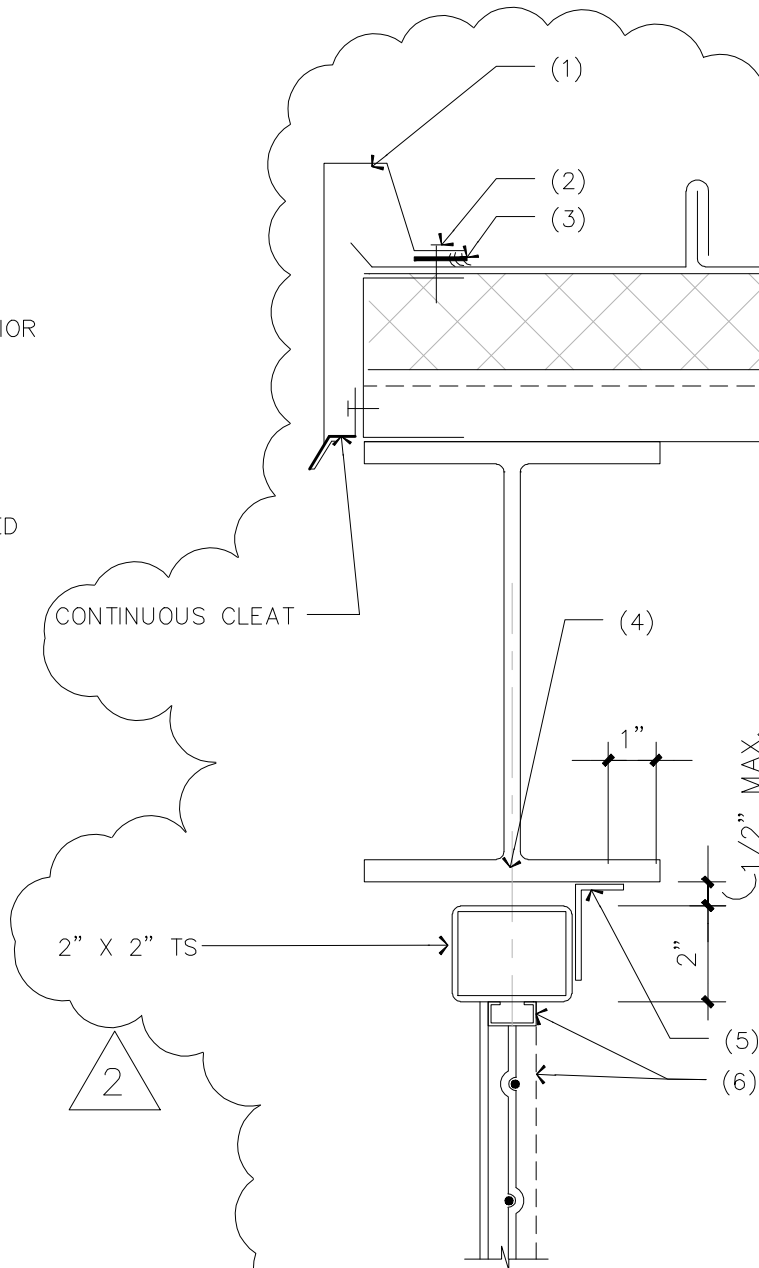
**1 EAVE DETAIL (EQUIPMENT BUILDING)**  
SCALE: 1" = 1'-0"

**NOTES CONT.**

- (3) MESH ASSEMBLY SEE DETAIL 1/A-5 FOR SIMILAR INFO.
- (4) 2 1/2" X 2 1/2" X 1/4" ANGLE FRAME.
- (5) STEEL BEAM PER STRUCTURAL
- (6) TUBE STEEL SUPPORT PER STRUCTURAL
- (7) 2" X WIDE X 1/4" THICK BENT PLATE - 3 PER MESH PANEL - ATTACH TO CMU W/ SHOT PIN
- (8) 2" X 6" X 1/4" X 2" WIDE WELD PLATE - 3 PER MESH PANEL
- (9) EXISTING CMU WALL
- (10) 2" X 2" X 1/4" THK STEEL TUBE. WELD TO 4" X 4" TUBE STEEL
- (11) TYPICAL METAL MESH ASSEMBLY TO FACE OF CMU BEYOND
- (12) DRIP EDGE FLASHING SCREWED TO FRAME

**NOTES**

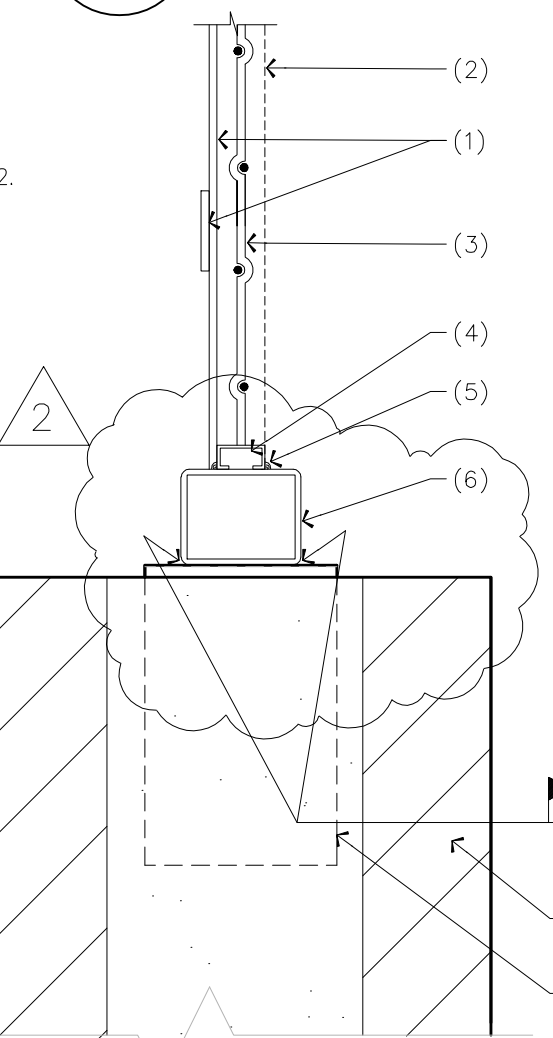
- (1) G.I. METAL ROOF EDGE FLASHING PER MFG. REQUIREMENTS - PAINT TO MATCH ROOFING
- (2) SELF TAPPING SCREWS BY ROOFING MFG.
- (3) CONTINUOUS NEOPRENE BETWEEN FLASHING & ROOFING
- (4) POSITION TUBE STEEL FRAME CENTERED ON STEEL BEAM
- (5) 1/8" THK. X 1" WIDE BENT PLATE WELDED TO STEEL BEAM @ 12" O.C. FIELD WELD TUBE STEEL BENT PLATE W/ 1/4" FILLET WELD ALL AROUND.
- (6) SEE DTL. 6/AD-1 FOR SIMILAR INFO. FIELD WELD TUBE STEEL TO BENT PLATE W/ 1/8" EQUAL COORDINATE W/ FILLET WELD ALL AROUND



**5 MESH ASSEMBLY DETAIL**  
SCALE: 3" = 1'-0"

**NOTES**

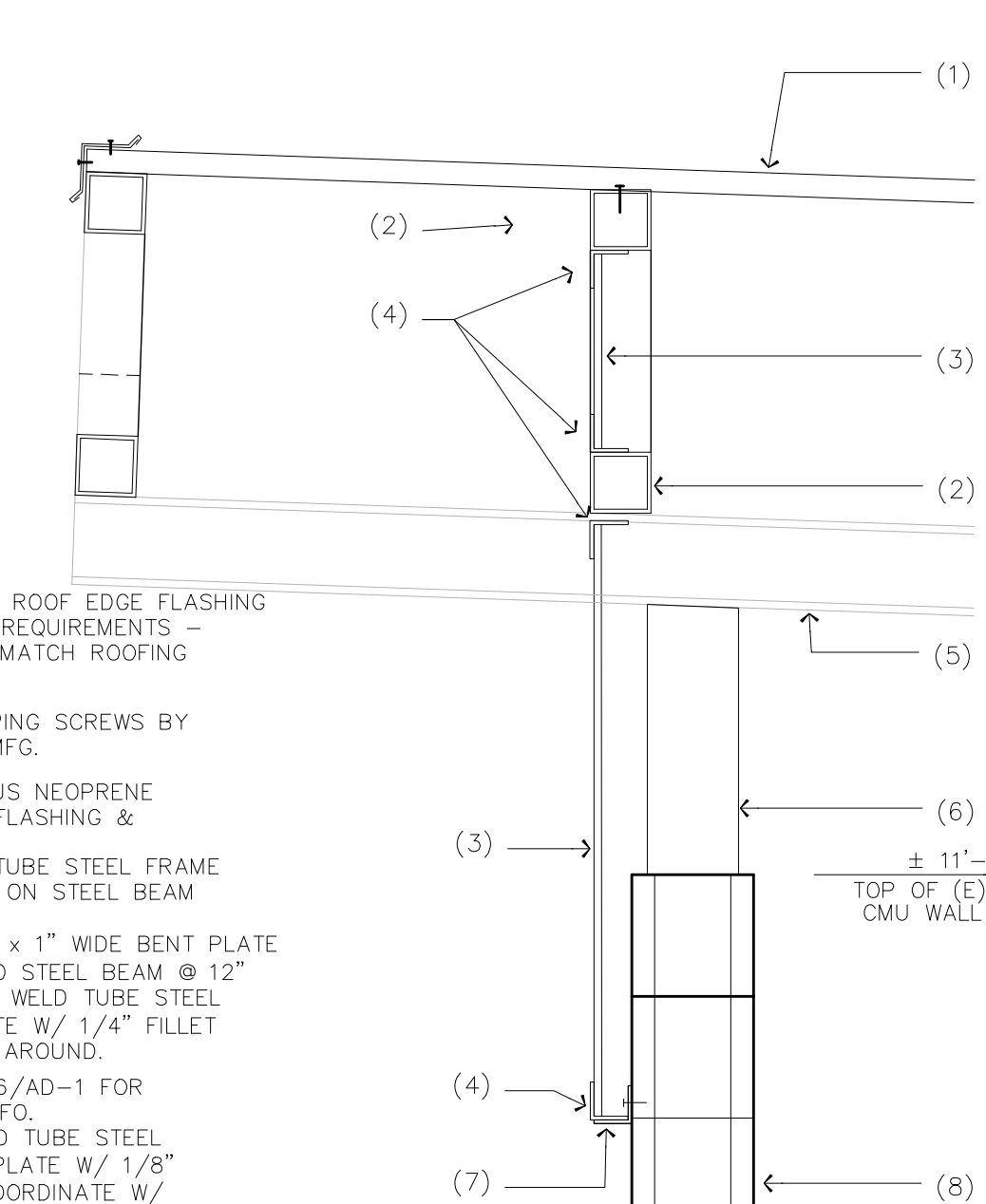
- (1) DIAGONAL METAL STRAP WELDED TO TUBE STEEL FRAME W/ 1/8" FILLET WELD
- (2) INSECT SCREEN ONLY @ EXTERIOR CMU WALLS & PERIMETER
- (3) WOVEN WIRE INFILL ASSEMBLY
- (4) ROLL FORMED CHANNEL
- (5) SPOT WELD @ 12" O.C.
- (6) TUBE STEEL FRAME
- (7) CMU WALL ASSEMBLY
- (8) 1/4" THK X 4 1/2" WIDE X 9" LONG BENT PLATE STRAP - EMBED 6" INTO SOLID GROUT
- (9) CONT. 24 GA. GALV. METAL FLASHING & COUNTER FLASHING TO TOP OF CMU



**6 MESH ASSEMBLY DETAIL**  
SCALE: 3" = 1'-0"

**NOTES**

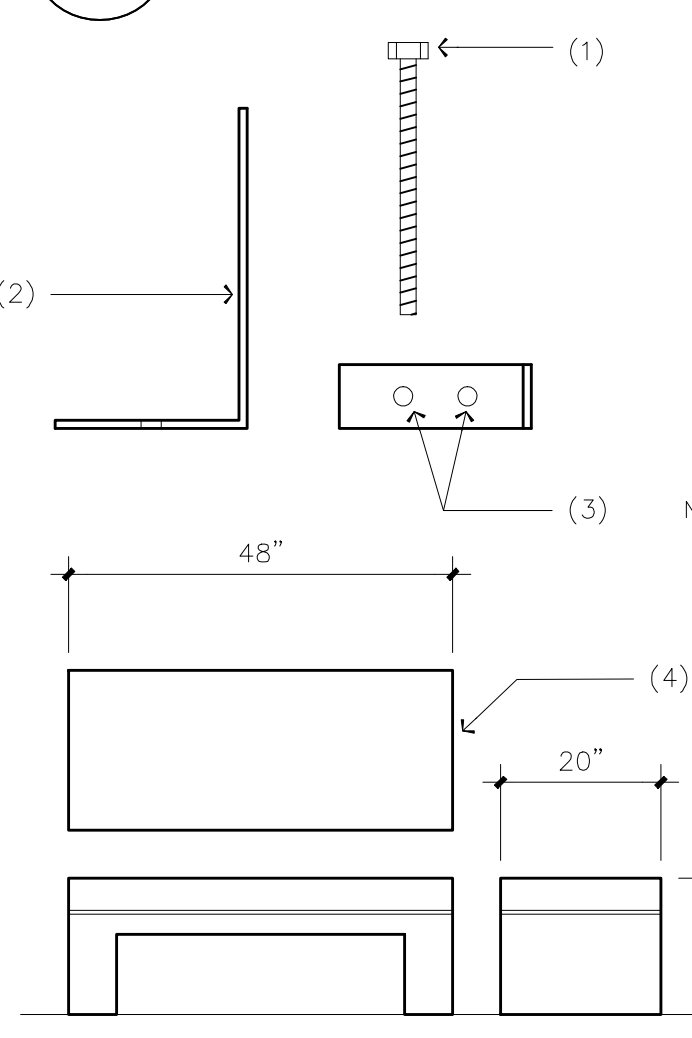
- (1) CORRUGATED METAL ROOFING OVER STRUCTURAL ATTACH DIRECTLY TO T.S. FRAME W/ GALV. SELF TAPPING SCREWS
- (2) 4" X 4" TUBE STEEL FRAME ASSEMBLY - SEE STRUCTURAL FOR SPACING; REFER TO DTL. 10/AD-3 FOR SHAPE OF FRAME
- (3) MESH ASSEMBLY SEE DETAIL 1/A-5 FOR SIMILAR INFO.
- (4) 2 1/2" X 2 1/2" X 1/4" ANGLE FRAME.
- (5) STEEL BEAM PER STRUCTURAL
- (6) TUBE STEEL SUPPORT PER STRUCTURAL
- (7) 2" X WIDE X 1/4" THICK BENT PLATE - 3 PER MESH PANEL - ATTACH TO CMU W/ SHOT PIN
- (8) 2" X 6" X 1/4" X 2" WIDE WELD PLATE - 3 PER MESH PANEL
- (9) EXISTING CMU WALL
- (10) 2" X 2" X 1/4" THK STEEL TUBE. WELD TO 4" X 4" TUBE STEEL
- (11) TYPICAL METAL MESH ASSEMBLY TO FACE OF CMU BEYOND



**2 OVERHANG DETAIL**  
SCALE: 1" = 1'-0"

**NOTES**

- (1) 1 1/2" CORRUGATED METAL ROOFING OVER STRUCTURAL ATTACH DIRECTLY TO T.S. FRAME PER STRUCTURAL
- (2) 4" X 4" TUBE STEEL FRAME ASSEMBLY - SEE STRUCTURAL FOR SPACING
- (3) MESH ASSEMBLY SEE DETAIL 1/A-5 FOR SIMILAR INFO.
- (4) 2 1/2" X 2 1/2" X 1/4" ANGLE FRAME.
- (5) STRUCTURAL BEAM
- (6) TUBE STEEL SUPPORT PER STRUCTURAL
- (7) 2" X 2" X 1/4" THK STEEL TUBE. WELD TO 4" X 4" TUBE STEEL
- (8) EXISTING CMU WALL



**3 BENCH DETAIL**  
NO SCALE

**RECORD DRAWINGS**  
AS-BUILT INFORMATION WAS PROVIDED BY THE CONTRACTOR. WESTAR ARCHITECTURAL GROUP / NEVADA INC. ASSUMES NO LIABILITY FOR ACCURACY OF IT'S CONTENTS.

REVISIONS  
 PLAN REVIEW COMMENTS 3/12/01  
 AS-BUILTS - 06/24/02  
 A 2 A  
 WESTAR ARCHITECTURAL GROUP / NEVADA INC.  
 LAS VEGAS \* PHOENIX  
 ARCHITECTURE \* PLANNING \* PROJECT MANAGEMENT  
 3900 MEADOWS LANE SUITE 220 LAS VEGAS, NEVADA 89107  
 TELEPHONE: (702) 878-0000 FAX: (702) 878-8430  
 A POOL RENOVATION FOR:  
 BAKER PARK  
 1020 E. ST. LOUIS AVE.  
 LAS VEGAS, NEVADA  
 DRAWN BY: JF  
 REVIEWED BY: JG  
 PROJECT NUMBER: 9910.10  
 ISSUE DATE: 11.07.2000  
 AD-3 ARCHITECTURAL DETAILS  
 092505E 9910.10.05.1/1  
 0801015E