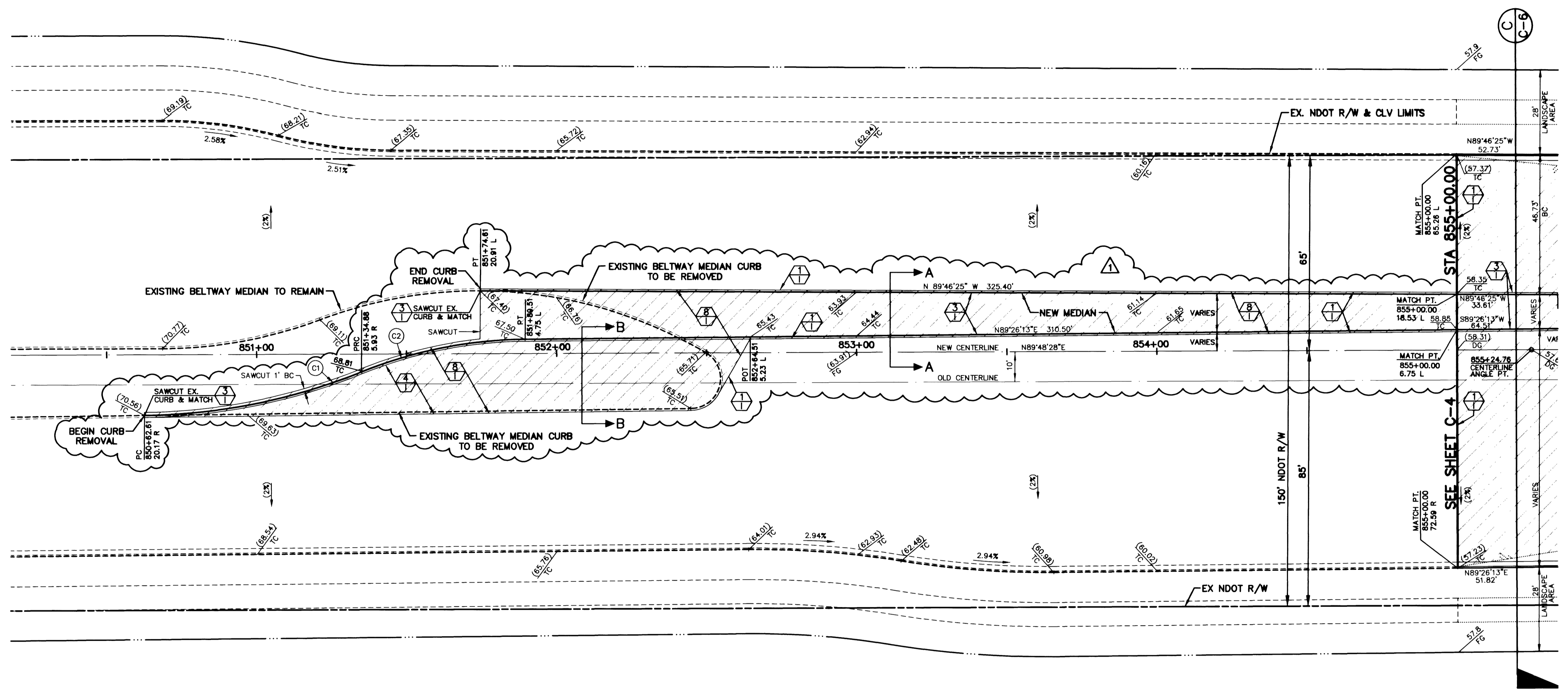
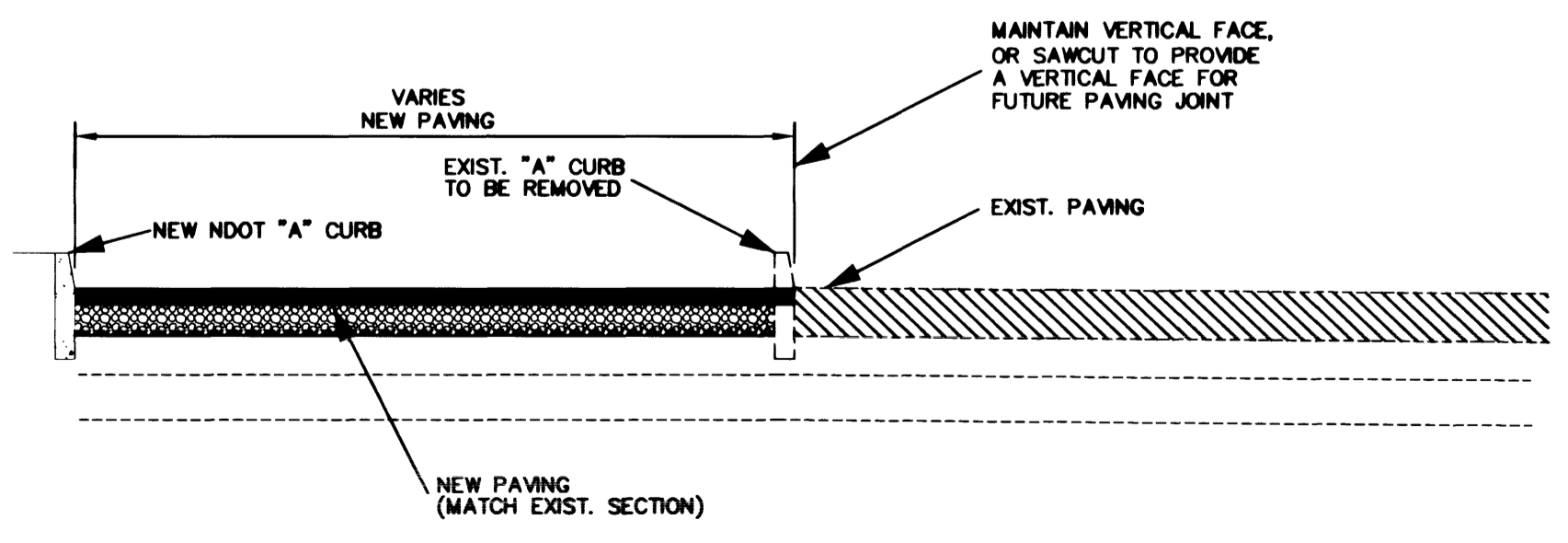
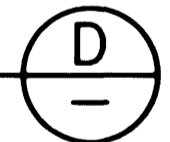


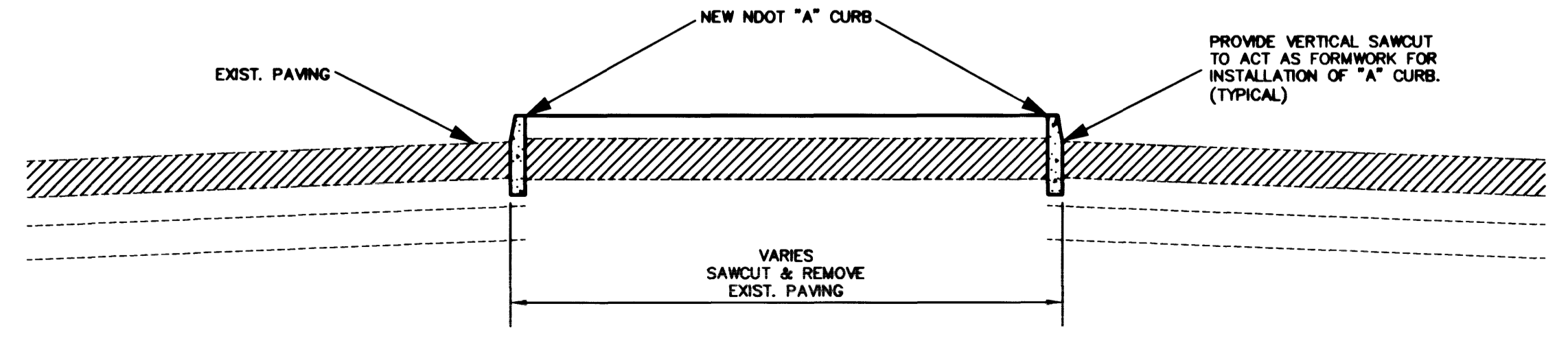
CURVE TABLE			
No.	Delta	Radius	Length
C1	21°13'31"	200.00	74.09
C2	21°23'06"	150.00	55.99



BELTWAY MODIFICATIONS
SCALE: 1"=20'



SECTION B-B
SCALE: N.T.S.



SECTION A-A
SCALE: N.T.S.

Avoid cutting underground utility lines. It's costly.
Call before you Dig.
1-800-227-2600
UNDERGROUND SERVICE (USA)

Avoid hitting overhead power lines. It's costly.
CALL BEFORE YOU DO OVERHEAD
1-702-593-6111

BASIS OF BEARING
NORTH 89°45'05" EAST BEING THE SOUTH LINE OF THE SOUTHWEST QUARTER (SW 1/4) OF SECTION 35, TOWNSHIP 20, RANGE 59 EAST, M.D.M., AS SHOWN BY MAP ON FILE IN FILE 91, PAGE 28 OF PARCEL MAPS IN THE CLARK COUNTY RECORDER'S OFFICE, CLARK COUNTY, NEVADA.

BENCHMARK
NDOT BRASS REFERENCE CAP, 50.00 FEET RIGHT OF STATION 787+19.42 OF CHARLESTON BLVD. (NO. 0LV09-345S66)
*3209.81 NAVD 1988 DATUM (978.351 M)
3207.61 SUMMERLIN DATUM
* THIS PROJECT BASED ON NAVD 1988 DATUM

SUMMERLIN
CHARLESTON BOULEVARD
WESTERN BELTWAY TO PAVILION CENTER DRIVE
BELTWAY MODIFICATIONS AND MISC. DETAILS

SHEET
C-7
7 OF 11 SHTS
JOB NO. 62012.218

29477

Replot

107-v 3343