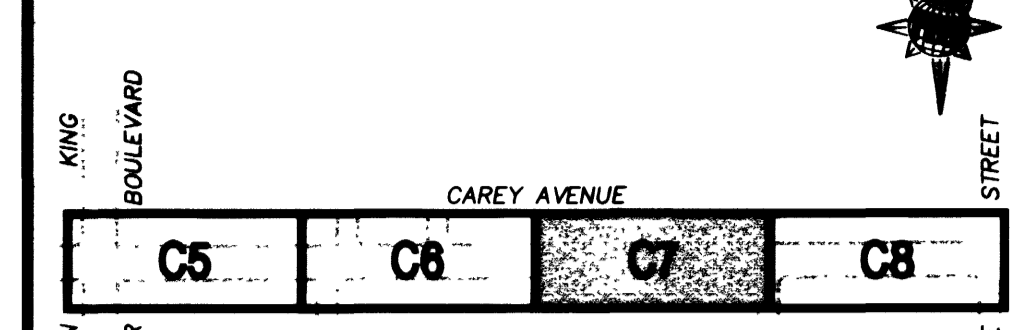


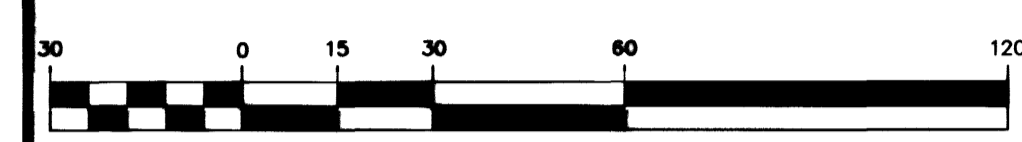
Call before you Dig
1-800-227-2600
Nevada Power Environment and Safety Services Department

Call before you Overhead
1-702-593-6111
Nevada Power Environment and Safety Services Department

SHEET INDEX



GRAPHIC SCALE



BASIS OF BEARING

SOUTH 89°44'50" WEST BEING THE NORTH LINE OF THE NORTHEAST QUARTER (NE 1/4) OF SECTION 21, TOWNSHIP 20 SOUTH, RANGE 61 EAST, M.D.M., CLARK COUNTY, NEVADA, AS SHOWN BY A MAP ON FILE IN THE OFFICE OF THE CLARK COUNTY RECORDER AS FILE NO. OF PARCEL MAPS, PAGE 99.

BENCHMARK

NORTH LAS VEGAS BENCHMARK NO. NLV0122NWS- RIVET AND 2" ROUND AL DISK IN TOP OF CURB AT THE SOUTHEAST CORNER OF CAREY AVENUE AND 7TH STREET

NAVD 1988 DATUM
ELEVATION = 623.275 METERS
2044.86 FEET

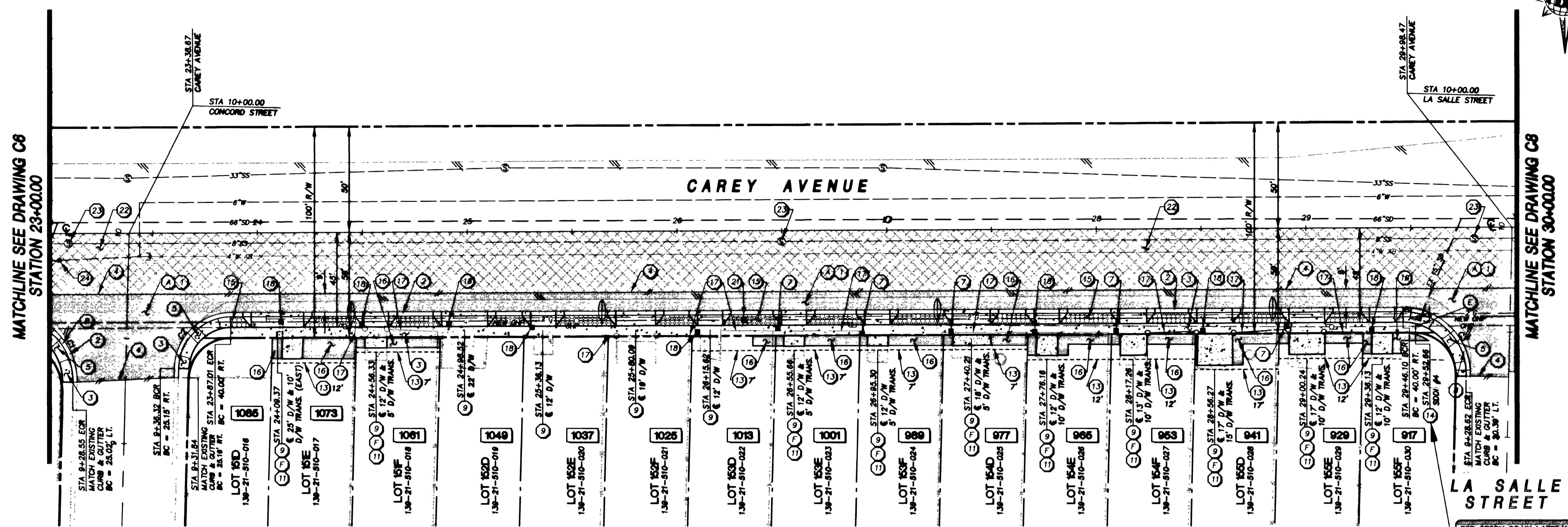
CAUTION
EXISTING UTILITIES ARE LOCATED ON THE PLANS FROM A SEARCH OF AVAILABLE RECORDS. CONTRACTOR TO VERIFY LOCATIONS AND DEPTHS PRIOR TO CONSTRUCTION.

REVISIONS

NO.	DATE	DESCRIPTION	APPROVED

STREET REHABILITATION DESIGN
DRAWN BY: LSB
DESIGNED BY: W.HORLACHER
DATE: DECEMBER 10, 1999
JOB NO.: 51737

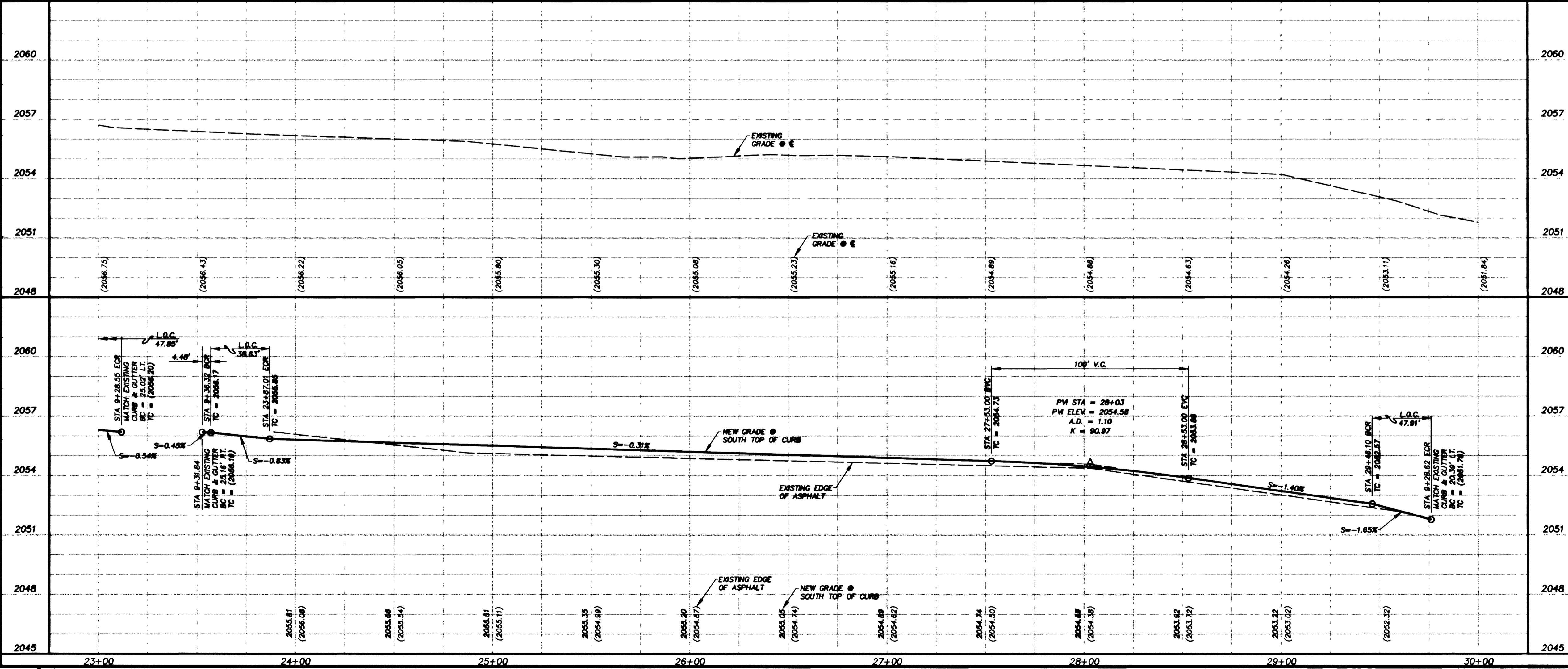
Professional Engineer - State of Nevada
Name: W.H. Horlacher
No. 10,731



CURVE DATA

No.	RADIUS	DELTA	LENGTH	TANGENT	BACK OF CURB
C1	30.00'	91°23'12"	47.85'	30.73'	
C2	25.00'	88°32'37"	38.63'	24.37'	
C3	30.00'	91°36'31"	35.52'	20.18'	

FOR RELOCATION OF EXISTING SIGNS SEE DWGS. 21 & 22
DATE 12-14-99
LVWD 10/11/99



KEY NOTES

- REMOVAL ITEMS**
- (A) REMOVE EXISTING AC PAVEMENT.
 - (B) REMOVE EXISTING CURB & GUTTER.
 - (C) REMOVE EXISTING RESIDENTIAL DRIVEWAY.
 - (D) REMOVE EXISTING TREES.
 - (E) REMOVE EXISTING DROP INLET.
 - (F) REMOVE EXISTING DRIVEWAY TRANSITION.
- CONSTRUCTION ITEMS**
- (1) CONSTRUCT 4" AC OVER 8" TYPE II PER TYPICAL SECTION C3.
 - (2) CONSTRUCT "L" TYPE CURB & GUTTER PER CC AREA STD. DWG. #216.
 - (3) CONSTRUCT 5' SIDEWALK PER CC AREA STD. DWG. #234.
 - (4) SAWCUT AND MATCH EXISTING.
 - (5) CONSTRUCT SIDEWALK RAMP PER CC AREA STD. DWG. #235.
 - (6) ADJUST FIRE HYDRANT TO FG PER CC AREA STD. DWG. #516.
 - (7) INSTALL NON TRAFFIC BEARING LVWD METER BOX & ADJUST SERVICE CONNECTION AS NEEDED PER UDACS PLATE NO. 1B.
 - (8) ADJUST LVWD METER BOX TO FG.
 - (9) CONSTRUCT RESIDENTIAL DRIVEWAY PER STD. DWG. #223.
 - (10) ADJUST EXISTING VALVE BOX PER STD. DWG. #517.
 - (11) CONSTRUCT CONCRETE DRIVEWAY TRANSITION (MATCH EXISTING THICKNESS - 4" MIN., AND EXISTING WIDTH).
 - (12) PAINT CURB RED 15' EACH SIDE OF FIRE HYDRANT EXCEPT FOR DRIVEWAYS.
 - (13) CONSTRUCTION EASEMENT AS NOTED.
 - (14) CONSTRUCT 4" TYPE "A" DROP INLET PER STD. DWG. #411. REFER TO DETAIL "B" DWG. C10 FOR ADDITIONAL NOTES. REFER TO DWG. C9 FOR LATERAL PROFILES.
 - (15) CONSTRUCT 5' STAMPED CONCRETE SIDEWALK.
 - (16) REGRADE TO DRAIN (IRRIGATION & LANDSCAPE REPAIR).
 - (17) REMOVE CONFLICTING PORTIONS OF FENCE AND RELOCATE TO BEHIND RIGHT-OF-WAY.
 - (18) INSTALL LVWD TRAFFIC BEARING METER BOX & ADJUST SERVICE CONNECTION AS NEEDED PER CC AREA STD. DWG. #508.
 - (19) ADJUST EXISTING PULLBOX TO GRADE.
 - (20) RELOCATE EXISTING MAILBOX TO BEHIND RIGHT-OF-WAY.
 - (21) NEW POWER POLE (LOCATION AND INSTALLATION PER NEVADA POWER COMPANY).
 - (22) COLDMILL EXISTING PAVEMENT TO 2" DEPTH, REPLACE WITH 2" NEW AC PER TYPICAL SECTION C3.
 - (23) CONSTRUCT CONCRETE COLLAR AROUND EXISTING MANHOLE PER STD. DWG. #408.
 - (24) CONSTRUCT CONCRETE COLLAR AROUND EXISTING WATER VALVE PER STD. DWG. #517.

Department of Public Works
CAREY AVENUE ROADWAY IMPROVEMENTS
CAREY AVENUE PLAN AND PROFILE
STA 23+00.00 TO STA 30+00.00



DRAWING No. 7
C7
PLAN# 107-V3033

AS-BUILT 12-27-00