

1501011.dwg 11-29-00 3:32:44 pm PST

### BENCHMARK NAVD 88

CITY OF LAS VEGAS BENCHMARK NUMBER 1LV002NNW6 BEING A RIVET AND SQUARE PLATE IN THE TOP OF CURB, LONE MOUNTAIN ROAD, 550 FEET EAST OF RANCHO ROAD, SOUTH CURB LINE  
ELEVATION (NAVD88) = 705.4188 METERS = 2314.36 FEET

### BASIS OF BEARINGS

SOUTH 00°04'13" WEST BEING THE EAST LINE OF THE NORTHWEST QUARTER (NW 1/4) OF SECTION 2, TOWNSHIP 20 SOUTH, RANGE 60 EAST, M.D.M., AS SHOWN ON THAT CERTAIN RECORD OF SURVEY, FILE 95, PAGE 49, CLARK COUNTY OFFICIAL RECORDS, CLARK COUNTY, NEVADA.

### WATER QUANTITIES (PUBLIC) THIS SHEET ONLY

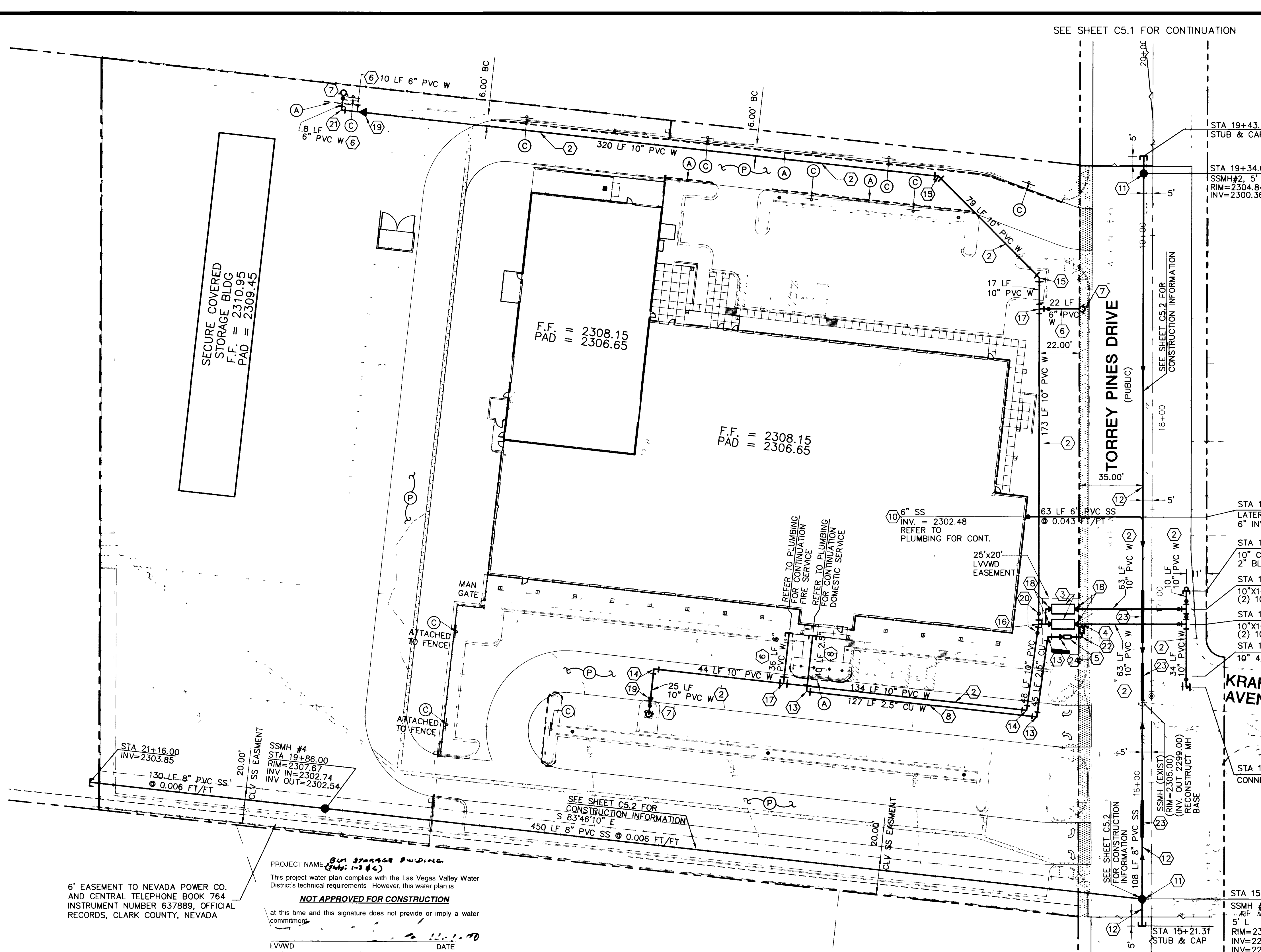
- 2" COPPER LINE 5 LF
- 2" METER 1 EA
- 2" 90° ELL 1 EA
- 2" RPPA 1 EA
- 10" PVC 170 LF
- 10" TAPPING GATE VALVE 1 EA
- 10" 45° ELL 1 EA
- 10"x10"x10" TEE 2 EA
- 12"x10" TAPPING SLEEVE 1 EA
- 10"x8" REDUCER 2 EA
- 10" GATE VALVE 5 EA
- 8" DCDA 2 EA
- 10" CAP W/2" BLOWOFF 1 EA

NOTES  
QUANTITIES ARE SHOWN FOR INFORMATION ONLY TO ILLUSTRATE THE PROJECT SCOPE. IDENTIFY QUANTITIES INDEPENDENTLY AS REQUIRED FOR ALL OTHER PURPOSES.

### WATER QUANTITIES (PRIVATE) THIS SHEET ONLY

- 2.5" COPPER LINE 220 LF
- 2.5" 90° ELL 3 EA
- 10" PVC 868 LF
- 10" 45° ELL 3 EA
- 10" 90° ELL 2 EA
- 10"x10"x10" TEE 2 EA
- 10"x6"x10" TEE 2 EA
- 10"x6" REDUCER 2 EA
- 10"x8" REDUCER 2 EA
- 10" GATE VALVE 2 EA
- 6" PVC 40 LF
- 6" 45° ELL 1 EA
- 6" 90° ELL 1 EA
- FIRE HYDRANT ASSEMBLY 3 EA

PROJECT NAME: **BLM STORAGE BUILDING**  
(Job: 1-284)  
This project water plan complies with the Las Vegas Valley Water District's technical requirements. However, this water plan is **NOT APPROVED FOR CONSTRUCTION** at this time and this signature does not provide or imply a water commitment.  
LVVWD #52 DATE 11-29-00



- #### UTILITY CONSTRUCTION KEYNOTES
- INSTALL 12" x10" M.J. TAPPING SLEEVE, 10" TAPPING VALVE 10" 45° VERT ELL
  - INSTALL 10" PVC WATER LINE IN ACCORDANCE WITH UDACS AND DETAIL
  - INSTALL 8" DCDA IN ACCORDANCE WITH UDACS AND UDS PLATE NO. 20 B
  - INSTALL 2" SERVICE CONNECTION AND METER IN ACCORDANCE WITH UDACS AND UDS PLATE NO. 10
  - INSTALL 2" RPPA IN ACCORDANCE WITH UDACS AND UDS PLATE NO. 11A
  - INSTALL 6" PVC WATER LINE IN ACCORDANCE WITH UDACS AND DETAIL
  - INSTALL NEW FIRE HYDRANT IN ACCORDANCE WITH UDACS AND UDS PLATE NO. 7
  - INSTALL 2.5" COPPER WATER LINE IN ACCORDANCE WITH UDACS
  - INSTALL 6" SEWER LATERAL IN ACCORDANCE WITH DCSWCS AND DETAIL
  - INSTALL CLEAN OUT IN ACCORDANCE WITH DETAIL
  - INSTALL 48" ECCENTRIC MANHOLE IN ACCORDANCE WITH DCSWCS DWG. SD-1.
  - CONSTRUCT 8" PVC SDR 35 SEWER LINE IN ACCORDANCE WITH DCWCS AND DETAIL.
  - INSTALL 2.5" 90° ELL IN ACCORDANCE WITH UDACS
  - INSTALL 10" 90° ELL IN ACCORDANCE WITH UDACS
  - INSTALL 10" 45° ELL IN ACCORDANCE WITH UDACS
  - INSTALL 10"x10"x10" TEE IN ACCORDANCE WITH UDACS
  - INSTALL 10"x6"x10" TEE IN ACCORDANCE WITH UDACS
  - INSTALL 10"x8" REDUCER IN ACCORDANCE WITH UDACS
  - INSTALL 10"x6" REDUCER IN ACCORDANCE WITH UDACS
  - INSTALL 10" GATE VALVE IN ACCORDANCE WITH UDACS
  - INSTALL 6" 90° ELL IN ACCORDANCE WITH UDACS
  - INSTALL 2" 90° ELL IN ACCORDANCE WITH UDACS
  - INSTALL SEWER LINE ENCASUREMENT 10' BEFORE AND 10' AFTER WATER LINE CROSSING IN ACCORDANCE WITH DCSWCS DWG. SD-22.
  - INSTALL 2"x2.5" REDUCER IN ACCORDANCE WITH UDACS

#### FIRE FLOW CALCULATIONS

FIRE FLOW REQUIREMENT IS 2875 GALLONS PER MINUTE AT 20 PSI RESIDUAL PRESSURE BASED ON:

SQUARE FOOTAGE	44765 SQ FT
LARGEST AREA BETWEEN 4-HOUR AREA SEPARATION WALLS	N.A. SQ FT
BUILDING HEIGHT	21.33' (LARGER PORTION OF SF 16.67')
NUMBER OF STORIES	1 FLOOR
TYPE OF CONSTRUCTION	V-N (WITH AREA INCREASE)
OCCUPANCY	B
FULL AUTOMATIC FIRE SPRINKLER SYSTEM	YES

SEWER AVERAGES  
AVERAGE DAILY FLOW RATE: 1100 GAL/DAY  
PEAK FLOW RATE: 1320 GAL/DAY

- #### FIRE KEYNOTES
- (A) PAINT CURBS WITH INDUSTRIAL GRADE ENAMEL (SAFETY RED) WHERE INDICATED
  - (C) INSTALL 12" x 18" (R7-ID) NO PARKING SIGNS, WITH SEPARATE SUPPLEMENTAL "FIRE LANE" PLATE MOUNTED BELOW THE SYMBOL PLATE
  - (P) FIRE LANE PER CLV FIRE NOTE 22, SHEET C2.2. 45 FEET OUTSIDE AND 22 FEET INSIDE TURNING RADIUS.

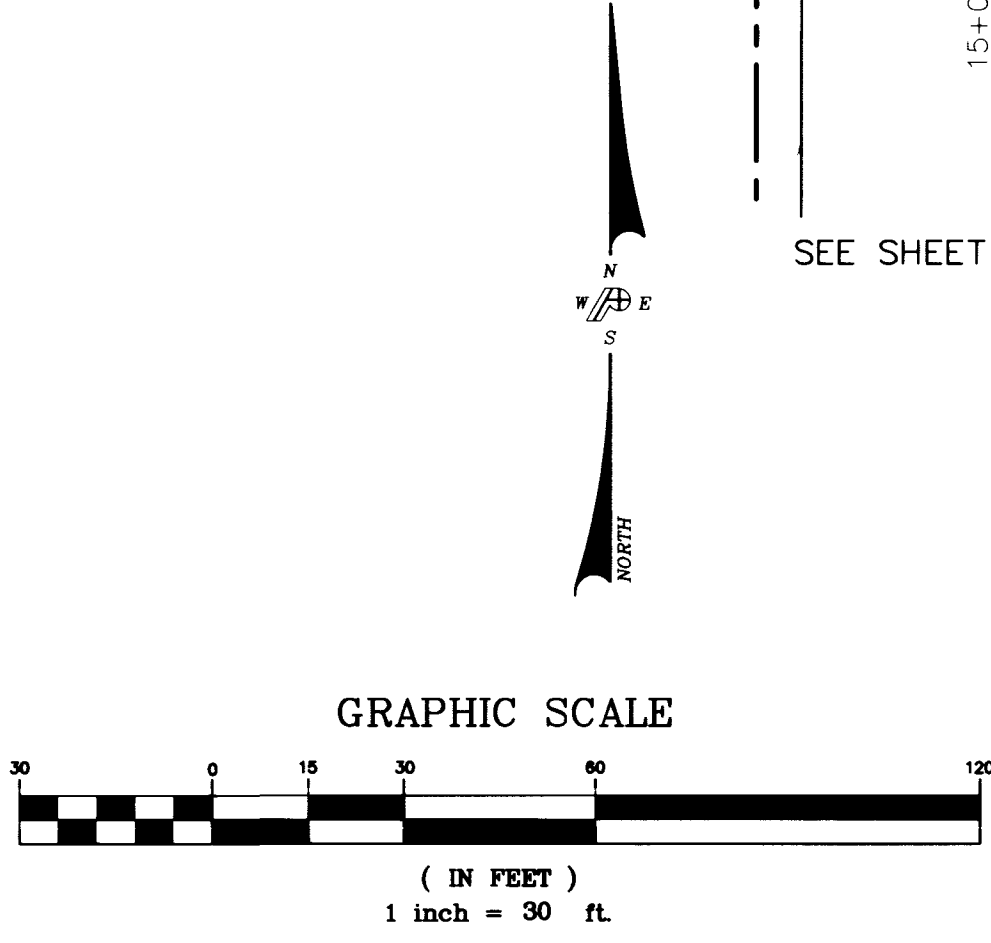
#### APPROVALS

*[Signature]* 11/30/00  
FIRE DEPARTMENT DATE  
(APPROVAL BY THE FIRE DEPARTMENT HAVING JURISDICTION IS REQUIRED PRIOR TO OBTAINING FINAL APPROVAL FROM LVVWD)

*[Signature]* 12/21/00  
LAS VEGAS VALLEY WATER DISTRICT DATE

#### UTILITY NOTE:

UTILITY LOCATIONS SHOWN HEREON ARE APPROXIMATE ONLY. IT SHALL BE THE CONTRACTOR'S RESPONSIBILITY TO DETERMINE THE EXACT VERTICAL AND HORIZONTAL LOCATION OF ALL EXISTING UNDERGROUND UTILITIES PRIOR TO COMMENCING CONSTRUCTION. NO REPRESENTATION IS MADE THAT ALL EXISTING UTILITIES ARE SHOWN HEREON. THE ENGINEER ASSUMES NO RESPONSIBILITY FOR UTILITIES NOT SHOWN OR UTILITIES NOT SHOWN IN THEIR PROPER LOCATION.



**WA FRANCIS CONSTRUCTION**  
P.O. BOX 71871  
SALT LAKE CITY, UTAH 84171  
(801) 973-9774

**POGGEMEYER DESIGN GROUP**  
ENGINEERS PLANNERS SURVEYORS  
LANDSCAPE ARCHITECTS  
2801 NORTH TENAYA WAY LAS VEGAS, NEVADA 89128 (702) 255-8100

**UTILITY PLAN**

**BLM STORAGE BUILDING RANCHO/TORREY PINES DR.**

SHEET: 09.07.00  
DESIGNED BY: ELK  
CHECKED BY: SLW  
PROJECT NO.: 00044

DATE: 09.07.00  
DATE: 09.07.00  
SCALE: 1" = 30 HOR.  
1" = NTS VERT.

SEAL: ENGINEER STATE OF NEVADA  
CHRISTINA L SWALLOW  
CIVIL  
No. 13714

SHEET: 6 OF 13 SHEETS  
CLV DRAWING NO. 107-V 3368