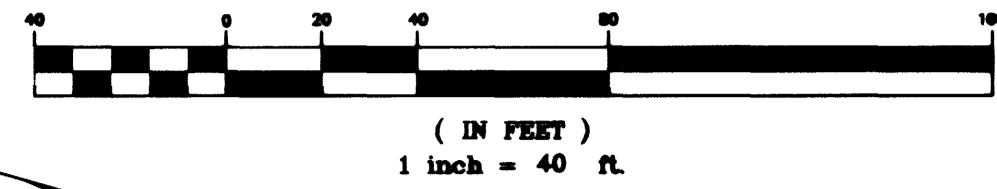


CONSTRUCTION NOTES:

- 33 CONSTRUCT RECTANGULAR CONCRETE CHANNEL
- 34 CONSTRUCT CONCRETE CHANNEL TRANSITION
- 35 CONSTRUCT TRAPEZOIDAL CONCRETE CHANNEL
- 36 CONSTRUCT 6" CHAINLINK FENCE

GRAPHIC SCALE



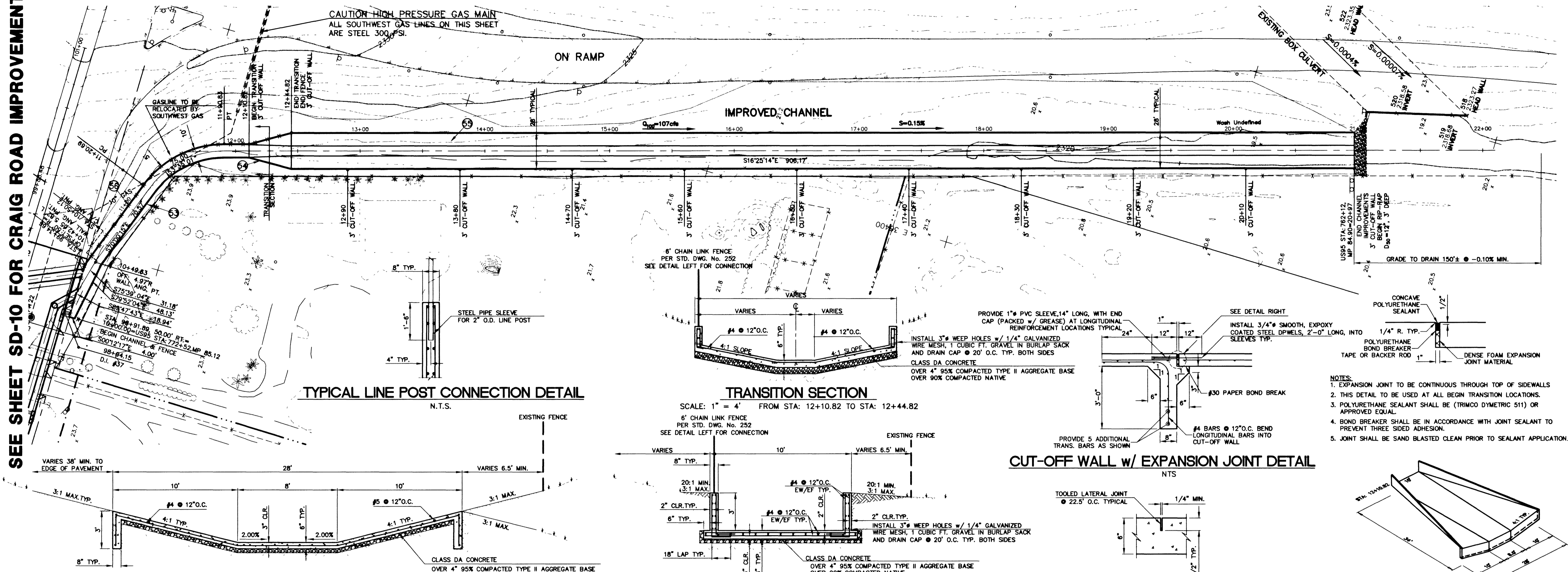
BASIS OF BEARING

NORTH 39°40'38" WEST BEING THE BEARING OF THE LINE FROM POINT 825 TO POINT No. 808 AS SHOWN BY THAT CERTAIN RECORD OF THE SURVEY ON FILE IN THE OFFICE OF THE CLARK COUNTY RECORDER, CLARK COUNTY, NEVADA IN FILE 88, PAGE 53. SAID BEARING BEING BASED ON THE NORTH AMERICAN DATUM OF 1983 (NAD '83), NEVADA STATE PLANE EAST ZONE(2701)

BENCHMARK

NAVD 88- CLV BENCH 1LV003W4
CLV PIN & PLATE IN TOP OF ELEC. BASE SOUTH SIDE OF CRAIG RD., 250' +/- EAST OF BUFFALO DR.
ELEVATION 7147.730 METERS, 2344.91 FEET

SEE SHEET SD-10 FOR CRAIG ROAD IMPROVEMENTS



TYPICAL LINE POST CONNECTION DETAIL
N.T.S.

TRANSITION SECTION
SCALE: 1" = 4' FROM STA: 12+10.82 TO STA: 12+44.82

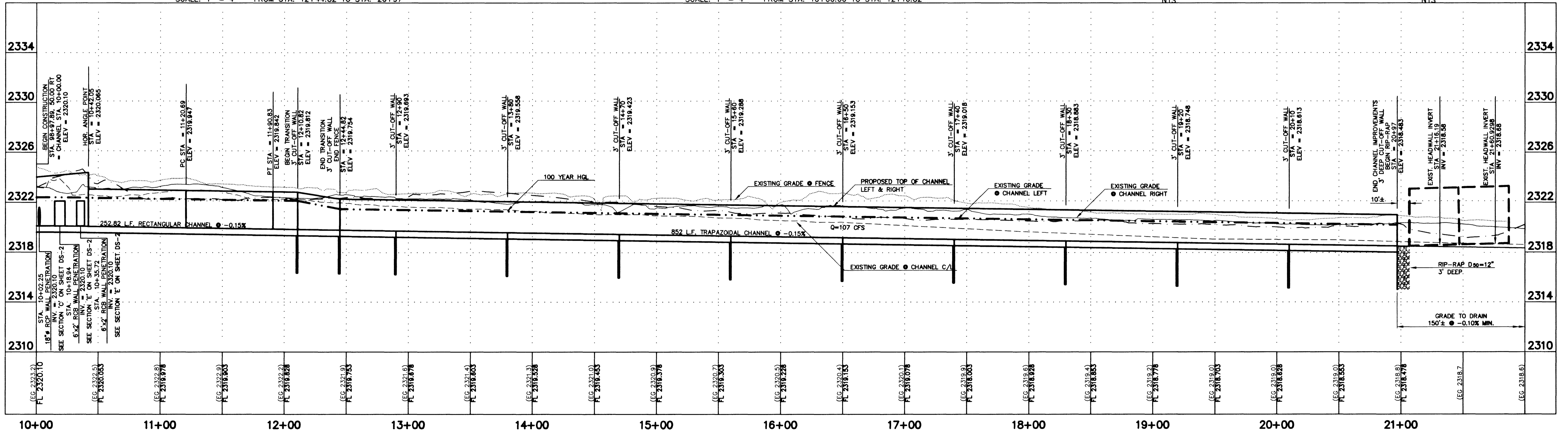
CUT-OFF WALL w/ EXPANSION JOINT DETAIL
N.T.S.

STORM DRAIN TRAPEZOIDAL CHANNEL TYPICAL SECTION
SCALE: 1" = 4' FROM STA: 12+44.82 TO STA: 20+97

STORM DRAIN RECTANGULAR CHANNEL TYPICAL SECTION
SCALE: 1" = 4' FROM STA: 10+00.00 TO STA: 12+10.82

LATERAL CONTROL JOINT DETAIL
N.T.S.

TRANSITION ISOMETRIC VIEW
N.T.S.



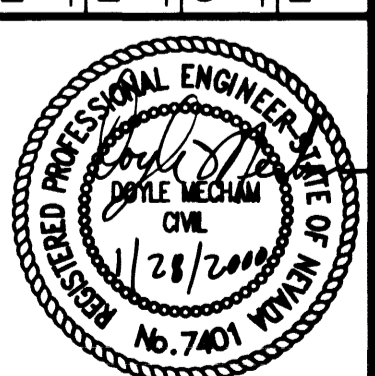
CITY OF LAS VEGAS
739 SOUTH FOURTH STREET
LAS VEGAS, NEVADA 89101

**STORM DRAIN CHANNEL
CRAIG ROAD IMPROVEMENTS**

URS Greiner
2785 EAST DESERT INN ROAD
LAS VEGAS, NEVADA 89121
(702)-796-7775 FAX (702)-796-1803

**CRAIG ROAD
IMPROVEMENTS
BID NO. 00-1730-23**

SHEET	7/20/98
TITLE	7/20/98
DRAWN BY:	DMS/MRA
DESIGNED BY:	DMS/MRA
CHECKED BY:	DM
PROJECT NO:	44300
SCALE:	1" = 40' HOR. 1" = 4' VERT.
DATE	7/20/98
BY	
REV.	



SHEET
SD-11
47 OF 55 SHEETS
DRAWING NO.
107-V3048

26376