

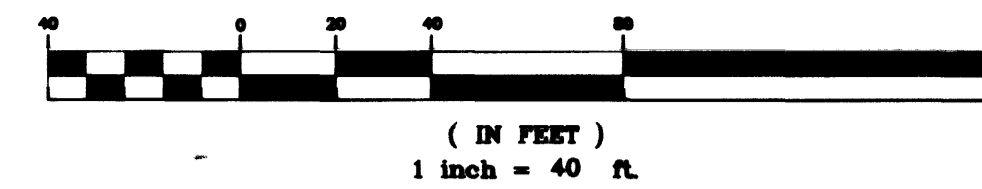
CONSTRUCTION NOTES:

- 32 INSTALL 60" TYPE I MANHOLE PER STD. DWG. 403
- 33 CUT & JOIN 1 STD. 18" RCP PIPE LENGTH @ 1.00% MIN. PER DETAILS ON SHEET SD-10
- 34 INSTALL 42" RCP STORM DRAIN
- 35 INSTALL 1 STD. 18" RCP PIPE LENGTH @ 1.00% MIN. AND CAP END
- 36 FUTURE 18" RCP STORM DRAIN
- 37 FUTURE 3" DROP INLET PER DETAIL 3 ON SHEET DS-1
- 38 FUTURE 6" DROP INLET PER DETAIL 4 ON SHEET DS-1
- 39 FUTURE 9" DROP INLET PER DETAIL 4 ON SHEET DS-1

PIPE TRENCH NOTES:

- 1. IN UNPAVED AREAS INSTALL PIPE PER STD. DETAIL #502
- 2. IN EXISTING PAVED AREAS & STREET CROSSING INSTALL PIPE PER STD. DETAIL #504 EXCEPT USE TYPE II AGGREGATE IN AREA 2 FEET BELOW PAVEMENT. COMPACTED TO 95%.

GRAPHIC SCALE

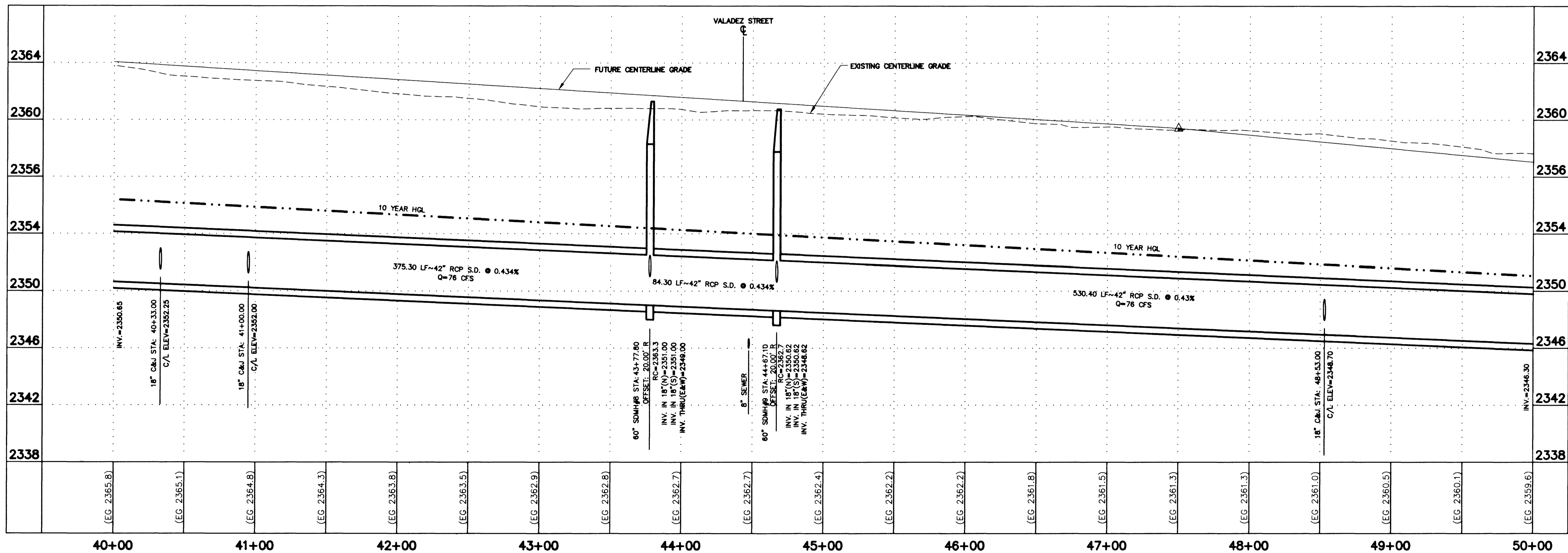
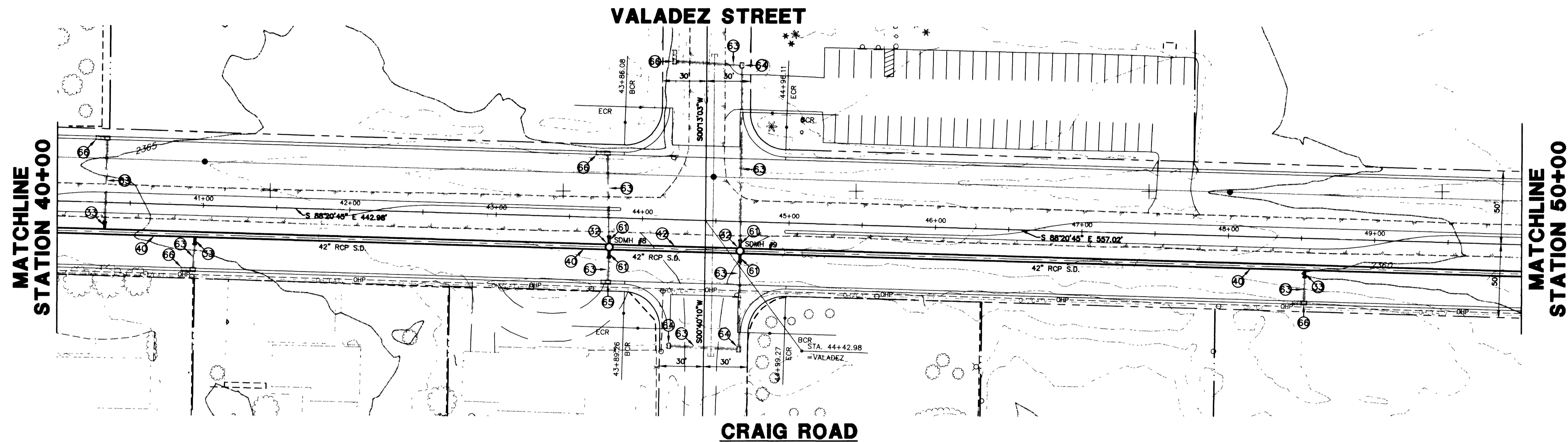


BASIS OF BEARING

NORTH 39°40'38" WEST BEING THE BEARING OF THE LINE FROM POINT 825 TO POINT No. 808 AS SHOWN BY THAT CERTAIN RECORD OF THE SURVEY ON FILE IN THE OFFICE OF THE CLARK COUNTY RECORDER, CLARK COUNTY, NEVADA IN FILE 88, PAGE 53. SAID BEARING BEING BASED ON THE NORTH AMERICAN DATUM OF 1983 (NAD '83), NEVADA STATE PLANE EAST ZONE(2701)

BENCHMARK

NAVD 88- CLV BENCH 1LV003W4
CLV PIN & PLATE IN TOP OF ELEC. BASE
SOUTH SIDE OF CRAIG RD., 250' +/- EAST
OF BUFFALO DR.
ELEVATION 714.730 METERS, 2344.91 FEET



Call before you Overhead

1-702-593-6111

NEVADA POWER CORPORATION & SOUTHWEST POWER CORPORATION

Call before you Dig.

1-800-227-2800

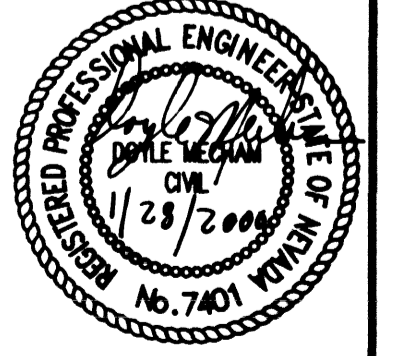
NEVADA POWER CORPORATION & SOUTHWEST POWER CORPORATION

CITY OF LAS VEGAS
731 SOUTH FOURTH STREET
LAS VEGAS, NEVADA 89101

42" STORM DRAIN PLAN AND PROFILE STA. 40+00 TO STA. 50+00

CRAIG ROAD IMPROVEMENTS BID NO. 00.1730.23

URS Greiner
2785 EAST DESERT INN ROAD
LAS VEGAS, NEVADA 89121
(702)-796-7775 FAX (702)-796-1803



SHEET **SD-4**
40 OF 55 SHEETS
DRAWING NO. **107-V3048**

24369