

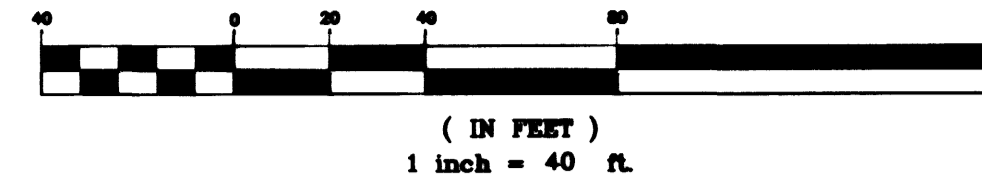
CONSTRUCTION NOTES:

- 22 INSTALL 8" SEWER LATERAL PER STD. DWG(S) SD-12, SD-166 & SD-17
- 23 CONSTRUCT 48" SANITARY SEWER MANHOLE PER STD. DWG(S) SD-1, SD-6, & SD-7
- 24 INSTALL 15" SANITARY SEWER LINE
- 25 INSTALL 8" WATERLINE PER UDACS STD. PLATE No. 6C
- 26 INSTALL 2" BLOW-OFF ASSEMBLY PER UDACS STD. PLATE No. 4
- 27 ADJUST VALVE BOX PER UDACS STD. PLATE No. 8
- 28 REMOVE CAP & THRUST BLOCK AND CONNECT TO EXISTING 8" WATER

PIPE TRENCH NOTES:

- 1. IN EXISTING AND NEW PAVED AREAS & STREET CROSSING INSTALL PIPE PER STD. DETAIL #504 EXCEPT USE TYPE II AGGREGATE IN AREA 2 FEET BELOW PAVEMENT.

GRAPHIC SCALE

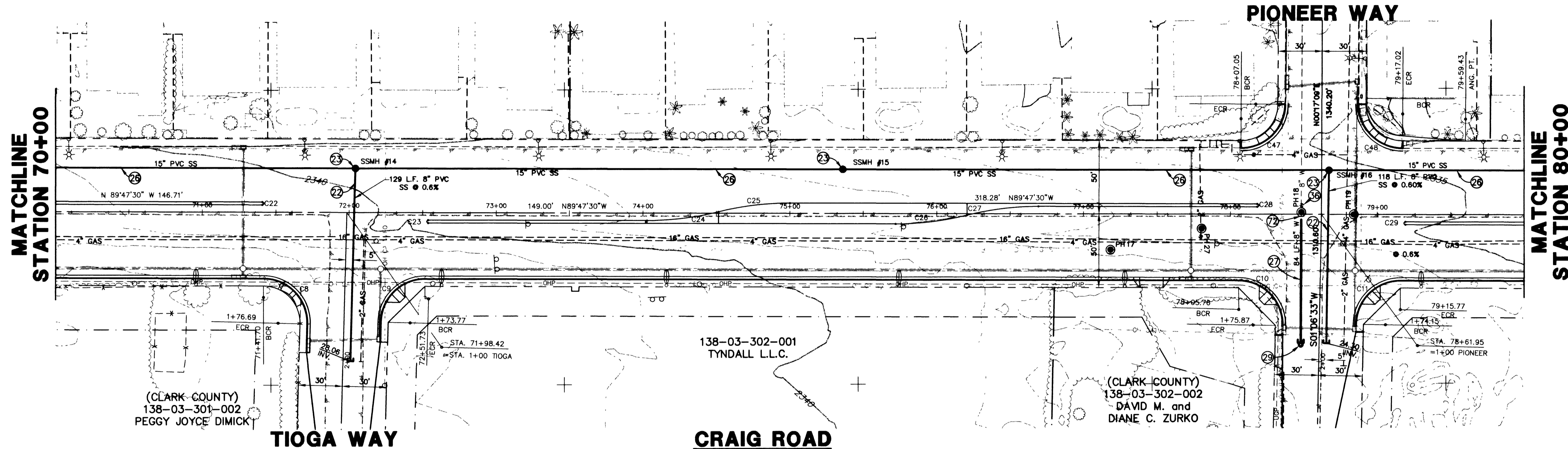


BASIS OF BEARING

NORTH 39°40'38" WEST BEING THE BEARING OF THE LINE FROM POINT 825 TO POINT No. 808 AS SHOWN BY THAT CERTAIN RECORD OF THE SURVEY ON FILE IN THE OFFICE OF THE CLARK COUNTY RECORDER, CLARK COUNTY, NEVADA IN FILE 88, PAGE 53, SAID BEARING BEING BASED ON THE NORTH AMERICAN DATUM OF 1983 (NAD '83), NEVADA STATE PLANE EAST ZONE(2701)

BENCHMARK

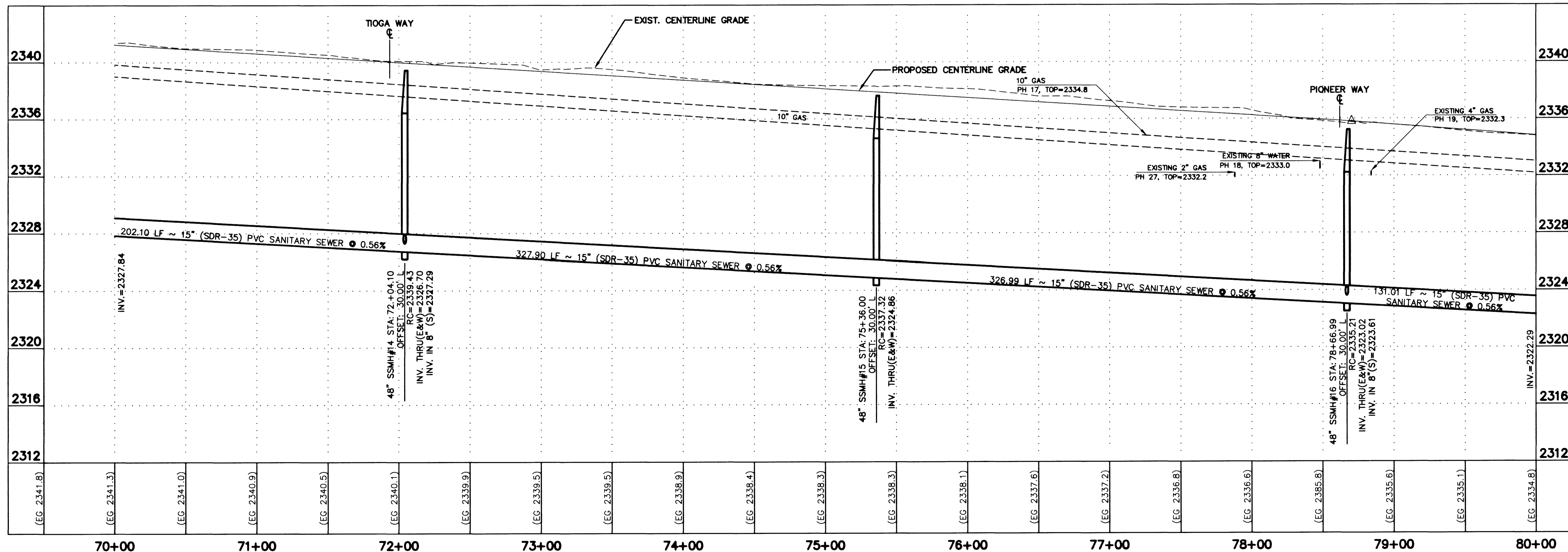
NAVD 88- CLV BENCH 1LV003W4
CLV PIN & PLATE IN TOP OF ELEC. BASE
SOUTH SIDE OF CRAIG RD., 250' +/- EAST
OF BUFFALO DR.
ELEVATION 714.730 METERS, 2344.91 FEET



Bonnie Cift
LAS VEGAS VALLEY WATER DISTRICT

2-28-00
DATE

NOTE:
FOR STORM DRAIN LATERAL CROSSINGS SEE STORM DRAIN SECTION SHEET SD-13



Call before you Overhead
1-702-593-6111
HIGH VOLTAGE ENGINEERING & SAFETY SERVICES CONSULTANT

Call before you Dig
1-800-227-2800
UNDERGROUND SERVICE LOCATOR

SHEET	CITY OF LAS VEGAS 731 SOUTH FOURTH STREET LAS VEGAS, NEVADA 89101	
	URS Greiner 2785 EAST DESERT INN ROAD LAS VEGAS, NEVADA 89121 (702)-796-7775 FAX (702)-796-1803	
TITLE	15' SANITARY SEWER PLAN AND PROFILE STA. 70+00 TO STA. 80+00	
	CRAIG ROAD IMPROVEMENTS BID NO. 00.1730.23	
DRAWN BY:	DMS/MRA	7/20/98
DESIGNED BY:	DMS/MRA	7/20/98
CHECKED BY:	DM	7/20/98
PROJECT NO.:	44300	SCALE: 1"=40' HOR. 1"=4' VERT.
SHEET	SS-6	
34	OF 55 SHEETS	
DRAWING NO.	107-V3048	

28363