

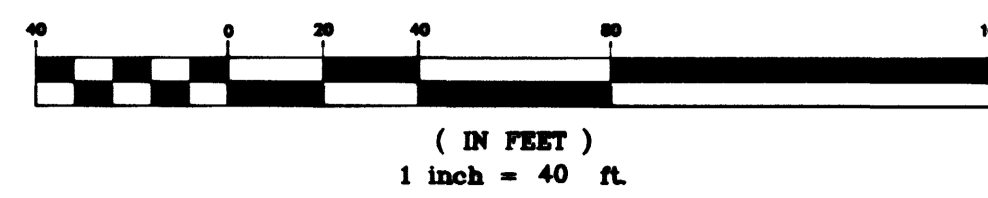
CONSTRUCTION NOTES:

- ① INSTALL 12" SANITARY SEWER LINE
- ② INSTALL 8" SEWER LATERAL PER STD. DWG(S) SD-12, SD-16B & SD-17
- ③ CONSTRUCT 48" SANITARY SEWER MANHOLE PER STD. DWG(S) SD-1, SD-6, & SD-7
- ④ INSTALL 15" SANITARY SEWER LINE
- ⑤ INSTALL 8" WATERLINE
- ⑥ INSTALL 2" BLOW-OFF ASSEMBLY PER UDACS STD. PLATE No. 4
- ⑦ ADJUST MANHOLE RIM PER STD. DWG(S) SD-6 AND SD-3B
- ⑧ ADJUST VALVE BOX PER UDACS STD. PLATE No. 8
- ⑨ INSTALL 12" GATE VALVE
- ⑩ INSTALL 12" x 8" CONCENTRIC REDUCER
- ⑪ INSTALL 12" - 22.50" BEND
- ⑫ INSTALL 12" x 12" x 6" TEE
- ⑬ INSTALL 12" WATERLINE
- ⑭ INSTALL 6" WATERLINE
- ⑮ INSTALL 8" GATE VALVE
- ⑯ INSTALL 6" GATE VALVE
- ⑰ INSTALL 12" x 12" x 8" TAPPING TEE

PIPE TRENCH NOTES:

- 1. IN UNPAVED AREAS INSTALL PIPE PER STD. DETAIL #502
- 2. IN EXISTING AND NEW PAVED AREAS & STREET CROSSING INSTALL PIPE PER STD. DETAIL #504 EXCEPT USE TYPE II AGGREGATE IN AREA 2 FEET BELOW PAVEMENT.
- WATER INSTALLATION NOTES:**
- 1. INSTALL WATERLINE PER. UDACS STD. PLATE NO. 6C
- 2. INSTALL THRUST BLOCKS @ REDUCERS & VALVES PER UDACS STD. PLATE NO. 3
- 3. INSTALL THRUST BLOCKS @ ALL ELBOWS & TEES PER UDACS STD. PLATE NO. 5

GRAPHIC SCALE

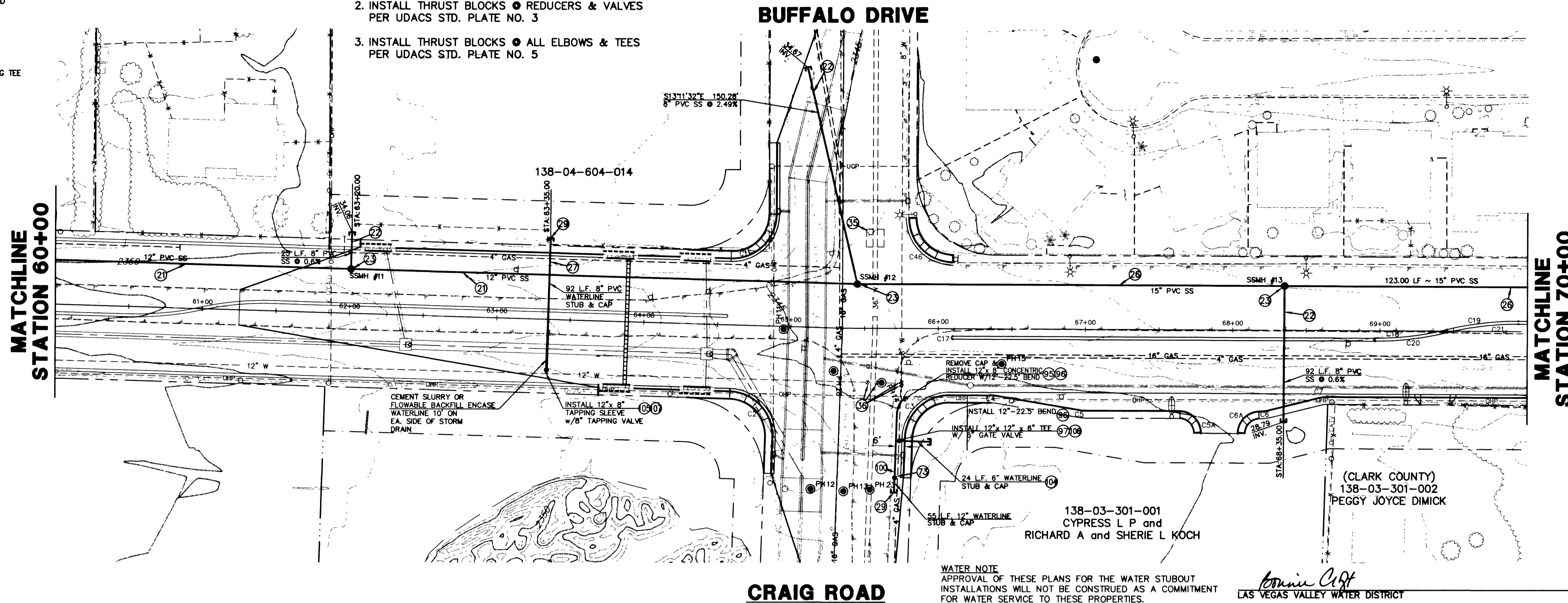


BASIS OF BEARING

NORTH 39°40'38" WEST BEING THE BEARING OF THE LINE FROM POINT 825 TO POINT No. 808 AS SHOWN BY THAT CERTAIN RECORD OF THE SURVEY ON FILE IN THE OFFICE OF THE CLARK COUNTY RECORDER, CLARK COUNTY, NEVADA IN FILE 88, PAGE 53. SAID BEARING BEING BASED ON THE NORTH AMERICAN DATUM OF 1983 (NAD '83), NEVADA STATE PLANE EAST ZONE(2701)

BENCHMARK

NAVD 88- CLV BENCH 1LV003W4
CLV PIN & PLATE IN TOP OF ELEC. BASE
SOUTH SIDE OF CRAIG RD., 250' +/- EAST
OF BUFFALO DR.
ELEVATION 714.730 METERS, 2344.91 FEET

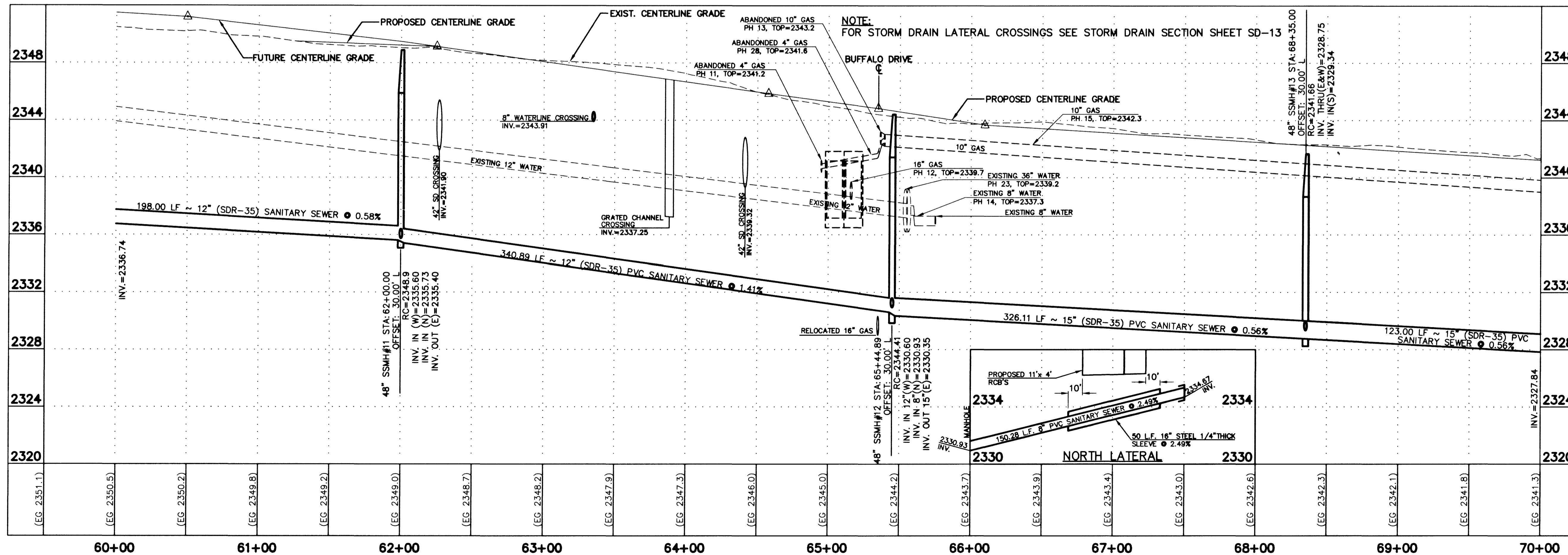


CRAIG ROAD

WATER NOTE
APPROVAL OF THESE PLANS FOR THE WATER STUBOUT INSTALLATIONS WILL NOT BE CONSTRUED AS A COMMITMENT FOR WATER SERVICE TO THESE PROPERTIES.

Eric A. ...
LAS VEGAS VALLEY WATER DISTRICT

2-28-00
DATE



Call before you Overhead
1-702-533-6111
Avoid cutting underground utility lines. It's costly.

Call before you Dig.
1-800-227-2800

CITY OF LAS VEGAS
731 SOUTH FOURTH STREET
LAS VEGAS, NEVADA 89101

URS Greiner
2785 EAST DESERT INN ROAD
LAS VEGAS, NEVADA 89131
(702) 796-7775 FAX (702) 796-1803

CRAIG ROAD
12" & 16" SANITARY SEWER PLAN AND PROFILE
STA. 60+00 TO STA. 70+00
IMPROVEMENTS
BID NO. 00.1730.23

RESIDUAL PROFESSIONAL ENGINEER
DOUG MATHIAS
2/23/2000
No. 7401

SH-5
33 OF 55 SHEETS

DRAWING NO.
107-V3048

28362