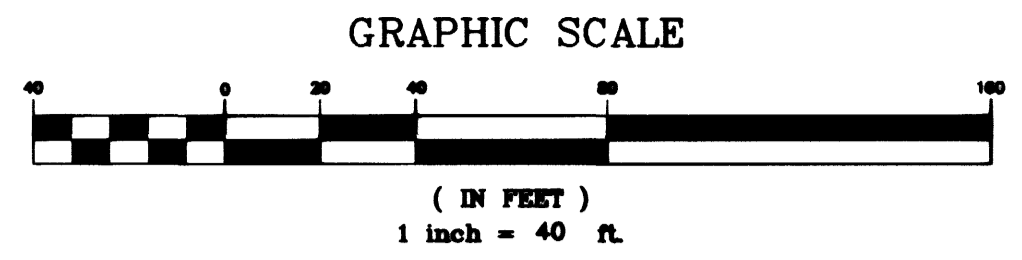


CONSTRUCTION NOTES:

- ① INSTALL 12" SANITARY SEWER LINE
- ② INSTALL 8" SEWER LATERAL PER STD. DWG(S) SD-12, SD-168 & SD-17
- ③ CONSTRUCT 48" SANITARY SEWER MANHOLE PER STD. DWG(S) SD-1, SD-6, & SD-7

PIPE TRENCH NOTES:

- 1. IN UNPAVED AREAS INSTALL PIPE PER STD. DETAIL #502
- 2. IN EXISTING AND NEW PAVED AREAS & STREET CROSSINGS INSTALL PIPE PER STD. DETAIL #504 EXCEPT USE TYPE II AGGREGATE IN AREA 2 FEET BELOW PAVEMENT COMPACTED TO 95%

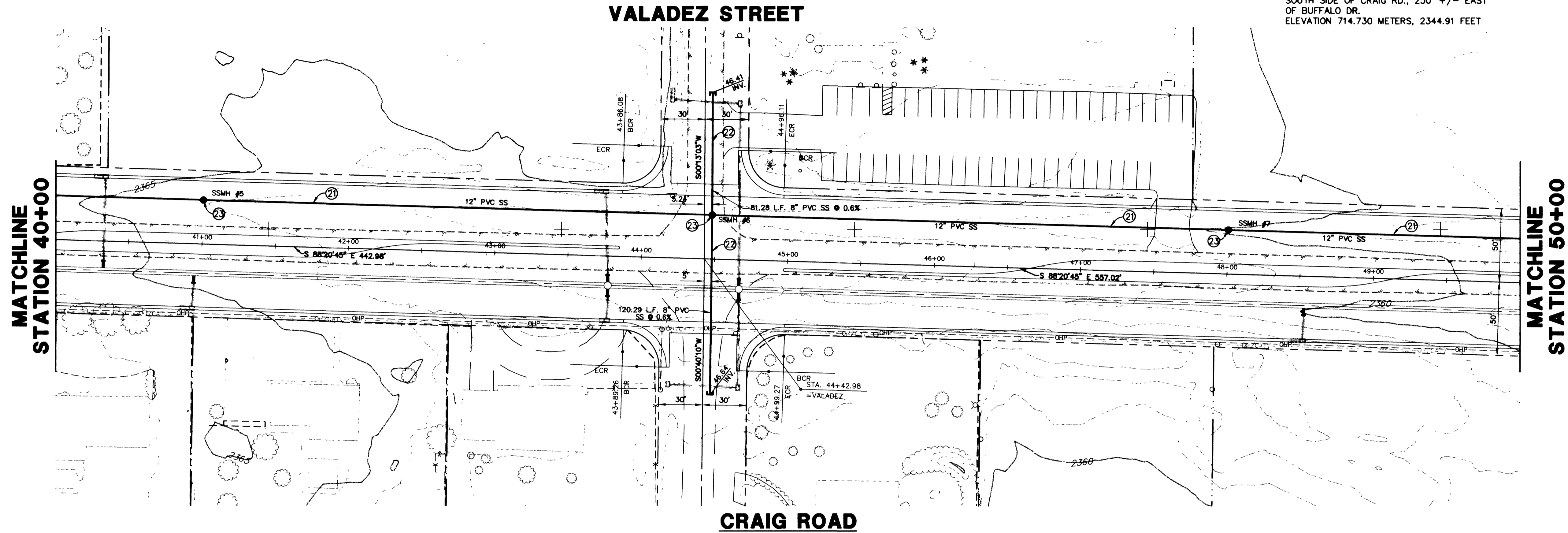


BASIS OF BEARING

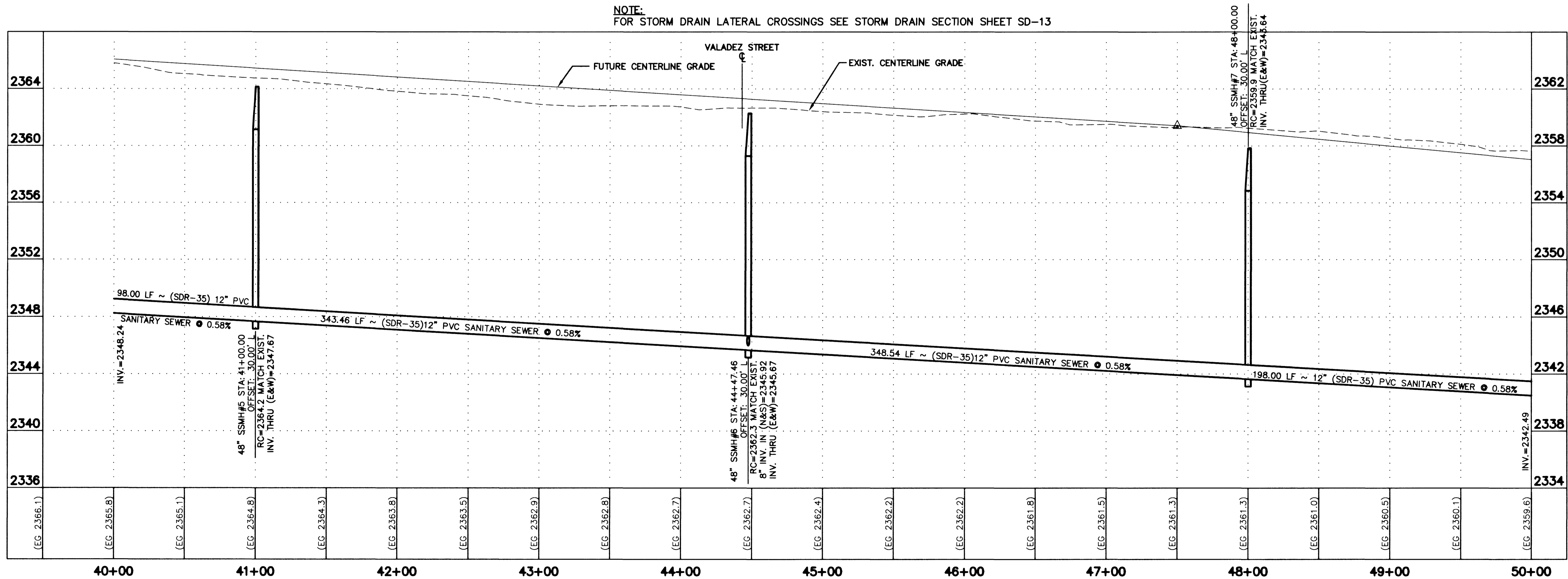
NORTH 39°40'38" WEST BEING THE BEARING OF THE LINE FROM POINT 825 TO POINT No. 808 AS SHOWN BY THAT CERTAIN RECORD OF THE SURVEY ON FILE IN THE OFFICE OF THE CLARK COUNTY RECORDER, CLARK COUNTY, NEVADA IN FILE 88, PAGE 53. SAID BEARING BEING BASED ON THE NORTH AMERICAN DATUM OF 1983 (NAD '83), NEVADA STATE PLANE EAST ZONE(2701)

BENCHMARK

NAVD 88- CLV BENCH 1LV003W4
CLV PIN & PLATE IN TOP OF ELEC. BASE
SOUTH SIDE OF CRAIG RD., 250' +/- EAST
OF BUFFALO DR.
ELEVATION 714.730 METERS, 2344.91 FEET



NOTE:
FOR STORM DRAIN LATERAL CROSSINGS SEE STORM DRAIN SECTION SHEET SD-13

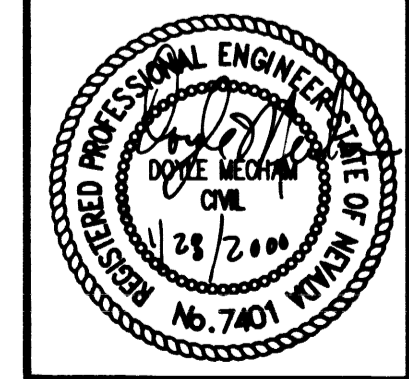


CITY OF LAS VEGAS
731 SOUTH FOURTH STREET
LAS VEGAS, NEVADA 89101

URS Greiner
2785 EAST DESERT INN ROAD
LAS VEGAS, NEVADA 89121
(702)-796-7775 FAX (702)-796-1803

**12' & 15' SANITARY SEWER
PLAN AND PROFILE
STA. 40+00 TO STA. 50+00
CRAIG ROAD
IMPROVEMENTS
BID NO. 00.1730.23**

Drawn by: DMS/MRA 7/20/98
Designed by: DMS/MRA 7/20/98
Checked by: DM 7/20/98
Project No.: 44300
Scale: 1"=40' HOR.
1"=4' VERT.



SHEET
SS-3
OF 55 SHEETS
DRAWING NO.
107-V3048

Call before you Overhead
1-702-583-6111
When you call, we'll send you a copy of our "Call Before You Dig" book.

Call before you Dig
1-800-227-2600
Call before you dig. It's the way to live.

2360