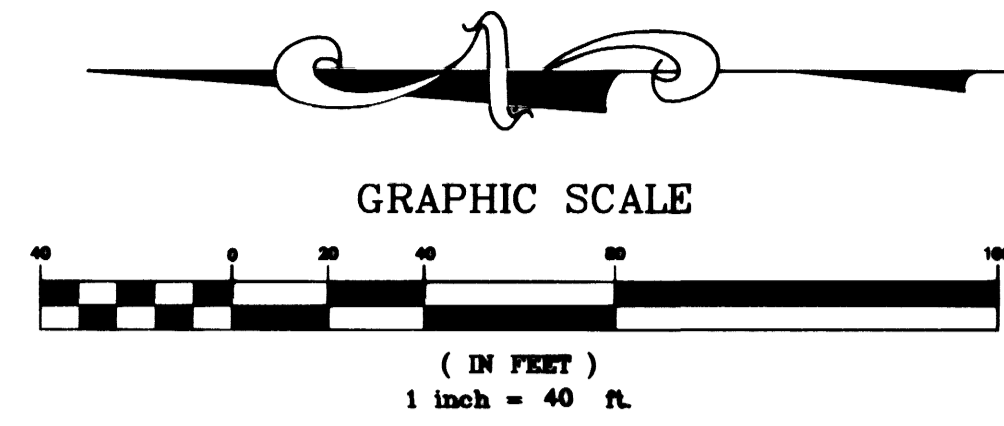


CONSTRUCTION NOTES:

- 15 SAWCUT & MATCH EXISTING PAVEMENT
- 16 RECONSTRUCT PAVEMENT PER SECTION ON SHT. TSS-2
- 23 INSTALL 2" BLOW-OFF ASSEMBLY PER UDACS STD. PLATE No. 4
- 24 INSTALL 12"x 10" ECCENTRIC REDUCER
- 25 INSTALL 12" - 11.25' BEND
- 26 INSTALL 12" PVC AWWA C900 OR APPROVED EQUAL
- 27 INSTALL 12" - CROSS



NOTES:

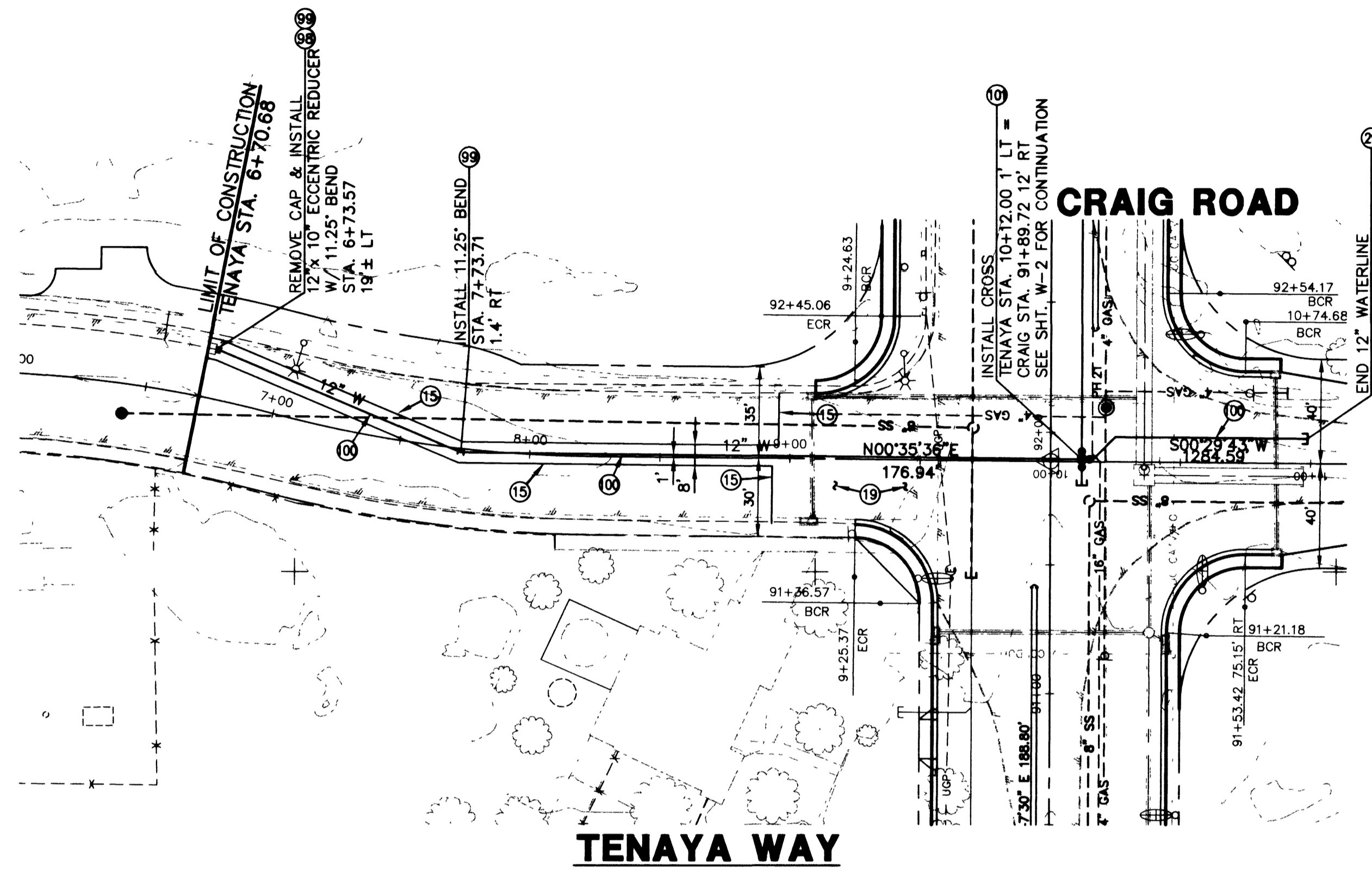
- 1. INSTALL WATERLINE PER. UDACS STD. PLATE NO. 6C
- 2. INSTALL THRUST BLOCKS @ REDUCERS & VALVES PER UDACS STD. PLATE NO. 3
- 3. INSTALL THRUST BLOCKS @ ALL ELBOWS & TEES PER UDACS STD. PLATE NO. 5

BASIS OF BEARING

NORTH 39°40'38" WEST BEING THE BEARING OF THE LINE FROM POINT 825 TO POINT No. 808 AS SHOWN BY THAT CERTAIN RECORD OF THE SURVEY ON FILE IN THE OFFICE OF THE CLARK COUNTY RECORDER, CLARK COUNTY, NEVADA IN FILE 88, PAGE 53. SAID BEARING BEING BASED ON THE NORTH AMERICAN DATUM OF 1983 (NAD '83), NEVADA STATE PLANE EAST ZONE(2701)

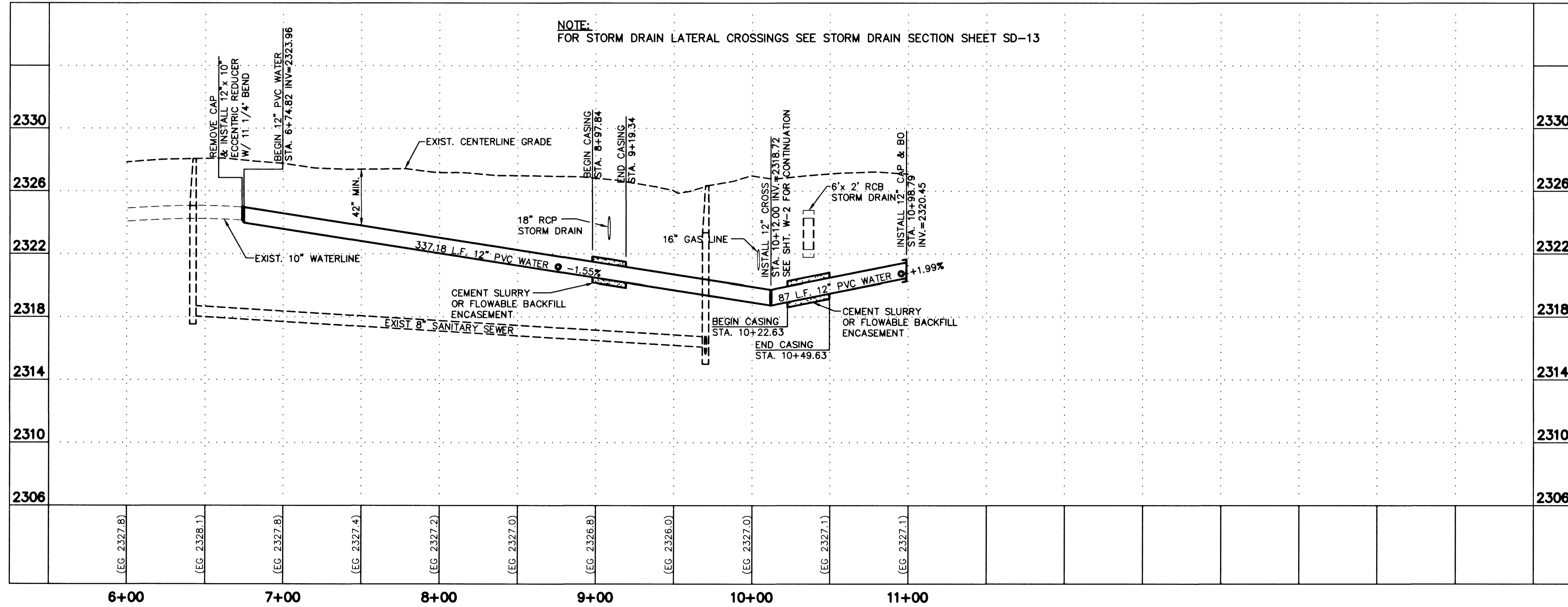
BENCHMARK

NAVD 88- CLV BENCH 1LV003W4
CLV PIN & PLATE IN TOP OF ELEC. BASE
SOUTH SIDE OF CRAIG RD., 250' +/- EAST
OF BUFFALO DR.
ELEVATION 714.730 METERS, 2344.91 FEET



Annex CRT
LAS VEGAS VALLEY WATER DISTRICT

2-28-00
DATE



NOTE:
FOR STORM DRAIN LATERAL CROSSINGS SEE STORM DRAIN SECTION SHEET SD-13

CITY OF LAS VEGAS
731 SOUTH FOURTH STREET
LAS VEGAS, NEVADA 89101

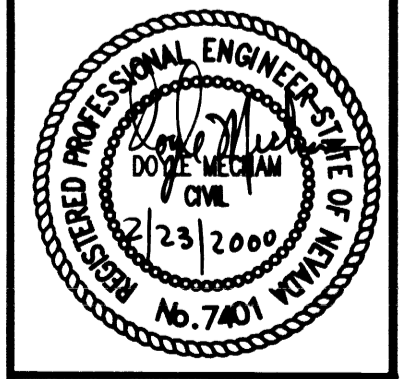
URS Greiner
2785 EAST DESERT INN ROAD
LAS VEGAS, NEVADA 89121
(702)-796-7775 FAX (702)-796-1803

12" WATERLINE
PLAN AND PROFILE
STA. 90+00 TO STA. 99+00
CRAIG ROAD
IMPROVEMENTS
BID NO. 00.1730.23

SHEET	12/23/98
TITLE	12/23/98
DRAWN BY:	DMS/MRA
DESIGNED BY:	DMS/MRA
CHECKED BY:	DM
PROJECT NO:	44300
SCALE:	1"=40' HOR. 1"=4' VERT.

Call before you Overhead

1-702-593-6111
Call before you Dig
1-800-227-2800



SHEET
W-1
27 OF 55 SHEETS
DRAWING NO.
107-V3048

24356