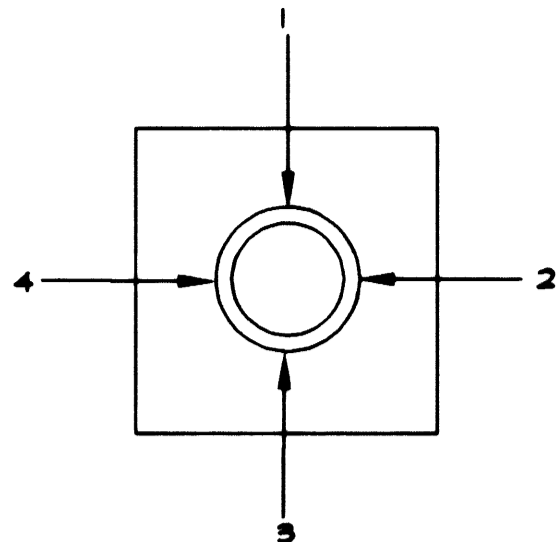


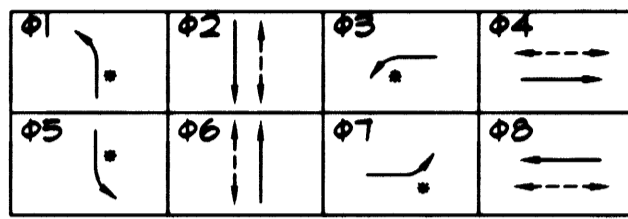
STREET NAME TABLE

POLE	ILLUMINATED STREET NAMES	BLOCK NUMBER
A	CRAIG RD	7200
B	TENAYA WY	4400
C	CRAIG RD	7100
D	TENAYA WY	4500

SEE NOTE 18 AND DETAIL 2 ON SHEET T1



QUADRANT LOCATION



CONFLICT FLASHING SHALL BE ALL RED.

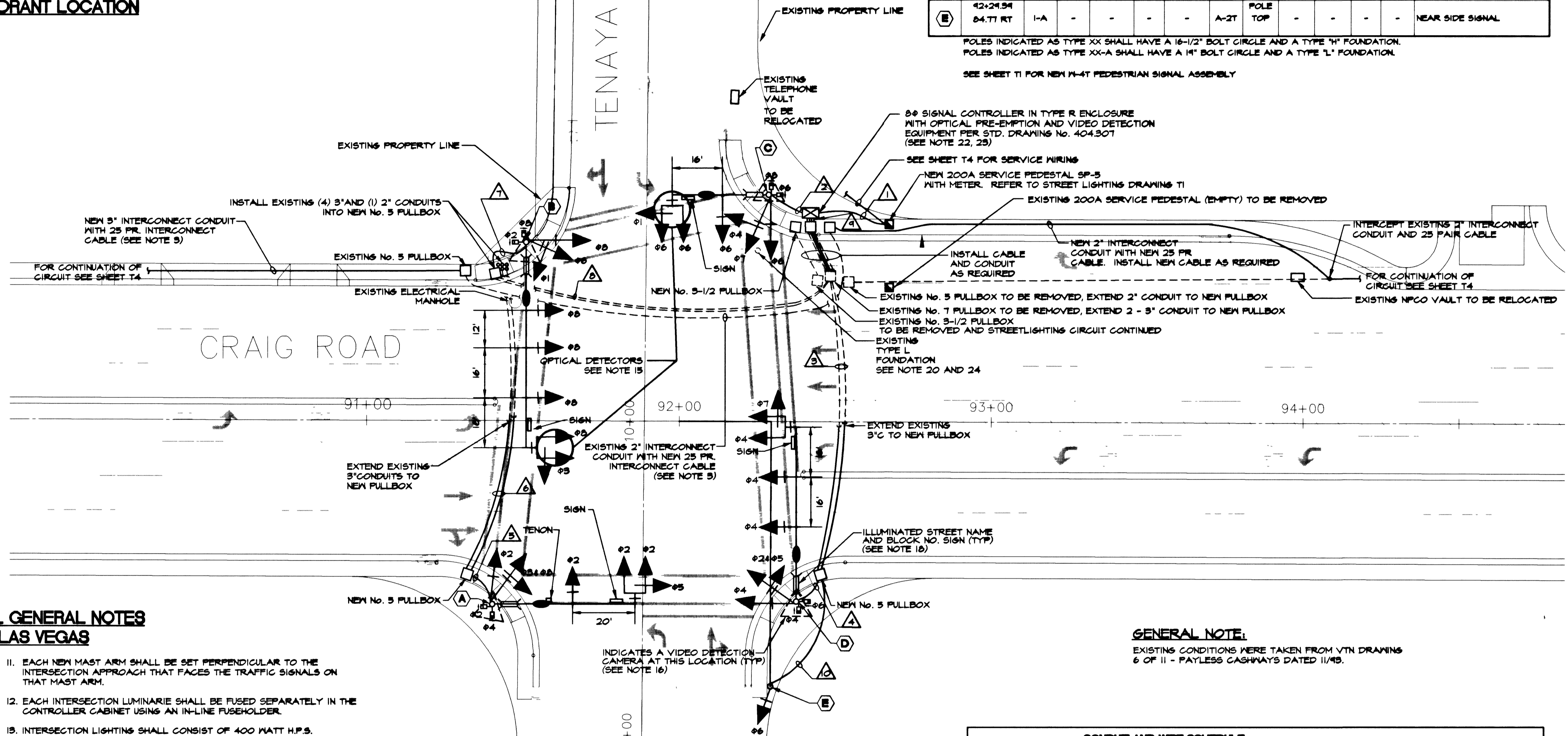
PHASE DIAGRAM

* PROTECTIVE-PERMISSIVE LEFT TURN

POLE SCHEDULE												
POLE	LOCATION STATION	TYPE	SIGNAL ARM		LUMINAIRE ARM		VEHICLE SIGNALS		PEDESTRIAN SIGNALS		REMARKS	
			QUAD	LENGTH	QUAD	LENGTH	QUAD	QUAD	QUAD	QUAD		
A	91+40.17 58.74 RT	XX	2	48'	2	15'	M-2 M-5 B-14T	MA MA 4	M-4T 4	1 2	RT LT	RIO-12 SIGN - #5 & #6 ALL ARROWS (64Y)
B	91+50.62 57.20 LT	XX-A	3	65'	3	15'	(3) M-2 M-5 B-14T	MA MA 1	M-ST 1	2 3	LT RT	RIO-12 SIGN #1 & #3 ALL ARROWS (64Y)
C	92+28.24 72.70 LT	XX-A	4	50'	4	15'	M-2 M-5 B-14T	MA MA 2	M-ST 2	3 4	LT RT	RIO-12 SIGN #1 & #3 ALL ARROWS (64Y)
D	92+97.10 57.56 RT	XX-A	1	55'	1	15'	(2) M-2 M-5 B-14T	MA MA 3	M-ST 3	1 4	RT LT	RIO-12 SIGN #5 & #7 ALL ARROWS (64Y)
E	92+24.54 84.71 RT	I-A	-	-	-	-	A-2T	POLE TOP	-	-	-	NEAR SIDE SIGNAL

POLES INDICATED AS TYPE XX SHALL HAVE A 1 1/2" BOLT CIRCLE AND A TYPE "H" FOUNDATION. POLES INDICATED AS TYPE XX-A SHALL HAVE A 1" BOLT CIRCLE AND A TYPE "L" FOUNDATION.

SEE SHEET T1 FOR NEW M-4T PEDESTRIAN SIGNAL ASSEMBLY



**TRAFFIC SIGNAL GENERAL NOTES
CITY OF LAS VEGAS**

- THE CONTRACTOR SHALL BE RESPONSIBLE FOR DAMAGE TO ALL EXISTING UTILITIES. THE LOCATIONS OF UNDERGROUND UTILITIES, AS SHOWN ON THE PLANS, ARE APPROXIMATE ONLY. IT SHALL BE THE RESPONSIBILITY OF THE CONTRACTOR TO CONTACT THE FOLLOWING UTILITIES TO VERIFY THE EXACT LOCATION AND DEPTH. THE UTILITY SHALL BE NOTIFIED AT LEAST 72 HOURS PRIOR TO COMMENCEMENT OF CONSTRUCTION.
CALL-BEFORE-YOU-DIG 1-800-227-2600
C.L.V. TRAFFIC ENGINEERING 224-6651
& FIELD OPERATIONS 361-5307
NEVADA POWER 361-5307
LVACTS 224-6611
- ALL CABLE AND WIRING SHALL BE INSTALLED FROM TERMINAL TO TERMINAL WITHOUT SPLICES.
- TRAFFIC SIGNAL CABLE SHALL BE 25 CONDUCTOR, #14 AWG CABLE AND SHALL CONFORM TO IMSA SPEC NO. 20-1. ALL SIGNAL DETECTION WILL BE BY VIDEO. INTERCONNECT CABLE SHALL BE 25 PAIR #22 AWG SHIELDED PER REA SPEC. PE-34.
- CAMERA TERMINATIONS SHALL BE WIRED IN THE CONTROLLER CABINET TO THE PROPER PHASES. CAM 1 - POLE A, CAM 2 - POLE D, CAM 3 - POLE C AND CAM 4 - POLE B.
- ALL PULL BOXES SHALL BE PRECAST REINFORCED CONCRETE AND HAVE CAST IRON COVERS MARKED "TRAFFIC SIGNALS" FOR TRAFFIC SIGNAL AND INTERCONNECT WIRING.
- THE ROUTING AND TERMINATION OF CONDUITS AND THE PLACING OF POLES AND CABINETS SHALL BE AS INDICATED ON THE PLANS. ALL CHANGES SHALL BE APPROVED BY THE TRAFFIC ENGINEER.
- ALL SIGNAL POLES SHALL CONFORM TO UNIFORM STANDARD DRAWINGS 404.406 SHEETS 1 THROUGH 6.
- THE FINAL LOCATION OF POLES AND VIDEO DETECTION CAMERAS SHALL BE DETERMINED AT THE TIME OF CONSTRUCTION BY THE TRAFFIC ENGINEER.
- ALL PEDESTRIAN SIGNAL HEADS SHALL BE HAND/MAN SYMBOL. PEDESTRIAN SIGNALS SHALL BE ILLUMINATED BY INCANDESCENT LAMPS.
- ALL PEDESTRIAN PUSH BUTTON SIGNALS SHALL BE #1/2" WITH FULL MOUNTING BRACKET AND ADA COMPATIBLE.
- EACH NEW MAST ARM SHALL BE SET PERPENDICULAR TO THE INTERSECTION APPROACH THAT FACES THE TRAFFIC SIGNALS ON THAT MAST ARM.
- EACH INTERSECTION LUMINAIRE SHALL BE FUSED SEPARATELY IN THE CONTROLLER CABINET USING AN IN-LINE FUSEHOLDER.
- INTERSECTION LIGHTING SHALL CONSIST OF 400 WATT H.P.S. LUMINAIRES WITH ANSI/IES M.C. III DISTRIBUTION, INTEGRAL PHOTOELECTRIC (PE) CONTROL, 120 VOLT MAGNETIC REGULATING BALLAST, AND GLASS LENS WITH CHARCOAL FILTER, G.E. NO. M4AC40S1M26M32 OR APPROVED SUBSTITUTE.
- LUMINAIRE ARMS SHALL PROVIDE FOR 35' MOUNTING HEIGHT.
- OPTICAL DETECTORS SHALL BE MOUNTED ON TOP OF THE 5 SECTION SIGNAL HEADS, AS SHOWN IN THE DRAWINGS. THEY MUST BE COMPATIBLE TO THE OPTICAL DETECTORS ALREADY IN USE IN THE CITY. REFER TO CITY OF LAS VEGAS STANDARD SPECIFICATIONS.
- VIDEO DETECTION EQUIPMENT SHALL BE AS PER CITY OF LAS VEGAS STANDARD SPECIFICATIONS AND MANUFACTURER'S SPECIFICATIONS. FURNISH RG-6, 75 OHM COAXIAL CABLE FOR THE VIDEO SIGNAL AND 3-CONDUCTOR NO. 18 POWER CABLE TO EACH OF FOUR (4) CAMERA LOCATIONS. SEE PROJECT SPECIFICATIONS.
- ALL TRAFFIC SIGNAL HEADS SHALL HAVE 12" DIA. GLASS LENSES, AND LOUVERED BACKPLATES. ALL RED INDICATIONS SHALL BE LED'S.
- BLOCK NO. AND ILLUMINATED DOUBLE-FACED STREET NAME SIGNS SHALL CONFORM TO STANDARD DRAWINGS 404.416 AND 404.417 AND WIRED TO THE LUMINAIRE PHOTOCELL FOR CONTROL. ILLUMINATED PANEL SHALL BE AS SHOWN IN DETAIL 2 ON SHEET T1.
- THE SIGNAL HEAD TENON PLACEMENT SHALL BE VERIFIED BY THE CITY OF LAS VEGAS TRAFFIC ENGINEER PRIOR TO MANUFACTURE OF THE MAST ARMS.
- REPLACE EXISTING NO. 3-1/2 AND NO. 5 PULLBOX COVERS MARKED "STREET LIGHTING" WITH COVERS MARKED "TRAFFIC SIGNAL" WHERE APPLICABLE.
- THE CABINET SHALL INCLUDE AN UNINTERRUPTIBLE POWER SUPPLY SYSTEM (UPS). SEE SUBSECTION 625T.02.14 OF THE SUPPLEMENTAL SPECIFICATIONS.
- SIGNAL CONTROLLER TO BE YEAR 2000 COMPLIANT.
- BREAK DOWN ABANDONED TYPE "L" FOUNDATION 5' BELOW FINISHED GRADE AND BURN OFF ANCHOR BOLTS, CONDUIT REBAR, AND WIRE MESH.

GENERAL NOTE:
EXISTING CONDITIONS WERE TAKEN FROM VTN DRAWINGS 6 OF 11 - PAYLESS CASHWAYS DATED 11/95.

CONDUIT AND WIRE SCHEDULE																		
FROM	TO	VIA CONDUIT																
		1	2	3	4	5	6	7	8	9	10	11	12	13	14			
484 THM 196 6ND	METER PEDESTAL	CONTROLLER																
25 COND.	CONTROLLER	POLE A																
25 COND.	CONTROLLER	POLE B																
25 COND.	CONTROLLER	POLE C																
25 COND.	CONTROLLER	POLE D																
25 COND.	CONTROLLER	POLE A																
25 COND.	CONTROLLER	POLE B																
25 COND.	CONTROLLER	POLE C																
25 COND.	CONTROLLER	POLE D																
PRE-EMPTION CABLE	CONTROLLER	POLE B																
PRE-EMPTION CABLE	CONTROLLER	POLE C																
CAMERA PYR. CABLE	CONTROLLER	POLE A																
CAMERA PYR. CABLE	CONTROLLER	POLE B																
CAMERA PYR. CABLE	CONTROLLER	POLE C																
CAMERA PYR. CABLE	CONTROLLER	POLE D																
CAMERA VIDEO CABLE	CONTROLLER	POLE A																
CAMERA VIDEO CABLE	CONTROLLER	POLE B																
CAMERA VIDEO CABLE	CONTROLLER	POLE C																
CAMERA VIDEO CABLE	CONTROLLER	POLE D																
CONDUIT SIZE			2"	2"	(2)	3"	3"	(2)	3"	3"	3"	2"	(4)3"	2"				

NOTE: INCLUDE IN EACH CONDUIT A #8 GREEN GROUNDING CONDUCTOR.

ELECTRICAL SITE PLAN

SCALE: 1"=20'-0"

REV.	DATE	BY	REVISION

CITY OF LAS VEGAS
731 SOUTH FOURTH STREET
LAS VEGAS, NEVADA 89101

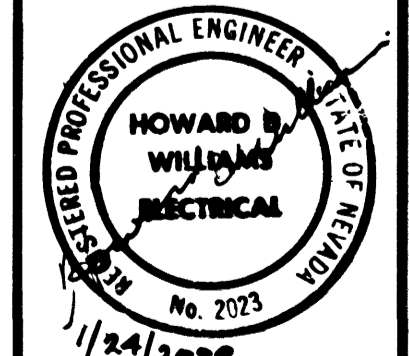
URS GREENER
2785 EAST DESERT INN ROAD
LAS VEGAS, NEVADA 89121
(702)-796-7775

**ELECTRICAL SITE PLAN
TENAYA AND CRAIG ROAD
IMPROVEMENTS**
BID NO. 00.1730.23

SHEET 01/21/00

DRAWN BY: SLP/JCC
DESIGNED BY: HW
CHECKED BY: HW/TJK
PROJECT NO: 8067/SITE7

SCALE: AS SHOWN



SHEET **T6**
26 OF 55 SHEETS
DRAWING NO. 107-V3048

TJKROB CONSULTING ENGINEERS, INC.
7151 CASCADE VALLEY COURT SUITE 200
LAS VEGAS, NEVADA 89128
(702) 871-3621
ELECTRICAL ENGINEERING