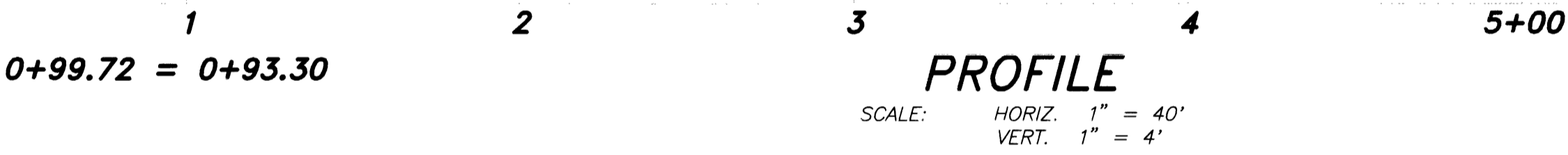


KNUCKLE PROFILE

DESERT GEM CT. BCR PROFILE

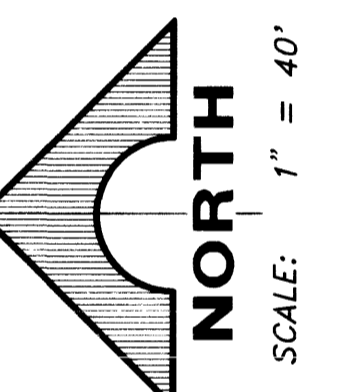
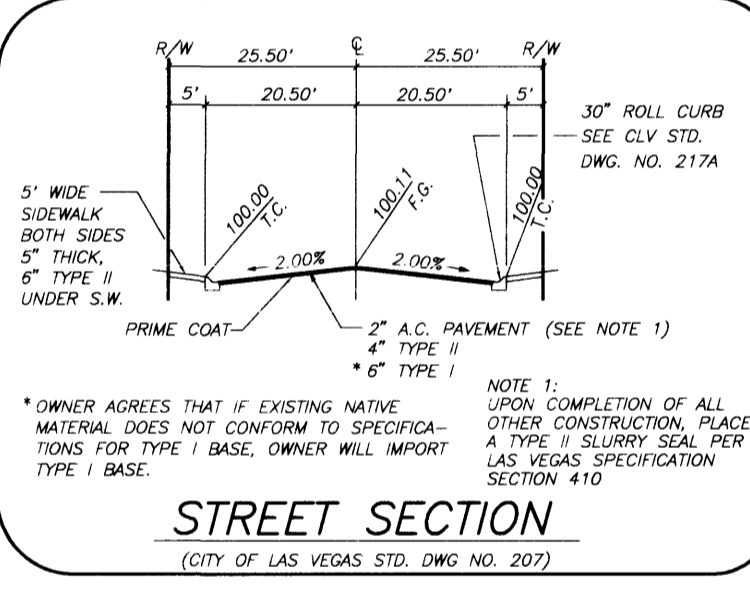


PROFILE

SCALE: HORIZ. 1" = 40'  
VERT. 1" = 4'

**B.C. CURVE TABLE**

CURVE	DELTA	RADIUS	LENGTH	TANGENT
1	04°18'51"	55.00'	4.11'	2.06'
2	51°34'28"	40.50'	36.46'	19.57'
3	02°55'27"	870.50'	44.43'	22.22'
4	04°09'26"	870.50'	63.18'	31.59'
5	44°06'34"	55.00'	42.34'	22.28'
6	38°25'32"	40.50'	27.16'	14.11'
7	180°00'00"	40.50'	127.23'	---
8	06°22'04"	870.50'	96.75'	48.42'
9	1°24'23"	870.50'	267.50'	134.81'
10	86°06'16"	20.00'	30.06'	18.68'
11	21°30'07"	850.00'	318.99'	161.39'
12	4°59'11"	55.00'	42.22'	22.21'
13	96°36'46"	55.00'	93.58'	62.51'
14	05°01'59"	829.50'	72.87'	36.46'
15	81°51'57"	850.00'	1214.50'	737.15'
16	00°10'36"	829.50'	2.56'	1.28'
17	96°36'46"	35.00'	59.02'	39.29'
18	27°34'28"	55.00'	26.47'	13.50'
19	119°57'04"	55.00'	115.14'	95.17'
20	81°51'57"	829.50'	1185.21'	719.37'
21	23°20'18"	55.00'	22.40'	11.36'
22	06°20'07"	870.50'	96.25'	48.18'
23	184°37'09"	850.00'	227.30'	140.10'
24	12°13'35"	870.50'	185.76'	93.23'



TOPAZ VALLEY AVENUE

AZURE RIDGE DRIVE

DESERT GEM COURT

**MH COORDINATES**

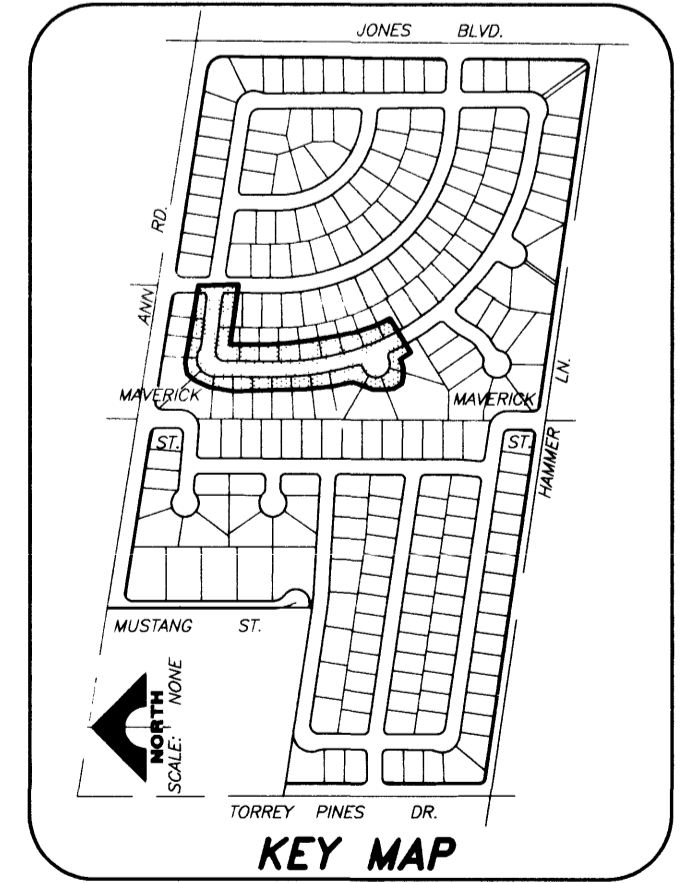
MH #	NORTH	EAST
5	3,940.349	4,185.850
17	4,409.723	3,983.414
18	4,380.606	3,908.901
19	4,728.897	3,921.766
20	4,971.623	3,922.435

**SEWER LINE TABLE**

LINE	BEARING	DISTANCE
18	S 66°39'22" W	80.00'
19	S 00°09'29" W	242.73'
21	N 8°13'45" W	265.26'

**SEWER CURVE TABLE**

CURVE	DELTA	RADIUS	LENGTH	TANGENT
1	22°10'48"	845.00'	327.11'	165.63'
2	18°37'55"	845.00'	274.78'	138.62'
3	81°51'57"	845.00'	1207.36'	732.81'



NOTE:  
SEE SHEET 10 FOR SIDEWALK  
RAMP TRANSITION LENGTHS.

RECOMMENDED BY: SONNY W. NEIGHBOR  
REGISTERED PROFESSIONAL ENGINEER  
NO. 10118  
P.E. NO. DATE

10118 5-5-94

DEL WEBB OF NEVADA, INC.  
COPPER CREST  
TOPAZ VALLEY AVE., DESERT GEM CT.  
AZURE RIDGE DR.

G. C. WALLACE, INC.  
Engineering/Architecture  
1555 SOUTH RAINBOW BLVD./LAS VEGAS, NEVADA 89102

SHEET  
17  
OF 40 SHEETS

JOB NO. 770.006  
PLOTTED: 05/04/94 08:44 am DRAWING: C:\ENGINEER\CC-17.PK CAMP

16-12-17 107Y-4320