

PLANNERS SURVEYORS
POGEMEYER DESIGN GROUP
 ENGINEERS
 2601 NORTH TENAYA WAY LAS VEGAS, NEVADA 89128 (702) 255-8100

a division of
 Poggemeyer
 Design Group, Inc.
 2601 N. Tenaya Way
 Las Vegas, Nevada
 89128
 (702) 255-1000

ARCHITECTS
SOUTHWICK
 and associates

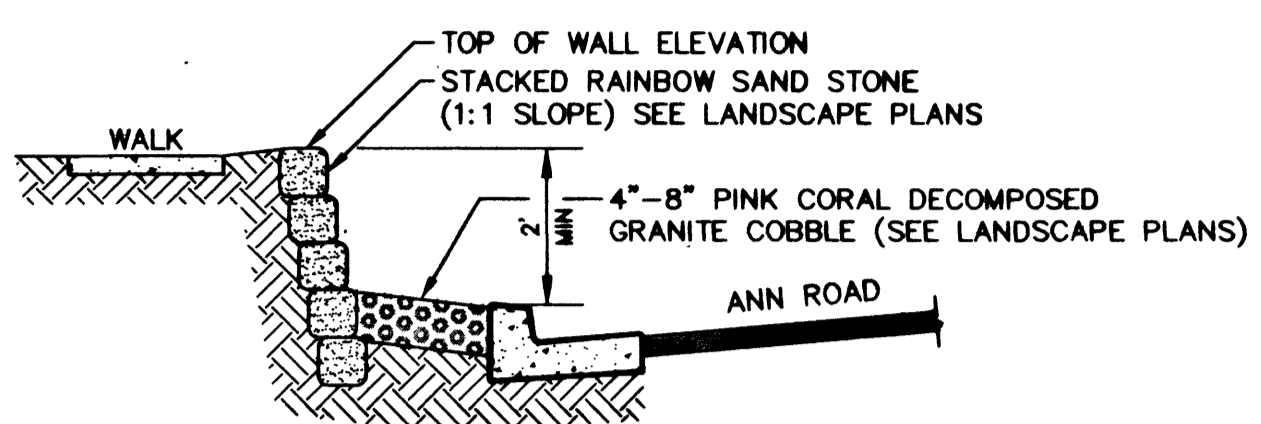
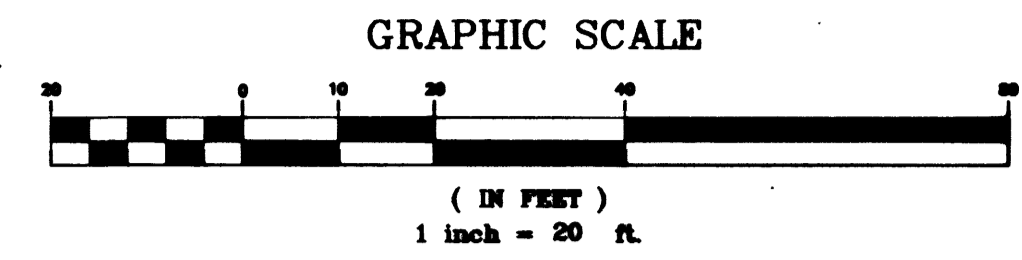
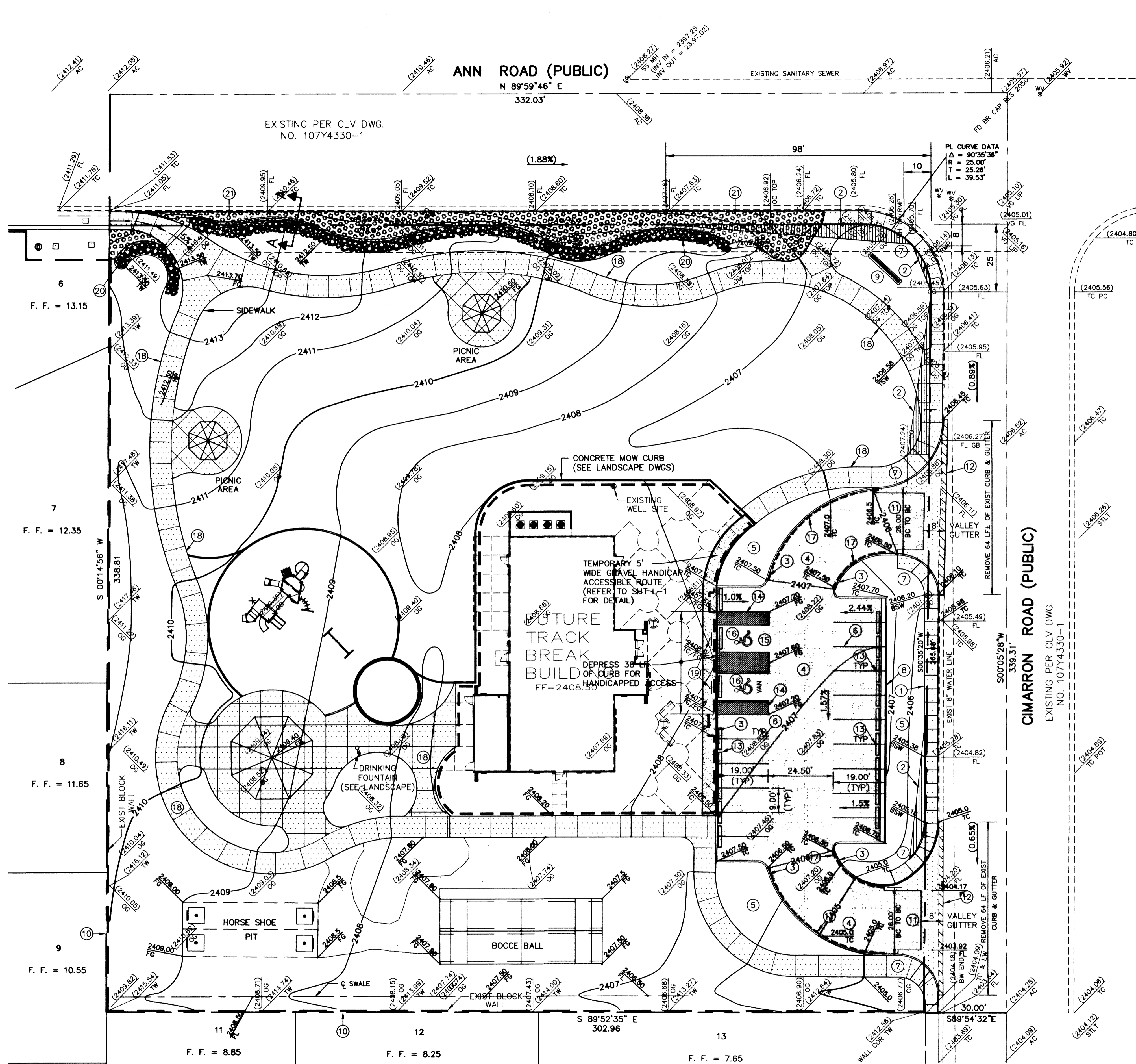
ANN-CIMARRON
 CITY OF LAS VEGAS
 ANN-CIMARRON PARK
 LAS VEGAS, NEVADA

SITE/GRADING PLAN

DWG NO. 1003006
 DATE: 02.17.99
 CHECKED BY: BLW
 PROJECT NO: 1003006

C-2-4

DWG. NO. 000.43



SECTION A-A
 NO SCALE

SITE KEYNOTES

- 1 CONSTRUCT SIDEWALK IN ACCORDANCE WITH CLARK COUNTY AREA STD DWG NO. 234
- 2 SIGHT VISIBILITY RESTRICTION EASEMENT PER CLV STD DWG 404.1600
- 3 CONSTRUCT "A" TYPE CURB IN ACCORDANCE WITH CLARK COUNTY AREA STD DWG NO. 219
- 4 2" AC PAVEMENT, SEE DETAIL (1/C-5)
- 5 REFER TO LANDSCAPE PLAN FOR DETAILS IN THIS AREA
- 6 4" WIDE STRIPING (WHITE)
- 7 CONSTRUCT SIDEWALK RAMPS IN ACCORDANCE WITH CLARK COUNTY AREA STD DWG NO.235 (CASE III)
- 8 CONSTRUCT "L" TYPE CURB AND GUTTER IN ACCORDANCE WITH CLARK COUNTY AREA STD DWG NO. 216
- 9 SIGN MONUMENT - BY OTHERS
- 10 EXISTING BLOCK WALL TO REMAIN
- 11 CONSTRUCT DRIVEWAY IN ACCORDANCE WITH CLARK COUNTY AREA STD DWG NO. 225
- 12 CONSTRUCT 8' CROSS GUTTER IN ACCORDANCE WITH CLARK COUNTY AREA STD DWG NO. 228
- 13 CONSTRUCT CONCRETE BUMPER BLOCK IN ACCORDANCE WITH CLARK COUNTY AREA STD DWG NO. 238
- 14 PAINT ASPHALT WITH 4" WIDE PAINT AT 4" O.C. WHERE INDICATED
- 15 PAINT ASPHALT WITH WHITE INTERNATIONAL SYMBOL OF ACCESSIBILITY IN ACCORDANCE WITH THE AMERICAN DISABILITIES ACT STANDARDS SEE DETAIL (2/C-5)
- 16 PAINT CURB BLUE WITH INDUSTRIAL GRADE ENAMEL IN FRONT OF ALL HANDICAP ACCESSIBLE SPACES
- 17 PAINT CURBS WITH INDUSTRIAL GRADE ENAMEL (SAFETY RED) WHERE INDICATED IN ACCORDANCE WITH CITY OF LAS VEGAS FIRE DEPARTMENT GUIDELINES
- 18 SEE LANDSCAPE PLANS FOR SIDEWALK DETAIL (B/L-4)
- 19 INSTALL HANDICAP SIGN PER LOCAL CODES AND DETAIL (4/C-5)
- 20 ROCK BERM (SEE SECTION A-A, THIS SHEET)
- 21 4"-8" PINK CORAL DECOMPOSED GRANITE COBBLE (SEE LANDSCAPE PLANS)

BASIS OF BEARING

BEING THE EAST LINE OF THE NORTHWEST QUARTER (NW 1/4) OF SECTION 33, TOWNSHIP 21 SOUTH, RANGE 62 EAST, M.D.M., CLARK COUNTY, NEVADA. TAKEN AS SOUTH 00°05'28" WEST AS SHOWN ON A MAP ON FILE 59, PAGE 17 OF PLATS RECORDED IN CLARK COUNTY OFFICIAL RECORDS.

BASIS OF ELEVATION

CITY OF LAS VEGAS BENCHMARK 1LV9033N4, RIVET AND PLATE IN TOP OF THE CURB SEE RETURN ANN ROAD AND CIMARRON ROAD. ELEVATION = 2405.136 (NAVDBB)

NOTE:

1. CONTRACTOR IS RESPONSIBLE TO FIELD VERIFY THE LOCATION OF ALL EXISTING CURB AND GUTTER AND THE REQUIRED RIGHT-OF-WAY OF ALL STREETS EITHER PRIVATE OR PUBLIC. NOTIFY ENGINEER OF ANY DISCREPANCIES.
2. SEE LANDSCAPE PLANS FOR SIDEWALK SCORING

LEGEND

TC	TOP OF CURB		DENOTES SIGHT VISIBILITY RESTRICTION EASEMENT
FG	FINISH GRADE		DENOTES DEMOLITION AREAS
OG	ORIGINAL GRADE		DENOTES NEW AC SURFACE
TW	TOP OF WALL		DENOTES NEW CONCRETE SURFACE
HP	HIGH POINT		DENOTES GRAVEL WALKWAY
FL	FLOW LINE		DENOTES 4"-8" PINK CORAL DECOMPOSED GRANITE COBBLE
(XXXX.XX)	EXISTING ELEVATION		

HANDICAP ACCESSIBILITY NOTE

ALL ON-SITE WALKWAYS ARE DESIGNED TO BE HANDICAP ACCESSIBLE WITH NO SLOPE GREATER THAN 5% AND ALL CROSS SLOPES AT 2%.



Call before you Dig.
 1-800-227-2600

26888

02.17.99
 1003006.CIVIL\G288-000.DWG