

SEE SECTION 1/3S-3 FOR CONC STAIR LANDING. LANDING TO EXTEND 4'-0" BEYOND END OF STAIRS AND 12" WIDER THAN STAIRS EF. CONTR TO COORDINATE MFR SHOP DWG'S FOR STAIR DIMENSIONS AND 12" CONC PAD

STAIR MFR TO PROVIDE 12" TREADS W/1" OVERLAP ON TREADS WITH EQUAL RISERS OF 6 1/2" MAXIMUM HEIGHT. RAILING AT TOP OF STAIRS SHALL HAVE AN EXPANSION JOINT

BRIDGE WITH GRATING AND SAFETY RAILING AND STAIRS TO GRADE SEE MFR SHOP DWGS

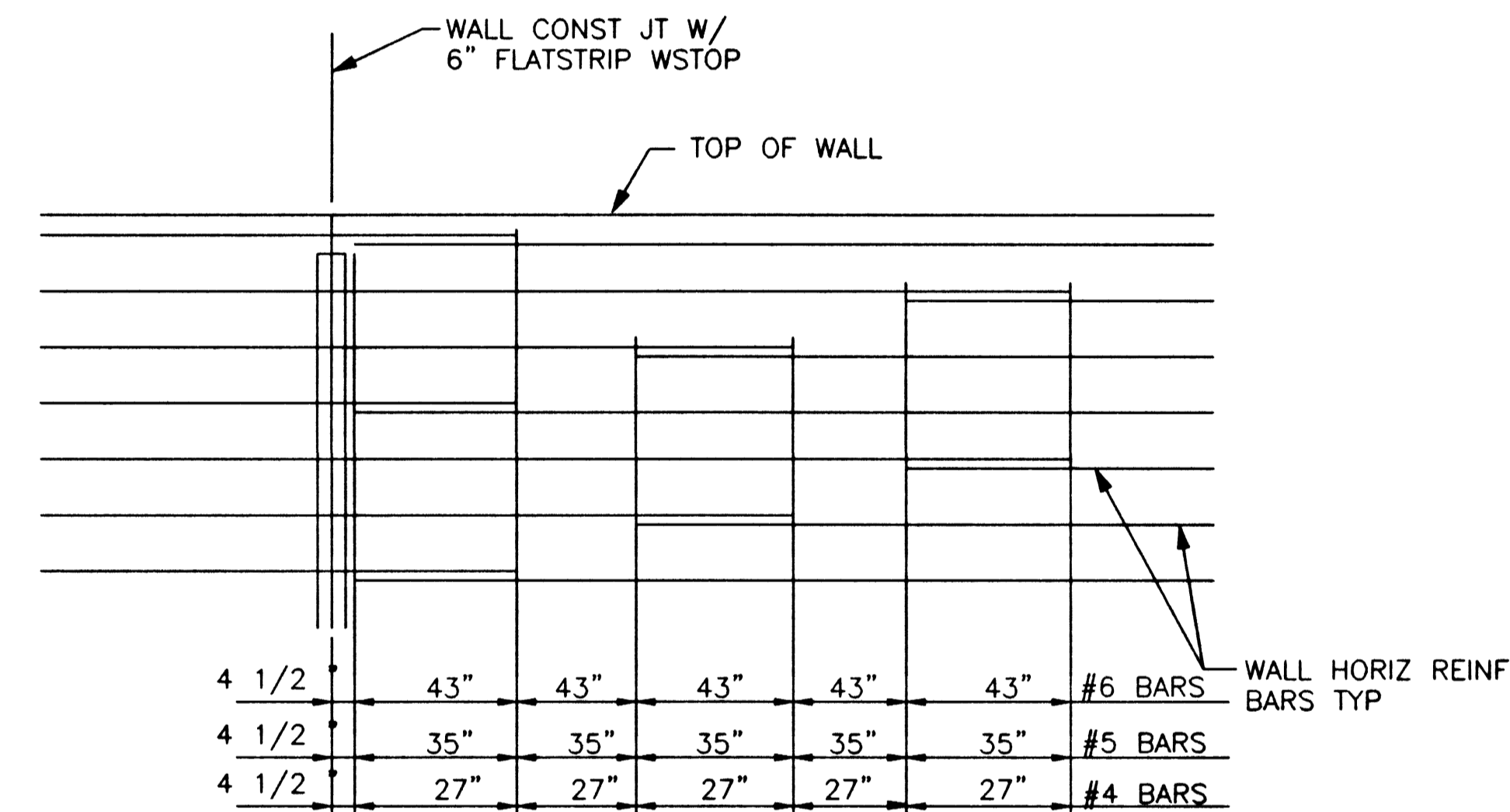
LP OF GROUT TOPPING EL 1807.67, SLOPED UNIFORMLY EW FROM HP AT OPPOSITE SIDE OF CLARIFIER

DIFFUSION AND FLOCCULATION WELLS SEE MFR & MECHANICAL 3M-2

HP OF GROUT TOPPING EL 1808.25, SLOPED UNIFORMLY EW TO OUTLET ON OPPOSITE SIDE OF CLARIFIER

NOTES:

1. SEE DWG 3S-2 FOR TANK WALL HORIZONTAL REINF LAP DETAIL.
2. FOR EXACT LOCATION AND ORIENTATION OF PIPES, SEE MECH'L DWGS
3. COORDINATE ALL FINISHED GRADE ELEVATIONS WITH CIVIL DWGS



TYPICAL HORIZONTAL REINF LAP FOR CLARIFIER WALL  
NOT TO SCALE

TOP PLAN

DATE/TIME DD-MMM-YYYY HH:MM

FILE No. p:\proj\wwrf\str\bzrm0's\*.dgn

JOB No.

REV	DATE	BY	DESCRIPTION

SCALE: 3/16" = 1'-0"  
WARNING: IF THIS BAR DOES NOT MEASURE 1" THEN DRAWING IS NOT TO SCALE.

DESIGNED L. FAIRBANKS  
DRAWN L. FAIRBANKS  
CHECKED C. LEE

SUBMITTED THE ORIGINAL CONTRACT DOCUMENT WAS SIGNED BY SAM MOUAWAD  
PROJECT ENGINEER R. C. E. NO. DATE  
RECOMMENDED THE ORIGINAL CONTRACT DOCUMENT WAS SIGNED BY VICKI J SCHARNHORST  
MONTGOMERY WATSON R. C. E. NO. DATE

**MONTGOMERY WATSON**  
Las Vegas, Nevada

MONTGOMERY WATSON  
3014 WEST CHARLESTON BLVD  
LAS VEGAS, NV 89102-1944  
(702) 878-8010  
COPYRIGHT © 1996 BY MONTGOMERY WATSON  
ALL RIGHTS RESERVED

CITY OF LAS VEGAS  
BONANZA/MOJAVE WATER RESOURCE CENTER  
SECONDARY CLARIFIER  
TOP PLAN

AS BUILT  
DATE  
10 APR 99

DWG. 58  
3S-2  
513-64

THE ORIGINAL CONTRACT DOCUMENT WAS SEALED AND SIGNED BY SAM MOUAWAD

2699