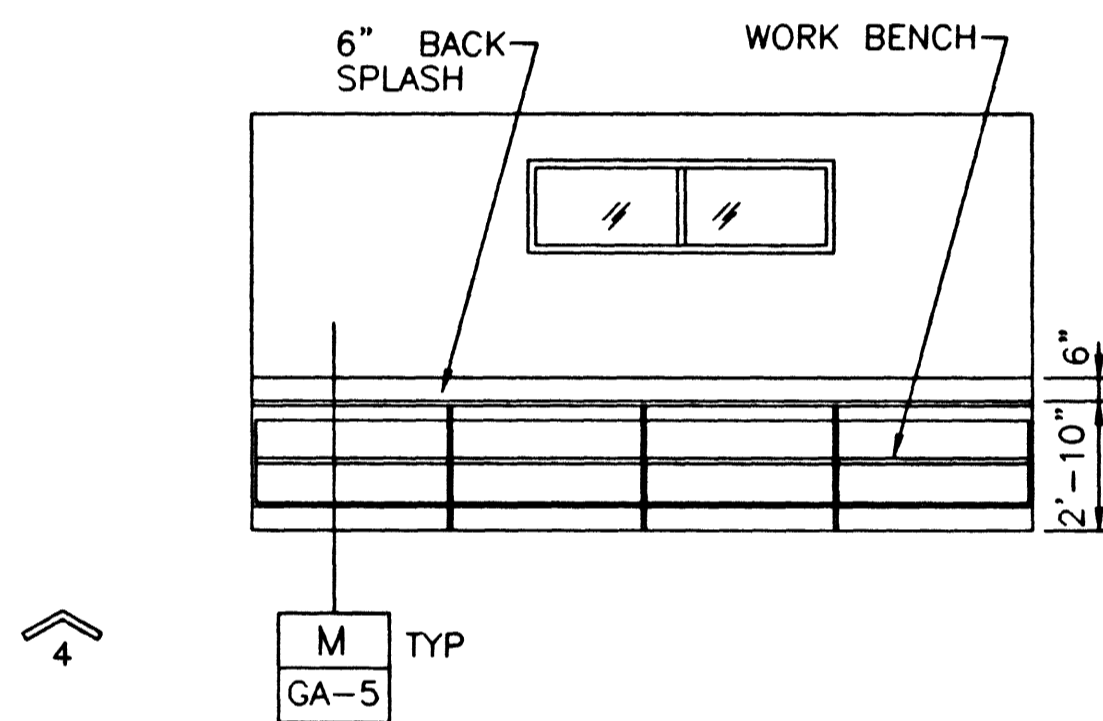


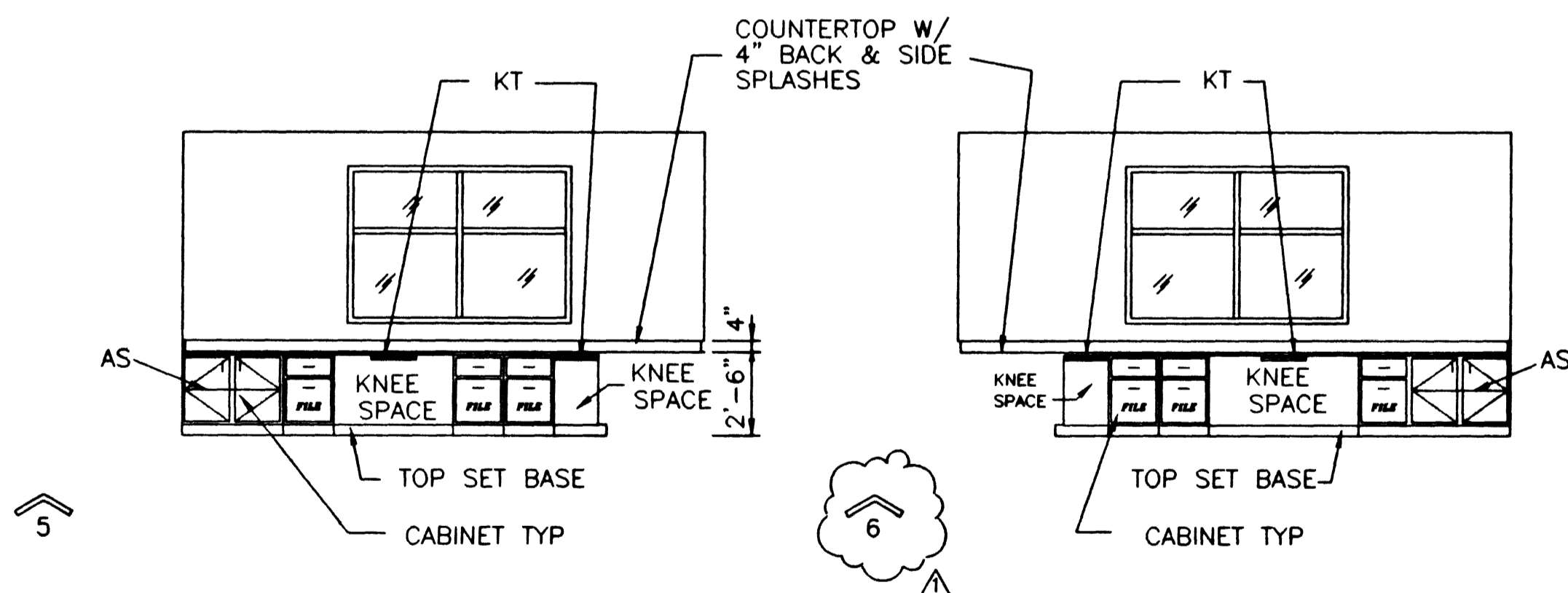
SAMPLE PREP AREA

805



WORK ROOM

809



CONTROL ROOM

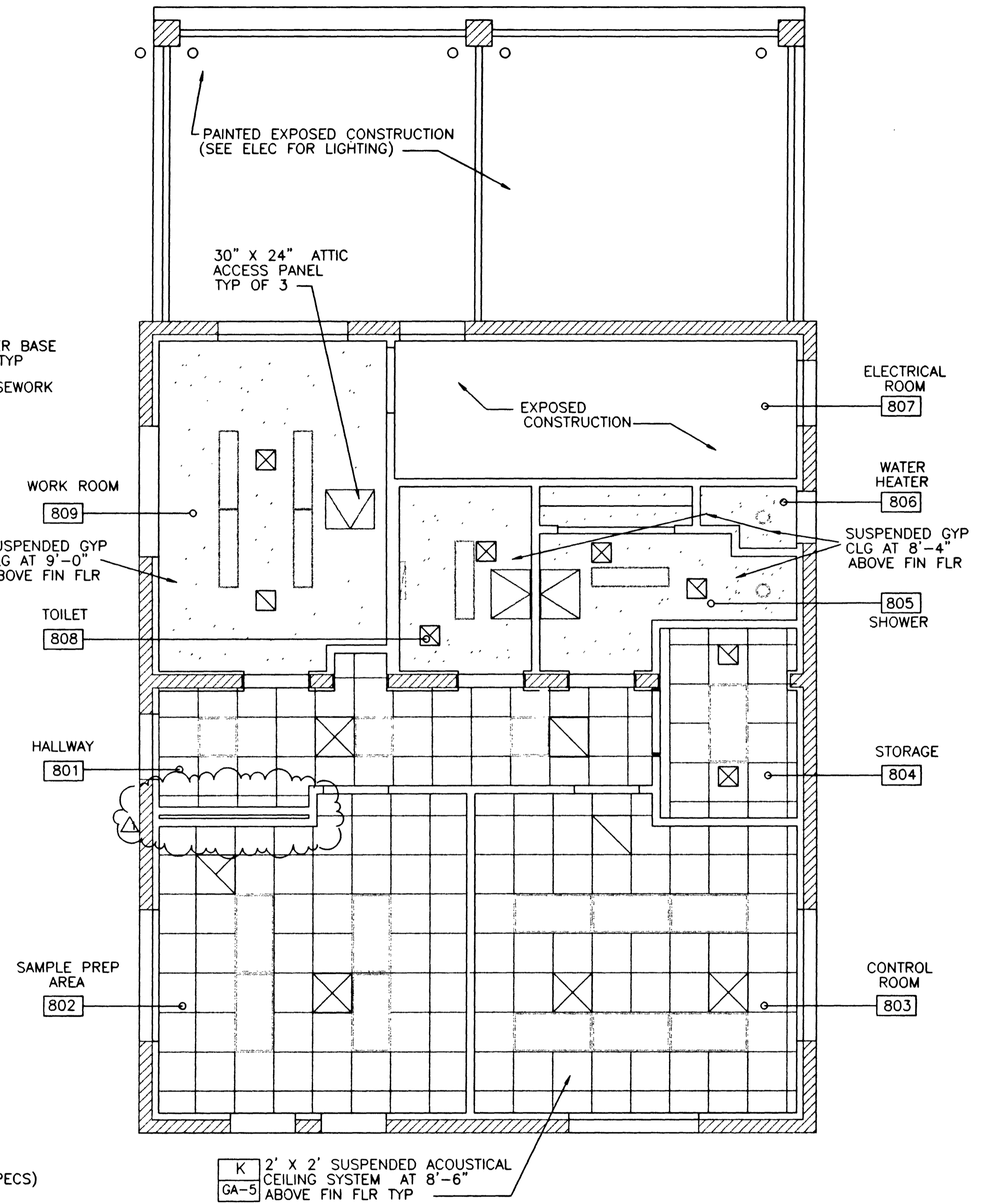
803

LEGEND

- ☒ SUPPLY AIR DIFFUSER
- ☒ EXHAUST GRILLE
- ▭ 2' X 4' RECESSED FLUORESCENT LIGHT FIXTURE
- ◻ 2' X 2' RECESSED FLUORESCENT LIGHT FIXTURE
- ▭ 1' X 4' RECESSED MOUNTED FLUORESCENT LIGHT FIXTURE
- ROUND INCANDESCENT LIGHT FIXTURE
- WALL MOUNTED FLUORESCENT LIGHT FIXTURE CENTERED ABOVE MIRROR
- KT PULL-OUT KEYBOARD TRAY CENTERED IN KNEE SPACE
- AS ADJUSTABLE SHELF
- GW UNDERCOUNTER GLASS WASHER (SEE SPECS)

NOTE:

SEE ELEC SHEET 8E-2 FOR ILLUMINATED EXIT SIGNS



REFLECTED CEILING PLAN

	AS BUILT
	DATE
	10 APR 99

THE ORIGINAL CONTRACT DOCUMENT WAS SEALED AND SIGNED BY WILLIAM H. BRUMM

DATE/TIME dd-mm-yy hh:mm FILE No. SK4-CPR-012

SCALE:	1/4" = 1'-0"
WARNING	IF THIS BAR DOES NOT MEASURE 1" THEN DRAWING IS NOT TO SCALE.
DESIGNED	A. ELHADARY
DRAWN	P. WANG
CHECKED	W. BRUMM

SUBMITTED	THE ORIGINAL CONTRACT DOCUMENT WAS SIGNED BY SATISH KAMATH
PROJECT ENGINEER	R. C. E. NO. DATE
RECOMMENDED	THE ORIGINAL CONTRACT DOCUMENT WAS SIGNED BY WILLIAM H. BRUMM
MONTGOMERY WATSON	R. C. E. NO. DATE

MONTGOMERY WATSON
 Las Vegas, Nevada

MONTGOMERY WATSON
 3014 WEST CHARLESTON BLVD
 LAS VEGAS, NV. 89102-1944
 (702) 878-8010
 COPYRIGHT © 1996 BY MONTGOMERY WATSON
 ALL RIGHTS RESERVED

CITY OF LAS VEGAS
 BONANZA/MOJAVE WATER RESOURCE CENTER
 CONTROL BUILDING
 REFLECTED CEILING PLAN AND INTERIOR ELEVATIONS

DWG. 36
 8A-3
 513-64

26240