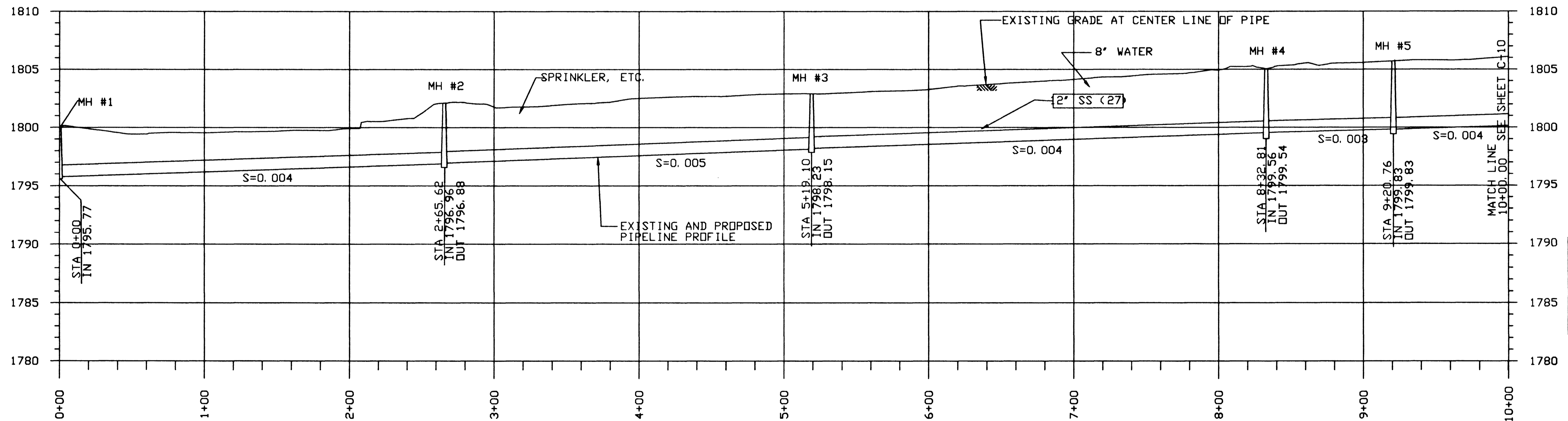


**GENERAL NOTES**

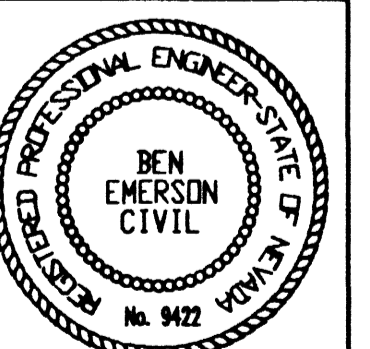
1. ALL STATIONING IS ALONG THE HORIZONTAL CENTERLINE OF THE NEW PIPELINE.
2. ALL PIPELINE ELEVATIONS ARE INVERT ELEVATIONS UNLESS SHOWN OTHERWISE.
3. PIPELINE SLOPES ARE CALCULATED FROM MANHOLE CENTERLINE. MANHOLE CHANNEL INVERTS SHALL BE TRANSITIONED TO MATCH.
4. UTILITY INVERTS SHOWN HAVE BEEN CALCULATED FROM CLOSEST MANHOLE AND SHALL BE VERIFIED BEFORE CONSTRUCTION.

**SHEET NOTES**

5. ALL UNDERGROUND UTILITIES SHALL BE SUPPORTED IN ACCORDANCE WITH DETAIL C229/GC-3
- ① CONTRACTOR SHALL KEEP EXISTING 8-INCH SANITARY SEWER AND ALL LATERALS AS WELL AS FREEDOM PARK IRRIGATION SYSTEM IN SERVICE DURING REPLACEMENT WITH 12-INCH SANITARY SEWER
- ② CONTRACTOR SHALL REPLACE ALL EXISTING MANHOLES WITH NEW MANHOLES PER STANDARD DRAWING SD-1 (STANDARD ECCENTRIC MANHOLE)
- ③ PROVIDE INNER MANHOLE LID SOUTHWESTERN PACKING "RAINSTOPPER" INSERT OR EQUAL (TYPICAL MH NO. 2 THROUGH MH NO. 6 MANHOLES IN PARK)



**AS BUILT**  
DATE  
▲ 9 APR 99  
▲



DATE/TIME\$\$\$\$\$date\$\$\$\$\$time\$\$\$\$\$

JOB No. 1540\_0131 FILE No. \$\$\$\$\$\$directory/filename\$\$\$\$\$

SCALE:	WARNING
HORZ 1"=40'	0 1/2 1
VERT. 1"=5'	IF THIS BAR DOES NOT MEASURE 1" THEN DRAWING IS NOT TO SCALE.
REV. DATE BY	DESCRIPTION
6/00 FAD	REVISED LOCATION MANHOLE

DESIGNED: McCLELLAND	SUBMITTED THE ORIGINAL CONTRACT DOCUMENT WAS SIGNED BY BEN EMERSON
DRAWN: McCLELLAND	PROJECT ENGINEER R. C. E. NO. DATE
CHECKED: B. EMERSON	RECOMMENDED
	THE ORIGINAL CONTRACT DOCUMENT WAS SIGNED BY VICKI J. SCARNHORST
	MONTGOMERY WATSON R. C. E. NO. DATE

MONTGOMERY WATSON	3014 WEST CHARLESTON BLVD LAS VEGAS, NV. 89102-1944 (702) 878-8010
CITY OF LAS VEGAS BONANZA/MOJAVE WATER RESOURCE CENTER	
FREEDOM PARK SEWER OUTFALL STA 0+00 TO STA 10+00	

**MONTGOMERY WATSON**  
Las Vegas, Nevada

COPYRIGHT © 1996 BY MONTGOMERY WATSON  
ALL RIGHTS RESERVED

DWG. C-9  
SHEET 23 OF SHEETS

513-64