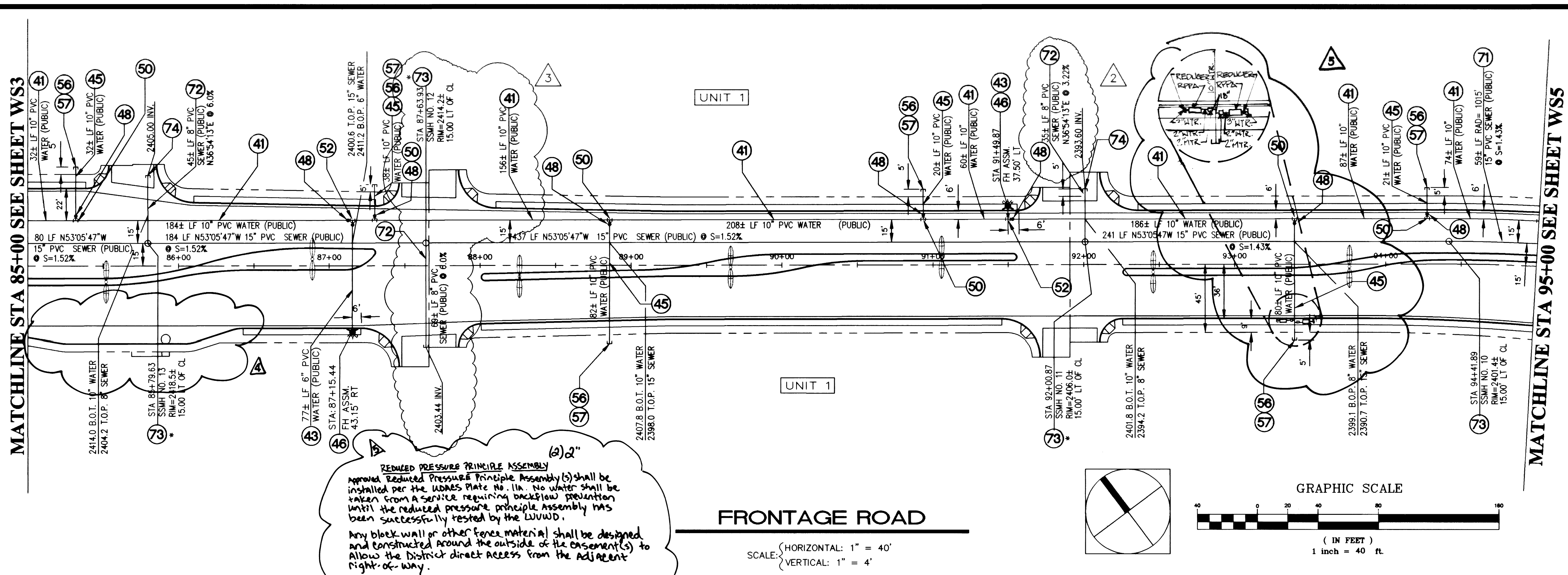


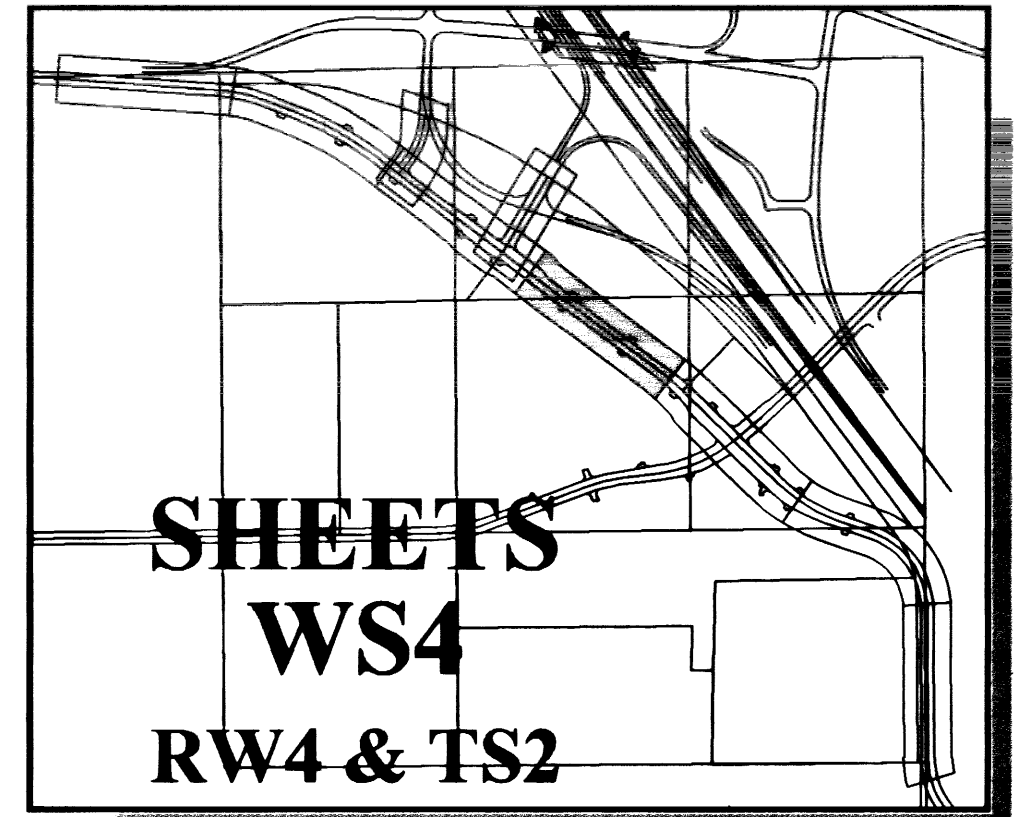
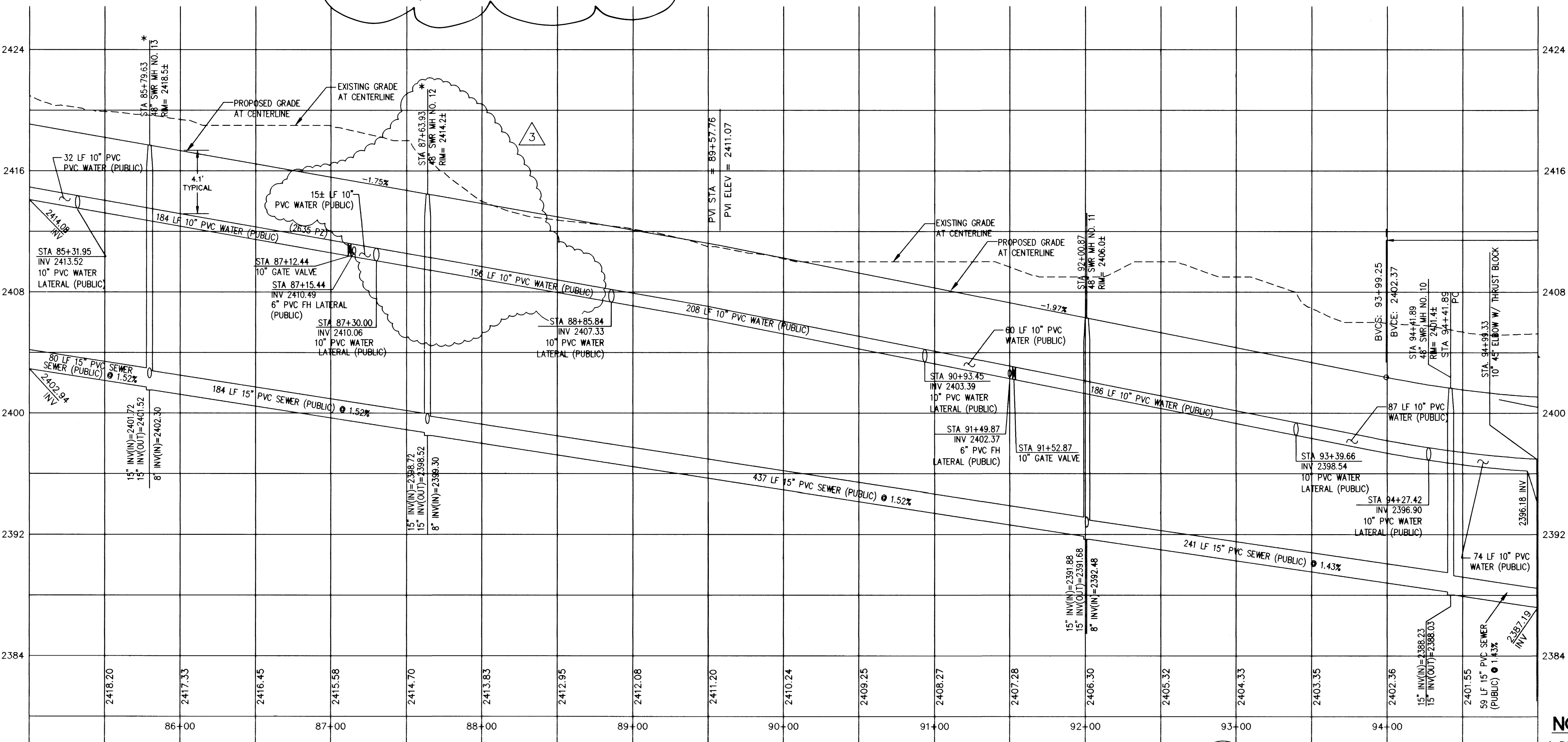
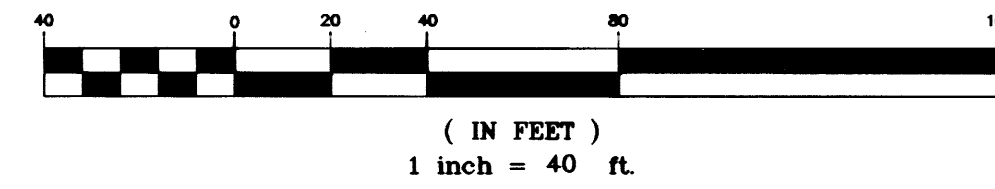
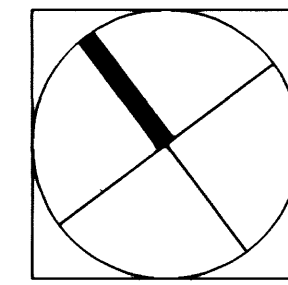
MATCHLINE STA 85+00 SEE SHEET WS3

MATCHLINE STA 95+00 SEE SHEET WS5



FRONTAGE ROAD

SCALE: (HORIZONTAL: 1" = 40'
VERTICAL: 1" = 4')



SHEETS WS4 RW4 & TS2

WATER CONSTRUCTION NOTES:

- 40 - CONSTRUCT, 12" PVC WATER LATERAL/MAIN
- 41 - CONSTRUCT, 10" PVC WATER MAIN
- 42 - CONSTRUCT, 8" PVC WATER MAIN
- 43 - CONSTRUCT, 6" PVC WATER LATERAL/MAIN
- 44 - CONSTRUCT, 8" PVC WATER LATERAL
- 45 - CONSTRUCT, 10" PVC WATER LATERAL
- 46 - INSTALL, FIRE HYDRANT ASSEMBLY PER UDACS PLATE NO.7 (INCLUDES 6"GV, 6"LAT., AND FH ASSEMBLY). SEE SHEET 32 FOR LOCATION IN AMENITY ZONE.
- 47 - INSTALL, 12" GATE VALVE PER UDACS PLATE NO. 8
- 48 - INSTALL, 10" GATE VALVE PER UDACS PLATE NO. 8
- 49 - INSTALL, 12"x12"x12" TEE
- 50 - INSTALL, 10"x10"x10" TEE
- 51 - INSTALL, 12"x12"x6" TEE
- 52 - INSTALL, 10"x10"x6" TEE
- 53 - INSTALL, 12" 90° ELBOW
- 54 - INSTALL, 10" 90° ELBOW
- 55 - INSTALL, 12"x10" REDUCER
- 56 - CAP END OF LINE
- 57 - INSTALL, 2" BLOW OFF ASSEMBLY PER UDACS PLATE 4
- 58 - INSTALL, 1" AIR-VAC ASSEMBLY PER DETAIL SHEET 32
- 59 - INSTALL, 3/8"x12" WET TAP PER UDACS SECTION 3.13
- 60 - INSTALL, 12" M.J. TAPPING SLEEVE & VALVE
- 61 - JOIN EXISTING WATER STUB
- 62 - INSTALL, 12" 45° BEND
- 63 - INSTALL, 8" VALVE PER UDACS PLATE NO. 8
- 64 - INSTALL, 12"x12"x10" TEE
- 65 - INSTALL, 12"x12"x8" TEE
- 66 - INSTALL, 12" 11 1/4" ELBOW
- 67 - INSTALL, 10"x10"x8" TEE

SEWER CONSTRUCTION NOTES:

- 70 - CONSTRUCT, 18" PVC SEWER MAIN
- 71 - CONSTRUCT, 15" PVC SEWER MAIN
- 72 - CONSTRUCT, 8" PVC SEWER LATERAL/MAIN
- 73 - CONSTRUCT, 48" DIA. SEWER MANHOLE PER STD. SD-1
- 74 - CONSTRUCT, STUB AND CAP
- 75 - CONSTRUCT, LATERAL CONNECTION PER STD. SD-17
- 76 - CONSTRUCT, 60" DIA SEWER MANHOLE PER STD. SD-1
- 77 - JOIN EXISTING 60" SEWER MANHOLE

BASIS OF BEARING:

NORTH 88°42'47" EAST FROM THE NORTHWEST CORNER OF SECTION 28, TOWNSHIP 19 SOUTH, RANGE 60 EAST, M.D.M., MARKED WITH A 3" BLM BRASS CAP, STAMPED "1956" TO THE NORTH QUARTER CORNER OF SAID SECTION 28, MARKED WITH A 1-1/2" ALUMINUM CAP, PER RECORD MAP OF SURVEY FOR NORTHWEST/WESTERN SEGMENT OF THE LAS VEGAS BELTWAY, RECORDED IN FILE 89, PAGE 3, OF SURVEYS, CLARK COUNTY RECORD, NEVADA.

BENCHMARK:

STATION 1LV90 33NES
RIVET & PLATE IN TOP OF CURB, ANN ROAD & BUFFALO DRIVE, SOUTH CURB LINE.

ELEV. = 723.0679 (METERS) NAVD88 DATUM
3.28083333 U.S. SURVEY FEET = 1 METER
ELEVATION = 2372.265 FEET

NOTES:

- A. EXISTING SANITARY SEWER TO REMAIN IN OPERATION UNTIL CLV ACCEPTANCE OF THE PROPOSED SANITARY SEWER.
- B. WATER METERS AND DOUBLE CHECK DETECTOR ASSEMBLIES ARE SHOWN FOR REFERENCE ONLY.



* NOTE
MANHOLES 12,13,& 19 TO
BE T-LOCKED PER CLV
REQUIREMENTS

1ST APP'D 12-12-97
DATE
L.V.V.W.D.

7448 W. SAHARA AVE
LAS VEGAS, NEVADA 8917
(702) 225-1400

CENTENNIAL CENTRE
A Limited Liability Company

WATER AND SEWER
PLAN AND PROFILE
STATION 85+00.00 - 95+00.00

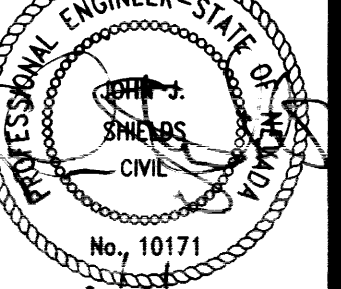
SHEET
TITLE

CENTENNIAL CENTRE
FRONTAGE ROAD

LAS VEGAS

SCALE: 1" = 40'

SEAL



28 OF 38 SHEETS
CLV DRAWING NO.
3079-4628

REPLLOT

2.1118 22589

REV DATE BY
11/18/99 JVS
11/18/99 JVS
11/18/99 JVS
11/18/99 JVS
11/18/99 JVS
11/18/99 JVS