

BENCHMARK
 CITY OF LAS VEGAS BENCHMARK
 OLVD001954 R/W & PLATE IN TOP OF CURB NW
 SIDE OF TOWN CENTER DRIVE & SOUTH CIRCLE ISLAND
 2728.37 NAVD 1988 DATUM (831.6074 M)
 2726.19 SUMMERLIN DATUM (DESIGN DATUM)

ESTIMATED UTILITY QUANTITIES

WATER (PRIVATE FROM FMCT)		SEWER	
10" WATERLINE	1,127 LF.	8" SEWER LINE (PUBLIC)	1,650 LF.
6" F.H. ASSEMBLY (INCLUDES 8" x 6" TEE AND 6" GATE VALVE)	5 EA.	4" SEWER LATERAL (PRIVATE)	98 EA.
10" GATE VALVE	2 EA.	48" SEWER MANHOLE (PUBLIC)	5 EA.
8" x 8" 8" TEE WITH THRUST BLOCK	0 EA.	STREET LIGHT	
10" 45° BEND WITH THRUST BLOCK	2 EA.	SOUTHWEST GAS LAMP	35 EA.
1" WATER SERVICE	98 EA.	STREET SIGNS	
CONNECT TO EXISTING	2 EA.	STOP SIGN (R1-1)	2 EA.
IRRIGATION SLEEVES PER SIS# U-18	123 LF.	STREET NAME SIGN	4 EA.
1" WATER SERVICE WITH RPPA PER UDACS PLATE NO. 10 AND IRRIGATION POWER SOURCE	6 EA.		

DRIVEWAY AND LATERAL STATION TABLE
 * ALL STATIONS IN THIS TABLE ARE AT BACK OF CURB

LOT NUMBER	DRIVEWAY		SEWER	
	DRIVEWAY CENTERLINE STATION	DRIVEWAY WIDTH	SEWER LATERAL STATION	WATER LATERAL STATION
1	STA: 16+16.80	16	STA: 15+98.88	STA: 16+03.89
2	STA: 16+44.41	16	STA: 16+29.07	STA: 16+34.11
3	STA: 16+75.43	16	STA: 16+57.29	STA: 16+62.32
4	STA: 17+20.77	16	STA: 17+02.82	STA: 17+07.86
5	STA: 17+48.38	16	STA: 17+33.05	STA: 17+38.09
6	STA: 17+79.40	16	STA: 17+61.26	STA: 17+66.30
7	STA: 18+24.85	16	STA: 18+06.90	STA: 18+11.94
8	STA: 18+52.47	16	STA: 18+42.17	STA: 18+47.13
9	STA: 18+83.48	16	STA: 18+65.34	STA: 18+70.38
77	STA: 17+66.22	16	STA: 17+78.99	STA: 17+83.87
78	STA: 17+38.82	16	STA: 17+49.04	STA: 17+54.04
79	STA: 17+08.04	16	STA: 17+21.04	STA: 17+26.04
80	STA: 16+66.22	16	STA: 16+78.04	STA: 16+84.04
81	STA: 16+38.82	16	STA: 16+49.04	STA: 16+54.04
82	STA: 16+08.04	16	STA: 16+21.04	STA: 16+26.04
83	STA: 15+66.22	16	STA: 15+79.04	STA: 15+84.04
84	STA: 15+38.82	16	STA: 15+49.04	STA: 15+54.04
85	STA: 14+08.04	16	STA: 14+21.04	STA: 14+26.04
86	STA: 14+66.54	16	STA: 14+79.35	STA: 14+84.35
87	STA: 14+39.13	16	STA: 14+49.35	STA: 14+54.35
88	STA: 14+07.92	16	STA: 14+21.25	STA: 14+26.35
113	STA: 14+06.70	16	STA: 13+89.15	STA: 13+94.04
114	STA: 14+33.50	16	STA: 14+18.45	STA: 14+23.33
115	STA: 14+64.28	16	STA: 14+46.28	STA: 14+51.28
116	STA: 15+06.10	16	STA: 14+93.28	STA: 14+88.28
117	STA: 15+33.50	16	STA: 15+18.28	STA: 15+23.28
118	STA: 15+64.28	16	STA: 15+46.28	STA: 15+51.28
119	STA: 16+06.10	16	STA: 15+93.28	STA: 15+88.28
120	STA: 16+33.50	16	STA: 16+18.28	STA: 16+23.28
121	STA: 16+64.28	16	STA: 16+46.28	STA: 16+51.28
122	STA: 17+06.10	16	STA: 16+93.28	STA: 16+88.28
123	STA: 17+33.50	16	STA: 17+18.39	STA: 17+23.39
124	STA: 17+64.28	16	STA: 17+46.28	STA: 17+51.28
125	STA: 18+06.10	16	STA: 18+33.50	STA: 18+40.64
126	STA: 18+33.50	16	STA: 18+75.38	STA: 18+70.41
127	STA: 18+64.28	16	STA: 18+45.60	STA: 18+40.64
174	STA: 18+00.03	16	STA: 18+17.81	STA: 18+12.84
175	STA: 17+69.64	16	STA: 17+77.39	STA: 17+72.42
176	STA: 17+32.51	16	STA: 17+47.61	STA: 17+42.64
177	STA: 17+02.03	16	STA: 17+19.81	STA: 17+14.85
178	STA: 16+62.68	16	STA: 16+80.42	STA: 16+75.46
179	STA: 16+35.54	16	STA: 16+45.50	STA: 16+40.53
180	STA: 16+05.06	16	STA: 16+22.85	STA: 16+17.89
181	STA: 15+63.25	16	STA: 15+81.07	STA: 15+76.07
182	STA: 15+35.85	16	STA: 15+51.07	STA: 15+46.07
183	STA: 15+05.07	16	STA: 15+23.07	STA: 15+18.07

UTILITY CONSTRUCTION NOTES

WATER (PRIVATE FROM FMCT)	SEWER
① 6" F.H. ASSEMBLY (INCLUDES 8" x 6" TEE AND 6" GATE VALVE)	④ 4" SEWER LATERAL (PRIVATE)
② 10" 45° ELBOW	⑩ 8" PVC SEWER (PUBLIC)
③ CONNECT TO EXISTING 10" WATER MAIN	⑪ 48" SEWER MANHOLE (PUBLIC)
④ 1" WATER SERVICE	⑫ EXISTING 4" SEWER LATERAL (PRIVATE)
⑤ IRRIGATION SLEEVES PER SIS# U-18	⑬ EXISTING 1" WATER SERVICE (PRIVATE)
⑥ 1" WATER SERVICE WITH RPPA PER UDACS PLATE NO. 10 AND IRRIGATION POWER SOURCE	STREET LIGHT
⑦ 10" WATER MAIN	⑭ GAS LAMP
⑧ 10" GATE VALVE	STREET SIGNS
	⑮ STOP SIGN (R1-1)
	⑯ STREET NAME SIGN (D-3)
	⑰ NO PARKING, PAINT CURB RED

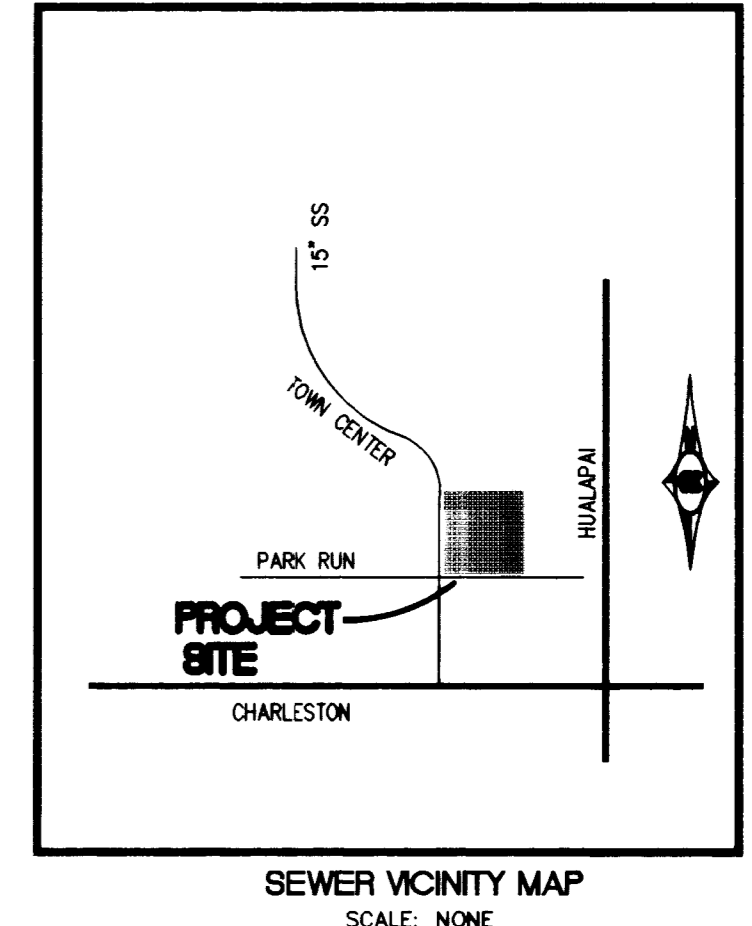
UTILITY AND SIGN LEGEND

	FIRE HYDRANT
	GATE VALVE
	SEWER MANHOLE
	STORM DRAIN MANHOLE
	WATER MAIN REDUCER
	GAS LAMP
	EXISTING STREET LIGHT
	SEWER BACKWATER VALVE
	BLOCK NUMBER
	STREET NAME SIGN
	STOP SIGN (R1-1)

REDUCED PRESSURE PRINCIPLE ASSEMBLY
 APPROVED REDUCED PRESSURE PRINCIPLE ASSEMBLY(S) SHALL BE INSTALLED PER THE UDACS PLATE NO. 11A. NO WATER SHALL BE TAKEN FROM A SERVICE REQUIRING BACKFLOW PREVENTION UNTIL THE REDUCED PRESSURE PRINCIPLE ASSEMBLY HAS BEEN SUCCESSFULLY TESTED BY THE LVWD.
 ANY BLOCK WALL OR OTHER FENCE MATERIAL SHALL BE DESIGNED AND CONSTRUCTED AROUND THE OUTSIDE OF THE EASEMENTS TO ALLOW DISTRICT DIRECT ACCESS FROM THE ADJACENT RIGHT-OF-WAY.

APPROVALS
 APPROVAL OF THESE PLANS SHALL NOT BE CONSTRUED TO BE A PERMIT OR AN APPROVAL OF ANY VIOLATION OF ANY OF THE PROVISIONS OF THE STATE OR COUNTY LAWS.
 CLV FIRE DEPARTMENT DATE: 7-26-99
 N/A LAS VEGAS VALLEY WATER DISTRICT DATE:

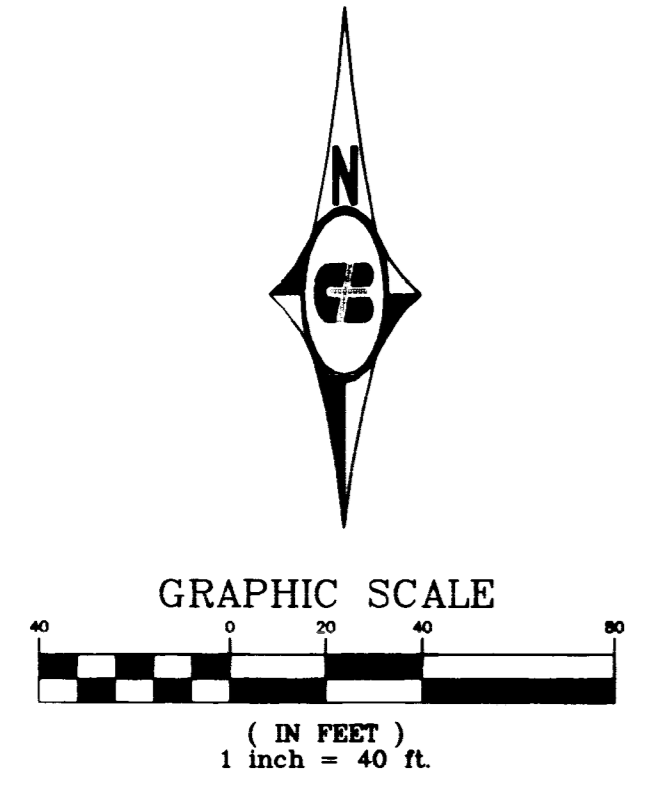
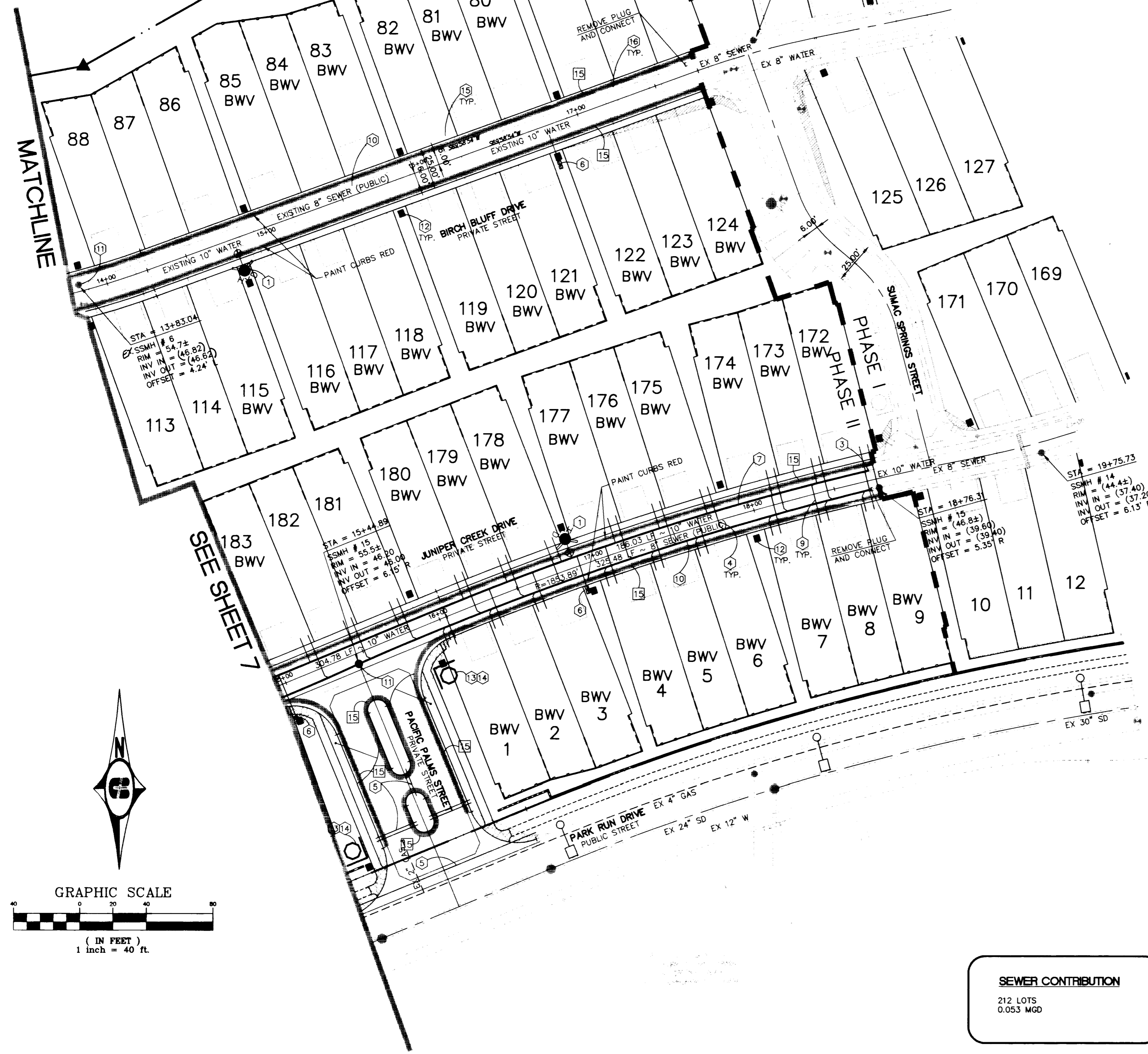
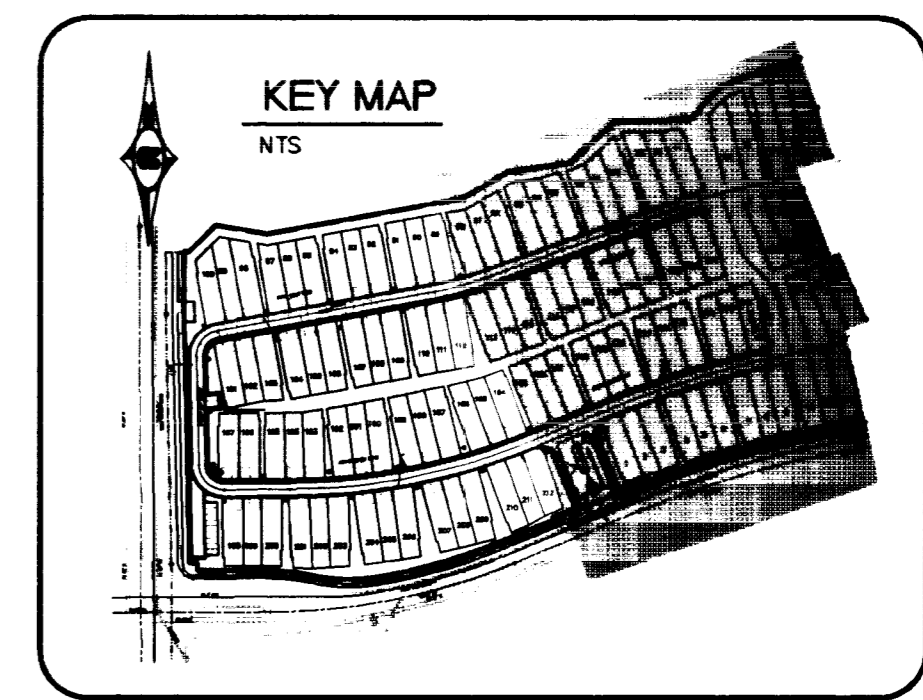
SEWER CONTRIBUTION
 212 LOTS
 0.053 MGD



DISCLAIMER NOTE:
 UTILITY LOCATIONS SHOWN HEREON ARE APPROXIMATE ONLY. IT SHALL BE THE CONTRACTOR'S RESPONSIBILITY TO DETERMINE THE EXACT HORIZONTAL AND VERTICAL LOCATION OF ALL EXISTING UNDERGROUND OR OVERHEAD UTILITIES PRIOR TO COMMENCING CONSTRUCTION. NO REPRESENTATION IS MADE THAT ALL EXISTING UTILITIES ARE SHOWN HEREON. THE ENGINEER ASSUMES NO RESPONSIBILITY FOR UTILITIES NOT SHOWN OR UTILITIES NOT SHOWN IN THEIR PROPER LOCATION. CONTRACTOR TO NOTIFY ENGINEER OF ANY CHANGES OR DISCREPANCIES.

Avoid cutting underground utility lines. If a conflict:
Call before you Dig
 1-800-227-2600
 UNDERGROUND SERVICE (USA)

Avoid overhead power line contact.
Call before you Overhead
 1-702-593-6111
 NEVADA POWER TRANSMISSION AND SAFETY SERVICES (NPTSS)



UTILITY PLAN

Pulte Homes
 An American Favorite

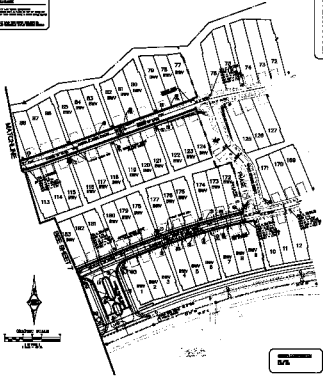
Carter Burgess
 6655 Bermuda road
 Las Vegas, NV 89119
 Consultants in Planning, Engineering, Architecture, Construction Management, and Related Services (702) 938-5400 Fax (702) 938-5454

COTTONWOOD TERRACE PHASE II

DRAWN BY: _____
 DESIGNED BY: _____
 CHECKED BY: _____
 PROJECT NO.: 980065010
 SCALE: 1"=40' N/A
 SHEET C7
 7 OF 14 SHEETS
 DRAWING NO. 307Y-4596-2

18379

NOTICE
 THIS PLAN IS THE PROPERTY OF THE CITY OF LOS ANGELES AND IS LOANED TO YOU BY THE CITY ENGINEER. IT IS TO BE USED ONLY FOR THE PURPOSES INTENDED AND IS NOT TO BE REPRODUCED OR TRANSMITTED IN ANY FORM OR BY ANY MEANS, ELECTRONIC OR MECHANICAL, INCLUDING PHOTOCOPYING, RECORDING, OR BY ANY INFORMATION STORAGE AND RETRIEVAL SYSTEM, WITHOUT THE WRITTEN PERMISSION OF THE CITY ENGINEER.



NOTICE TO CONTRACTORS

ITEM	QUANTITY	UNIT	PRICE
1. WATER MAIN	100	LINEAL FEET	10.00
2. SEWER MAIN	100	LINEAL FEET	12.00
3. GAS MAIN	100	LINEAL FEET	8.00
4. ELECTRIC MAIN	100	LINEAL FEET	15.00
5. WATER SERVICE	100	LINEAL FEET	10.00
6. SEWER SERVICE	100	LINEAL FEET	12.00
7. GAS SERVICE	100	LINEAL FEET	8.00
8. ELECTRIC SERVICE	100	LINEAL FEET	15.00
9. TOTAL			

UTILITY CONNECTIONS

ITEM	QUANTITY	UNIT	PRICE
1. WATER CONNECTION	100	LINEAL FEET	10.00
2. SEWER CONNECTION	100	LINEAL FEET	12.00
3. GAS CONNECTION	100	LINEAL FEET	8.00
4. ELECTRIC CONNECTION	100	LINEAL FEET	15.00
5. TOTAL			

UTILITY CONNECTIONS

ITEM	QUANTITY	UNIT	PRICE
1. WATER CONNECTION	100	LINEAL FEET	10.00
2. SEWER CONNECTION	100	LINEAL FEET	12.00
3. GAS CONNECTION	100	LINEAL FEET	8.00
4. ELECTRIC CONNECTION	100	LINEAL FEET	15.00
5. TOTAL			

GENERAL NOTES
 1. ALL UTILITIES SHALL BE INSTALLED IN ACCORDANCE WITH THE CITY ENGINEER'S SPECIFICATIONS.
 2. THE CONTRACTOR SHALL BE RESPONSIBLE FOR OBTAINING ALL NECESSARY PERMITS FROM THE CITY ENGINEER AND THE UTILITIES COMPANIES.
 3. THE CONTRACTOR SHALL MAINTAIN ACCESS TO ALL ADJACENT PROPERTIES AT ALL TIMES.

APPROVED
 DATE: 1/15/2010
 CITY ENGINEER

APPROVED
 DATE: 1/15/2010
 CITY ENGINEER

UTILITY AND ELECTRICAL SERVICE DATA
 ALL UTILITIES TO BE INSTALLED AS SHOWN ON THIS PLAN

ITEM	QUANTITY	UNIT	PRICE
1. WATER MAIN	100	LINEAL FEET	10.00
2. SEWER MAIN	100	LINEAL FEET	12.00
3. GAS MAIN	100	LINEAL FEET	8.00
4. ELECTRIC MAIN	100	LINEAL FEET	15.00
5. WATER SERVICE	100	LINEAL FEET	10.00
6. SEWER SERVICE	100	LINEAL FEET	12.00
7. GAS SERVICE	100	LINEAL FEET	8.00
8. ELECTRIC SERVICE	100	LINEAL FEET	15.00
9. TOTAL			



Public Hearing
 100 N. GARDEN ST., LOS ANGELES, CALIF. 90012

CITY ENGINEER
 100 N. GARDEN ST., LOS ANGELES, CALIF. 90012

DATE: 1/15/2010

TIME: 10:00 AM

LOCATION: 100 N. GARDEN ST., LOS ANGELES, CALIF. 90012

PROJECT: UTILITY AND ELECTRICAL SERVICE DATA

FILE NO.: 100 N. GARDEN ST.

SCALE: AS SHOWN

DATE: 1/15/2010

BY: [Signature]

TITLE: CITY ENGINEER