

REDUCED PRESSURE PRINCIPLE ASSEMBLY

APPROVED REDUCED PRESSURE PRINCIPLE ASSEMBLY(S) SHALL BE INSTALLED PER THE UDACS PLATE NO. 11A OR... NO WATER SHALL BE TAKEN FROM A SERVICE REQUIRING BACKFLOW PREVENTION UNTIL THE REDUCED PRESSURE PRINCIPLE ASSEMBLY HAS BEEN SUCCESSFULLY TESTED BY THE LVWD.

ANY BLOCK WALL OR OTHER FENCE MATERIAL SHALL BE DESIGNED AND CONSTRUCTED AROUND THE OUTSIDE OF THE EASEMENT(S) TO ALLOW THE DISTRICT DIRECT ACCESS FROM THE ADJACENT RIGHT-OF-WAY.

ESN. 026 2/15/97

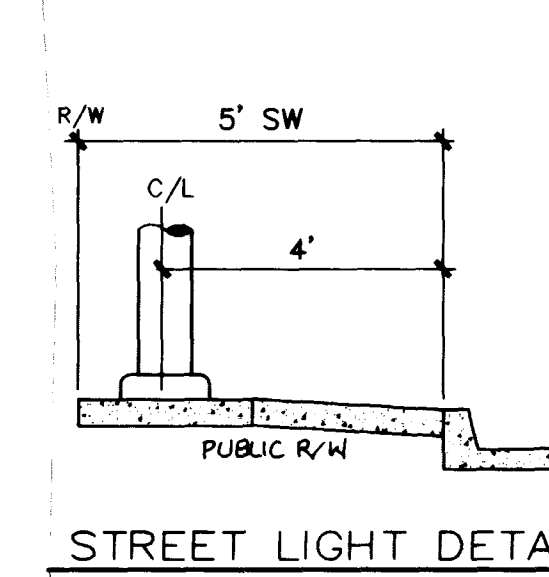
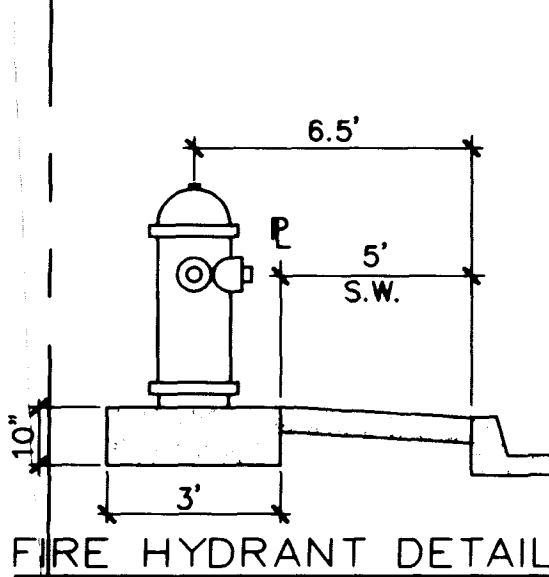
CONDITIONAL APPROVAL OF VALVED OUTLET (6" AND LARGER)

THE WATER PLANS SHOW ONE OR MORE VALVED OUTLETS EXTENDING OUT OF PAVED AREAS. INSTALLATION OF THESE OUTLETS IS ACCEPTABLE... HOWEVER, IF THE OUTLETS ARE INCORRECTLY LOCATED OR NOT USED FOR ANY REASON WHEN THE PROPERTY IS ACTUALLY DEVELOPED...

ESN. 037 6/23/97

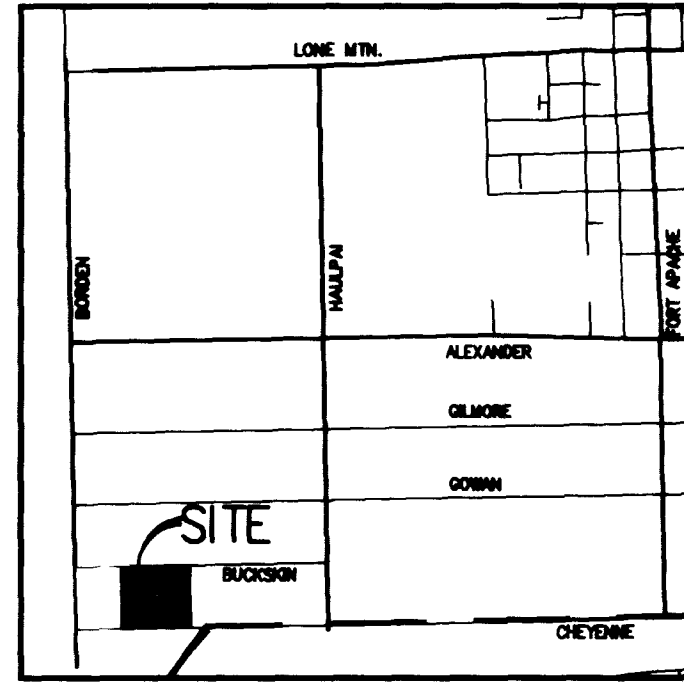
ABANDONMENT OF EXISTING SERVICES - 2" AND SMALLER

The Contractor shall notify the Inspection Division at the LVWD (702-368-3227) 48 hours prior to the requested removal line to allow the District to take the final meter reading of the meter. After the final reading, the existing meter(s) shall be removed and delivered to the District.



FIRE DEPARTMENT NOTES

- 1. ALL WORK SHALL BE DONE IN STRICT ACCORDANCE WITH THE CITY OF LAS VEGAS FIRE DEPARTMENT "HYDRANT SPECIFICATIONS," "HYDRANT INSTALLATION SPECIFICATIONS" AND ORDINANCE #3844.
2. AUTHORIZED HYDRANTS FOR THIS PROJECT ARE:
A. KENNEDY ASSEMBLY
B. MUELLER A-423 CENTURIAN
C. CLOW MODEL 2548 MEDALLION
3. ON ANY NEW HOME OR BUILDING INSTALLATION, ACCESSIBLE FIRE HYDRANTS SHALL BE INSTALLED BEFORE COMBUSTIBLE CONSTRUCTION COMMENCES...



ESTIMATE OF QUANTITIES

Table with 2 columns: Item Description and Quantity. Includes items like FIRE HYDRANT ASSEMBLY (10 EA), 6" GATE VALVE (0 EA), 8" GATE VALVE (15 EA), 8" X 8" REDUCER (4 EA), 8" TEE (8 EA), CAP W/ 2" B.O. (7 EA), 8" X 8" CROSS (2 EA), 8" 1 1/4" ELBOW (7 EA), 8" 22 1/2" ELBOW (4 EA), 8" 45" ELBOW (13 EA), 1 1/2" METER W/ 1 1/2" RPPA (1 EA), 3/4" METER W/ 3/4" RPPA (1 EA), FIRE HYDRANT ASSEMBLY (2 EA), 10" X 8" CROSS (2 EA), 10" GATE VALVE (6 EA), 12" GATE VALVE (2 EA), 12" X 10" REDUCER (1 EA), 12" TEE (1 EA), 12" 90" ELBOW (1 EA), 42" X 12" STEEL CYLINDER (.0250") METAL CYLINDER (1.50") MORTAR COATING (0.88") MORTAR LINING (14 GA WIRE REINFORCING SPIRAL WOUND (0.50" SPACING (1" COPPER SERVICE W/ 5/8" METER (udocs plate 1b) (174 EA), 6" WATER MAIN (627 LF), 8" WATER MAIN (5,351 LF), 10" WATER MAIN (1,292 LF), 12" WATER MAIN (1,326 LF), 10" X 8" TEE (1 EA), 3/4" RPPA (2 EA).

FIRE FLOW DATA

THE FIRE FLOW REQUIREMENTS IS 1500 GPM AT 20 PS RESIDUAL PRESSURE.
BASED ON:
SQUARE FOOTAGE: 3300 SF
LARGEST AREA BETWEEN 4-HOUR AREA SEPARATION WALLS: N/A
BUILDING HEIGHT: 23 FEET
NUMBER OF STORIES: 2 FLOORS
TYPE OF CONSTRUCTION: V-N
AUTOMATIC: SFR
FULL AUTOMATIC FIRE SPRINKLER SYSTEM:
REVIEWED BY: G. Miller
DATE: 6/24/97

NOTE: ONSITE SEWERS ARE PUBLIC

WATER CROSSING NOTE

THE FOLLOWING ARE THE REQUIREMENTS THAT MUST BE MET WHEN THERE IS A WATER-SEWER CROSSING:
WHEN PROTECTION OF THE WATERLINE IS CONSIDERED, THE MINIMUM VERTICAL DISTANCE OF 18 INCHES MUST BE MAINTAINED WHEN THE WATER LINE IS INSTALLED OVER THE SEWER/STORM LINE... IF THE DISTANCE CANNOT BE MAINTAINED BECAUSE OF PHYSICAL OBSTRUCTIONS OR THE WATERLINE MUST BE PLACED UNDER THE SEWER/STORM LINE, THE SEWER/STORM LINE MUST BE CONSTRUCTED WITH ANY ONE OF THE FOLLOWING:
A. EXTRA HEAVY CAST IRON OR DUCTILE IRON PIPE
B. WATER SUPPLY QUALITY MATERIAL
C. ENCASUREMENT WITH 4 INCHES MINIMUM OF CONCRETE OR SLEEVING WITH WATER QUALITY PIPE
EACH OF THESE PROVISIONS MUST BE EXTENDED FOR 10 FEET ON EITHER SIDE OF THE WATERLINE AT 90 DEGREES TO THE CROSSING.

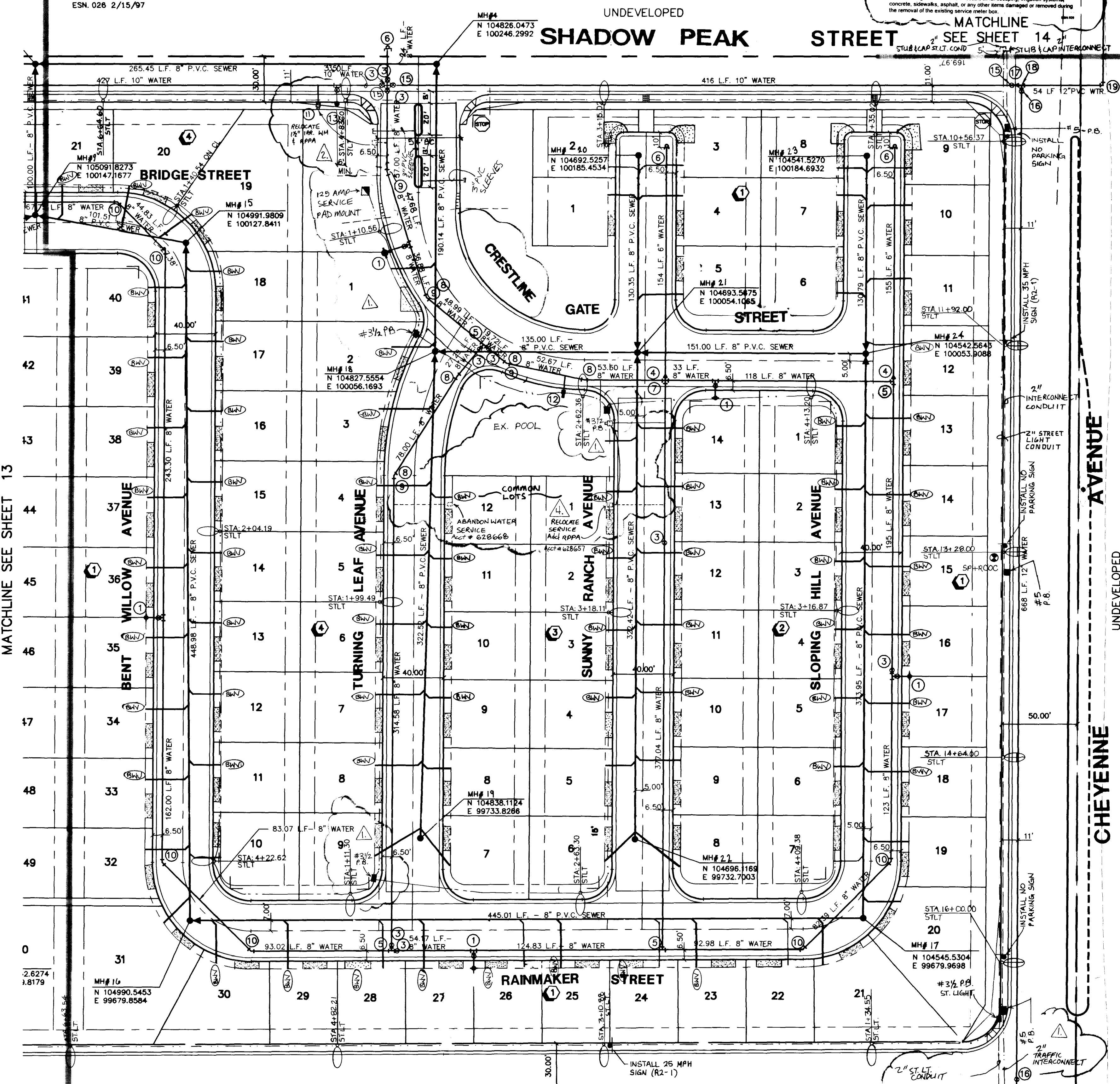
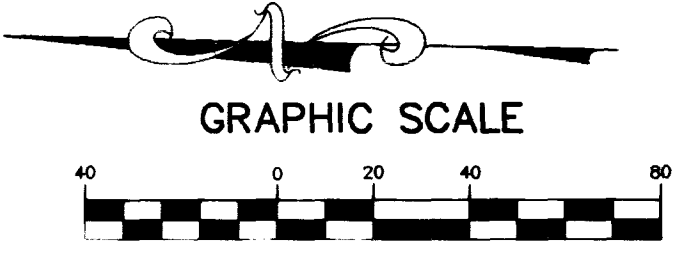
WATER DISTRICT STANDARD NOTES

- 1. NO WORK SHALL BEGUN UNTIL THE WATER PLANS HAVE BEEN RELEASED FOR CONSTRUCTION BY THE LVWD... 2. ALL WORK SHALL CONFORM TO LVWD STANDARD PLATES, DRAWINGS, AND SPECIFICATIONS... 3. ALL WORK, EXCEPT AS MODIFIED BY THESE PLANS OR BY NOTE 2, SHALL BE DONE IN ACCORDANCE WITH THE MOST CURRENT DRAFT OR EDITION OF THE UNIFORM STANDARD SPECIFICATIONS FOR PUBLIC WORKS CONSTRUCTION OFFSITE IMPROVEMENTS, CLARK COUNTY AREA... 4. A SINGLE PIPE MATERIAL SHALL BE USED THROUGHOUT THE PROJECT UNLESS OTHERWISE APPROVED BY THE LVWD... 5. ALL SERVICE LATERALS TWO (2) INCHES IN DIAMETER AND SMALLER SHALL BE COPPER TUBING WITH LVWD APPROVED APPROVED GATES SHALL BE STANDARD PLATE NO. 27... 6. ALL WATER METER BOXES SHALL BE LOCATED OUTSIDE OF DRIVEWAY AREAS... 7. ALL VALVES SHALL BE LOCATED OUTSIDE OF DRIVEWAYS, VALLEY AND CURB GUTTERS... 8. THE FOLLOWING REQUIREMENTS MUST BE MET IN THE EVENT A WATER LINE AND A SANITARY OR STORM SEWER LINE CROSS... 9. WARNING TAPE SHALL BE REQUIRED OVER ALL MAINS... 10. ALL WATER FACILITIES SHALL BE FILLED, DISINFECTED, PRESSURE TESTED, FLUSHED, FILLED AND AN ACCEPTABLE WATER SAMPLE OBTAINED PRIOR TO CONNECTION TO THE LVWD'S DISTRIBUTION SYSTEM... 11. THE CONTRACTOR MUST OBTAIN A MINIMUM OF TWO (2) INCHES AND SMALLER FROM LVWD CENTRAL STORES... 12. CONSTRUCTION MAY INTERRUPT SERVICE WITH LVWD APPROVAL AND PROPER NOTIFICATION... 13. ALL WATER FACILITY CONSTRUCTION MATERIALS USED MUST BE LISTED ON THE LVWD'S PRE-APPROVED MATERIALS AND MANUFACTURERS LISTING FOR THESE PLANS.

THE SUBJECT PROJECT CANNOT BE APPROVED UNTIL THE AGREEMENTS FOR THE OVERSIZED MAIN ARE EXECUTED BY THE DEVELOPER AND ALL REQUIRED EASEMENTS, RIGHT-OF-WAY, AND DEPOSITS FOR THE DESIGN AND CONSTRUCTION OF THE OVERSIZED MAIN ARE PROVIDED TO THE DISTRICT.

APPROVALS:
CITY OF LAS VEGAS FIRE MARSHALL DATE: 6/24/97
LAS VEGAS VALLEY WATER DISTRICT DATE: 6/30/97
NEVADA POWER COMPANY DATE: 8/6/97

NEVADA POWER COMPANY APPROVAL IS ONLY FOR THE PLACEMENT AND CLEARANCE OF STREET LIGHTS AND SIGNAL LIGHT INSTALLATION.



BASIS OF BEARING: NORTH 89°32'44" WEST, BEING THE SOUTH LINE OF THE SOUTHEAST QUARTER (SE 1/4) OF SECTION 12, TOWNSHIP 20 SOUTH, RANGE 59 EAST, M.D.M., CITY OF LAS VEGAS, CLARK COUNTY, NEVADA, AS SHOWN ON THAT CERTAIN MAP ON FILE IN THE OFFICE OF THE COUNTY RECORDER, CLARK COUNTY, NEVADA, IN FILE 81 OF SURVEYS, AT PAGE 44.

SEWER CONNECTION NOTE: ONE OR MORE SEGMENTS OF THE DOWNSTREAM SEWER SYSTEM THAT WILL SERVE THIS PROJECT HAS NOT BEEN COMPLETED AND/OR ACCEPTED FOR MAINTENANCE BY THE CITY OF LAS VEGAS... ANY WORK DONE ON THIS PROJECT PRIOR TO THE COMPLETION AND/OR ACCEPTANCE OF THE DOWN STREAM SEWER SYSTEM(S) SHALL BE DONE AT THE DEVELOPER'S OWN RISK... THE CITY OF LAS VEGAS RESERVES THE RIGHT TO PREVENT THE PHYSICAL CONNECTION OF THIS PROJECT INTO THE DOWNSTREAM SEWER SYSTEM UNTIL ALL SEGMENTS HAVE BEEN COMPLETED AND ACCEPTED FOR MAINTENANCE, OR UNTIL SUCH TIME AS THEY ARE DEEMED AVAILABLE FOR SERVICE.

STREET LIGHT NOTE: ALL HAND HOLE COVERS MUST BE INSTALLED, POLE CAPS POURED AND PULL BOX LIDS BOLTED DOWN PRIOR TO ENERGIZING CIRCUIT... STREET LIGHT NOTE: ALL STREET LIGHTING INSTALLATION EXCEPT AS NOTED ON THESE PLANS SHALL CONFORM TO THE IMPROVEMENT STANDARD SPECIFICATIONS FOR PUBLIC WORKS CONSTRUCTION, OFF-SITE IMPROVEMENTS, CLARK COUNTY AREA, NEVADA. ALL POLES TO BE GALVANIZED.

Call before you Dig 1-800-227-2600
CLARK COUNTY BENCHMARK: 1C00654
RIVT & SQUARE PLATE IN A CONCRETE MONUMENT 50' NORTH AND 25' WEST OF GRAND CANYON DRIVE AND ALEXANDER ROAD.
ELEVATION=792.992 METERS (NAVD 88)
ELEVATION=2601.67 FEET (NAVD 88 DATUM)

NOTE: CONTRACTOR SHALL VERIFY HORIZONTAL AND VERTICAL LOCATION OF EXISTING UTILITIES AND NOTIFY THE DESIGN ENGINEER IMMEDIATELY OF ANY DISCREPANCIES PRIOR TO CONSTRUCTION.

PERMA-BILT HOMES
CITY OF LAS VEGAS, NEVADA
CONSULTING ENGINEERS • LAND SURVEYORS
2727 SOUTH RAINBOW BOULEVARD
LAS VEGAS, NEVADA 89102-5148
(702) 873-7550 FAX (702) 362-2597
MASTER UTILITY PLAN
CHEYENNE / HUAPALAI I
PROJECT
SEAL
JOSEPH D. THOMPSON
CIVIL
NO. 11801
EXPIRES 12/31/97
NO. 5016-1
BY: JOE T. R/TS
DATE: APRIL, '97
SCALE: HORIZ. 1"=40'
VERT. NONE
SHEET 12 OF 22 SHEETS
307Y-4524-1

