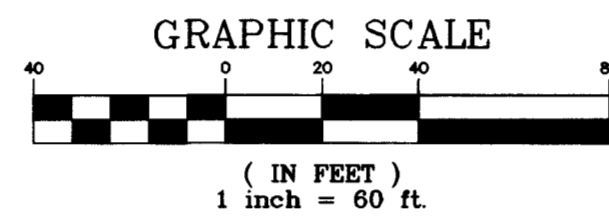


**DISCLAIMER NOTE:**

UTILITY LOCATIONS SHOWN HEREON ARE APPROXIMATE ONLY. IT SHALL BE THE CONTRACTOR'S RESPONSIBILITY TO DETERMINE THE EXACT HORIZONTAL AND VERTICAL LOCATION OF ALL EXISTING UNDERGROUND OR OVERHEAD UTILITIES PRIOR TO COMMENCING CONSTRUCTION. NO REPRESENTATION IS MADE THAT ALL EXISTING UTILITIES ARE SHOWN HEREON. THE ENGINEER ASSUMES NO RESPONSIBILITY FOR UTILITIES NOT SHOWN OR UTILITIES NOT SHOWN IN THEIR PROPER LOCATION. CONTRACTOR TO NOTIFY ENGINEER OF ANY CHANGES OR DISCREPANCIES.

Avoid cutting underground utility lines. It's costly.  
**Call before you Dig**  
800-368-5848  
UNDERGROUND SERVICE (USA)

Avoid overhead power line contact.  
**Call before you Overhead**  
1-772-593-6441  
NEVADA POWER ENVIRONMENT AND SAFETY SERVICES DEPARTMENT



**ABANDON CUT AND CAP**

THE CONTRACTOR SHALL CUT THE EXISTING PIPE 3'-4" BEYOND THE EX. 12" X 6" TEE AND INSTALL A CAP. WHERE A JOINT OR COUPLING IN THE EXISTING PIPE IS UNCOVERED AT THE CUT AND CAP LOCATION, THE INSTALLATION OF A PLUG MAY BE PERMITTED WITH DISTRICT APPROVAL. THE CONTRACTOR SHALL INSTALL A CONCRETE THRUST BLOCK IN ACCORDANCE WITH THE PROVISIONS OF THE UDASC PLATE No. 5 AT ALL CAP OR PLUG LOCATIONS.

**NOTE**

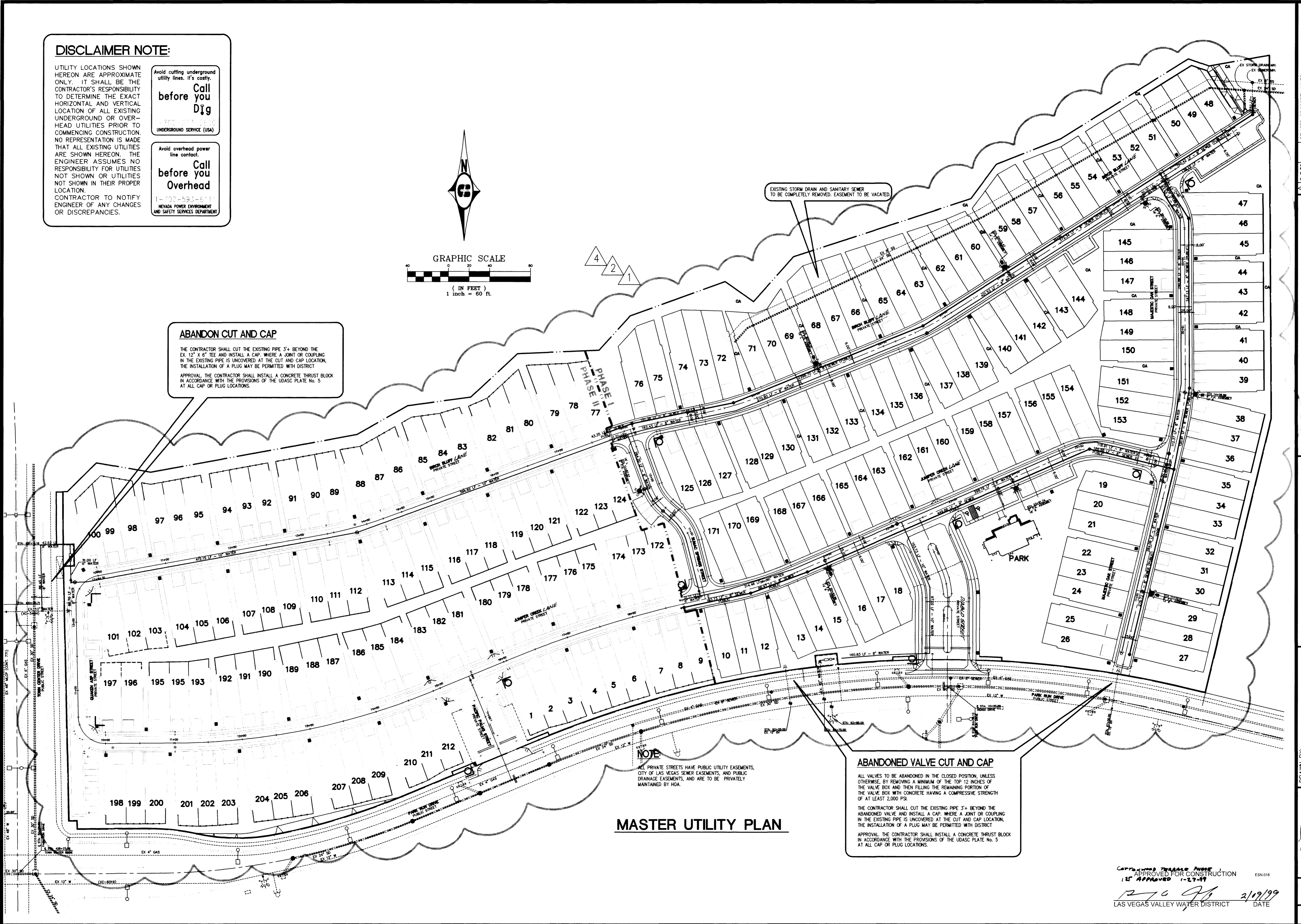
ALL PRIVATE STREETS HAVE PUBLIC UTILITY EASEMENTS, CITY OF LAS VEGAS SEWER EASEMENTS, AND PUBLIC DRAINAGE EASEMENTS, AND ARE TO BE PRIVATELY MAINTAINED BY HOA.

**ABANDONED VALVE CUT AND CAP**

ALL VALVES TO BE ABANDONED IN THE CLOSED POSITION, UNLESS OTHERWISE, BY REMOVING A MINIMUM OF THE TOP 12 INCHES OF THE VALVE BOX AND THEN FILLING THE REMAINING PORTION OF THE VALVE BOX WITH CONCRETE HAVING A COMPRESSIVE STRENGTH OF AT LEAST 2,000 PSI.

THE CONTRACTOR SHALL CUT THE EXISTING PIPE 3'-4" BEYOND THE ABANDONED VALVE AND INSTALL A CAP. WHERE A JOINT OR COUPLING IN THE EXISTING PIPE IS UNCOVERED AT THE CUT AND CAP LOCATION, THE INSTALLATION OF A PLUG MAY BE PERMITTED WITH DISTRICT APPROVAL. THE CONTRACTOR SHALL INSTALL A CONCRETE THRUST BLOCK IN ACCORDANCE WITH THE PROVISIONS OF THE UDASC PLATE No. 5 AT ALL CAP OR PLUG LOCATIONS.

**MASTER UTILITY PLAN**



<p><b>Pulte Homes</b> An American Favorite</p> <p><b>Carlter Burgess</b> Consultants in Planning, Engineering, Architecture, Construction Management, and Related Services</p>	<p>REVISED PROPERTY LINES REVISED CIV. STD. STREETLIGHT TO GAS LAMP REALIGNED MAJESTIC OAK AND RELOCATED SEWER MH 8 &amp; 9 REMOVED STREET NAME TO ADJACENT</p>
<p>FLUTE HOMES CORPORATION 1835 Village Center Circle, Suite 250 Las Vegas, Nevada 89164 (702) 258-7800</p>	<p>2955 East Sunset Road, Suite 105 Las Vegas, NV 89120 (702) 798-1007 Fax (702) 798-7056</p>
<p><b>MASTER UTILITY PLAN</b></p> <p><b>COTTONWOOD TERRACE PHASE I</b></p>	<p>SCALE: 1"=50' HORIZ. N/A VERT.</p>
<p>DRAWN BY: JMR DESIGNED BY: ES CHECKED BY: JBT PROJECT NO.: 98V0650D</p>	<p>APPROVED FOR CONSTRUCTION 1-27-19 2/19/19 LAS VEGAS VALLEY WATER DISTRICT</p>
<p>PROFESSIONAL ENGINEER-STATE OF NEVADA RANDALL J. FARR CIVIL No. 9655</p>	<p>SHEET 5 OF 19 SHEETS DRAWING NO. 307P-4576-1</p>

L:\98V065\DESIGN\PH1\8065mup.dwg P1: Feb 05 09:14:55 1999 DL

13760 S. 33

14457

THIS IS A REPORT

