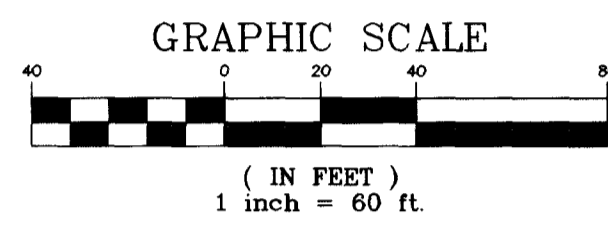


DISCLAIMER NOTE:

UTILITY LOCATIONS SHOWN HEREON ARE APPROXIMATE ONLY. IT SHALL BE THE CONTRACTOR'S RESPONSIBILITY TO DETERMINE THE EXACT HORIZONTAL AND VERTICAL LOCATION OF ALL EXISTING UNDERGROUND OR OVERHEAD UTILITIES PRIOR TO COMMENCING CONSTRUCTION. NO REPRESENTATION IS MADE THAT ALL EXISTING UTILITIES ARE SHOWN HEREON. THE ENGINEER ASSUMES NO RESPONSIBILITY FOR UTILITIES NOT SHOWN OR UTILITIES NOT SHOWN IN THEIR PROPER LOCATION. CONTRACTOR TO NOTIFY ENGINEER OF ANY CHANGES OR DISCREPANCIES.

Avoid cutting underground utility lines. It's costly.
Call before you Dig
UNDERGROUND SERVICE (USA)

Avoid overhead power line contact.
Call before you Overhead
NEVADA POWER ENVIRONMENT AND SAFETY SERVICES DEPARTMENT



ABANDON CUT AND CAP

THE CONTRACTOR SHALL CUT THE EXISTING PIPE 3'± BEYOND THE EX. 12" X 6" TEE AND INSTALL A CAP, WHERE A JOINT OR COUPLING IN THE EXISTING PIPE IS UNCOVERED AT THE CUT AND CAP LOCATION. THE INSTALLATION OF A PLUG MAY BE PERMITTED WITH DISTRICT APPROVAL. THE CONTRACTOR SHALL INSTALL A CONCRETE THRUST BLOCK IN ACCORDANCE WITH THE PROVISIONS OF THE UDASC PLATE No. 5 AT ALL CAP OR PLUG LOCATIONS.

NOTE

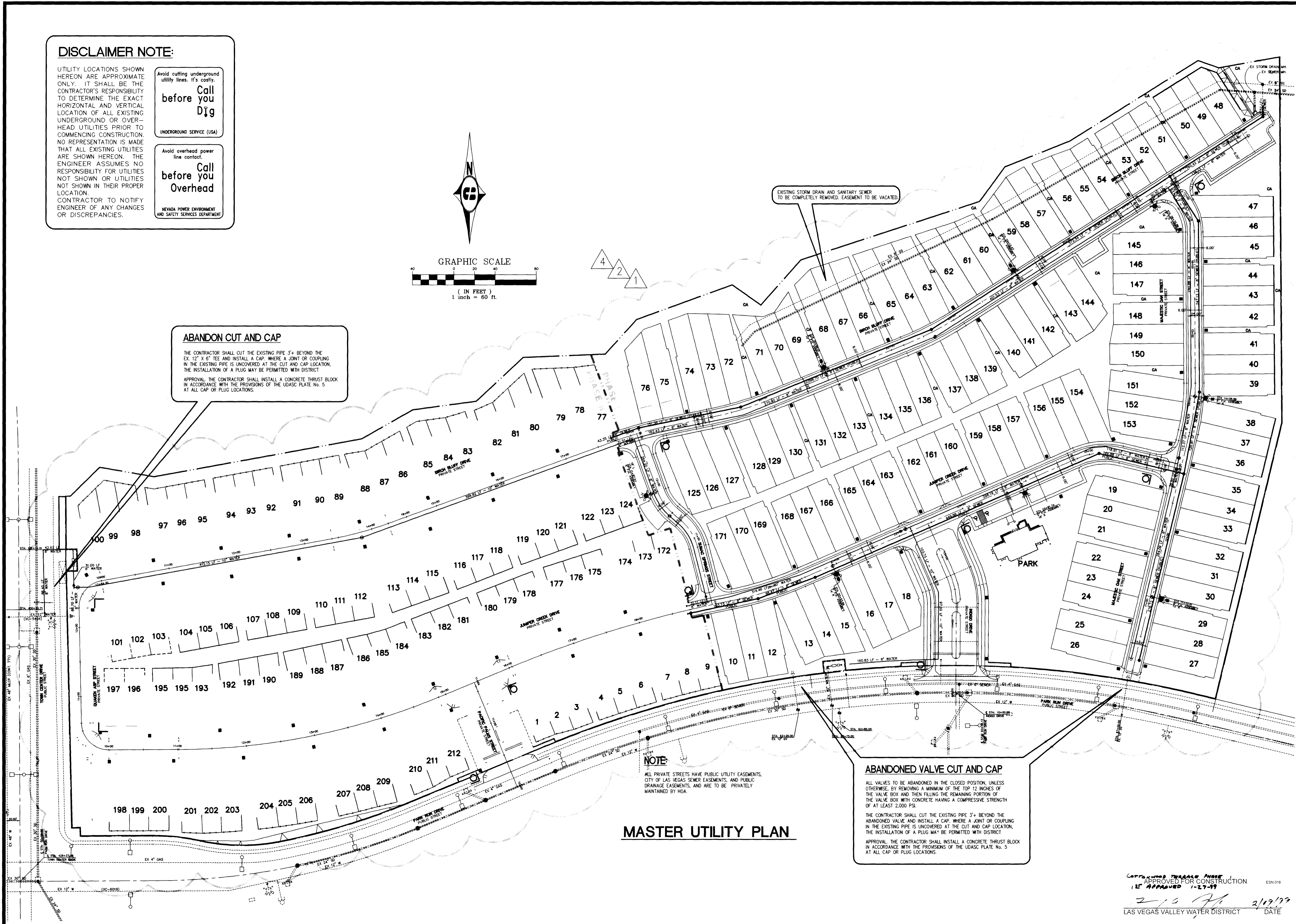
ALL PRIVATE STREETS HAVE PUBLIC UTILITY EASEMENTS, CITY OF LAS VEGAS SEWER EASEMENTS, AND PUBLIC DRAINAGE EASEMENTS, AND ARE TO BE PRIVATELY MAINTAINED BY HOA.

ABANDONED VALVE CUT AND CAP

ALL VALVES TO BE ABANDONED IN THE CLOSED POSITION, UNLESS OTHERWISE, BY REMOVING A MINIMUM OF THE TOP 12 INCHES OF THE VALVE BOX AND THEN FILLING THE REMAINING PORTION OF THE VALVE BOX WITH CONCRETE HAVING A COMPRESSIVE STRENGTH OF AT LEAST 2,000 PSI.

THE CONTRACTOR SHALL CUT THE EXISTING PIPE 3'± BEYOND THE ABANDONED VALVE AND INSTALL A CAP, WHERE A JOINT OR COUPLING IN THE EXISTING PIPE IS UNCOVERED AT THE CUT AND CAP LOCATION. THE INSTALLATION OF A PLUG MAY BE PERMITTED WITH DISTRICT APPROVAL. THE CONTRACTOR SHALL INSTALL A CONCRETE THRUST BLOCK IN ACCORDANCE WITH THE PROVISIONS OF THE UDASC PLATE No. 5 AT ALL CAP OR PLUG LOCATIONS.

MASTER UTILITY PLAN



COTTONWOOD TERRACE PHASE I
APPROVED FOR CONSTRUCTION
1" APPROVED 1-27-19
2/19/19
LAS VEGAS VALLEY WATER DISTRICT DATE

<p>Pulte Homes An American Favorite</p> <p>Carlter Burgess Consultants in Planning, Engineering, Architecture, Construction Management, and Related Services</p>	<p>REVISIONS:</p> <table border="1"> <tr><th>NO.</th><th>DATE</th><th>BY</th><th>REVISION</th></tr> <tr><td>2-5-19</td><td></td><td></td><td>REVISED PROPERTY LINES</td></tr> <tr><td>2-5-19</td><td></td><td></td><td>REVISED CIV. STD. STREETLIGHT TO GAS LAMP</td></tr> <tr><td>2-5-19</td><td></td><td></td><td>REALIGNED MAJESTIC OAK A&D</td></tr> <tr><td>2-5-19</td><td></td><td></td><td>RELOCATED SEWER MH 8 & 9</td></tr> </table>	NO.	DATE	BY	REVISION	2-5-19			REVISED PROPERTY LINES	2-5-19			REVISED CIV. STD. STREETLIGHT TO GAS LAMP	2-5-19			REALIGNED MAJESTIC OAK A&D	2-5-19			RELOCATED SEWER MH 8 & 9
NO.	DATE	BY	REVISION																		
2-5-19			REVISED PROPERTY LINES																		
2-5-19			REVISED CIV. STD. STREETLIGHT TO GAS LAMP																		
2-5-19			REALIGNED MAJESTIC OAK A&D																		
2-5-19			RELOCATED SEWER MH 8 & 9																		
<p>MASTER UTILITY PLAN</p>	<p>PROJECT NO. 980066010</p> <p>SCALE: 1"=50' HORIZ. VERT. N/A</p>																				
<p>COTTONWOOD TERRACE PHASE I</p>	<p>SHEET C5</p> <p>5 OF 19 SHEETS</p> <p>DRAWING NO. 3071-4596-1</p>																				

