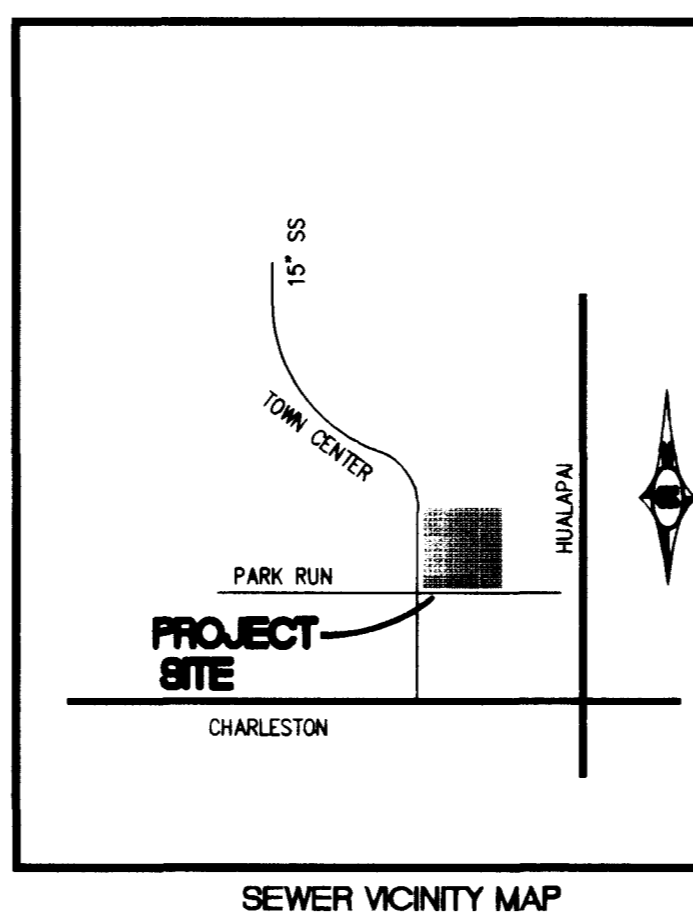


INSTALLATION OF METER AND VAULT (2) 6" X 3' FMCT

THE METER(S) AND VAULT(S) WITH NON-TRAFFIC BEARING COVER(S) SHALL BE INSTALLED IN ACCORDANCE WITH THE UDACS PLATE NO. 210 AND WITH STANDARD VAULT DRAWING C-475, LATEST REVISION.

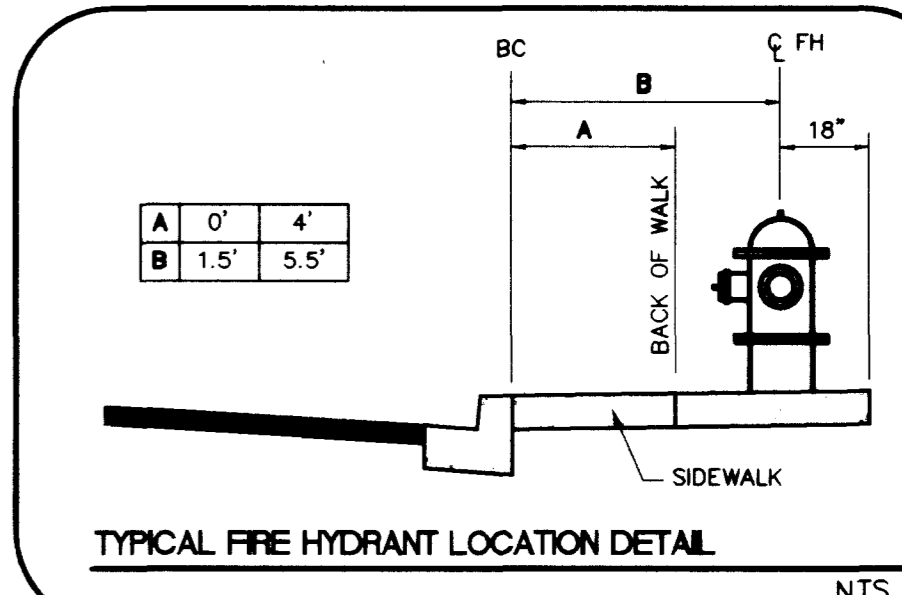
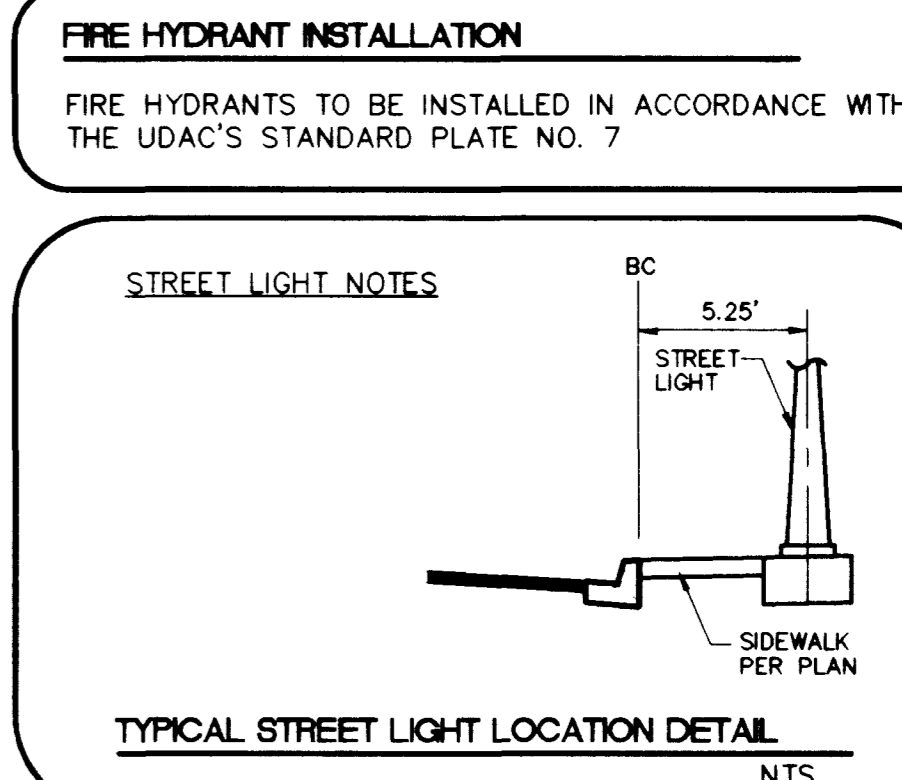
ANY BLOCK WALL OR OTHER FENCE MATERIAL SHALL BE DESIGNED AND CONSTRUCTED AROUND THE OUTSIDE OF THE EASEMENT(S) TO ALLOW THE DISTRICT DIRECT ACCESS TO THE VAULT(S) FROM THE ADJACENT RIGHT-OF-WAY.

METERS MUST BE SET IN A HORIZONTAL POSITION. AT LEAST EIGHT (8) DIAMETERS OF STRAIGHT PIPE ARE REQUIRED AT THE INLET END.



DRIVEWAY AND LATERAL STATION TABLE
* ALL STATIONS IN THIS TABLE ARE AT BACK OF CURB

LOT NUMBER	DRIVEWAY		SEWER		WATER	
	CENTERLINE STATION	WIDTH	LATERAL STATION	LATERAL STATION	LATERAL STATION	LATERAL STATION
10	STA: 19+26.74	16	STA: 19+08.78	STA: 19+13.82		
11	STA: 19+53.78	16	STA: 19+38.93	STA: 19+43.81		
12	STA: 19+80.82	16	STA: 19+71.30	STA: 19+76.29		
13	STA: 20+07.86	16	STA: 20+02.79	STA: 20+07.56		
14	STA: 20+34.90	16	STA: 20+31.98	STA: 20+36.86		
15	STA: 20+61.94	16	STA: 20+64.66	STA: 20+69.66		
16	STA: 20+88.98	16	STA: 21+01.66	STA: 21+06.66		
17	STA: 21+16.02	16	STA: 21+31.66	STA: 21+36.66		
18	STA: 21+43.06	16	STA: 21+59.66	STA: 21+64.66		
60	STA: 23+86.65	16	STA: 23+99.47	STA: 24+04.47		
61	STA: 23+59.24	16	STA: 23+59.47	STA: 23+74.47		
62	STA: 23+28.46	16	STA: 23+41.46	STA: 23+46.46		
63	STA: 22+78.31	16	STA: 22+96.63	STA: 22+91.50		
64	STA: 22+50.19	16	STA: 22+55.80	STA: 22+60.66		
65	STA: 22+18.60	16	STA: 22+37.35	STA: 22+32.21		
66	STA: 21+73.19	16	STA: 21+90.87	STA: 21+85.86		
67	STA: 21+45.79	16	STA: 21+60.87	STA: 21+55.86		
68	STA: 21+15.01	16	STA: 21+32.87	STA: 21+27.86		
69	STA: 20+73.19	16	STA: 20+90.87	STA: 20+85.86		
70	STA: 20+45.79	16	STA: 20+60.87	STA: 20+55.86		
71	STA: 20+15.01	16	STA: 20+32.87	STA: 20+27.86		
72	STA: 19+62.13	16	STA: 19+75.38	STA: 19+80.29		
73	STA: 19+34.01	16	STA: 19+49.53	STA: 19+44.40		
74	STA: 19+02.84	16	STA: 19+15.76	STA: 19+20.81		
75	STA: 18+60.98	16	STA: 18+78.73	STA: 18+73.72		
76	STA: 18+33.27	16	STA: 18+48.75	STA: 18+43.90		
125	STA: 18+82.21	16	STA: 18+49.53	STA: 18+44.31		
126	STA: 18+90.12	16	STA: 18+80.01	STA: 18+74.97		
127	STA: 19+21.39	16	STA: 19+08.52	STA: 19+03.49		
128	STA: 19+62.13	16	STA: 19+50.30	STA: 19+45.18		
129	STA: 19+88.78	16	STA: 19+73.73	STA: 19+78.88		
130	STA: 20+18.82	16	STA: 20+01.08	STA: 20+06.01		
131	STA: 20+60.84	16	STA: 20+42.82	STA: 20+47.82		
132	STA: 20+88.04	16	STA: 20+72.82	STA: 20+77.82		
133	STA: 21+18.82	16	STA: 21+00.82	STA: 21+05.82		
134	STA: 21+61.97	16	STA: 21+44.15	STA: 21+49.15		
135	STA: 21+89.37	16	STA: 21+74.15	STA: 21+79.15		
136	STA: 22+20.12	16	STA: 22+02.15	STA: 22+07.15		
137	STA: 22+58.63	16	STA: 22+46.60	STA: 22+41.54		
138	STA: 22+85.17	16	STA: 22+69.95	STA: 22+75.13		
139	STA: 18+33.27	16	STA: 22+97.30	STA: 23+02.24		
157	STA: 24+16.31	16	STA: 24+34.12	STA: 24+29.12		
158	STA: 23+88.90	16	STA: 24+04.12	STA: 23+99.12		
159	STA: 23+58.12	16	STA: 23+76.12	STA: 23+71.12		
160	STA: 23+16.31	16	STA: 23+34.12	STA: 23+29.12		
161	STA: 22+88.90	16	STA: 23+04.12	STA: 22+99.12		
162	STA: 22+58.12	16	STA: 22+76.12	STA: 22+71.12		
163	STA: 22+16.31	16	STA: 22+34.12	STA: 22+29.12		
164	STA: 21+88.90	16	STA: 21+76.12	STA: 21+71.12		
165	STA: 21+58.12	16	STA: 21+46.60	STA: 21+41.54		
166	STA: 21+16.31	16	STA: 21+29.12	STA: 21+34.12		
167	STA: 20+88.90	16	STA: 20+99.12	STA: 21+04.12		
168	STA: 20+58.12	16	STA: 20+76.12	STA: 20+71.12		
169	STA: 20+15.01	16	STA: 20+28.71	STA: 20+33.75		
170	STA: 19+86.90	16	STA: 19+97.90	STA: 20+02.70		
171	STA: 19+54.79	16	STA: 19+72.86	STA: 19+67.17		



- UTILITY CONSTRUCTION NOTES**
- | | |
|--|---|
| WATER | WATER |
| 1) 6" F.H. ASSEMBLY (INCLUDES 8" X 6" TEE AND 6" GATE VALVE) | 18) 10" X 10" TEE W/ THRUST BLOCK |
| 2) 8" GATE VALVE | 19) 10" WATER MAIN |
| 3) 8" WATER MAIN | 20) 12" X 8" TAPPING TEE AND VALVE |
| 4) 8" X 8" TEE WITH THRUST BLOCK | 21) 12" X 6" REDUCER |
| 5) 8" 90° BEND WITH THRUST BLOCK | 22) 6" 90° BEND |
| 6) 1" WATER SERVICE | SEWER |
| 7) IRRIGATION SLEEVES PER SIF# U-18 | 10) 4" SEWER LATERAL |
| 8) 8" X 10" REDUCER | 11) 8" SEWER |
| 9) 8" 18" FABRICATED BEND | 12) 48" SEWER MANHOLE |
| 10) 1" WATER SERVICE WITH RPPA PER UDACS PLATE NO. 110 AND IRRIGATION POWER SOURCE | STREET LIGHT |
| 11) 10" GATE VALVE | 13) 1 1/2" PULLBOX |
| 12) 8" X 6" REDUCER | 14) 1 1/4" CONDUIT WITH 2 #4 AND 1 #8 CONDUCTOR |
| | STREET SIGNS |
| | 15) STOP SIGN (R1-1) |
| | 16) STREET NAME SIGN (D-3) |

APPROVALS

APPROVAL OF THESE PLANS SHALL NOT BE CONSTRUED TO BE A PERMIT FOR OR AN APPROVAL OF ANY VIOLATION OF ANY OF THE PROVISIONS OF THE STATE OR COUNTY LAWS.

CLV: *[Signature]* FIRE DEPARTMENT DATE: 1/27/99
[Signature] DATE: 1/27/99
 LAS VEGAS VALLEY WATER DISTRICT

ABANDONED VALVE CUT AND CAP

ALL VALVES TO BE ABANDONED IN THE CLOSED POSITION, UNLESS OTHERWISE BY REMOVING A MINIMUM OF THE TOP 12 INCHES OF THE VALVE BOX AND THEN FILLING THE REMAINING PORTION OF THE VALVE BOX WITH CONCRETE HAVING A COMPRESSIVE STRENGTH OF AT LEAST 2,000 PSI.

THE CONTRACTOR SHALL CUT THE EXISTING PIPE 3" BEYOND THE ABANDONED VALVE AND INSTALL A CAP WHERE A JOINT OR COUPLING IN THE EXISTING PIPE IS UNCOVERED AT THE CUT AND CAP LOCATION. THE INSTALLATION OF A PLUG MAY BE PERMITTED WITH DISTRICT APPROVAL. THE CONTRACTOR SHALL INSTALL A CONCRETE THRUST BLOCK IN ACCORDANCE WITH THE PROVISIONS OF THE UDACS PLATE NO. 5 AT ALL CAP OR PLUG LOCATIONS.

REDUCED PRESSURE PRINCIPLE ASSEMBLY (2) 8"

APPROVED REDUCED PRESSURE PRINCIPLE ASSEMBLY(S) SHALL BE INSTALLED PER THE UDACS PLATE NO. 118. NO WATER SHALL BE TAKEN FROM A SERVICE REQUIRING BACKFLOW PREVENTION UNTIL THE REDUCED PRESSURE PRINCIPLE ASSEMBLY HAS BEEN SUCCESSFULLY TESTED BY THE LVWD.

ANY BLOCK WALL OR OTHER FENCE MATERIAL SHALL BE DESIGNED AND CONSTRUCTED AROUND THE OUTSIDE OF THE EASEMENT(S) TO ALLOW DISTRICT DIRECT ACCESS FROM THE ADJACENT RIGHT-OF-WAY.

CITY OF LAS VEGAS FIRE DEPARTMENT FIRE FLOW DATA

TYPE OF CONSTRUCTION	V-N
NO. OF STORES	2
TOTAL FLOOR AREA (SQ.FT.)	4,857 sq.ft.
LARGEST SUCCESSIVE FLOOR AREA	4,558 sq.ft.
ESTIMATED FIRE FLOW	1750 GPM
BUILDING HEIGHT	38'
SPRINKLED	NO

REVIEWED & VERIFIED BY: _____ DATE: _____
 CLV FIRE DEPT. AS TO DATA & REQUIREMENTS

BENCHMARK

CITY OF LAS VEGAS BENCHMARK
 OL0001954 RIVT & PLATE IN TOP OF CURB NW SIDE OF TOWN CENTER DRIVE & SOUTH CIRCLE ISLAND

2725.923 NGVD 1929 DATUM
 2718.37 NAVD 1988 DATUM (831.6074 M)
 2726.19 SUMMERLIN DATUM

BASIS OF BEARING

NORTH 15°23'46" EAST BEING THE BEARING OF THE CENTERLINE OF ANAZAZI DRIVE AS SHOWN BY MAP THEREON ON FILE IN BOOK 74, PAGE 70 OF PLATS IN THE CLARK COUNTY RECORDER'S OFFICE, CLARK COUNTY NEVADA

SEE SHEET C6, DRAWING NO. 6 FOR ESTIMATED UTILITY QUANTITIES

LOTS WITH BACKWATER VALVES

THE FOLLOWING LOTS REQUIRE SEWER BACKWATER VALVES

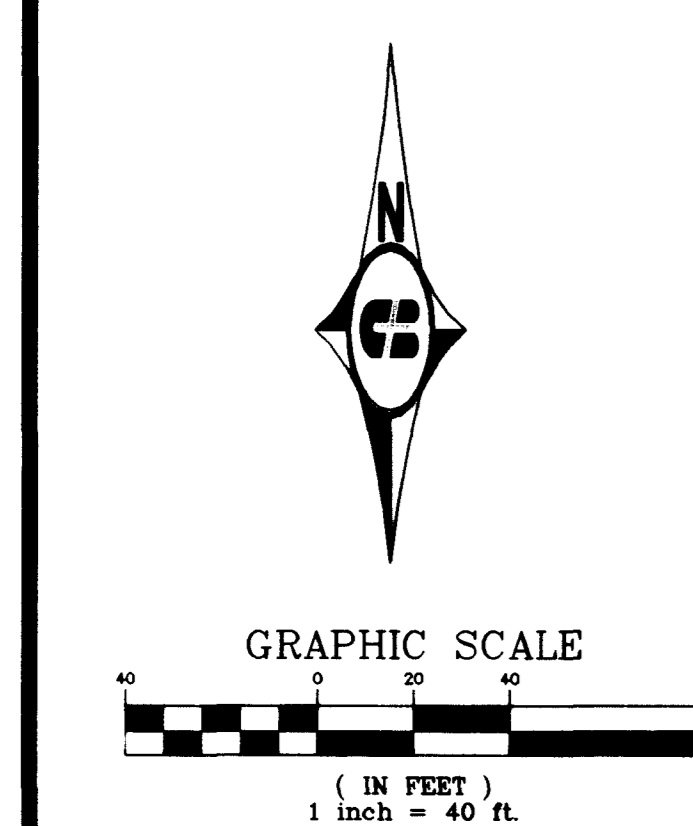
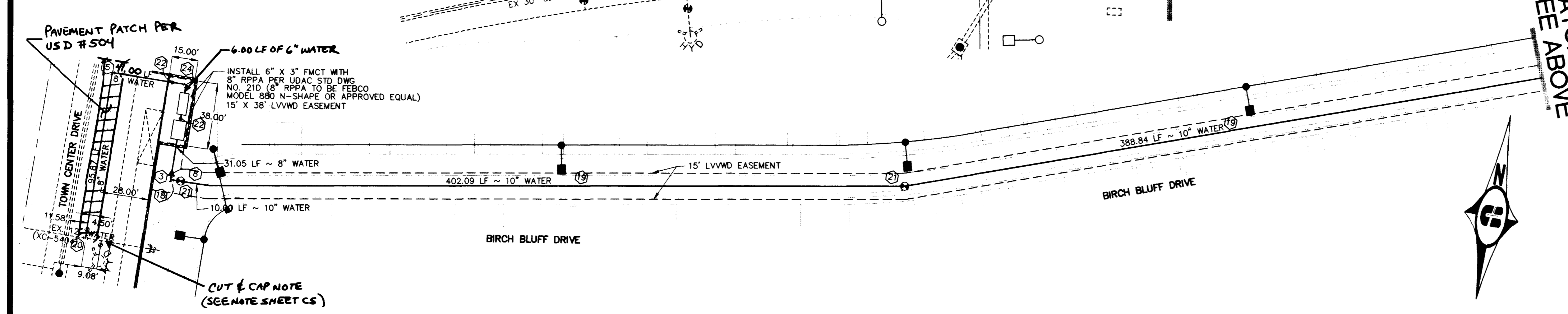
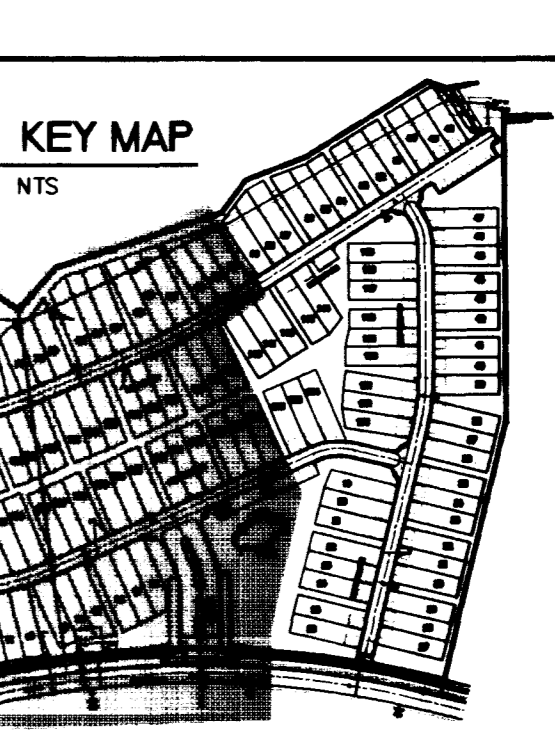
LOTS: 10-12, 17, 18, 41-46, 52-61, 65-70, 73, 74, 126-128, 313-317, 141-148, 155, 156

DISCLAIMER NOTE:

UTILITY LOCATIONS SHOWN HEREON ARE APPROXIMATE ONLY. IT SHALL BE THE CONTRACTOR'S RESPONSIBILITY TO DETERMINE THE EXACT HORIZONTAL AND VERTICAL LOCATION OF ALL EXISTING UNDERGROUND OR OVERHEAD UTILITIES PRIOR TO COMMENCING CONSTRUCTION. NO REPRESENTATION IS MADE THAT ALL EXISTING UTILITIES ARE SHOWN HEREON. THE ENGINEER ASSUMES NO RESPONSIBILITY FOR UTILITIES NOT SHOWN OR UTILITIES NOT SHOWN IN THEIR PROPER LOCATION. CONTRACTOR TO NOTIFY ENGINEER OF ANY CHANGES OR DISCREPANCIES.

Call before you Dig
 1-800-227-2600
 UNDERGROUND SERVICE (USG)

Call before you Overhead
 1-702-593-6111
 OVERHEAD POWER (OP) AND SAFETY SERVICES DEPARTMENT



Pulte Homes CORPORATION
 1835 Village Center Circle, Suite 250
 Las Vegas, Nevada 89134
 (702) 256-7900

Cartier Burgess
 2955 East Sunset Road, Suite 105
 Las Vegas, NV 89120
 (702) 798-1007 Fax (702) 798-7056

UTILITY PLAN

COTTONWOOD TERRACE PHASE I

DRAWN BY: JMR
 DESIGNED BY: ES
 CHECKED BY: JBT
 PROJECT NO.: 89V06010
 SCALE: 1"=40'
 SHEET: C6
 6 OF 10 SHEETS
 DRAWING NO.: 307Y-4596-1

REVISION:

