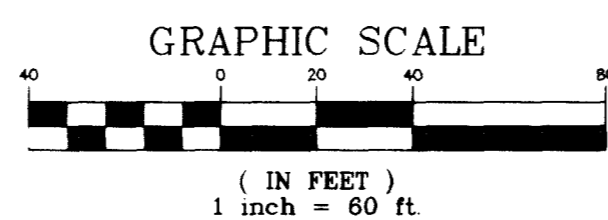
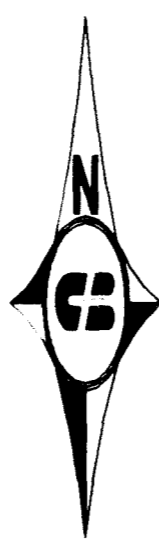


DISCLAIMER NOTE:

UTILITY LOCATIONS SHOWN HEREON ARE APPROXIMATE ONLY. IT SHALL BE THE CONTRACTOR'S RESPONSIBILITY TO DETERMINE THE EXACT HORIZONTAL AND VERTICAL LOCATION OF ALL EXISTING UNDERGROUND OR OVERHEAD UTILITIES PRIOR TO COMMENCING CONSTRUCTION. NO REPRESENTATION IS MADE THAT ALL EXISTING UTILITIES ARE SHOWN HEREON. THE ENGINEER ASSUMES NO RESPONSIBILITY FOR UTILITIES NOT SHOWN OR UTILITIES NOT SHOWN IN THEIR PROPER LOCATION. CONTRACTOR TO NOTIFY ENGINEER OF ANY CHANGES OR DISCREPANCIES.

Avoid cutting underground utility lines. It's costly.
Call you before Dig
UNDERGROUND SERVICE (USA)

Avoid overhead power line contact.
Call you Overhead
NEVADA POWER ENVIRONMENT AND SAFETY SERVICES DEPARTMENT



ABANDON CUT AND CAP

THE CONTRACTOR SHALL CUT THE EXISTING PIPE 3'-4' BEYOND THE EX. 12" X 6" TEE AND INSTALL A CAP WHERE A JOINT OR COUPLING IN THE EXISTING PIPE IS UNCOVERED AT THE CUT AND CAP LOCATION. THE INSTALLATION OF A PLUG MAY BE PERMITTED WITH DISTRICT APPROVAL. THE CONTRACTOR SHALL INSTALL A CONCRETE THRUST BLOCK IN ACCORDANCE WITH THE PROVISIONS OF THE UDASC PLATE No. 5 AT ALL CAP OR PLUG LOCATIONS.

NOTE:

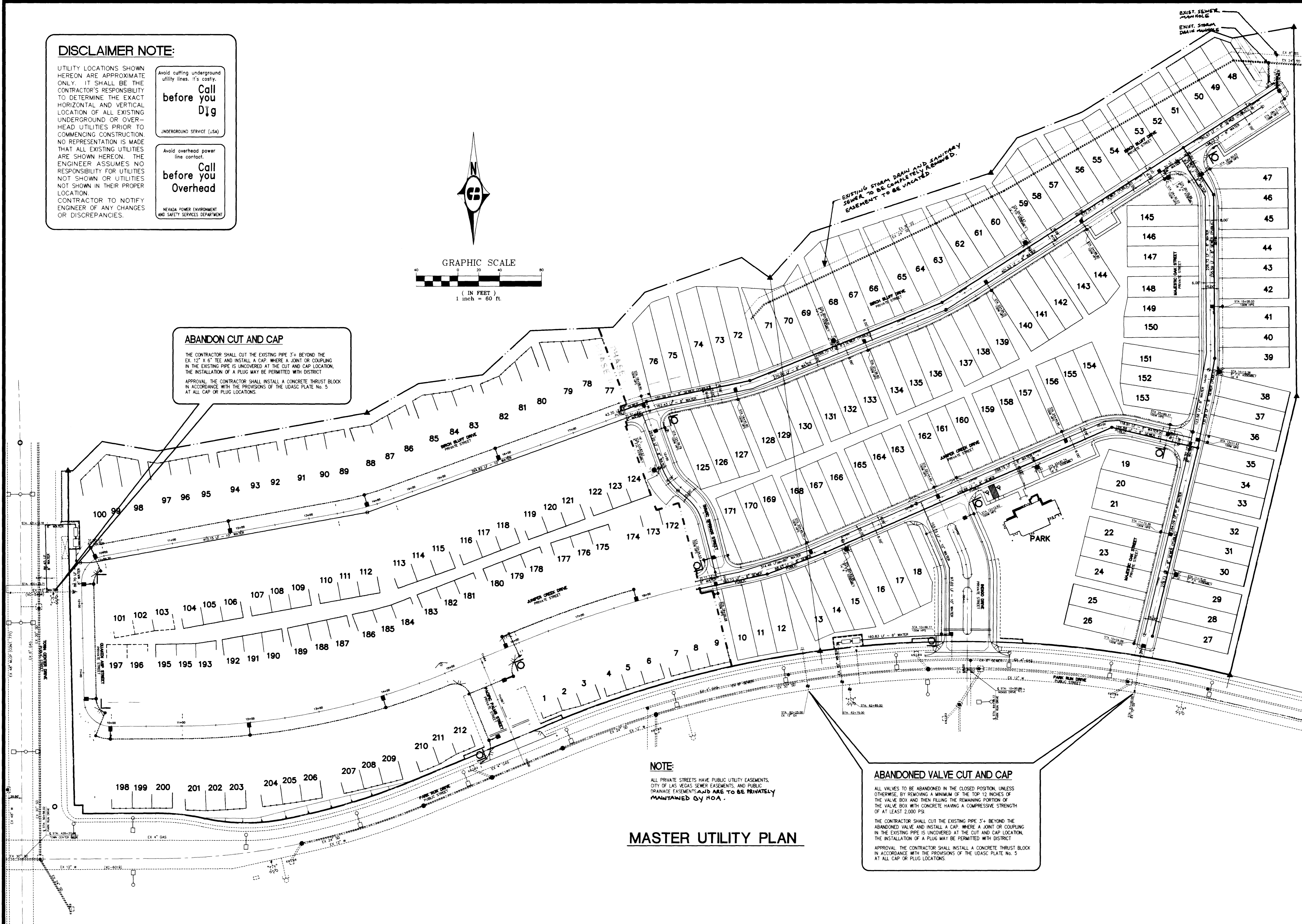
ALL PRIVATE STREETS HAVE PUBLIC UTILITY EASEMENTS, CITY OF LAS VEGAS SEWER EASEMENTS, AND PUBLIC DRAINAGE EASEMENTS AND ARE TO BE PRIVATELY MAINTAINED BY HOA.

ABANDONED VALVE CUT AND CAP

ALL VALVES TO BE ABANDONED IN THE CLOSED POSITION, UNLESS OTHERWISE BY REMOVING A MINIMUM OF THE TOP 12 INCHES OF THE VALVE BOX AND THEN FILLING THE REMAINING PORTION OF THE VALVE BOX WITH CONCRETE HAVING A COMPRESSIVE STRENGTH OF AT LEAST 2,000 PSI.

THE CONTRACTOR SHALL CUT THE EXISTING PIPE 3'-4' BEYOND THE ABANDONED VALVE AND INSTALL A CAP WHERE A JOINT OR COUPLING IN THE EXISTING PIPE IS UNCOVERED AT THE CUT AND CAP LOCATION. THE INSTALLATION OF A PLUG MAY BE PERMITTED WITH DISTRICT APPROVAL. THE CONTRACTOR SHALL INSTALL A CONCRETE THRUST BLOCK IN ACCORDANCE WITH THE PROVISIONS OF THE UDASC PLATE No. 5 AT ALL CAP OR PLUG LOCATIONS.

MASTER UTILITY PLAN



<p>Pulte Homes An American Favorite</p>	
<p>Pulte Homes CORPORATION 1635 Village Center Circle, Suite 250 Las Vegas, Nevada 89154 (702) 256-7000</p>	
<p>CS Carter Burgess 2865 East Sunset Road, Suite 105 Las Vegas, NV 89120 Consultants in Planning, Engineering, Architecture, Construction Management, and Related Services (702) 798-1007 Fax (702) 798-7056</p>	
<p>MASTER UTILITY PLAN</p>	
<p>COTTONWOOD TERRACE PHASE I</p>	
<p>DRAWN BY: DMR</p>	<p>DESIGNED BY: ES</p>
<p>CHECKED BY: SJT</p>	<p>PROJECT NO: 96V066010</p>
<p>SCALE: 1"=50'</p>	<p>HORIZ VERT N/A</p>
<p>1/6/99</p>	
<p>SHEET C5</p>	
<p>5 OF 19 SHEETS</p>	
<p>DRAWING NO. 3074-4596-1</p>	

DISCLAIMER NOTE:

THIS PLAN IS A PRELIMINARY DESIGN AND IS NOT TO BE USED FOR CONSTRUCTION. THE DESIGNER ASSUMES NO LIABILITY FOR ANY ERRORS OR OMISSIONS. THE USER OF THIS PLAN SHALL BE RESPONSIBLE FOR OBTAINING ALL NECESSARY PERMITS AND FOR VERIFYING THE ACCURACY OF ALL DATA AND INFORMATION PROVIDED TO THE DESIGNER.

DATE: 02/15/2011
BY: [Signature]
CHECKED BY: [Signature]
SCALE: AS SHOWN
PROJECT NO: [Number]



APPROXIMATE LOCATION OF
~~EXISTING UTILITY~~
FUTURE UTILITY

SEE
~~SECTION~~
MASTER UTILITY PLAN

APPROXIMATE LOCATION OF
~~EXISTING UTILITY~~
FUTURE UTILITY

PROJECT NO.	DATE	SCALE	BY	CHECKED
UTILITY PLAN	02/15/2011	AS SHOWN	[Signature]	[Signature]
CUSTOMER NAME	ADDRESS	CITY	STATE	ZIP
CONTRACT NO.	PROJECT NO.	DATE	BY	CHECKED
123456789	987654321	02/15/2011	[Signature]	[Signature]