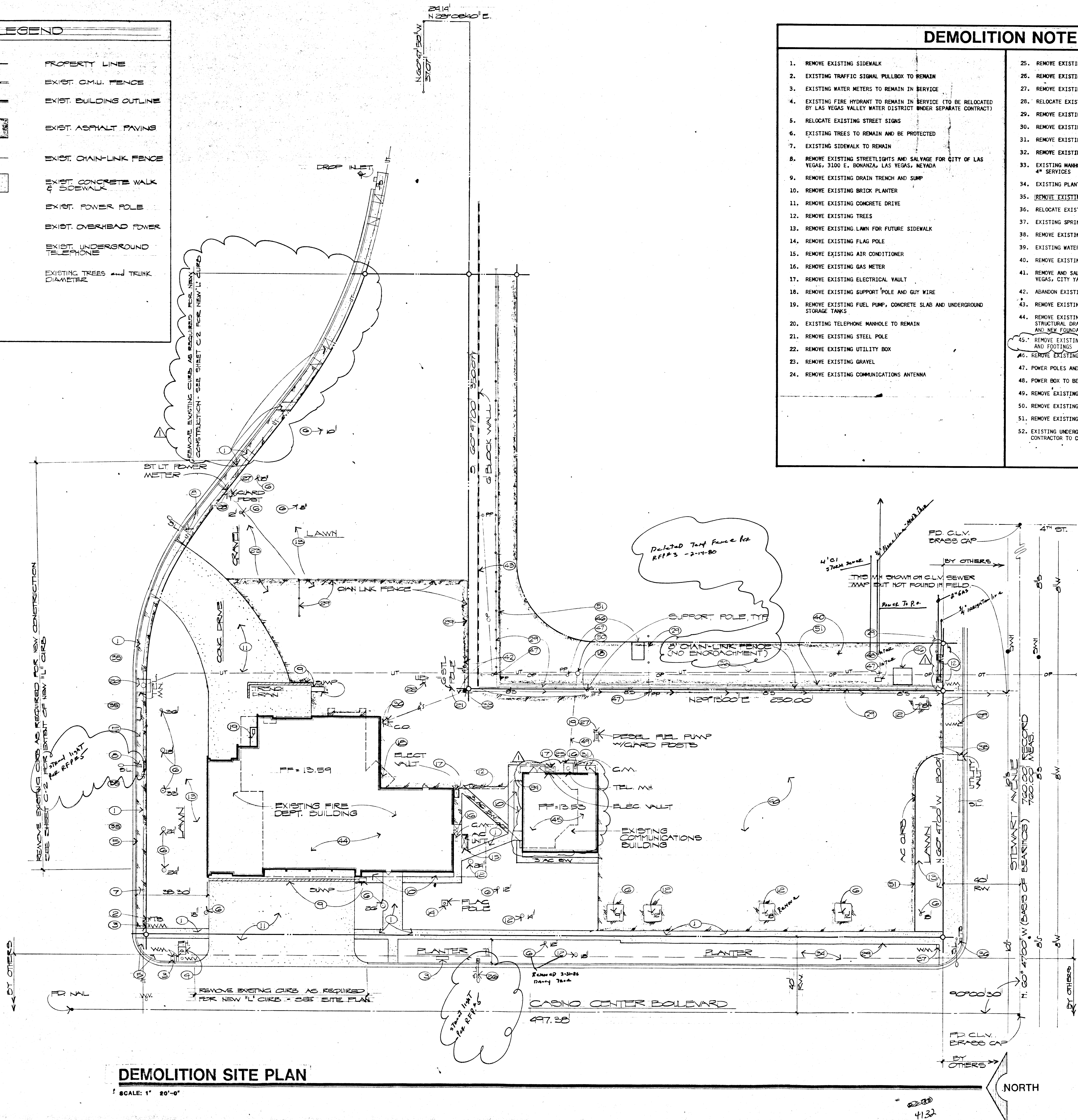


LEGEND	
---	PROPERTY LINE
---	EXIST. C.M.U. FENCE
---	EXIST. BUILDING OUTLINE
---	EXIST. ASPHALT PAVING
---	EXIST. CHAIN-LINK FENCE
---	EXIST. CONCRETE WALK SIDEWALK
PP	EXIST. POWER POLE
OP	EXIST. OVERHEAD POWER
UT	EXIST. UNDERGROUND TELEPHONE
○ 12"	EXISTING TREES and TRUNK DIAMETER

DEMOLITION NOTES	
1. REMOVE EXISTING SIDEWALK	25. REMOVE EXISTING TELEPHONE MANHOLE
2. EXISTING TRAFFIC SIGNAL PULLBOX TO REMAIN	26. REMOVE EXISTING STREETLIGHT (BY OTHERS)
3. EXISTING WATER METERS TO REMAIN IN SERVICE	27. REMOVE EXISTING GUARD POSTS
4. EXISTING FIRE HYDRANT TO REMAIN IN SERVICE (TO BE RELOCATED BY LAS VEGAS VALLEY WATER DISTRICT UNDER SEPARATE CONTRACT)	28. RELOCATE EXISTING STREETLIGHT POWER METER
5. RELOCATE EXISTING STREET SIGNS	29. REMOVE EXISTING CHAIN LINK FENCE
6. EXISTING TREES TO REMAIN AND BE PROTECTED	30. REMOVE EXISTING CLEANOUT BOX
7. EXISTING SIDEWALK TO REMAIN	31. REMOVE EXISTING CONCRETE STOOP
8. REMOVE EXISTING STREETLIGHTS AND SALVAGE FOR CITY OF LAS VEGAS, 3100 E. BONANZA, LAS VEGAS, NEVADA	32. REMOVE EXISTING CONCRETE PATIO
9. REMOVE EXISTING DRAIN TRENCH AND SUMP	33. EXISTING MANHOLE TO REMAIN, ADJUST TO GRADE AND PLUG EXISTING 4" SERVICES
10. REMOVE EXISTING BRICK PLANTER	34. EXISTING PLANTS AND PLANTER TO BE REMOVED BY OTHERS
11. REMOVE EXISTING CONCRETE DRIVE	35. REMOVE EXISTING CONCRETE CURB
12. REMOVE EXISTING TREES	36. RELOCATE EXISTING TRAFFIC SIGNAL PULL BOX (BY OTHERS)
13. REMOVE EXISTING LAMN FOR FUTURE SIDEWALK	37. EXISTING SPRINKLER VALVE BOX TO REMAIN
14. REMOVE EXISTING FLAG POLE	38. REMOVE EXISTING UTILITY VAULT (BY OTHERS)
15. REMOVE EXISTING AIR CONDITIONER	39. EXISTING WATER METER (BY OTHERS)
16. REMOVE EXISTING GAS METER	40. REMOVE EXISTING A.C. PAVING DRIVE
17. REMOVE EXISTING ELECTRICAL VAULT	41. REMOVE AND SALVAGE ALL LOCKS AND LOCKSETS FOR CITY OF LAS VEGAS, CITY YARD, 3100 E. BONANZA, LAS VEGAS, NEVADA
18. REMOVE EXISTING SUPPORT POLE AND GUY WIRE	42. ABANDON EXISTING 4" SANITARY SEWER SERVICES
19. REMOVE EXISTING FUEL PUMP, CONCRETE SLAB AND UNDERGROUND STORAGE TANKS	43. REMOVE EXISTING 6" C.M.U. WALL
20. EXISTING TELEPHONE MANHOLE TO REMAIN	44. REMOVE EXISTING STRUCTURES ABOVE EXISTING FLOOR SLABS. SEE STRUCTURAL DRAWINGS FOR EXISTING FLOOR SLAB REQUIREMENTS AND NEW FOUNDATION DETAILS
21. REMOVE EXISTING STEEL POLE	45. REMOVE EXISTING STRUCTURE INCLUDING UNDERGROUND TRENCHES AND FOOTINGS
22. REMOVE EXISTING UTILITY BOX	46. REMOVE EXISTING STORAGE
23. REMOVE EXISTING GRAVEL	47. POWER POLES AND OVERHEAD WIRES TO BE REMOVED BY OTHERS
24. REMOVE EXISTING COMMUNICATIONS ANTENNA	48. POWER BOX TO BE REMOVED BY OTHERS
	49. REMOVE EXISTING TELEPHONE LINE
	50. REMOVE EXISTING TELEPHONE MANHOLE
	51. REMOVE EXISTING ASPHALT CURB
	52. EXISTING UNDERGROUND TELEPHONE CABLE TO BE REMOVED BY CENTEL CONTRACTOR TO COORDINATE WITH CENTEL



**DEMOLITION SITE PLAN**

SCALE: 1" = 20'-0"

11-14-85 - ISSUED FOR APPROVAL

DATE	11-14-85
DRAWN	AL
CHECK	AL
DATE	11-14-85

**DOBUSKY KITTRELL GARLOCK**  
Architects  
1000 CAMBRIDGE ST. LAS VEGAS, NEVADA 89102 (702) 733-0485

City of Las Vegas  
Transportation Center  
Las Vegas, Nevada

**A-I**  
1001 6th St  
Las Vegas, NV 89101

11/14/85 4132