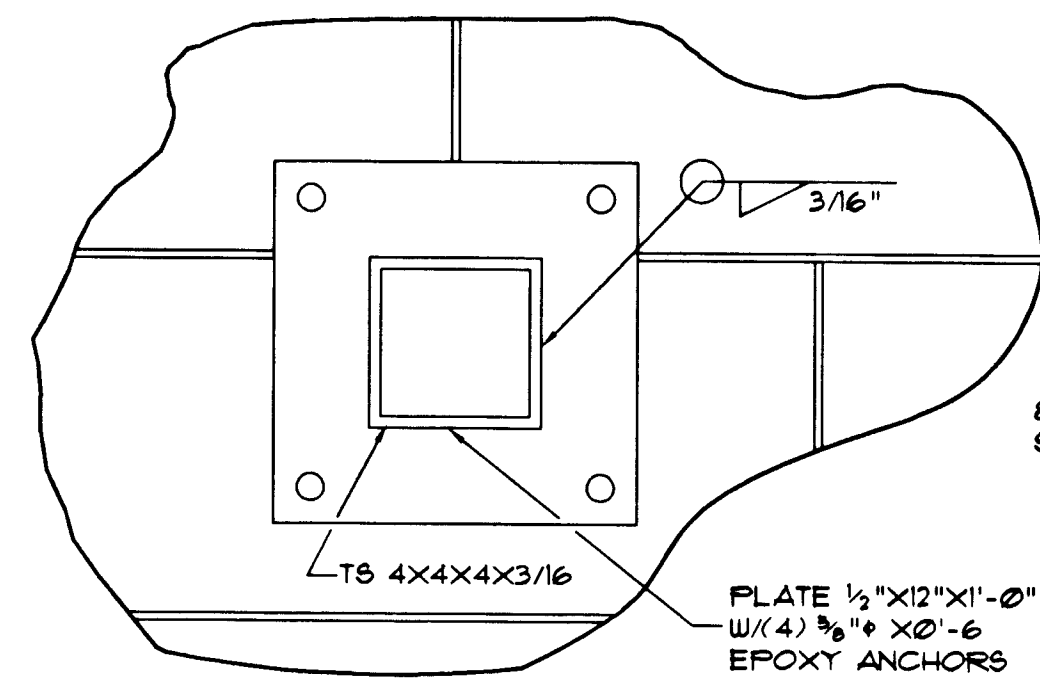


NOTE:
 PROVIDE A 24" WIDE X 8" THICK X 3'-0" LONG
 FULLY GROUTED AREA • SUPPORT
 PROVIDE (2) 5X3'-0" • EACH COURSE

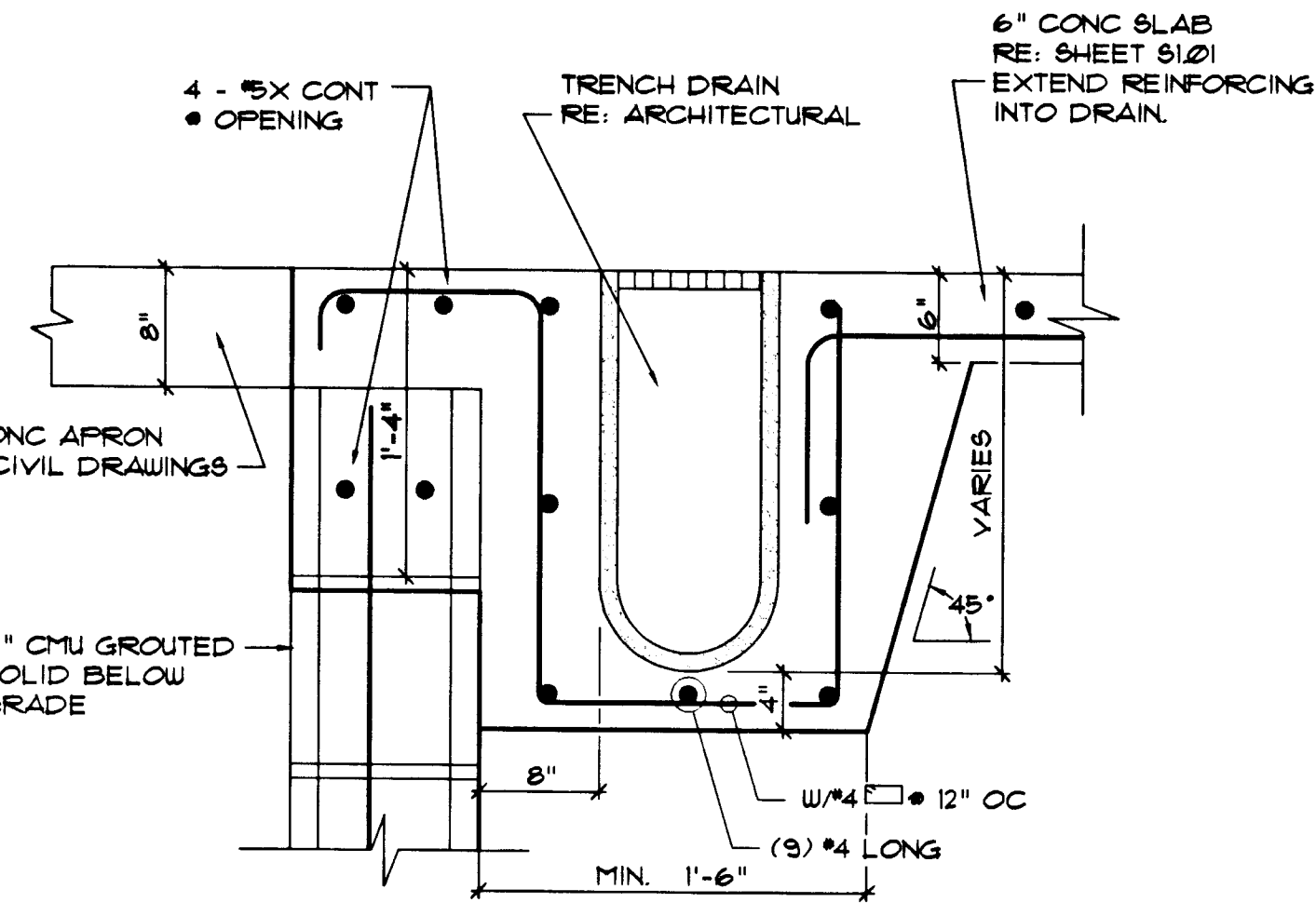
DETAIL 1
 NTA 5/1/09

DETAIL NOT USED

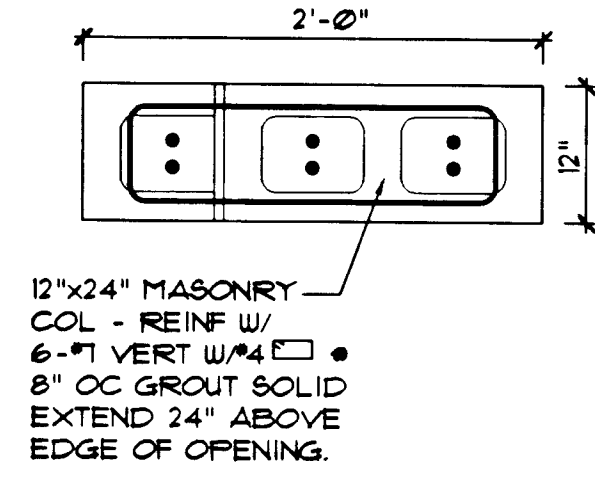


NOTE:
 PROVIDE A 24" HIGH X 8" WIDE X 3'-0"
 LONG FULLY GROUTED AREA • SUPPORT
 PROVIDE (2) 5X3'-0" • EACH COURSE

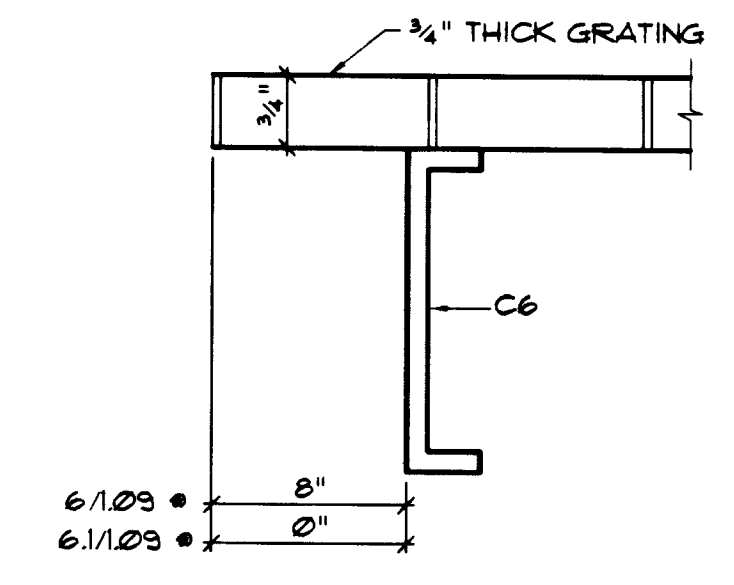
DETAIL 2
 NTA 5/1/09



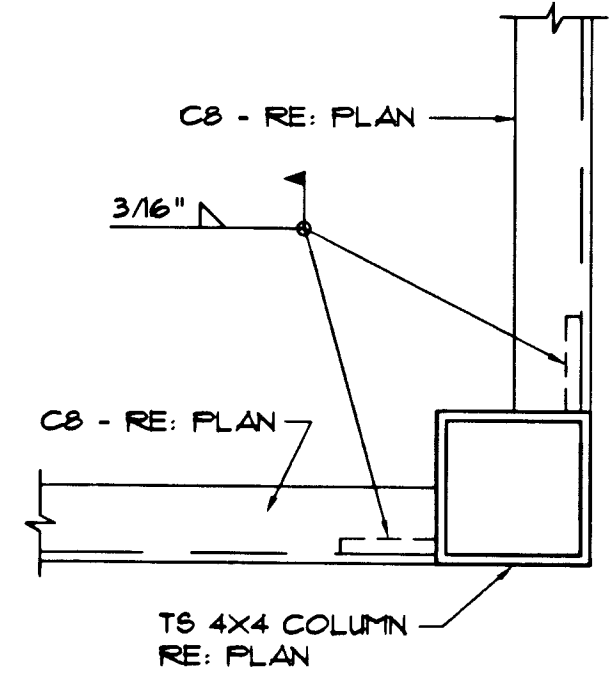
DETAIL AT DRAIN 3
 NTA 5/1/09



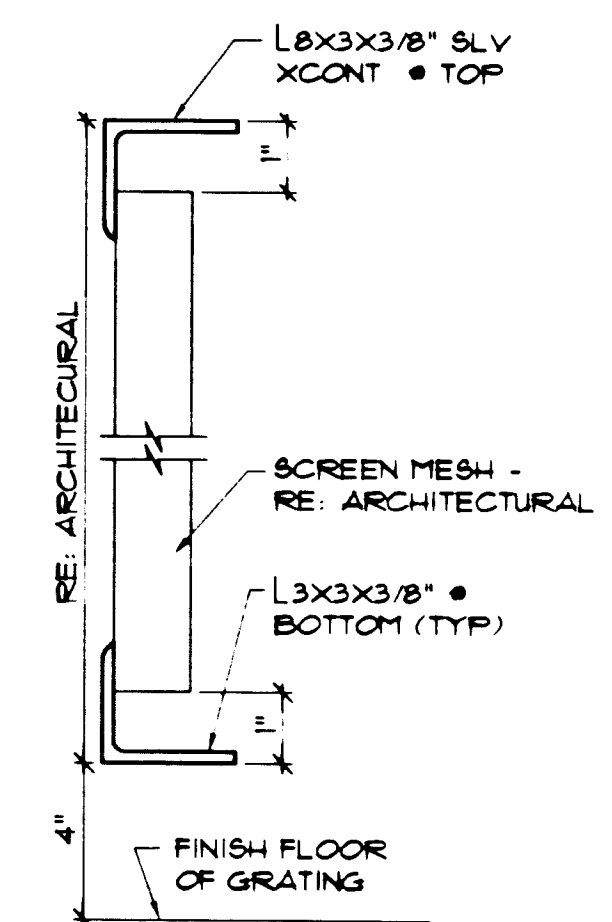
DETAIL AT 2'-0" X 12" COLUMN 4
 NTA 5/1/09



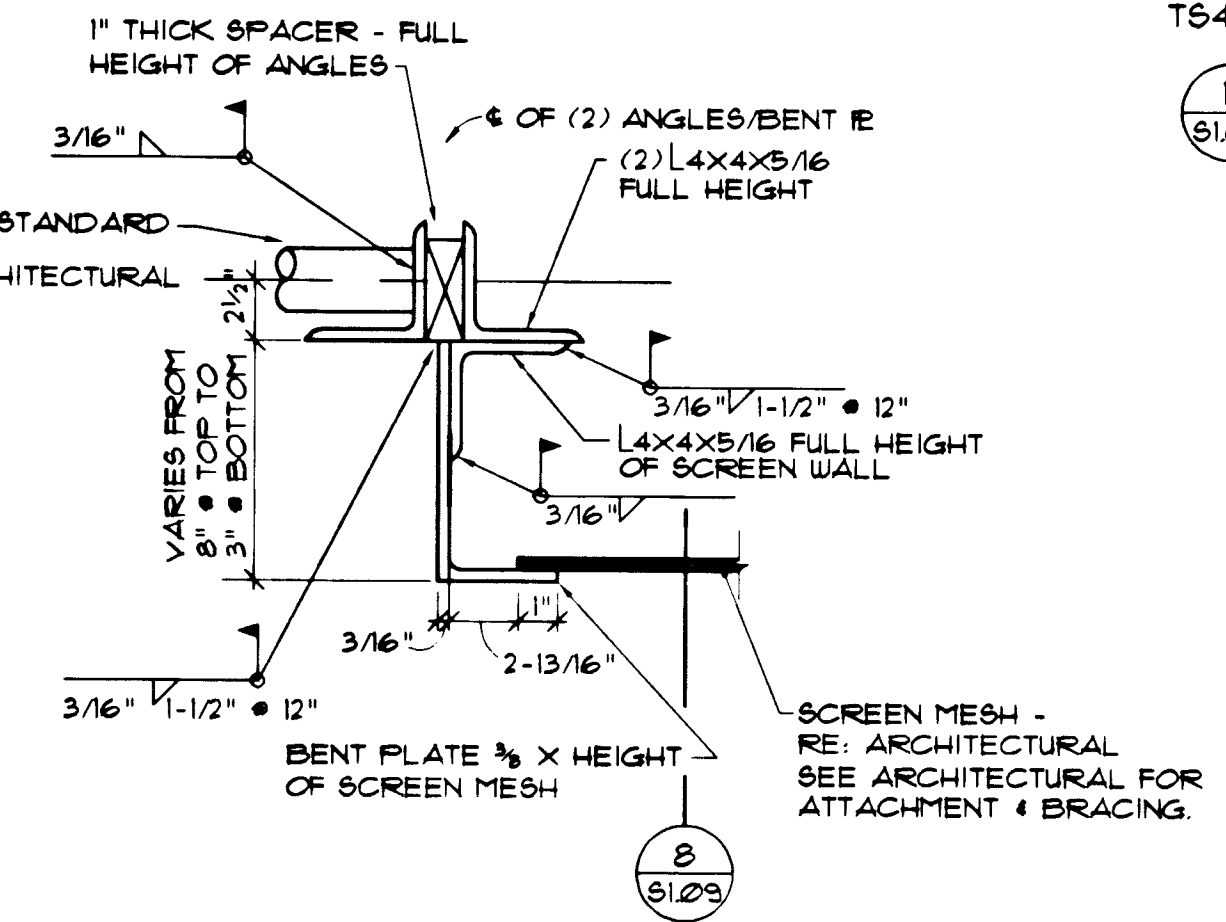
DETAIL 5
 NTA 5/1/09



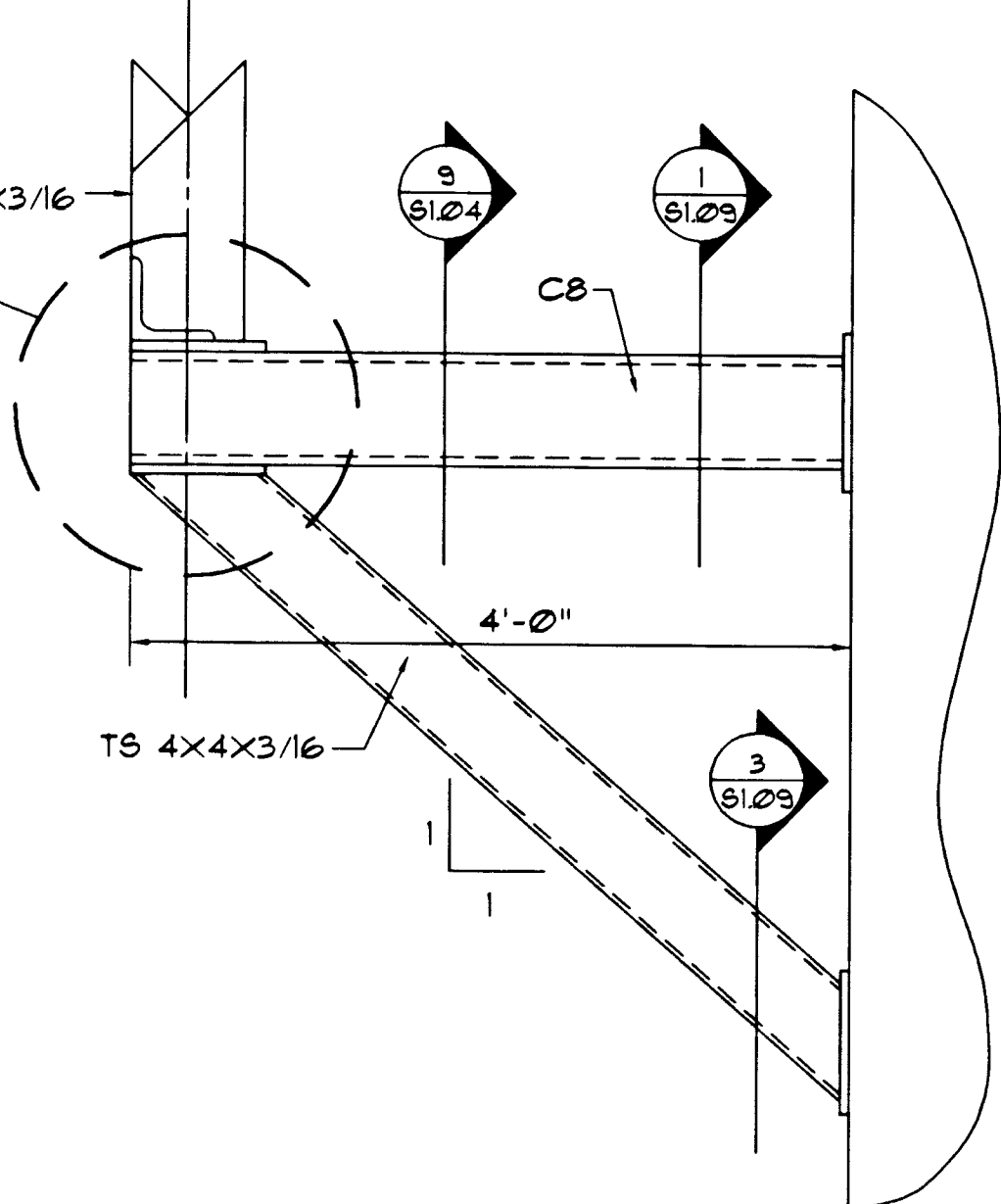
DRAG STRUT DETAIL 6
 NTA 5/1/09



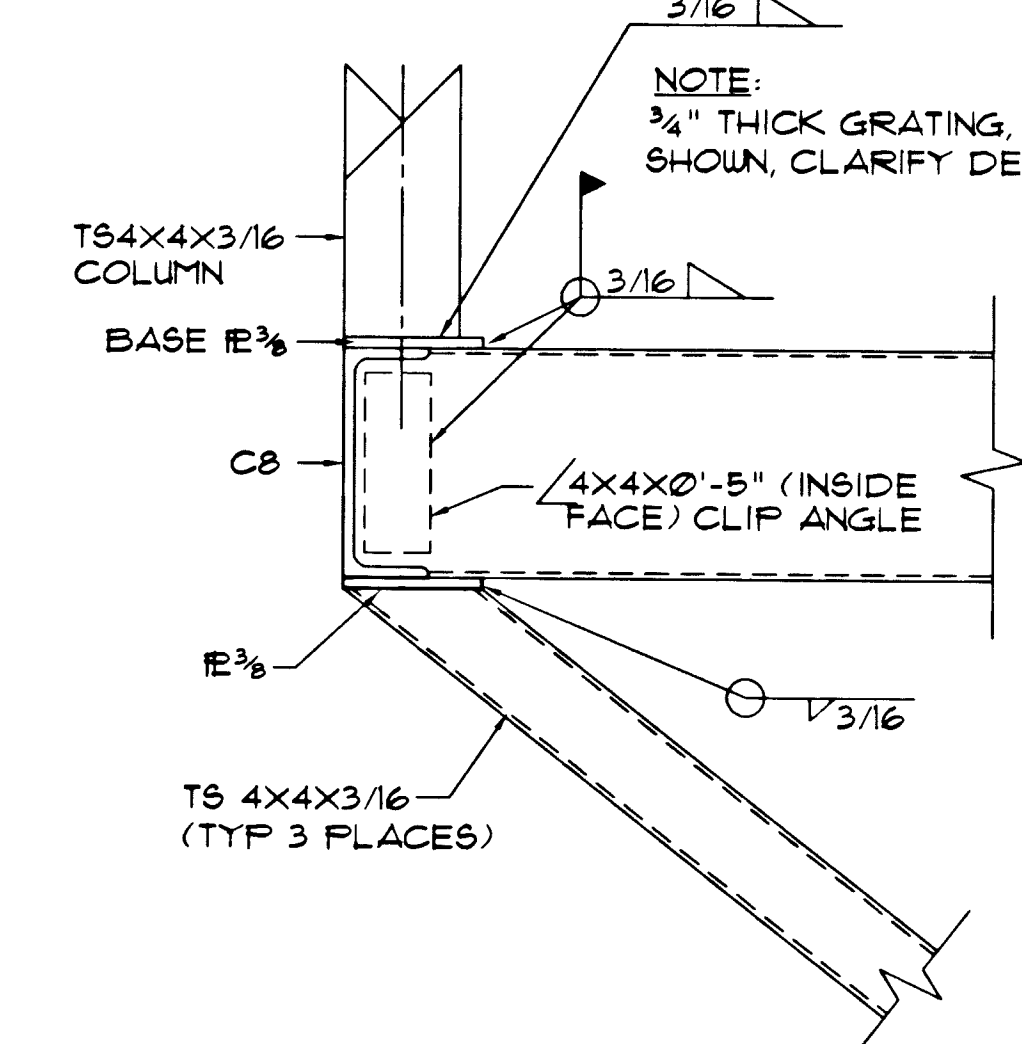
SCREEN WALL DETAIL 7
 NTA 5/1/09



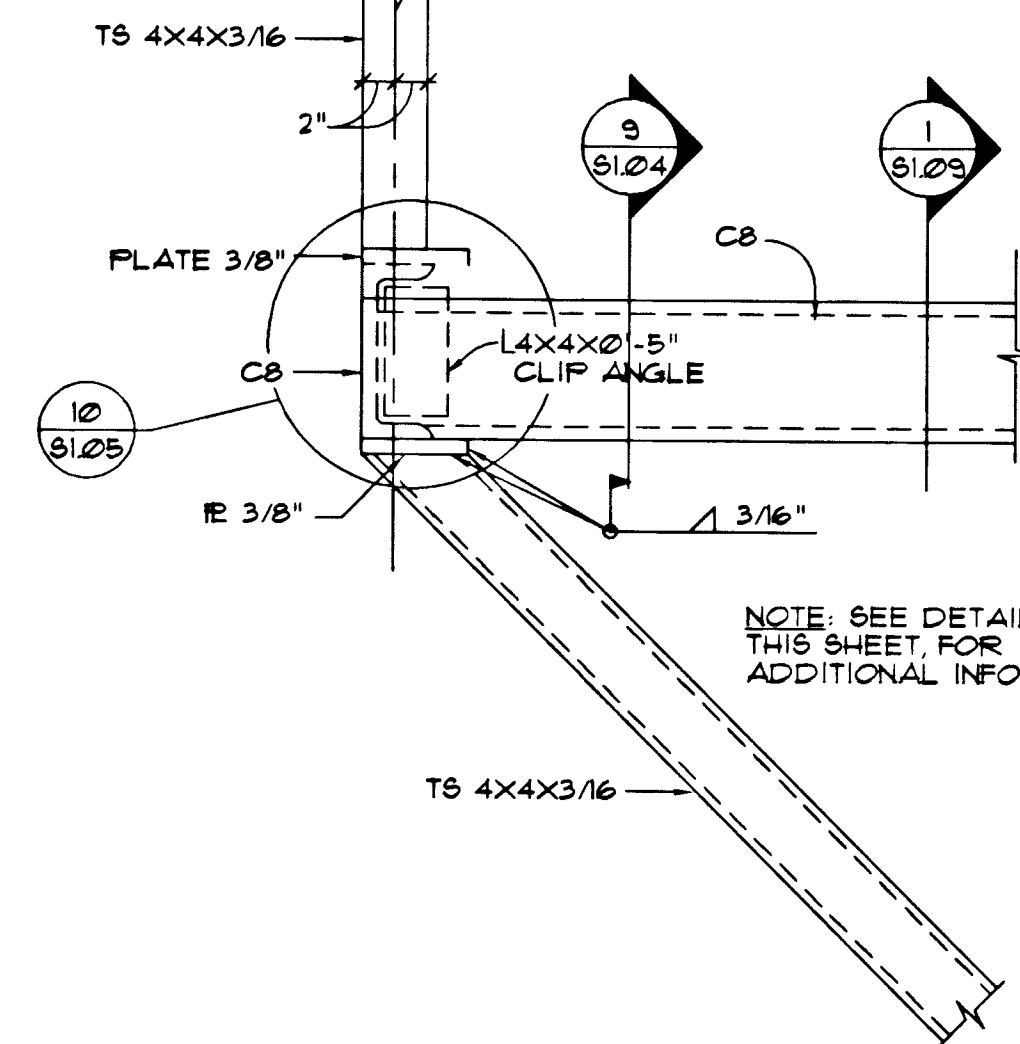
DETAIL 8
 NTA 5/1/09



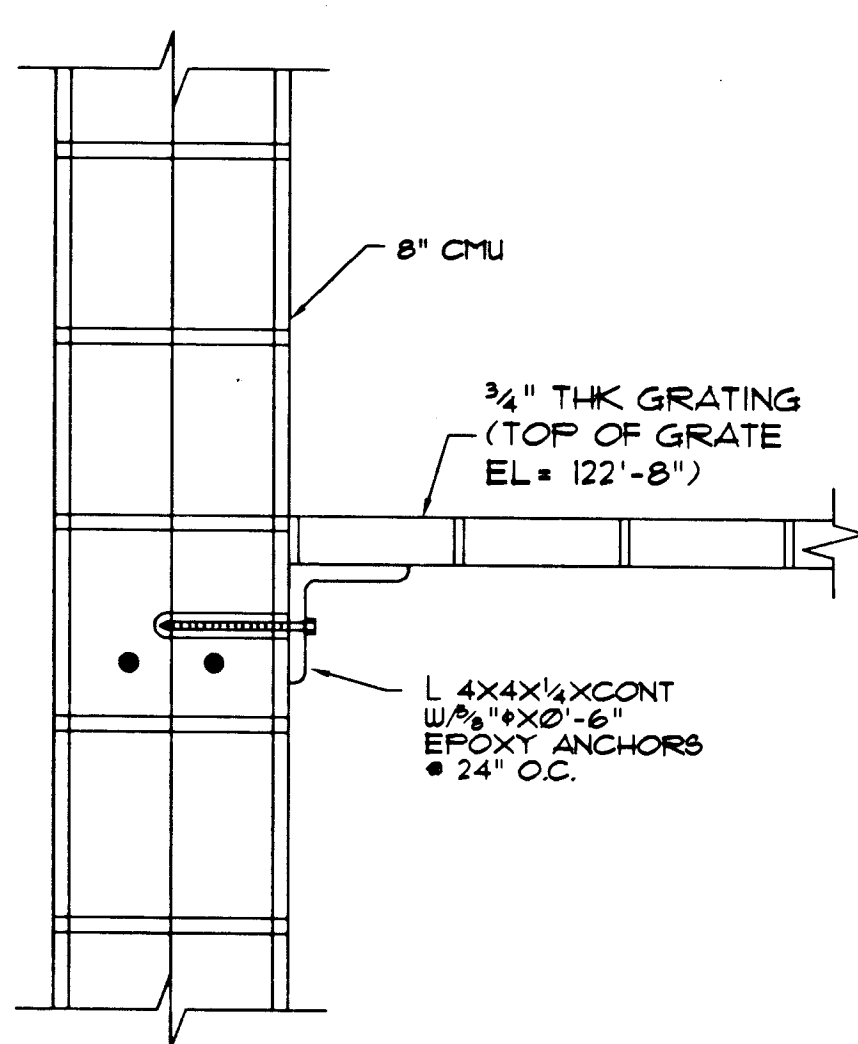
DETAIL 9
 NTA 5/1/09



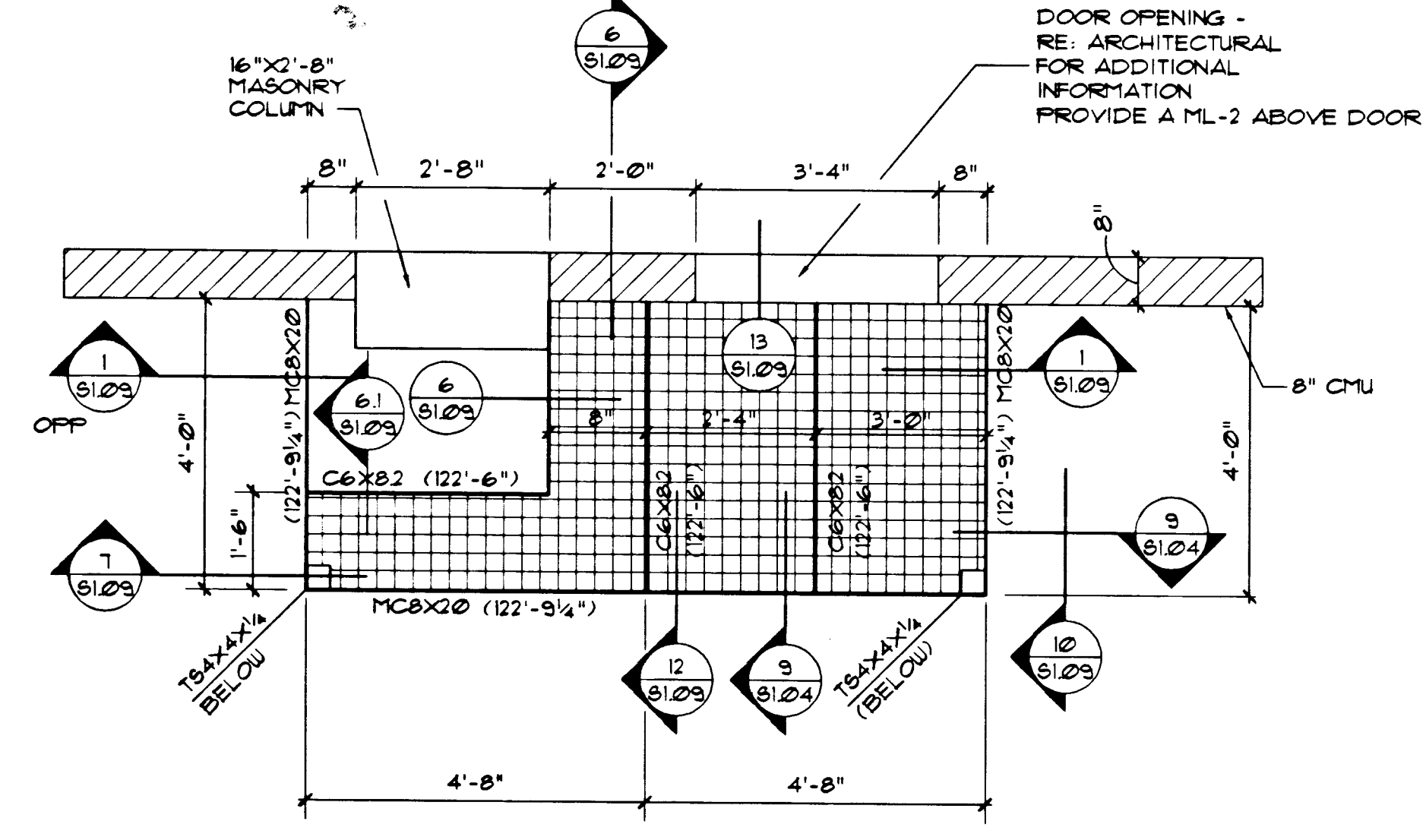
DETAIL 10
 NTA 5/1/09



DETAIL 11
 NTA 5/1/09



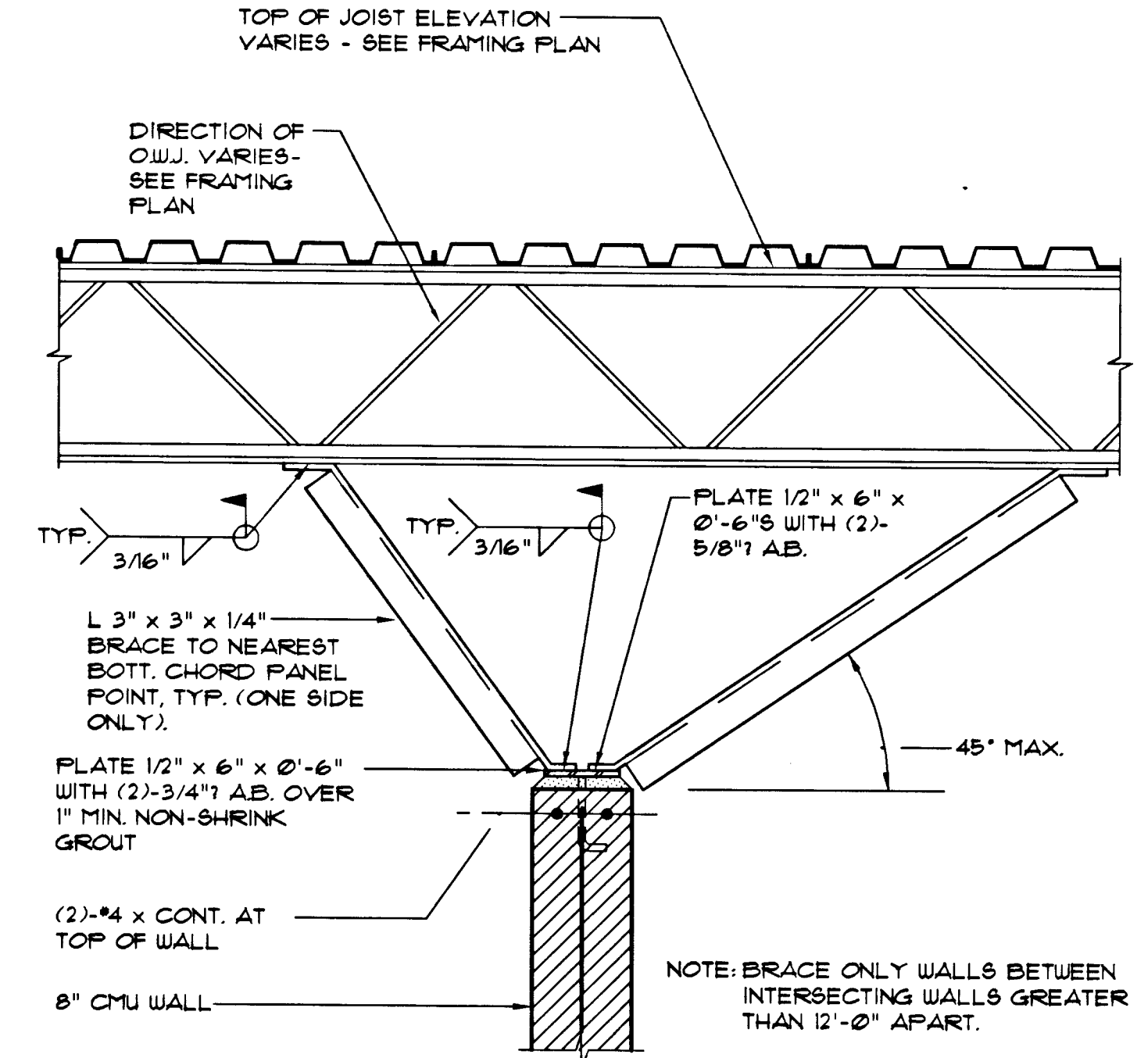
DETAIL 12
 NTA 5/1/09



NOTE:
 FOR LADDER SUPPORT - SEE
 ARCHITECTURAL DRAWINGS

NOTES:
 1. TOP OF FIN. FL. ELEV. = 122'-8"
 2. FIN. FL. TO BE 3/4" DEEP OPEN GRATING. GRATING
 TO BE MANUFACTURED BY MONICHO'S CO. TYPE
 GU-TB (3/4" x 3/16")
 3. TOP OF STEEL NOTED THUS (XXXI-X)
 4. SEE SHEET 9000 FOR GENERAL NOTES.
 5. AT ALL CONNECTIONS, PROVIDE SOLID GROUTED
 COURSES A MINIMUM OF 12" ON EACH SIDE OF
 CONNECTION.

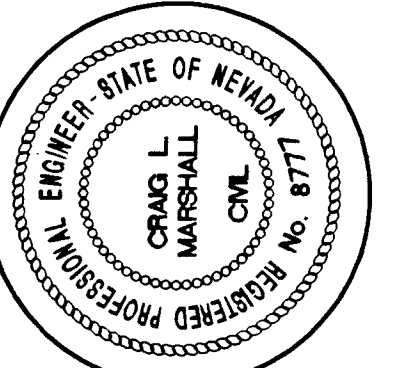
FRAMING PLAN - PLATFORM 13
 NTA 5/1/09



CMU WALL BRACED TO ROOF 14
 NTA 5/1/09

ARCHITECTS

709 Valle Verde Court
 Henderson, Nevada 89014
 Tel. 702.456.3000
 Fax. 702.898.6209



POGGEMEYER DESIGN GROUP
 2001 NORTH TENAYA WAY, LAS VEGAS, NEVADA 89102 (702) 395-8100

Sheet Title
DETAILS

Project
**CITY OF LAS VEGAS
 WEST VEHICLE SERVICE CENTER**

Revisions
 ISSUED FOR CONTRACTOR'S
 PREPARATION OF RECORD
 DRAWINGS

Date:
 09.05.05
 Sheet No. 30
5/109
 5-22-V61

SHEET PLOT SCALE:
 SHEET FILE NAME: 5106.DWG