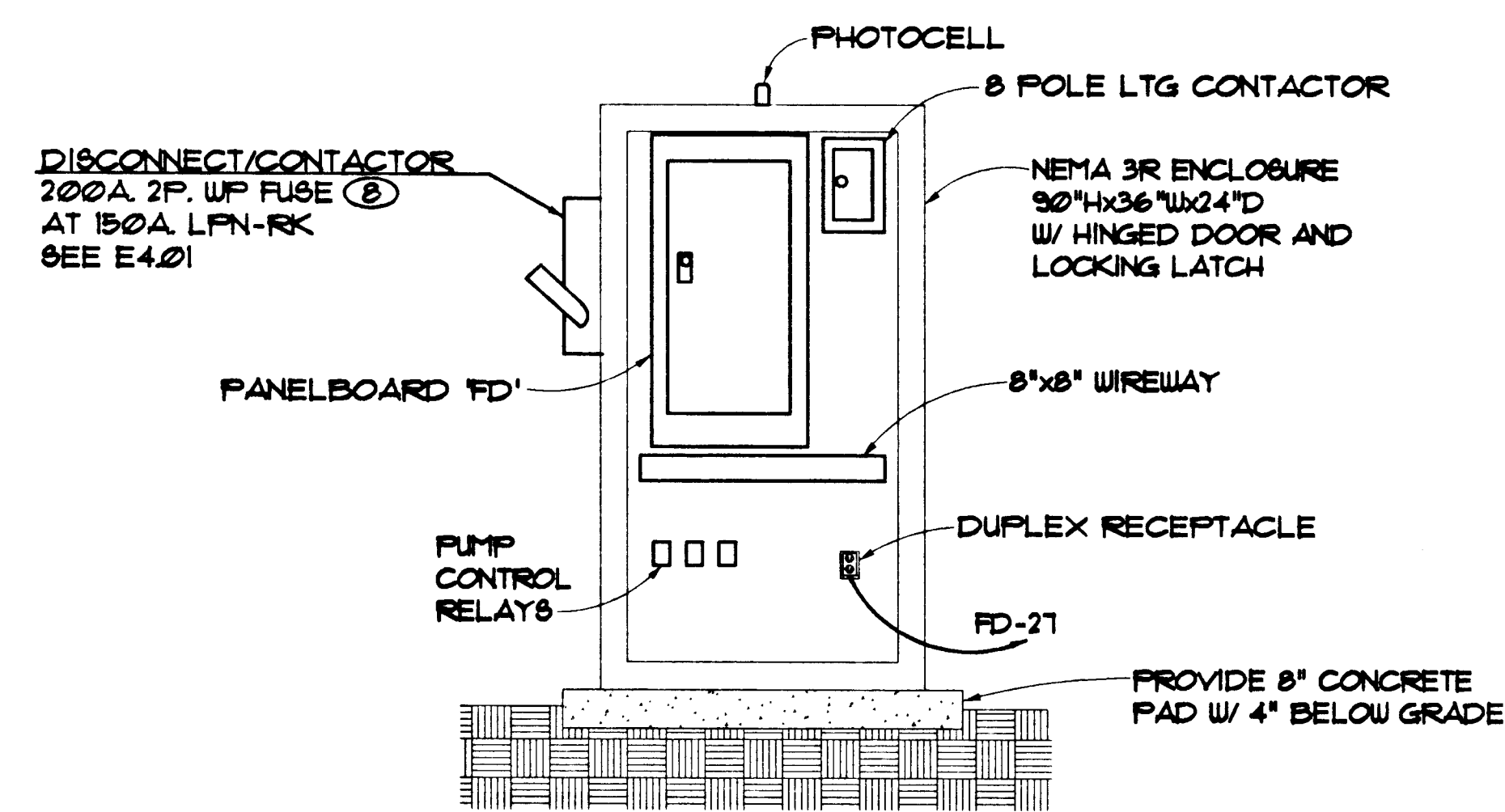


PANEL: FD		PANEL VOLTAGE: 240/120 1 ϕ 3 W		CIRCUIT CODE: 60kva or N : NON-CONTINUOUS	
DATE: 02/02/96 TIME: 07:58:52		MINS: 00		LOCATION: FREE STANDING ENCLOSURE	
JOB: 466		AIC RATING: 10,000		MOUNTING: SURFACE	
NO.	LOAD DESIGNATION	C O N N E C T E D V A		NO.	LOAD DESIGNATION
1	PUMP #1 (DIES)	400	400	1	GAS BOY 1A/7B
2	PUMP #2 (DIES)	600	600	2	GAS BOY 2A/2B/2C
3	PUMP #3 (GAS)	400	400	3	DISP 1A/1B
4	PUMP #4 (GAS)			4	SPARE
5	PUMP #5 (GAS)	2900	2900	5	DIES ISLE LGT
6	PUMP #6 (GAS)	910	910	6	GAS ISLE LGT
7	PUMP #7 (GAS)			7	DISP 2A/2B/2C
8	1 1/2 HP AIR COND			8	SPACE
9	RECEPT				
10	SPACE				
11					
12					
13					
14					
15					
16					
17					
18					
19					
20					
21					
22					
23					
24					
25					
26					
27					
28					
29					
30					
31					
32					
33					
34					
35					
36					
37					
38					
39					
40					
41					
42					
43					
44					
45					
46					
47					
48					
49					
50					
51					
52					
53					
54					
55					
56					
57					
58					
59					
60					
61					
62					
63					
64					
65					
66					
67					
68					
69					
70					
71					
72					
73					
74					
75					
76					
77					
78					
79					
80					
81					
82					
83					
84					
85					
86					
87					
88					
89					
90					
91					
92					
93					
94					
95					
96					
97					
98					
99					
100					
PANEL NOTES:		PHASE TOTALS: 8A: 5210	8B: 3990	TOTAL CONNECTED VA: 9200	
		CONNECTED VA (CODE N): 9200		CONNECTED VA (CODE L): 0	
		CONNECTED VA (CODE R): 0		CONNECTED VA (CODE K): 0	
		PANEL CONNECTED KVA: 9.2		PANEL DEMAND KVA: 9.2	
		PANEL DEMAND AMPS: 38.3		HIGH ϕ AMPS W/LCL: 43.4	



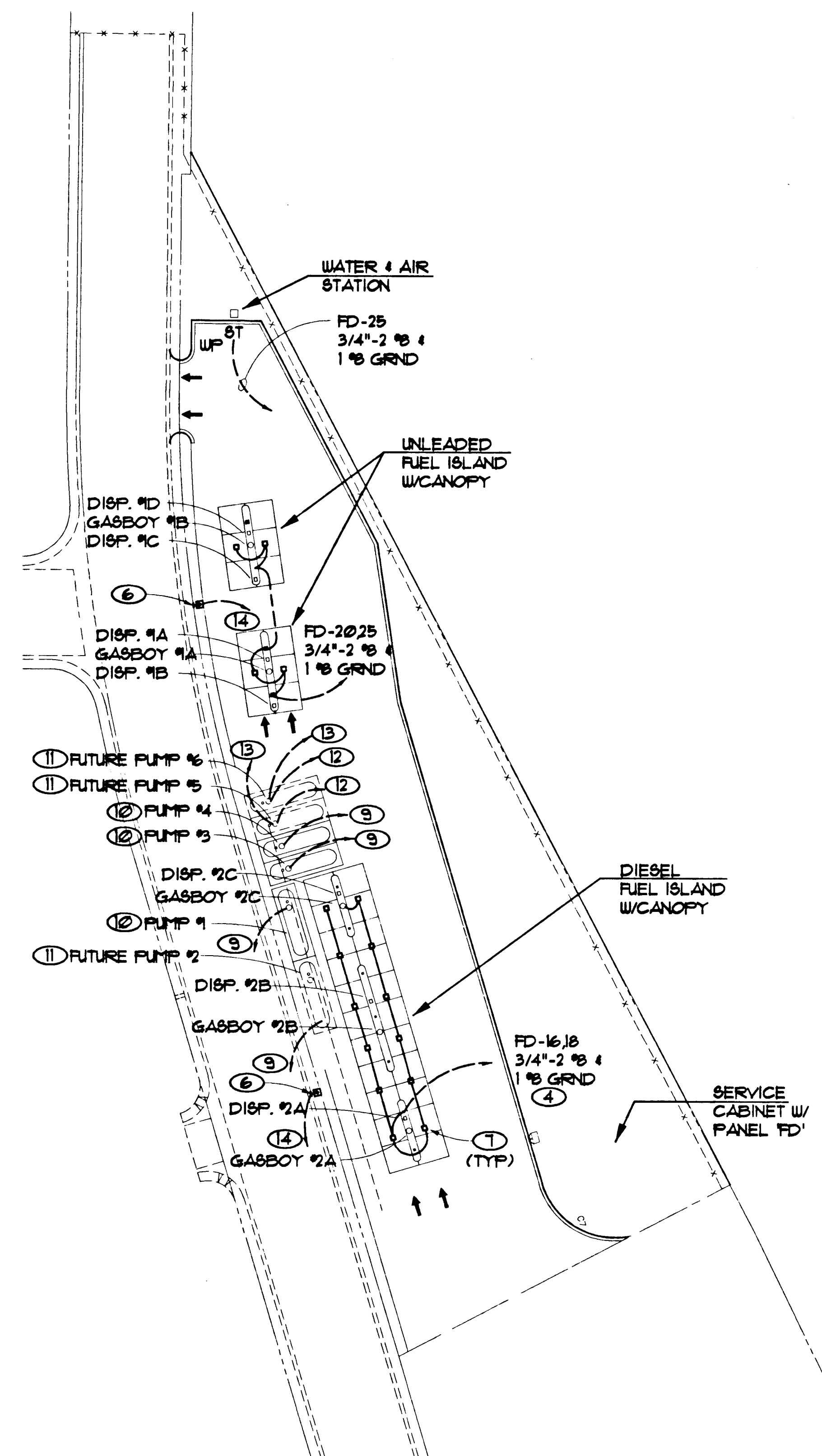
SERVICE CABINET DIAGRAM 2
NO SCALE EST.02

NOTES

- 1 1"-2" ϕ 1/2 GRND
- 2 PROVIDE SEAL-OFF ON CONDUITS ENTERING AND LEAVING HAZARDOUS LOCATIONS AS DEFINED BY NEC ARTICLE 514.
- 3 CIRCUIT VIA 20A, 2 POLE, 250 VOLT RELAY WITH 120 VOLT COIL FOR CNTRL OF PUMP.
- 4 ROUTE VIA 8 POLE CONTACTOR PHOTOCELL CONTROLLED PHOTOCELL MOUNTED ON TOP OF ENCLOSURE.
- 5 BREAKER SHALL BE SWITCHED NEUTRAL TYPE.
- 6 2 1/8" DIA. REQ'D MUSHROOM HEAD PUSHBUTTONS W/P LABEL EMERGENCY STOP. PROVIDE 4" HIGH PEDESTAL WITH CONCRETE BASE.
- 7 PROVIDE ELSCO 1400-SM4-FRAN-SM-DP-L-240-WH-L SURFACE MOUNTED UNDER CANOPY.
- 8 200A 4P CONTACTOR IN NEMA 3R ENCLOSURE
- 9 3/4"-8 ϕ 14 TO TANK MONITOR IN ROOM 120, VERIFY W/ MEGR.
- 10 SEE 1/3.01 FOR ADDITIONAL RACEWAY REQ'TS AT TANKS. COORD. WIRING REQ'TS W/ MEGR.
- 11 STOP CONDUITS TO AREA OF FUTURE TANK.
- 12 1" C TO TANK MONITOR IN ROOM 120 FOR FUTURE USE.
- 13 3/4" C TO PANEL FD FOR FUTURE PUMPS.
- 14 TO CONTACTOR AT PANEL FD.

NOTES

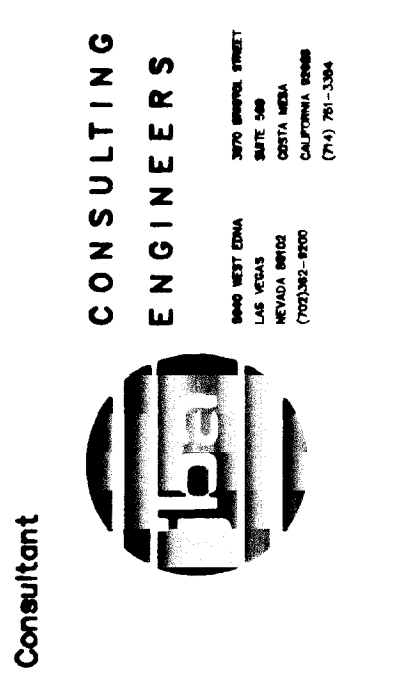
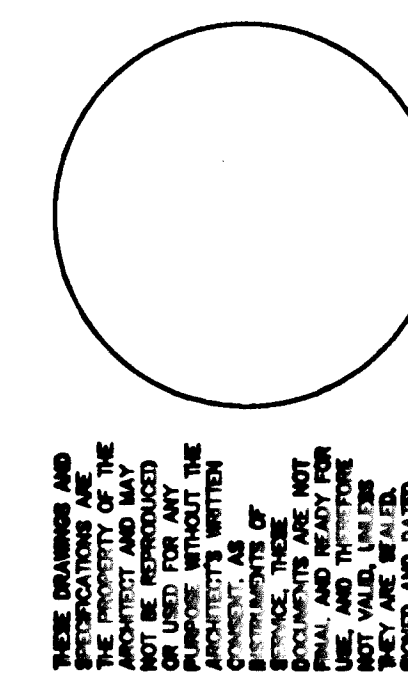
- 1 SEE E5.01 FOR ADDITIONAL BRANCH CIRCUIT WIRING REQ'TS.



ELECTRICAL SITE PLAN A
SCALE: 1" = 40' EST.02

THIS DRAWING PREPARED UNDER SEPARATE CONTRACT BY POGGEMEYER DESIGN GROUP AND IS INCLUDED HERE AS A PART OF THIS BID PACKAGE

709 Valle Verde Court
Henderson, Nevada 89014
Tel. 702.456.3000
Fax. 702.456.6209



Utility & Fuel Island Plans - Electrical
City of Las Vegas
West Service Center
Vehicle Fueling Facility

Date: 2.5.96
Sheet No. 40
ES102
522-V61

SHEET PLOT SCALE: 1"=1'
SHEET FILE NAME: 4660E502