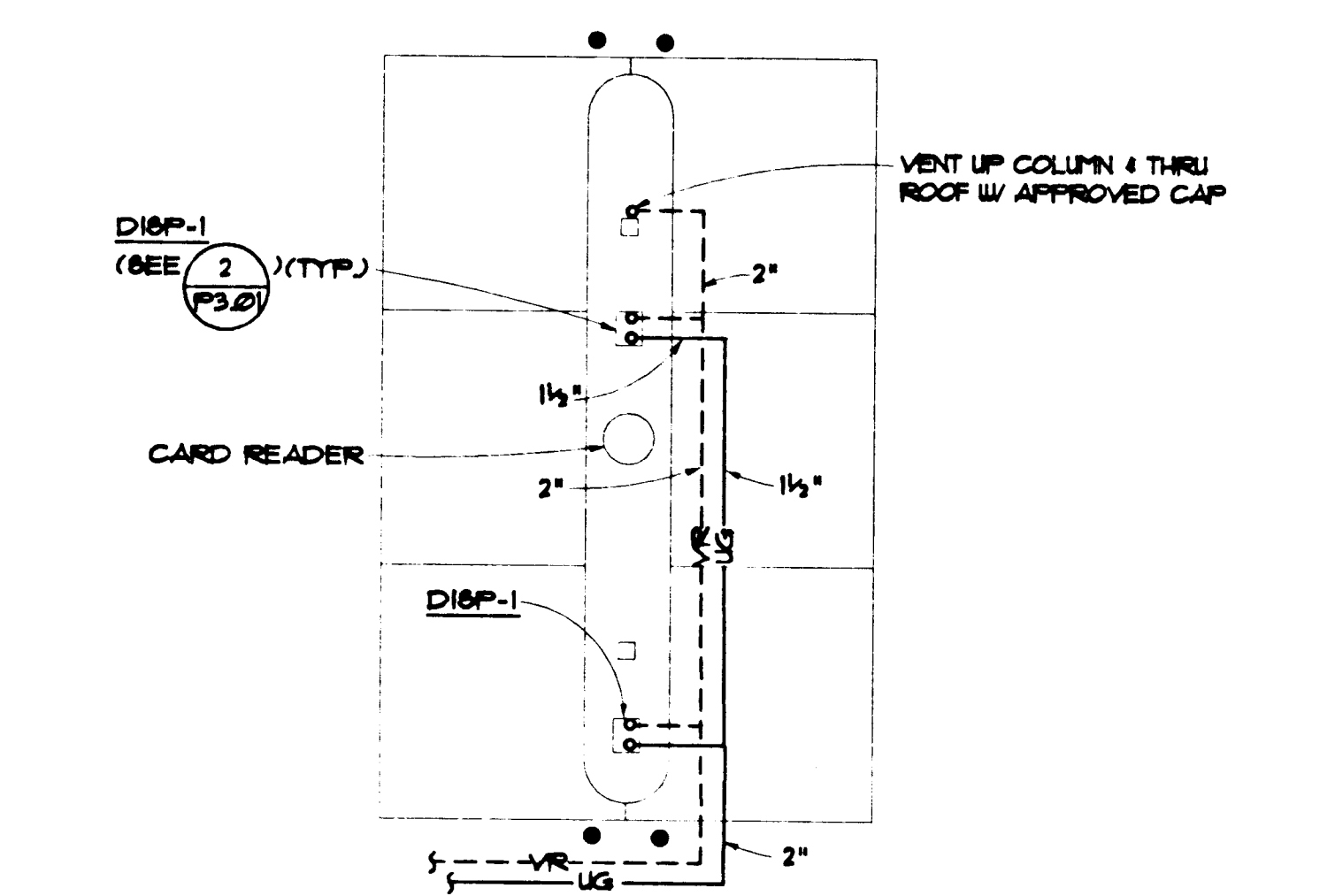
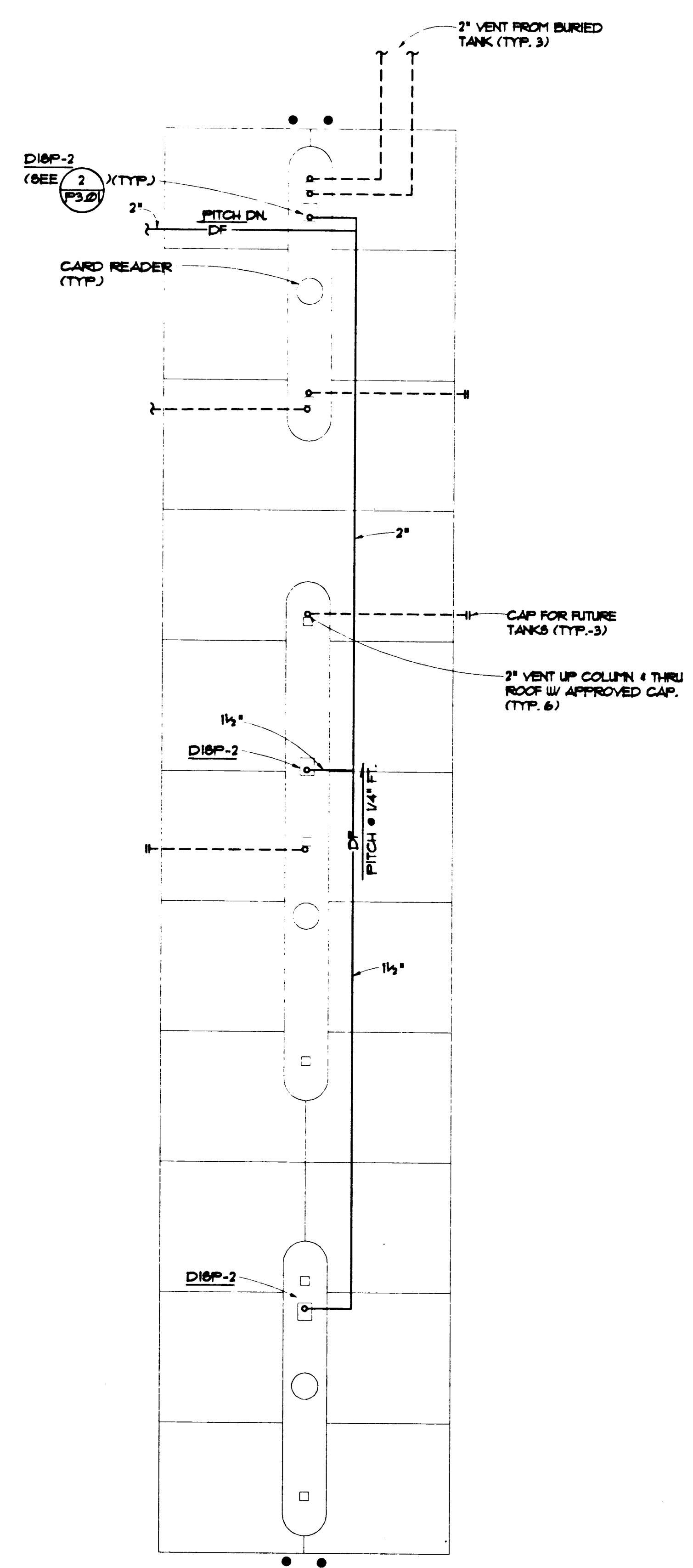


SITE PLAN
SCALE: 1" = 40'
PS102



UNLEADED FUEL ISLAND PLAN
SCALE: 1" = 10'
PS102



DIESEL FUEL ISLAND PLAN
SCALE: 1" = 10'
PS102

PLUMBING LEGEND (THIS SHEET ONLY)		
ABBR.	SYMBOL	DESCRIPTION
UG	---	UNLEADED GASOLINE PIPING
DF	---	DIESEL FUEL PIPING
VR	---	VAPOR RECOVERY PIPING
HD	---	IN GROUND HYDRANT

EQUIPMENT SCHEDULE	
ITEM	DESCRIPTION
ET-1 ET-2 ET-3	FLUID CONTAINMENT DUT-2P (B) - 10000 GALLON DOUBLEWALL FIBERGLASS STORAGE TANK WITH SECONDARY CONTAINMENT COLLAR, TURBINE ENCLOSURE W/ POLYETHYLENE TOP, GROUNDNET 4 COUPLING KITS, 4 HOLD DOWN STRAPS, COMPLETE AS DETAILED ON THE DRAWINGS, JOORIS TYPE II DOUBLEWALL TANK AS EQUAL.
P-1 P-2	GASBOY 8P70S SUPERSENSIBLE GASOLINE PUMP FOR 22 GPM @ 14 PSIG DISCHARGE PRESSURE, W/ 3/4 HP 230V/1PH EXPLOSION PROOF MOTOR 4 RED JACKET XLP DISCHARGE LEAK DETECTOR. PUMP SHALL BE UL LISTED FOR INTENDED APPLICATION, PRODUCT-COOLED AND LUBRICATED.
P-3	GASBOY 8P60S SUPERSENSIBLE DIESEL FUEL PUMP FOR 95 GPM @ 20 PSIG DISCHARGE PRESSURE W/ 1 1/2 HP 230V/1PH EXPLOSION PROOF MOTOR 4 RED JACKET XLP DISCHARGE LEAK DETECTOR. PUMP SHALL BE UL LISTED FOR INTENDED APPLICATION, PRODUCT COOLED AND LUBRICATED.
DISP-1	GASBOY 9882 XTN-IC ELECTRONIC SINGLE PRODUCT TWIN HOSE DISPENSER, UL LISTED FOR UNLEADED GASOLINE APPLICATION, W/ STANDARD FLOW AUTOMATIC NOZZLE W/ VAPOR RECOVERY, FLUORESCENT LIGHTS, PULSER 4 SWITCH DETECT COMPATIBLE WITH CARD READER, FILTER, HIGH HOSE RETRACTOR WITH VAPOR RECOVERY SYSTEM 4 VAPOR RECOVERY HOSES. ALL STAINLESS STEEL PANELS, SHEAR VALVE.
DISP-2	GASBOY 9882 XTN-IC ELECTRONIC SINGLE PRODUCT TWIN HOSE DISPENSER, UL LISTED FOR DIESEL FUEL APPLICATION, W/ HIGH FLOW AUTOMATIC NOZZLE, HIGH HOSE RETRACTOR, FLUORESCENT LIGHTS, PULSER 4 SWITCH DETECT COMPATIBLE WITH CARD READER, FILTER, ALL STAINLESS STEEL PANELS 4 SHEAR VALVE.
AIR-1	COX SENTINEL SERIES C6 UL LISTED COMPRESSED AIR STATION, W/ 3/4 HP 18V/1PH COMPRESSOR, RUN TIMER, 4 25' 1/4" RETRACTABLE WIRE BRAIDED HOSE.

THIS DRAWING PREPARED UNDER SEPARATE CONTRACT BY ROGGEWEYER DESIGN GROUP AND IS INCLUDED HERE AS A PART OF THIS BID PACKAGE

HALL & SANDLER ARCHITECTS

709 Valle Verde Court
Henderson, Nevada 89014
Tel. 702 . 456 . 5000
Fax. 702 . 898 . 6209

CONSULTING ENGINEERS

UTILITY AND FUEL ISLAND PLANS - PLUMBING
CITY OF LAS VEGAS
WEST VEHICLE SERVICE CENTER

Date: 2/5/96
Sheet No. 34
PS102
522-V61