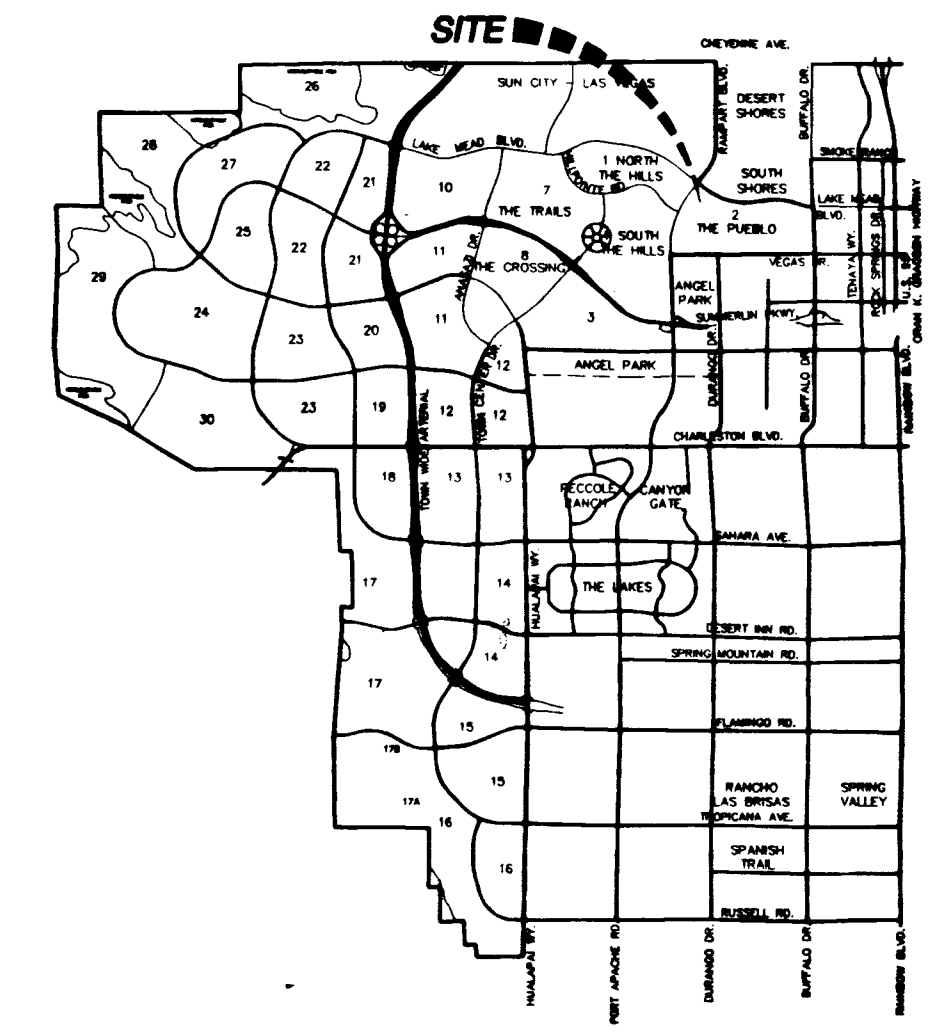
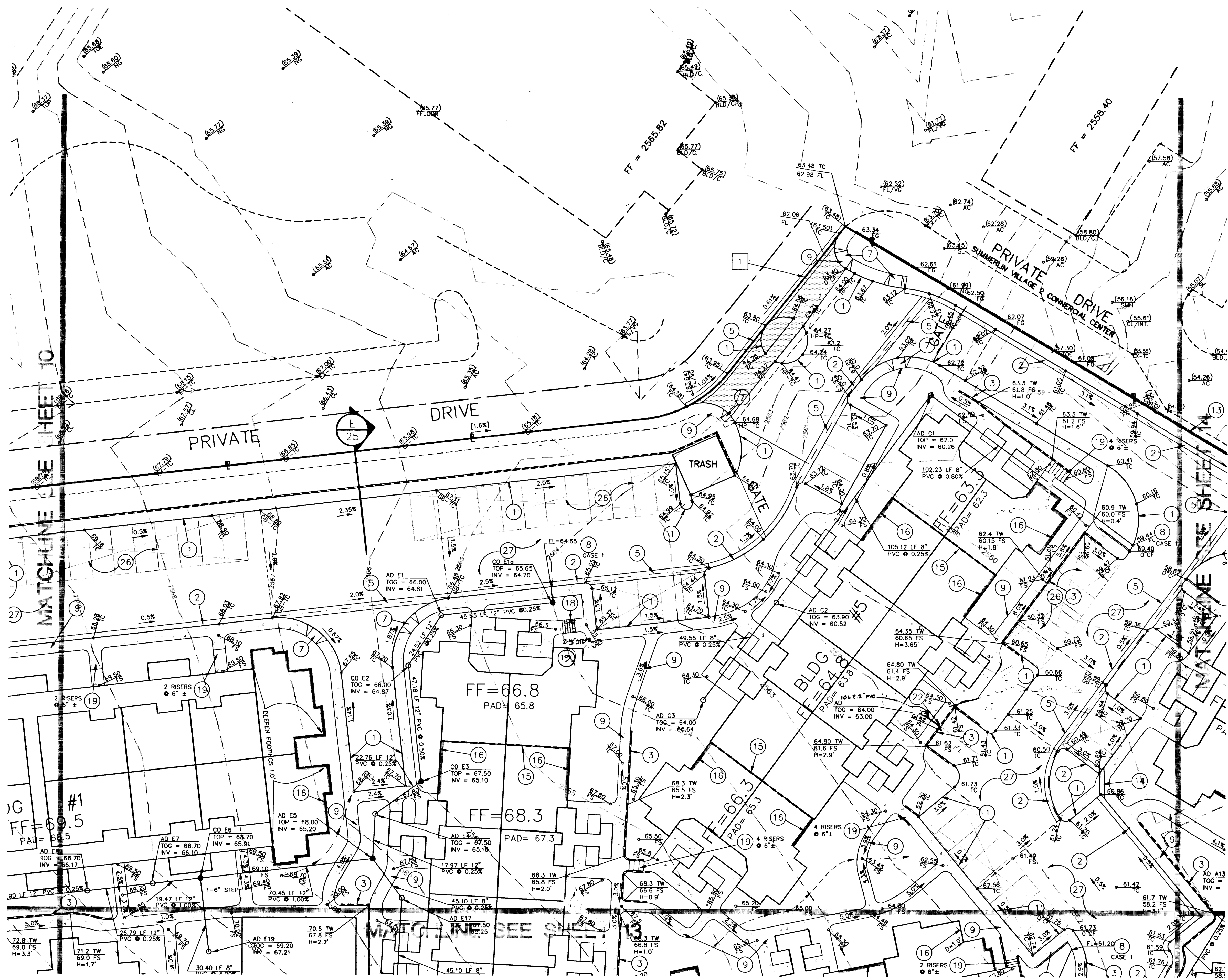
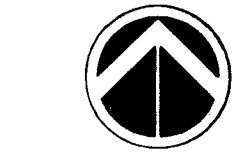


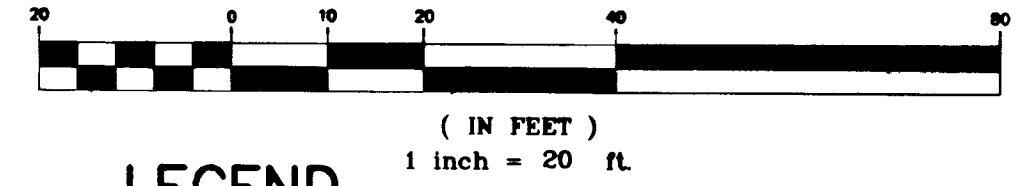
12760



SUMMERLIN VICINITY MAP



GRAPHIC SCALE



LEGEND

- Legend items: UNIT/PARCEL LINE, MATCH LINE, EXISTING GRADE CONTOUR, EXISTING, PROPOSED BY OTHERS OR FUTURE, RATE & DIRECTION OF FLOW, LOT DRAINAGE SWALE, SCARP (2' HOR. TO 1' VERT.) UNLESS OTHERWISE NOTED, FINISH FLOOR, GRADE BREAK, TOP OF CURB, FLOWLINE, FINISH GRADE, SIDEWALK, BEGIN CURVE RADIUS, FINISHED SURFACE, TOP OF WALL, TOP OF GRATE, CURB FACE, SIDEWALK RAMP.

CONSTRUCTION NOTES

- Construction notes 1-27 detailing construction requirements for curbs, retaining walls, sidewalks, ramps, and drainage structures.

INFORMATION NOTES

- Information notes 1-6 regarding match lines, homeowner association maintenance, easements, and access.

BENCHMARK

BM 1LV020C4 RIVET AND PLATE IN TOP OF CURB. NE CORNER OF RAMPART BLDG. & SCHOLAR LANE. ELEVATION = 787.984 M (NAVOD83) 2585.244 FT

BASIS OF BEARINGS

THE BASIS OF BEARINGS BEING THE CENTERLINE OF SCHOLAR LANE, BEARING N 88°27'29" W AS SHOWN IN FILE 89 OF SURVEYS, PAGE 74 IN THE OFFICE OF THE CLARK COUNTY, NEVADA, RECORDER

I CERTIFY THAT THIS GRADING PLAN CONFORMS TO THE APPROVED DRAINAGE STUDY ON FILE AT THE CITY OF LAS VEGAS. Date: 12/4/98

NOTICE TO CONTRACTOR! AVOID CUTTING UNDERGROUND UTILITIES. IT'S COSTLY. CALL before you Dig 1-800-227-2600 UNDERGROUND SERVICE (USA)

Table with columns: NO., DATE, BY, APP'D., REVISION DESCRIPTION.

Professional Engineer Seal for Barbara Mally, License No. 10932, State of Nevada.

Southwest Land Planning & Development logo and contact information: 5426 West Vegas Drive, Las Vegas, Nevada 89108.

Project title block: GRADING PLAN CAREFREE - RAMPART VILLAGE 2. Includes work order number 971016, design by BVS/BKM, date 9/1/98, scale 1"=20', and sheet number 12 of 26.

