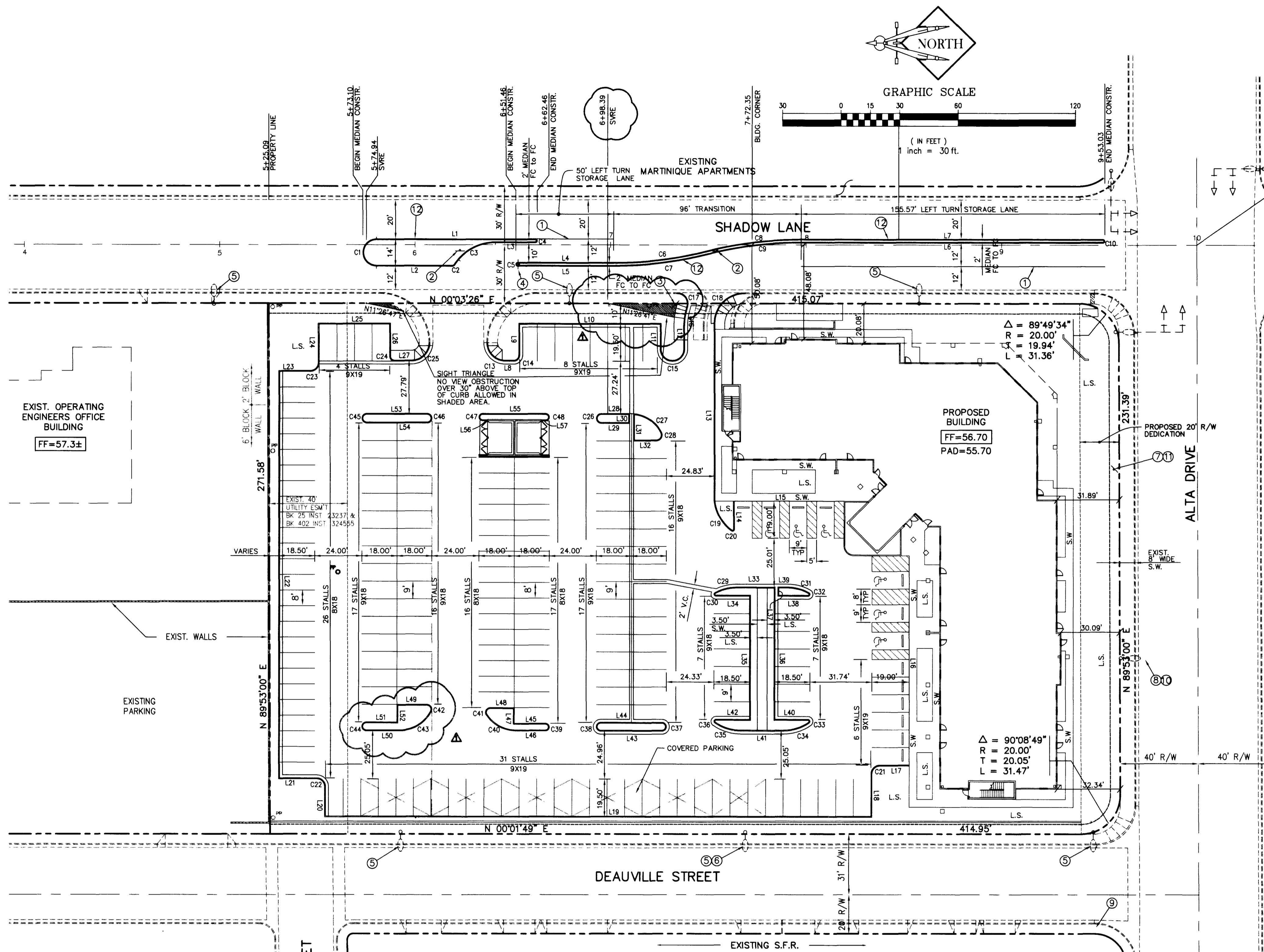


CURVE	LENGTH	RADIUS	TANGENT	DELTA
C1	20.42	6.50		180°00'00"
C2	1.00	1.00	0.55	57°25'16"
C3	25.05	25.00	13.69	57°25'16"
C4	1.57	0.50	708.02	180°04'51"
C5	1.57	0.50		180°00'00"
C6	48.63	194.71	24.44	141°8'36"
C7	48.88	195.71	24.57	141°8'36"
C8	49.55	193.71	24.91	143°39'24"
C9	49.30	192.71	24.79	143°39'24"
C10	1.57	0.50		180°00'00"
C11	14.12	9.00	8.98	89°54'08"
C12	3.93	2.50	2.50	90°00'00"
C13	18.19	5.79		180°00'52"
C14	9.96	31.00	5.02	182°40'11"
C15	9.46	5.00	6.93	108°22'17"
C16	23.99	15.00	15.43	91°37'53"
C17	17.74	21.47	9.41	47°12'06"
C18	2.00	1.00	0.99	126°21'49"
C19	6.28	4.00	4.00	90°00'00"
C20	6.28	4.00	4.00	90°00'00"
C21	6.28	4.00	4.00	90°00'00"
C22	3.14	2.00	2.00	90°00'00"
C23	14.14	9.00	9.00	90°00'00"
C24	6.36	2.02		180°00'00"
C25	17.20	17.00	9.41	180°00'00"
C26	5.08	2.50	4.03	116°25'33"
C27	11.36	23.00	5.80	281°74'11"
C28	1.32	0.50	1.98	151°42'19"
C29	11.36	23.00	5.80	281°74'11"
C30	1.32	0.50	1.98	151°42'19"
C31	1.32	0.50	1.98	151°42'19"
C32	1.32	0.50	1.98	151°42'19"
C33	1.27	0.50	1.80	145°15'36"
C34	13.95	23.00	7.19	34°44'24"
C35	13.95	23.00	7.19	34°44'24"
C36	1.27	0.50	1.60	145°15'36"
C37	5.59	1.78		180°00'00"
C38	5.59	1.78		180°00'00"
C39	4.64	1.48		180°00'00"
C40	17.45	18.00	9.48	55°33'32"
C41	4.34	2.00	3.80	124°26'28"
C42	4.11	2.00	3.31	117°43'11"
C43	19.57	18.00	10.88	180°00'00"
C44	5.59	1.78		180°00'00"
C45	6.22	1.98		180°00'00"
C46	6.22	1.98		180°00'00"
C47	4.38	1.39	1914.67	180°05'00"
C48	4.38	1.39	1914.67	180°05'00"

LINE	LENGTH	BEARING
L1	81.36	S00°03'26"W
L2	39.06	S00°03'26"W
L3	20.39	S00°03'26"W
L4	49.01	S00°03'26"W
L5	49.01	S00°03'26"W
L6	153.38	N00°03'26"E
L7	153.37	N00°03'26"E
L8	4.37	N00°03'26"E
L9	16.45	S89°56'34"E
L10	73.00	S00°02'49"W
L11	13.21	N89°56'34"W
L12	12.09	S89°56'34"E
L13	91.07	S89°56'34"E
L14	14.48	N89°56'34"E
L15	56.50	N00°03'26"E
L16	107.50	S89°56'34"E
L17	15.00	N00°03'26"E
L18	22.25	N89°56'34"W
L19	280.00	N00°03'26"E
L20	15.50	N89°56'34"W
L21	19.56	N00°03'26"E
L22	209.00	N89°56'34"W
L23	16.18	N00°03'26"E
L24	20.34	S89°56'34"E
L25	37.00	S00°03'26"W
L26	16.99	S89°56'34"E
L27	8.70	N00°03'26"E
L28	13.98	N00°03'26"E
L29	13.98	S00°03'26"W
L30	4.05	N89°56'34"W
L31	12.97	N89°56'34"W
L32	11.32	S00°03'26"W
L33	18.83	N00°03'26"E
L34	17.50	N00°03'26"E
L35	64.00	N89°56'34"W
L36	67.69	N89°56'34"W
L37	3.69	S89°56'34"E
L38	15.00	N00°03'26"E
L39	4.33	S00°03'26"W
L40	17.50	N00°03'26"E
L41	21.36	N00°03'26"E
L42	17.50	N00°03'26"E
L43	31.44	N00°03'26"E
L44	31.45	S00°03'26"W
L45	16.52	S00°03'26"W
L46	14.99	N00°03'26"E
L47	8.00	N89°56'34"W
L48	11.66	S00°03'26"W
L49	15.00	S00°03'26"W
L50	17.06	N00°03'26"E
L51	16.22	S00°03'26"W
L52	9.00	N89°56'34"W
L53	31.05	S00°03'26"W
L54	31.04	S00°03'26"W
L55	32.22	N00°03'26"E
L56	2.48	N00°03'26"E
L57	2.41	N00°03'26"E

NOTE:
ALL DIMENSIONS ARE MEASURED TO BACK OF CURB UNLESS OTHERWISE NOTED.



PARKING DATA	
REGULAR	130
COMPACT	59
HANDICAP	8
TOTAL	195

LEGAL DESCRIPTION
LOT 1, FILE 55, PAGE 97 OF PARCEL MAPS.

BASIS OF BEARINGS
NORTH 00°03'26" EAST, BEING THE EAST LINE OF THE SOUTHWEST QUARTER (SW 1/4) OF THE NORTHWEST QUARTER (NW 1/4) OF SECTION 33, TOWNSHIP 20 SOUTH, RANGE 61 EAST, M.D.M., AS SHOWN IN THE CLARK COUNTY, NEVADA RECORDER'S OFFICE IN FILE 55, PAGE 97 OF PARCEL MAPS.

BENCHMARK
BOUNDARY AND TOPOGRAPHIC SURVEY FOR THIS PROPERTY WAS PROVIDED BY P.L. KNOTT ENGINEERING, LTD. "SHADOW QUAIL PARK" DATED AUG. 8, 1995, ALSO FILED IN CLV PLANS' LIBRARY AS DWG. NO. 107-V2379.

*NOTE:
NGVD29 DATUM WAS USED FOR THE ON-SITE PLANS SINCE OFF-SITE PLANS WERE PREPARED BY P.L. KNOTT ENGINEERING, LTD. ON NGVD29 DATUM.

EXISTING		PROPOSED	
---	RIGHT-OF-WAY	---	RETAINING WALL
---	CENTERLINE	---	CHAIN LINK FENCE
---	WATER LINE	---	GRADE BREAK
---	SANITARY SEWER LINE	---	WIRE FENCE
---	GAS LINE	---	FINISH FLOOR
---	STORM DRAIN	---	C.O. INV. CLEANOUT INVERT ELEV.
---	POWER LINE/POWER POLE	---	FLOW LINE
---	TELEPHONE LINE	---	FINISH GRADE
---	FIRE HYDRANT	---	TOP OF CURB
---	WATER VALVE	---	TOP OF WALL
---	METERS/PULL BOXES	---	TOP OF CURB
---	REDUCER	---	GATE
---	MANHOLE	---	CONTOUR
---	CLEANOUT	---	AC. PAVING
---	CONTOUR	---	TYPE "L" CURB & GUTTER
---	AC. PAVING	---	TYPE "A" CURB
---	TYPE "L" CURB & GUTTER	---	CONCRETE
---	TYPE "A" CURB	---	CONCRETE
---	CONCRETE	---	CONCRETE

OFF-SITE NOTE
ALL OFF-SITE IMPROVEMENTS HAVE BEEN INSTALLED PER CLV PLAN #107-V2379.

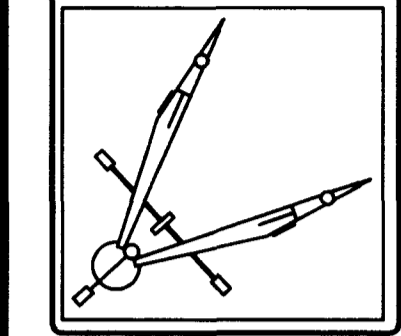
- SIGNAGE AND STRIPING NOTES:
- INSTALL TYPICAL LANE DELINEATION PER UNIFORM STD. DWG. NO. 246.
 - INSTALL R5-1R IN MEDIAN.
 - INSTALL R5-1.
 - INSTALL R4-7 IN MEDIAN.
 - INSTALL R8-3A AND R7-1AP ON EXIST. ST. LIGHT.
 - EXIST. R2-(25) TO REMAIN.
 - EXIST. R2-(30) TO REMAIN, APPROX. LOCATION.
 - EXIST. R7-1AP ON EXIST. ST. LIGHT.
 - EXIST. R1-1 AND 2-03'S TO REMAIN.
 - INSTALL R8-3A ON EXIST. ST. LIGHT.
 - INSTALL R8-3A AND R7-1AP ON EXIST. SPEED LIMIT SIGN.
 - CONSTRUCT MEDIAN PER DETAIL 6 ON SHEET C5.

Call before you dig
1-800-227-2600

Call before you dig
1-702-593-6111

LOCHSA ENGINEERING ASSUMES NO RESPONSIBILITY FOR EXISTING UTILITY LOCATIONS AND ELEVATIONS. THE UTILITIES SHOWN ON THIS DRAWING HAVE BEEN PLOTTED FROM THE BEST AVAILABLE INFORMATION. IT IS, HOWEVER, THE CONTRACTOR'S RESPONSIBILITY TO FIELD VERIFY THE LOCATION AND ELEVATION OF ALL UTILITIES PRIOR TO THE COMMENCEMENT OF ANY CONSTRUCTION. CONTRACTOR TO FIELD VERIFY ALL EXISTING SITE CONDITIONS PRIOR TO CONSTRUCTION. IF A CONFLICT EXISTS BETWEEN WHAT IS SHOWN ON THESE DRAWINGS AND WHAT EXISTS IN THE FIELD, THE CONTRACTOR IS TO NOTIFY THE ARCHITECT, OWNER'S REPRESENTATIVE OR ENGINEER IMMEDIATELY.

LOCHSA ENGINEERING
5828 Spring Mountain
Suite 308
Las Vegas, Nevada, 89102
Phone (702) 365-9312
Fax (702) 365-9317



ALTA SHADOW PARK
JOB TITLE

HORIZONTAL CONTROL PLAN
SHEET TITLE

REV. NO.	DATE	DESCRIPTION
1	11/25/97	RELOCATE BLDG & SOUTH DRIVEWAY NORTH 10' REVERSE PARKING LAYOUT

DATE: NOV. 25, 1997
JOB No. 1191
DESIGN BY: M.M.B.
DRAWN BY: C.W.H.
SHEET No. 02
SHEET 2 OF 5

107-V2716