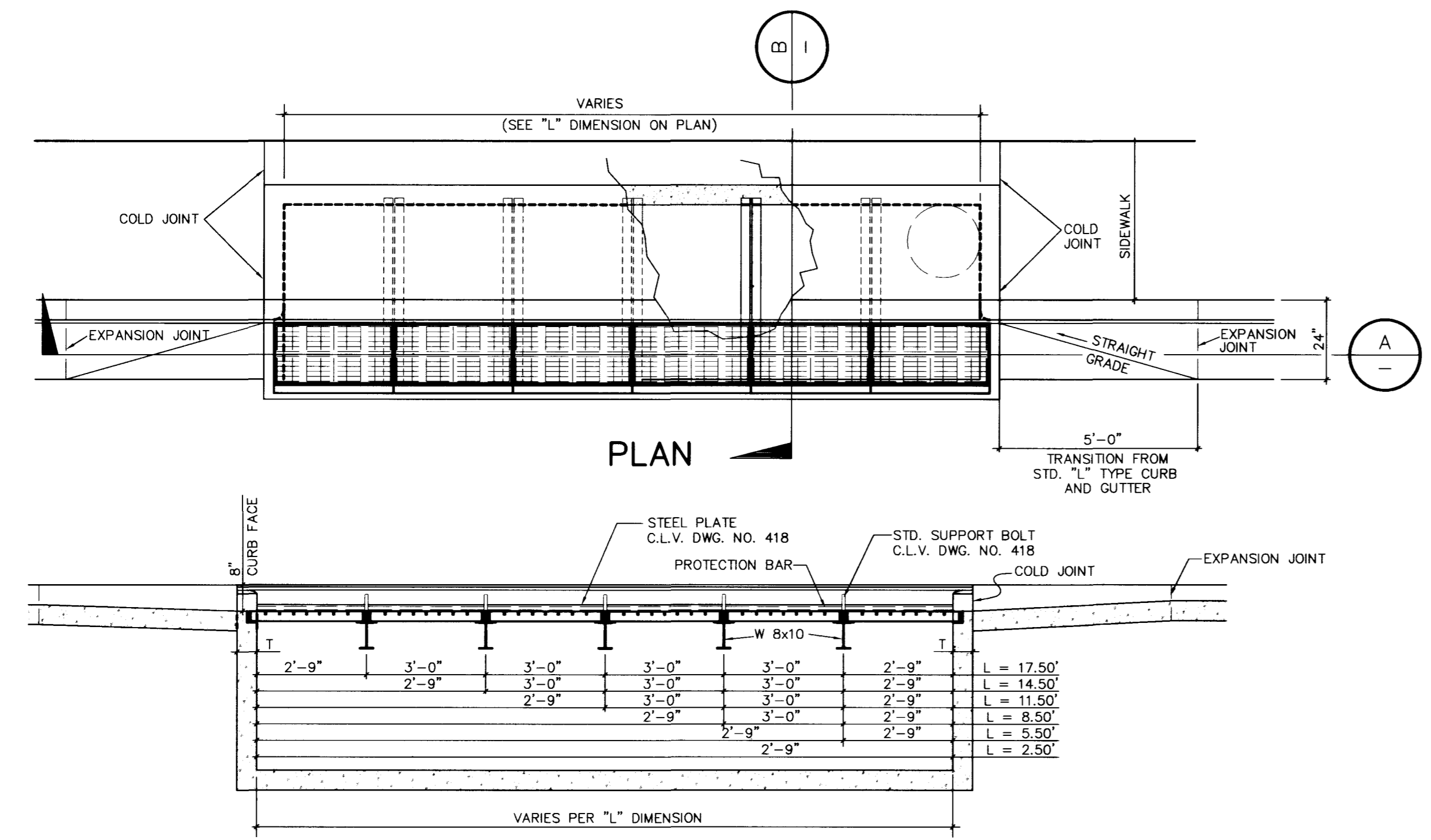
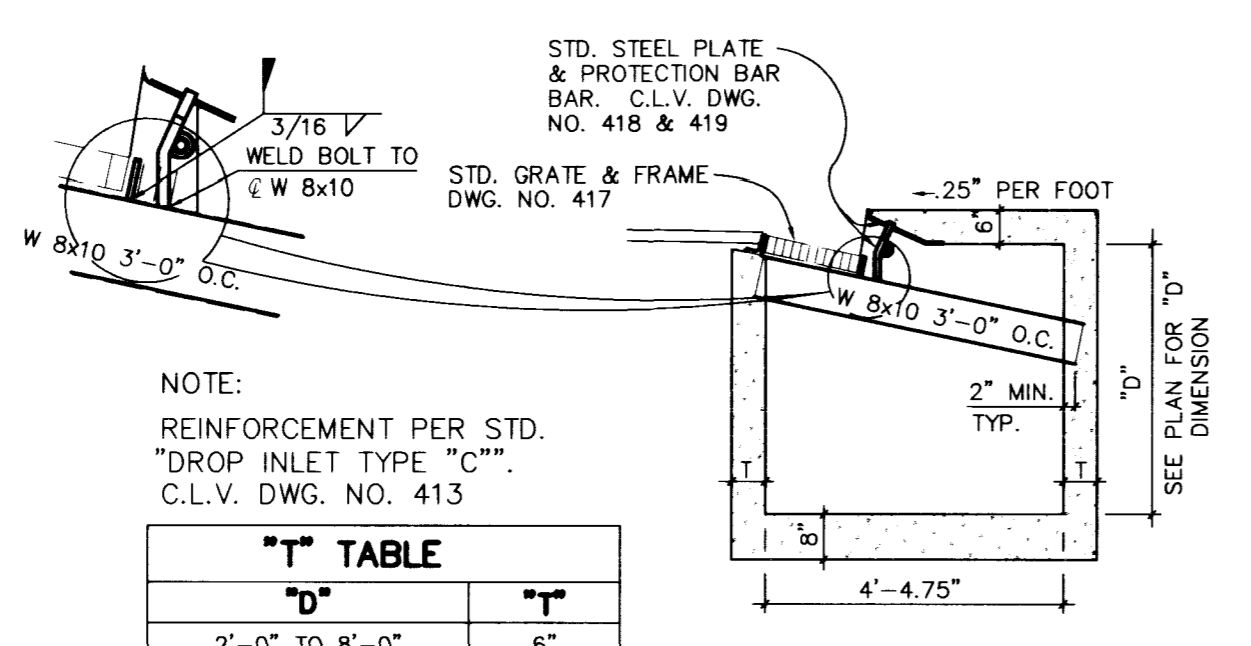


WATER LATERAL PROFILE @ 868+59.00
 SCALE: HORIZ. 1" = 20'
 VERT. 1" = 5'



SECTION A

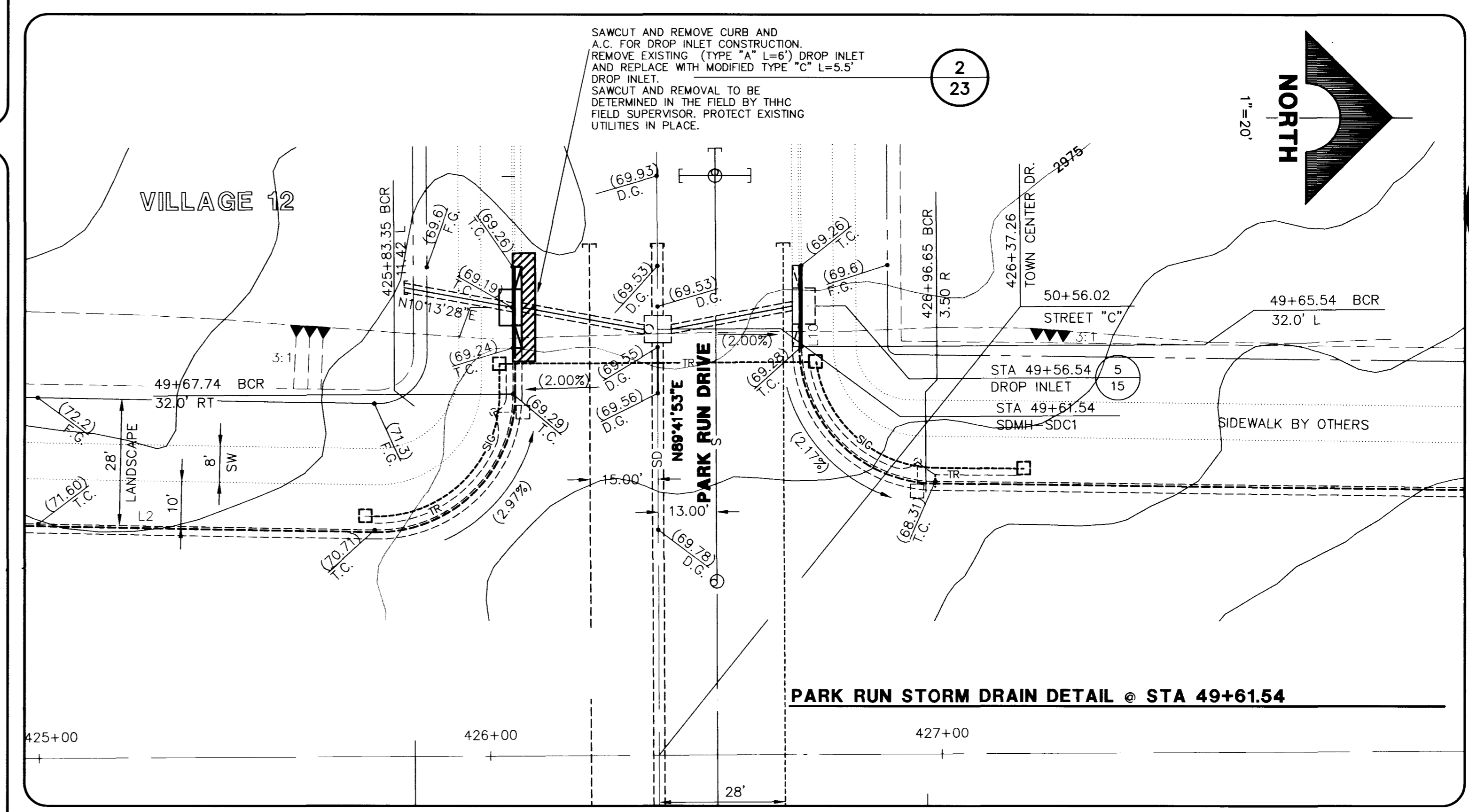


NOTE:
 REINFORCEMENT PER STD.
 "DROP INLET TYPE 'C'".
 C.L.V. DWG. NO. 413

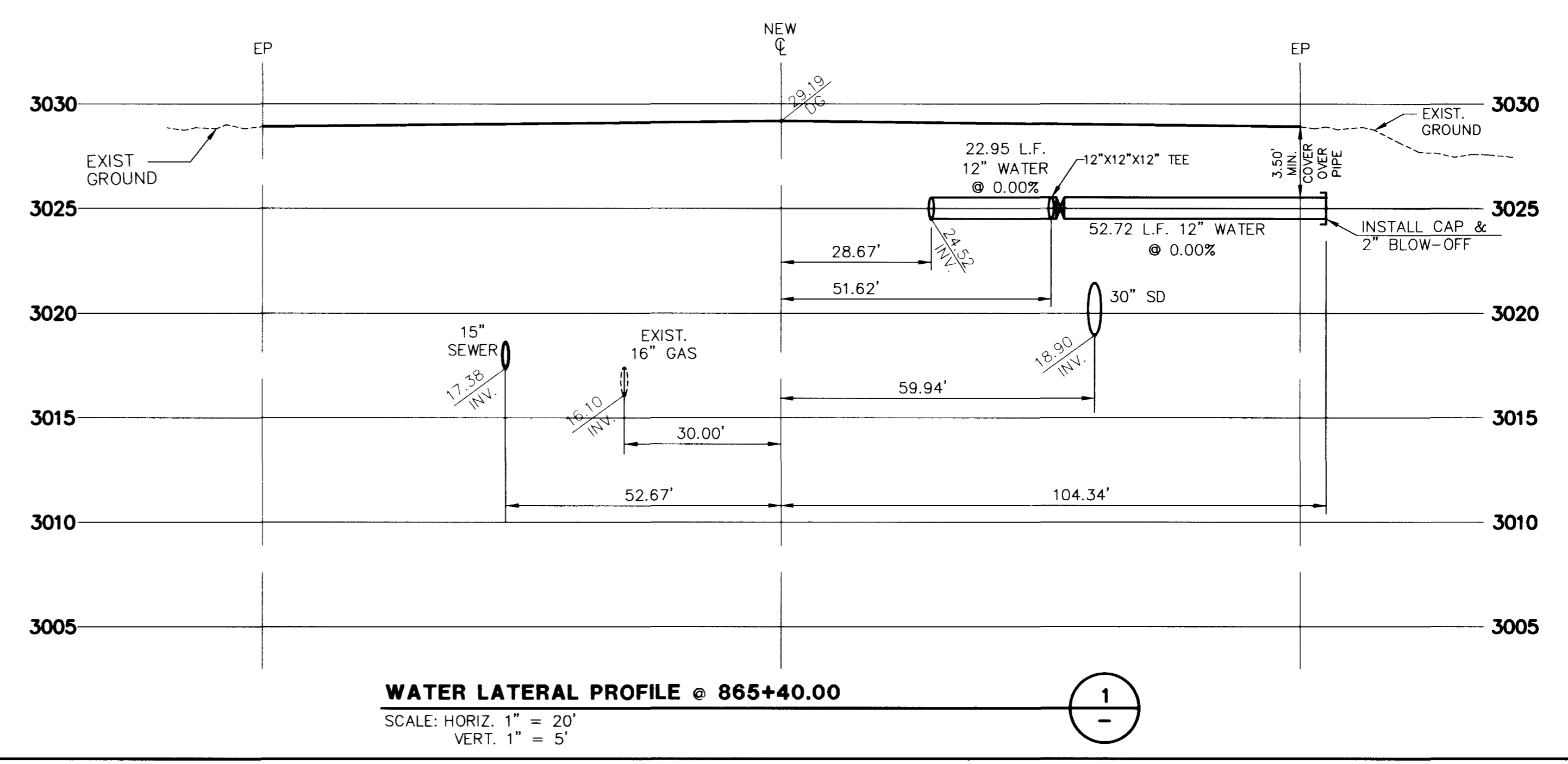
"D"	"T"
2'-0" TO 8'-0"	6"
8'-1" TO 20'-0"	8"

MODIFIED TYPE 'C' DROP INLET DETAIL
 SCALE: 1" = 20'

APPROVAL:
Bonnie Craft 1st Approval 11-10-98
 LAS VEGAS VALLEY WATER DISTRICT 11-17-98
 DATE



PARK RUN STORM DRAIN DETAIL @ STA 49+61.54



WATER LATERAL PROFILE @ 865+40.00
 SCALE: HORIZ. 1" = 20'
 VERT. 1" = 5'

RECOMMENDED
 BERT A. HUGHES
 P.E. NO. 10259

DATE: _____
 REV. DATE: _____
 DESCRIPTION: _____

STATE OF NEVADA
 PROFESSIONAL ENGINEER
 BERT A. HUGHES
 CIVIL
 LICENSE NO. 10259

G. C. WALLACE, INC.
 Engineering/Architecture
 1555 SOUTH RAINBOW BLVD. LAS VEGAS, NEVADA 89102 (702) 363-1200
 SUMMERLIN DIVISION: (702) 363-0991

SUMMERLIN
CHARLESTON BOULEVARD
PAVILION CENTER DRIVE TO TOWN CENTER DRIVE
UTILITY LATERAL PROFILES - 3
AND STORM DRAIN DETAILS

SHEET
23
 SHT 23 OF 25

JOB NO. 62012.224

F:\62012\224a\DWG\LWS\Chrt-1.dwg Tue Nov 17 09:59:12 1998 By: c.m.l.

