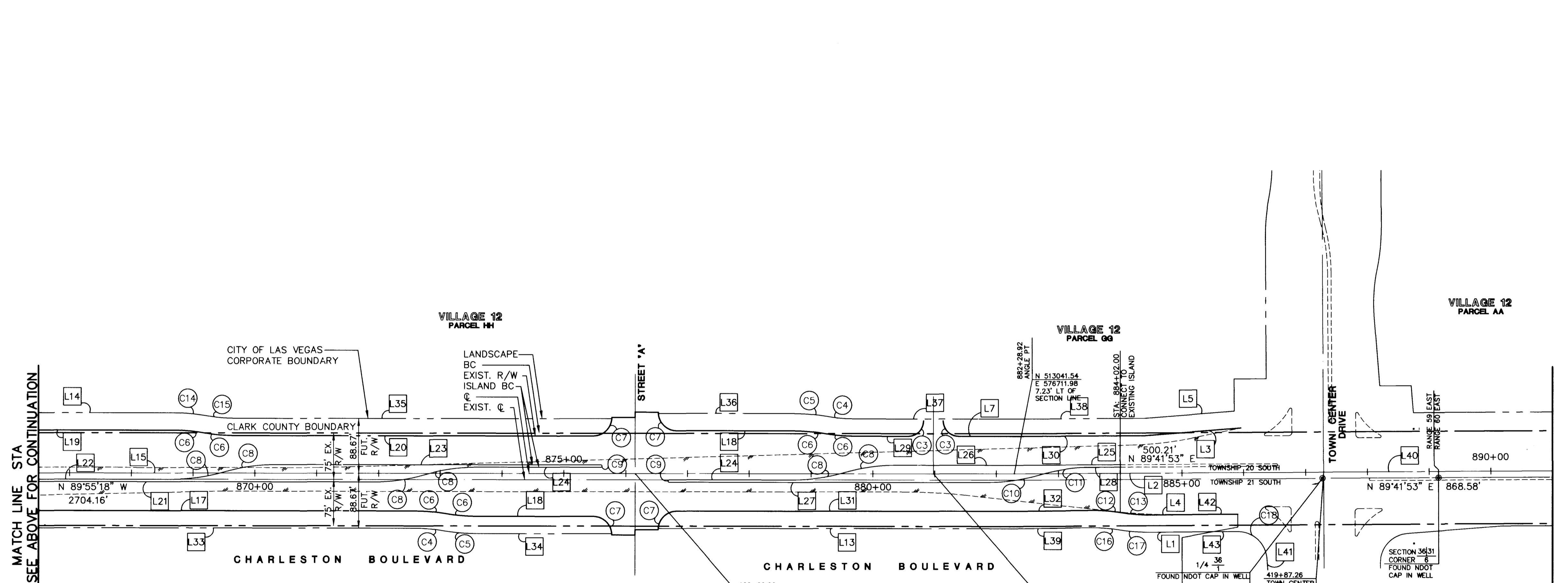


CURVE TABLE				
CURVE	RADIUS	DELTA	LENGTH	TANGENT
C1	75.00	13°21'04"	17.48	8.78
C2	1.00	166°38'56"	2.91	8.54
C3	25.00	90°00'00"	39.27	25.00
C4	272.00	09°45'07"	46.30	23.20
C5	328.00	09°45'07"	55.83	27.98
C6	300.00	09°45'07"	51.06	25.58
C7	30.00	90°00'00"	47.12	30.00
C8	300.00	16°15'37"	85.14	42.86
C9	2.00	180°00'00"	6.28	0.00
C10	300.00	16°32'29"	86.61	43.61
C11	300.00	16°09'40"	84.62	42.59
C12	300.00	09°19'17"	48.81	24.46
C13	300.00	09°45'24"	51.09	25.61
C14	326.00	09°45'07"	55.49	27.81
C15	274.00	09°45'07"	46.84	23.37
C16	272.00	09°17'59"	44.15	22.12
C17	328.00	09°45'24"	55.85	27.99
C18	47.00	85°48'21"	70.39	43.68

MATCH LINE STA. SEE BELOW FOR CONTINUATION



BEARING TABLE		
No.	BEARING	DISTANCE
L1	N 89°15'46" E	38.78
L2	N 89°41'53" E	500.21
L3	N 85°30'12" E	155.90
L4	N 89°15'46" E	38.88
L5	N 85°30'12" E	146.42
L6	N 00°04'42" E	8.67
L7	N 89°55'18" W	89.95
L8	N 88°55'33" E	660.22
L9	N 89°48'28" E	500.01
L10	N 87°47'35" E	660.53
L11	N 88°50'01" E	342.25
L12	N 89°48'28" E	2187.16
L13	N 89°55'18" W	576.55
L14	N 89°55'18" W	324.69
L15	N 89°55'18" W	2704.16
L16	N 89°55'18" W	11.00
L17	N 89°55'18" W	674.88
L18	N 89°55'18" W	187.96
L19	N 89°55'18" W	294.69
L20	N 89°55'18" W	579.14
L21	N 89°55'18" W	589.75
L22	N 89°55'18" W	282.07
L23	N 89°55'18" W	524.82
L24	N 89°55'18" W	200.00
L25	N 89°41'53" E	173.04
L26	N 89°55'18" W	190.41
L27	N 89°55'18" W	513.89
L28	N 89°41'53" E	48.75
L29	N 89°55'18" W	84.87
L30	N 89°41'53" E	211.31
L31	N 89°55'18" W	546.42
L32	N 89°15'46" E	124.74
L33	N 89°55'18" W	704.81
L34	N 89°55'18" W	217.87
L35	N 89°55'18" W	609.08
L36	N 89°55'18" W	217.89
L37	N 89°55'18" W	256.74
L38	N 89°41'53" E	210.19
L39	N 89°15'46" E	124.83
L40	N 89°41'53" E	868.58
L41	N 04°29'46" W	18.42
L42	N 89°41'53" E	98.83
L43	N 89°41'53" E	98.73

- CLV GRADING NOTES**
- IN THE EVENT THAT ANY UNFORESEEN CONDITIONS NOT COVERED BY THESE NOTES ARE ENCOUNTERED DURING GRADING OPERATIONS, THE OWNER/ENGINEER SHALL BE IMMEDIATELY NOTIFIED FOR DIRECTION.
 - IT SHALL BE THE RESPONSIBILITY OF THE CONTRACTOR TO PERFORM ALL NECESSARY CUTS AND FILLS WITHIN THE LIMITS OF THIS PROJECT AND THE RELATED OFF-SITE WORK, SO AS TO GENERATE THE DESIRED SUBGRADE, FINISH GRADES AND SLOPES SHOWN.
 - CONTRACTOR SHALL TAKE FULL RESPONSIBILITY FOR ALL EXCAVATION. ADEQUATE SHORING SHALL BE DESIGNED AND PROVIDED BY THE CONTRACTOR TO PREVENT UNDERMINING OF ANY ADJACENT FEATURES OF FACILITIES AND/OR CAVING OF THE EXCAVATION.
 - THE CONTRACTOR IS WARNED THAT AN EARTHWORK BALANCE WAS NOT NECESSARILY THE INTENT OF THIS PROJECT. ANY ADDITIONAL MATERIAL REQUIRED OR LEFTOVER MATERIAL FOLLOWING EARTHWORK OPERATIONS BECOMES THE RESPONSIBILITY OF THE CONTRACTOR.
 - THE GRADING CONTRACTOR IS RESPONSIBLE TO COORDINATE WITH THE OWNER TO PROVIDE FOR THE REQUIREMENTS OF THE PROJECT STORM WATER POLLUTION PREVENTION PLAN (SWPPP) AND ASSOCIATED PERMIT.
 - CONTRACTOR SHALL GRADE TO THE LINES AND ELEVATIONS SHOWN ON THE PLANS WITHIN THE FOLLOWING HORIZONTAL AND VERTICAL TOLERANCES AND DEGREES OF COMPACTION, IN THE AREAS INDICATED:
- | | HORIZONTAL | VERTICAL | COMPACTION |
|---------------------------|------------|----------------|-------------------------------------|
| A. PAVEMENT AREA SUBGRADE | 0.1'+ | +0.0' TO -0.1' | AS INDICATED ON PLAN |
| B. ENGINEERED FILL | 0.5'+ | +0.1' TO -0.1' | MINIMUM OF 90% OR AS SHOWN ON PLANS |

- ALL CUT AND FILL SLOPES SHALL BE PROTECTED UNTIL EFFECTIVE EROSION CONTROL HAS BEEN ESTABLISHED.
- THE USE OF POTABLE WATER WITHOUT A SPECIAL PERMIT FOR BUILDING OR CONSTRUCTION PURPOSES INCLUDING CONSOLIDATION OF BACKFILL OR DUST CONTROL IS PROHIBITED. THE CONTRACTOR SHALL OBTAIN ALL NECESSARY PERMITS FOR CONSTRUCTION WATER.
- THE CONTRACTOR SHALL MAINTAIN THE STREETS, SIDEWALKS AND ALL OTHER PUBLIC RIGHT-OF-WAY IN A CLEAN, SAFE AND USABLE CONDITION. ALL SPILLS OF SOIL, ROCK OR CONSTRUCTION DEBRIS SHALL BE PROMPTLY REMOVED FROM THE PUBLICLY OWNED PROPERTY DURING CONSTRUCTION AND UPON COMPLETION OF THE PROJECT. ALL ADJACENT PROPERTY, PRIVATE OR PUBLIC SHALL BE MAINTAINED IN A CLEAN, SAFE AND USABLE CONDITION.

SUMMERLIN
 CHARLESTON BOULEVARD
 PAVILION CENTER DRIVE TO TOWN CENTER DRIVE
 HORIZONTAL CONTROL PLAN
 SHEET
3
 SHT 3 OF 25
 JOB NO. 62012.224

G. C. WALLACE, INC.
 Engineering/Architecture
 1555 SOUTH RAINBOW BLVD., LAS VEGAS, NEVADA 89102 (702) 363-1200
 SUMMERLIN DIVISION (702) 363-0991

RECOMMENDED
 BEST PRACTICES
 DATE OF REVIEW
 10/25/09

DATE
 AGEN
 APPL
 DATE
 ICGW
 APP

DESCRIPTION
 REV
 DATE

F:\62012\224\DWG\MS\CHTR\H.C.Dwg Fr: Aug 28 16:01:47 1999

