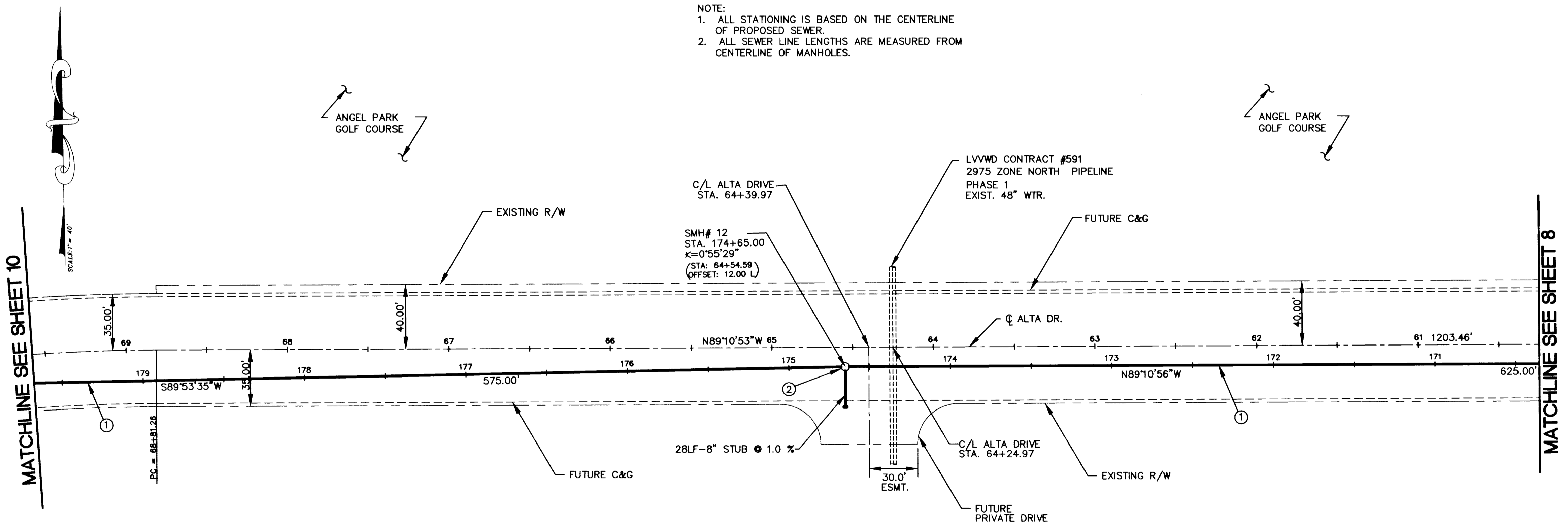


PROFILE



NOTE:  
 1. ALL STATIONING IS BASED ON THE CENTERLINE OF PROPOSED SEWER.  
 2. ALL SEWER LINE LENGTHS ARE MEASURED FROM CENTERLINE OF MANHOLES.

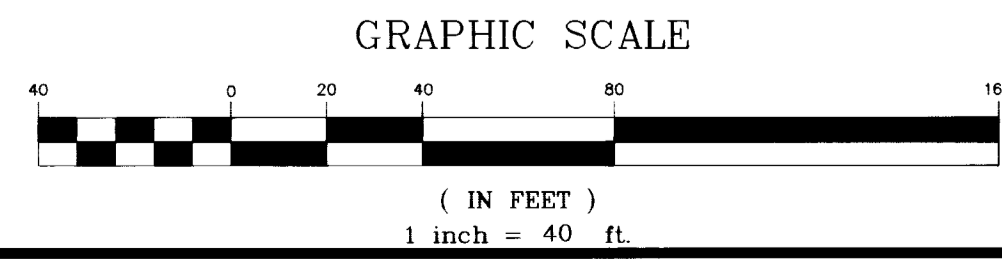
MATCHLINE SEE SHEET 10

MATCHLINE SEE SHEET 8

**Call before you Dig**  
 NOTICE  
 UTILITY LOCATIONS SHOWN HEREON ARE APPROXIMATE ONLY. IT SHALL BE THE CONTRACTOR'S RESPONSIBILITY TO DETERMINE THE EXACT VERTICAL AND HORIZONTAL LOCATION OF ALL EXISTING UNDERGROUND UTILITIES PRIOR TO COMMENCING CONSTRUCTION. NO REPRESENTATION IS MADE THAT ALL EXISTING UTILITIES ARE SHOWN HEREON. THE ENGINEER ASSUMES NO RESPONSIBILITY FOR UTILITIES NOT SHOWN OR UTILITIES NOT SHOWN IN THEIR PROPER LOCATION.  
 CALL BEFORE YOU DIG: 1-800-227-2600

- CONSTRUCTION NOTES**
- CONSTRUCT 21" SANITARY SEWER
  - CONSTRUCT 60" SEWER MANHOLE PER DWG. No. SD-1 OF "SEWER STD'S"

PLAN: ALTA DRIVE-SEWER



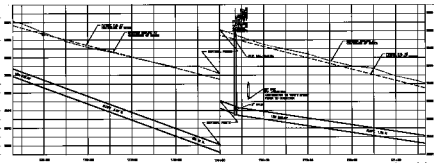
**STANLEY CONSULTANTS**  
 1771 EAST FLAMINGO ROAD, SUITE 104-B  
 LAS VEGAS, NEVADA 89119 (702) 369-9396  
 INTERNATIONAL CONSULTANTS IN ENGINEERING, PLANNING AND MANAGEMENT

DATE	
REVISIONS	
SCALE (H) 1"=40'	SCALE (V) 1"=4'
SCALE (A) 1"=40'	SCALE (V) 1"=4'
F.L.D. BK. # N/A	FEB 26, 1997
DESIGN BY AVT/RDB	
W.A. # N/A	
<b>ENGINEERING DESIGN SECTION</b>	
CITY ENGINEER: DENNIS ANDERSON, P.E. DESIGN ENGINEER: STANLEY CONSULTANTS	
<b>DEPARTMENT OF PUBLIC WORKS</b>	
PROJECT: ALTA SEWER INTERCEPTOR	
SHEET: SEWER PLAN AND PROFILE	
DRAWING NO.	9
307-V751	11

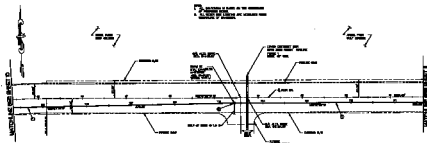
P:\PROJECTS\13109\DWGS\ALT\_SMR2.MXD Feb 26 11:22:28 1997 ROGER B.

P:\PROJECTS\13109\DWGS\ALT\_SVR2 11-25-96 3:47:47 PM EST

2114



PROFILE



PLAN ALPHA DITCH SECTION

SECTION SCALE



- CENTERLINE OF DITCH
- CENTERLINE OF ROAD
- CENTERLINE OF SIDEWALK

DATE: 10/15/50  
 DRAWN BY: J. W. BROWN  
 CHECKED BY: J. W. BROWN  
 PROJECT NO.: 1-100-100-100

SEANEY CONSULTANTS  
 100 N. 10th St.  
 ST. PAUL, MINN. 55102

SHEET NO. 10 OF 10  
 PROJECT NO. 1-100-100-100  
 DRAWING TITLE: ALPHA DITCH SECTION

DEPARTMENT OF PUBLIC WORKS  
 SEWER PLAN  
 ALPHA DITCH  
 INTERCEPTOR

AND PROFILE

