

DRAWING REVISIONS	
NO.	DESCRIPTION

CARPENTER SELLERS DEL MONTE
 ARCHITECTS

UTILITY PLAN 2
 LVCCD EAST LAS VEGAS LIBRARY
 SHELL & CORE

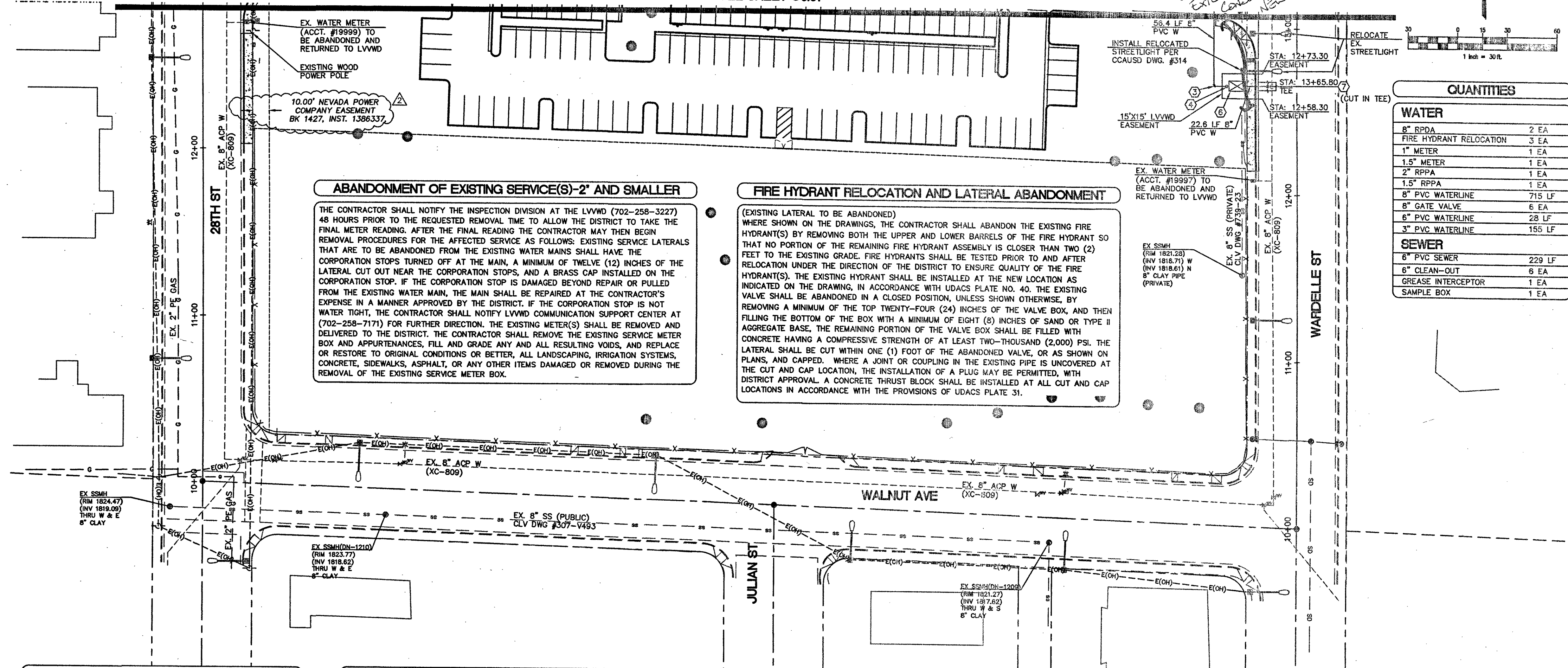
REVISIONS		
NO.	DATE	DESCRIPTION

C5.02
14

EXISTING SERVICES
 IF ANY OF THE EXISTING SERVICES ARE INCORRECTLY LOCATED OR NOT USED FOR ANY REASON, THE DEVELOPER SHALL ABANDON THE LATERALS AT THE CONNECTION TO THE ACTIVE MAIN IN ACCORDANCE WITH THE UDACS STANDARDS, AND AT THE DEVELOPER'S EXPENSE.

EASEMENT WITH TREES, SHRUBS, DECORATIVE ROCKS, BLOCK WALL, OR FENCE
 TREES, SHRUBS, OR DECORATIVE ROCKS, AND ANY BLOCK WALL OR OTHER FENCE MATERIAL, SHALL BE DESIGNED AND CONSTRUCTED AROUND THE EASEMENT(S) TO ALLOW THE DISTRICT DIRECT ACCESS TO THE VAULT(S), BACKFLOW ASSEMBLIES, AND PIPING FROM THE ADJACENT RIGHT-OF-WAY.

MATCHLINE - SEE SHEET C5.01



QUANTITIES

WATER	
8" RPPA	2 EA
FIRE HYDRANT RELOCATION	3 EA
1" METER	1 EA
1.5" METER	1 EA
2" RPPA	1 EA
1.5" RPPA	1 EA
8" PVC WATERLINE	715 LF
8" GATE VALVE	6 EA
8" PVC WATERLINE	28 LF
8" PVC WATERLINE	155 LF

SEWER	
6" PVC SEWER	229 LF
6" CLEAN-OUT	6 EA
GREASE INTERCEPTOR	1 EA
SAMPLE BOX	1 EA

ABANDONMENT OF EXISTING SERVICE(S)-2" AND SMALLER
 THE CONTRACTOR SHALL NOTIFY THE INSPECTION DIVISION AT THE LVWD (702-258-3227) 48 HOURS PRIOR TO THE REQUESTED REMOVAL TIME TO ALLOW THE DISTRICT TO TAKE THE FINAL METER READING. AFTER THE FINAL READING THE CONTRACTOR MAY THEN BEGIN REMOVAL PROCEDURES FOR THE AFFECTED SERVICE AS FOLLOWS: EXISTING SERVICE LATERALS THAT ARE TO BE ABANDONED FROM THE EXISTING WATER MAINS SHALL HAVE THE CORPORATION STOPS TURNED OFF AT THE MAIN, A MINIMUM OF TWELVE (12) INCHES ON THE LATERAL CUT OUT NEAR THE CORPORATION STOPS, AND A BRASS CAP INSTALLED ON THE CORPORATION STOP. IF THE CORPORATION STOP IS DAMAGED BEYOND REPAIR OR PULLED FROM THE EXISTING WATER MAIN, THE MAIN SHALL BE REPAIRED AT THE CONTRACTOR'S EXPENSE IN A MANNER APPROVED BY THE DISTRICT. IF THE CORPORATION STOP IS NOT WATER TIGHT, THE CONTRACTOR SHALL NOTIFY LVWD COMMUNICATION SUPPORT CENTER AT (702-258-7171) FOR FURTHER DIRECTION. THE EXISTING METER(S) SHALL BE REMOVED AND DELIVERED TO THE DISTRICT. THE CONTRACTOR SHALL REMOVE THE EXISTING SERVICE METER BOX AND APURTENANCES, FILL AND GRADE ANY AND ALL RESULTING VOIDS, AND REPLACE OR RESTORE TO ORIGINAL CONDITIONS OR BETTER, ALL LANDSCAPING, IRRIGATION SYSTEMS, CONCRETE, SIDEWALKS, ASPHALT, OR ANY OTHER ITEMS DAMAGED OR REMOVED DURING THE REMOVAL OF THE EXISTING SERVICE METER BOX.

FIRE HYDRANT RELOCATION AND LATERAL ABANDONMENT
 (EXISTING LATERAL TO BE ABANDONED)
 WHERE SHOWN ON THE DRAWINGS, THE CONTRACTOR SHALL ABANDON THE EXISTING FIRE HYDRANT(S) BY REMOVING BOTH THE UPPER AND LOWER BARRELS OF THE FIRE HYDRANT SO THAT NO PORTION OF THE REMAINING FIRE HYDRANT ASSEMBLY IS CLOSER THAN TWO (2) FEET TO THE EXISTING GRADE. FIRE HYDRANTS SHALL BE TESTED PRIOR TO AND AFTER RELOCATION UNDER THE DIRECTION OF THE DISTRICT TO ENSURE QUALITY OF THE FIRE HYDRANT(S). THE EXISTING HYDRANT SHALL BE INSTALLED AT THE NEW LOCATION AS INDICATED ON THE DRAWING, IN ACCORDANCE WITH UDACS PLATE NO. 40. THE EXISTING VALVE SHALL BE ABANDONED IN A CLOSED POSITION, UNLESS SHOWN OTHERWISE, BY REMOVING A MINIMUM OF THE TOP TWENTY-FOUR (24) INCHES OF THE VALVE BOX, AND THEN FILLING THE BOTTOM OF THE BOX WITH A MINIMUM OF EIGHT (8) INCHES OF SAND OR TYPE II AGGREGATE BASE. THE REMAINING PORTION OF THE VALVE BOX SHALL BE FILLED WITH CONCRETE HAVING A COMPRESSIVE STRENGTH OF AT LEAST TWO-THOUSAND (2,000) PSI. THE LATERAL SHALL BE CUT WITHIN ONE (1) FOOT OF THE ABANDONED VALVE, OR AS SHOWN ON PLANS, AND CAPPED. WHERE A JOINT OR COUPLING IN THE EXISTING PIPE IS UNCOVERED AT THE CUT AND CAP LOCATION, THE INSTALLATION OF A PLUG MAY BE PERMITTED, WITH DISTRICT APPROVAL. A CONCRETE THRUST BLOCK SHALL BE INSTALLED AT ALL CUT AND CAP LOCATIONS IN ACCORDANCE WITH THE PROVISIONS OF UDACS PLATE 31.

FIRE FLOW INFORMATION TABLE

USE/OCCUPANCY	A-3, B
TYPE OF CONSTRUCTION	II-B
SQUARE FOOTAGE	44,370 S.F.
LARGEST AREA BETWEEN 4 HOUR WALLS	44,370 S.F.
REQUIRED FIRE FLOW	4,500 GPM
AUTOMATIC FIRE SPRINKLERS	YES
REQUIRED FIRE FLOW WITH 50% REDUCTION	2,250 GPM
BUILDING HEIGHT	30'
# OF STORIES INCLUDING BASEMENT	1
# OF EXISTING HYDRANTS	6

CITY OF LAS VEGAS FIRE & RESCUE
 BY: _____ DATE: _____

- CONSTRUCTION NOTES**
- | | |
|--|---|
| <p>WATER</p> <ol style="list-style-type: none"> INSTALL SERVICE SADDLE (SIZE PER PLAN) PER UDACS PLATE NO. 4 REFER TO PLUMBING PLANS FOR CONTINUATION INSTALL 8" PVC 90° ELBOW WITH THRUST BLOCKS PER UDACS STD. PLATE NO. 31 INSTALL 8" GATE VALVE PER UDACS STD. PLATE NO. 39 INSTALL RELOCATED FIRE HYDRANT PER UDACS STD. PLATE NO. 40 INSTALL 8" RPPA PLATE NO. 56 INSTALL 8" X 8" TEE AND GATE VALVE WITH THRUST BLOCKS PER UDACS STD. PLATE NO. 31, 30, & 39 INSTALL 8" X 8" TEE INSTALL 2" METER PER UDACS PLATE NO. 4 INSTALL 2" RPPA PER UDACS PLATE NO. 8 CUT & CAP EXISTING 6" WATERLINE INSTALL 1.5" METER PER UDACS PLATE NO. 4 (IRREGULAR METER) INSTALL 1.5" RPPA PER UDACS PLATE NO. 8 CURB STOP IN 2" BLOWOFF BOX | <p>SANITARY SEWER (PRIVATE)</p> <ol style="list-style-type: none"> INSTALL 6" CLEAN-OUT PER DCSWS STD. DWG. SD-26 WITH TRAFFIC RATED LD REFER TO PLUMBING PLANS FOR CONTINUATION INSTALL 6" X 6" WYE CONNECT TO EXISTING 6" SANITARY SEWER SUB INSTALL GREASE INTERCEPTOR. REFER TO MECHANICAL PLANS FOR SIZING INSTALL JENSEN PRECAST SAMPLE BOX MODEL EV200 (OR APPROVED EQUAL). REFER TO MECHANICAL PLANS |
|--|---|

APPROVED FOR CONSTRUCTION
 LAS VEGAS VALLEY WATER DISTRICT ENGINEERING SERVICES MANAGER
 DATE: _____ PROJECT NO. 125581
 LVWD APPROVED FIRE FLOW 2,250 GPM AT 20 PSI RESIDUAL

GENERAL NOTE:
 T.Y. LIN INTERNATIONAL ASSUMES NO RESPONSIBILITY FOR EXISTING UTILITY LOCATIONS AND ELEVATIONS SHOWN ON DRAWINGS. THE UTILITIES SHOWN WERE PLOTTED FROM THE BEST AVAILABLE INFORMATION. THE CONTRACTOR IS RESPONSIBLE TO FIELD VERIFY THE LOCATION AND ELEVATION OF ALL UTILITIES PRIOR TO CONSTRUCTION COMMENCEMENT. PRIOR TO CONSTRUCTION CONTRACTOR TO FIELD VERIFY ALL EXISTING SITE CONDITIONS. CONTRACTOR IS TO NOTIFY THE ARCHITECT OR ENGINEER IMMEDIATELY, IF A CONFLICT EXISTS BETWEEN WHAT IS SHOWN ON THESE DRAWINGS AND WHAT EXISTS IN THE FIELD.

BASIS OF BEARING
 SCUTH 00°09'57" EAST, BEING THE BEARING OF THE CENTERLINE OF THIRTIETH STREET AND THE EAST LINE OF THE NORTHEAST QUARTER (NE 1/4) OF THE NORTHWEST QUARTER (NW 1/4) OF SECTION 36, TOWNSHIP 20 SOUTH, RANGE 61 EAST, M.D.M., CLARK COUNTY, NEVADA, AS SHOWN IN FILE 138 OF SURVEYS, PAGE 82, OFFICIAL RECORDS OF CLARK COUNTY, NEVADA.

BENCH-MARK
 CITY OF LAS VEGAS VERTICAL CONTROL POINT "BLV01 36WB", BEING A RIVET AND PLATE IN THE TOP OF CURB @ NW CORNER OF STEWART & 28TH ST.
 ELEVATION: 1830.51 (US SURVEY FEET)
 557.941 (METERS)
 BASED ON NORTH AMERICAN VERTICAL DATUM OF 1988 (NAVD 88).

Call before you Dig
 811
 1-800-227-2600

Call before you UnderGround
 EAST
 1-702-432-5300

Call before you Overhead
 1-702-227-2929

AS BUILT
 CONF. LOG # 057155
 DUBOIS

TYLIN INTERNATIONAL
 4031 DEAN MARTIN DR.
 LAS VEGAS, NV 89103
 P. 702-522-7100
 F. 702-522-7105
 WWW.TYLIN.COM

L-70460