

CONSTRUCTION NOTES:

- ① INSTALL 'A' CURB PER CLARK COUNTY STANDARD DWG #
- ② INSTALL 8" PVC PIPE @ 0.25% SLOPE (PRIVATE)
- ③ INSTALL 3" A.C. PAVING OVER 6" TYPE I OR II BASE
- ④ REMOVE EXIST ROLLED CURB
- ⑤ INSTALL SIDEWALK RAMP PER U.S.D.C.C.A. STD. DWG 235, CASE #1 (A=8.0, B=8.0) (NORTH AND SOUTH RAMPS)
- ⑥ CONSTRUCT CROSS GUTTER PER USD #228

SCALE	1"=20'		
DRAWN BY:	AGS		
CHECKED BY:	BWA		
PROJECT DATE:	05/10/98		
NO.	REVISION	DATE	BY
1	GRABES & SIMON	05-10-98	AGS

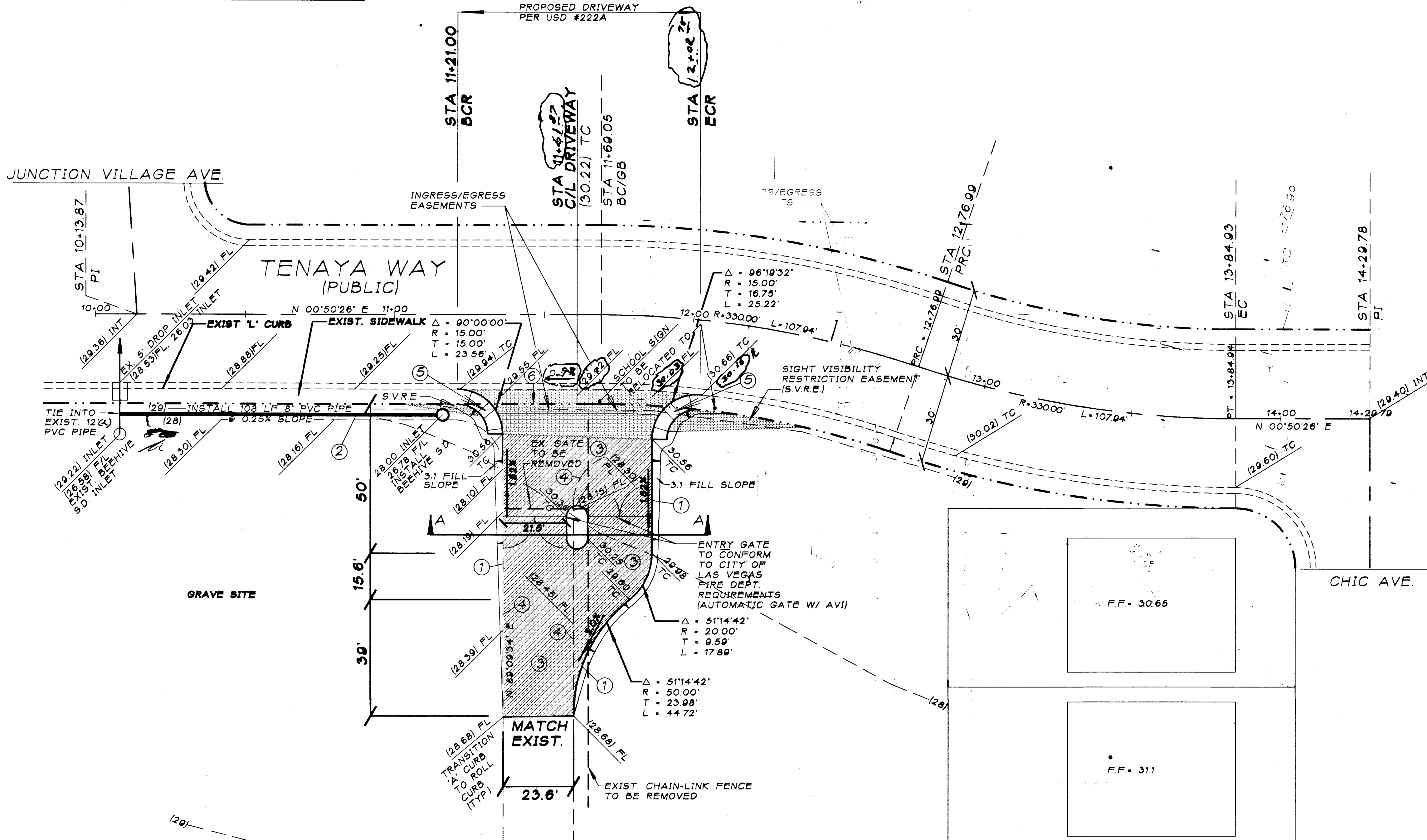
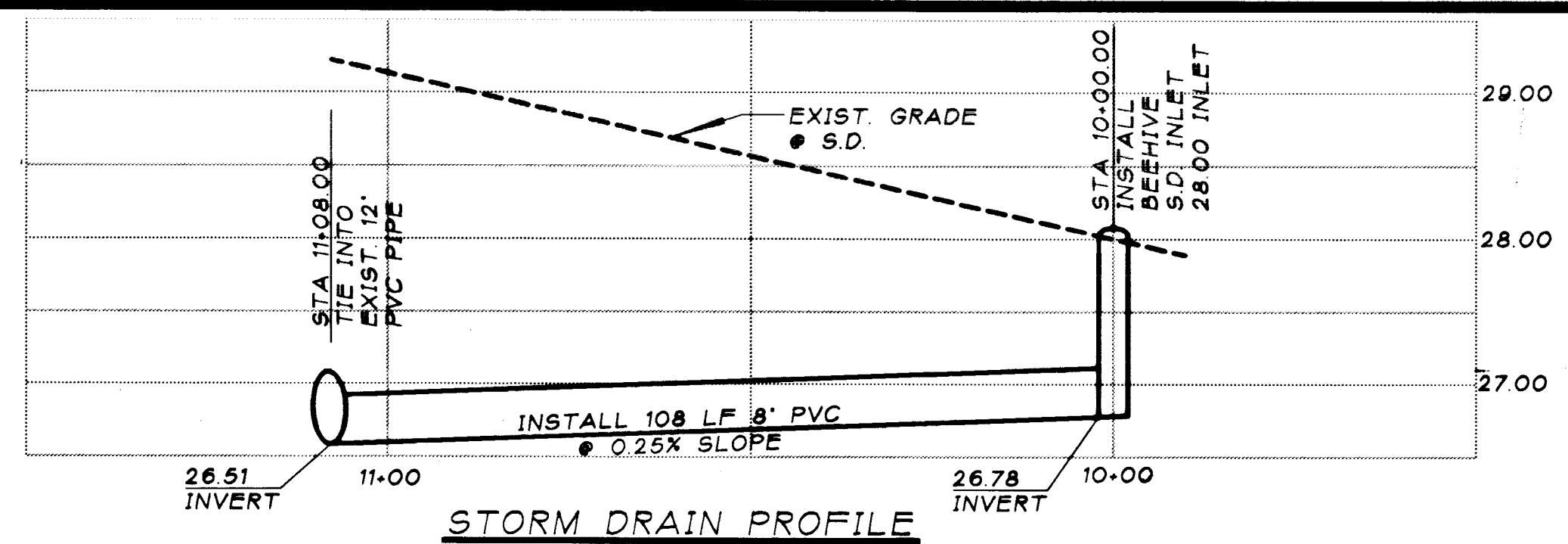
BUNKER BROS MORTUARY DRIVEWAY APPROACH

SEAL

BYRON WAYNE ANDERSON  
C.E. NO. 02703

8787 SHADY PEAK WAY  
LAS VEGAS, NV 89133  
TEL: (702) 265-4257

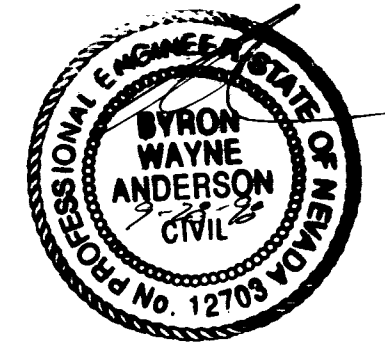
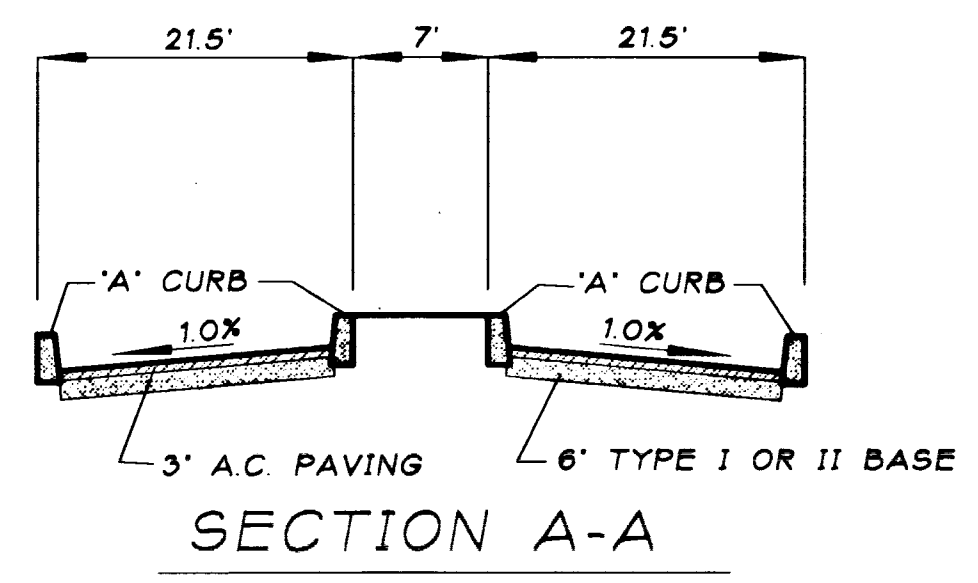
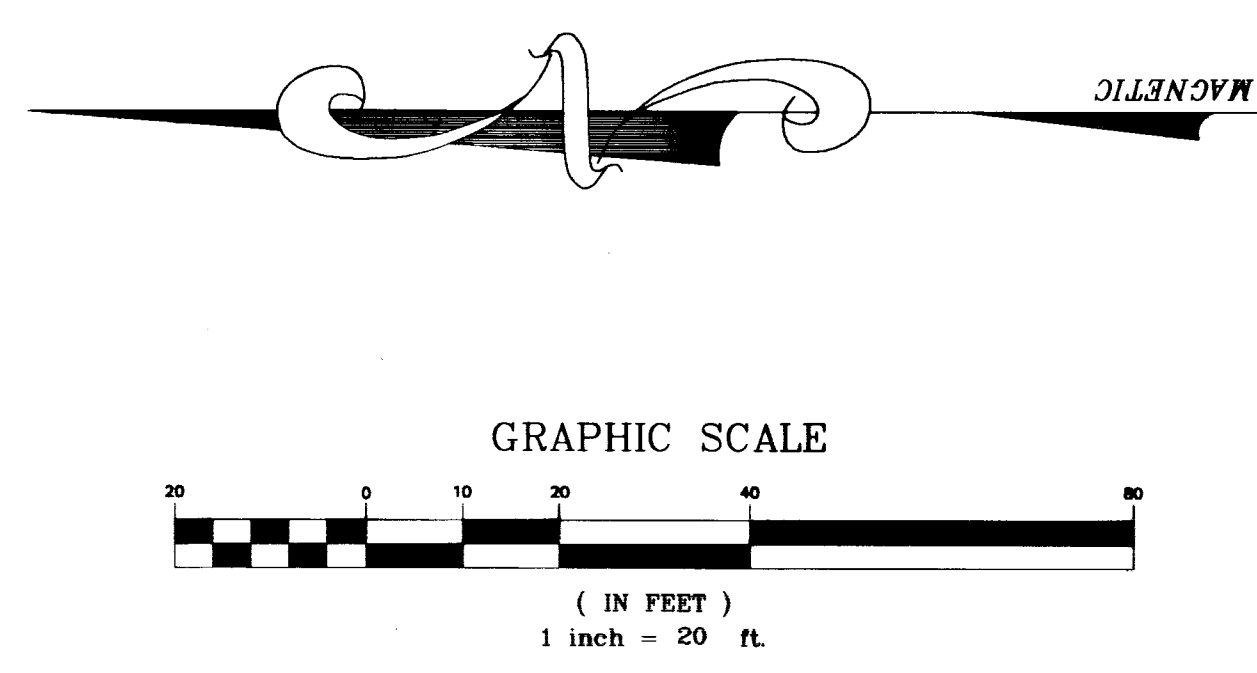
SHEET  
2 OF 2



LEGEND:

FL	FLOW LINE
TC	TOP OF CURB
INV	INVERT ELEVATION
STA	STATION
FF	FINISH FLOOR ELEVATION
(28)	EXISTING CONTOUR
---	PROPOSED CURB
---	EXISTING CURB
[Hatched Box]	INGRESS/EGRESS EASEMENT
---	RIGHT-OF-WAY

QUANTITIES	PUBLIC	PRIVATE
SIDEWALK RAMPS	2 EA.	
CROSS GUTTER	510 SF	
'A' CURB		270 L.F.
18" CMP PIPE		78 L.F.
A.C. PAVING		4,150 SF
BASE		77 CY



Call before  
you dig  
1-800-227-2600

