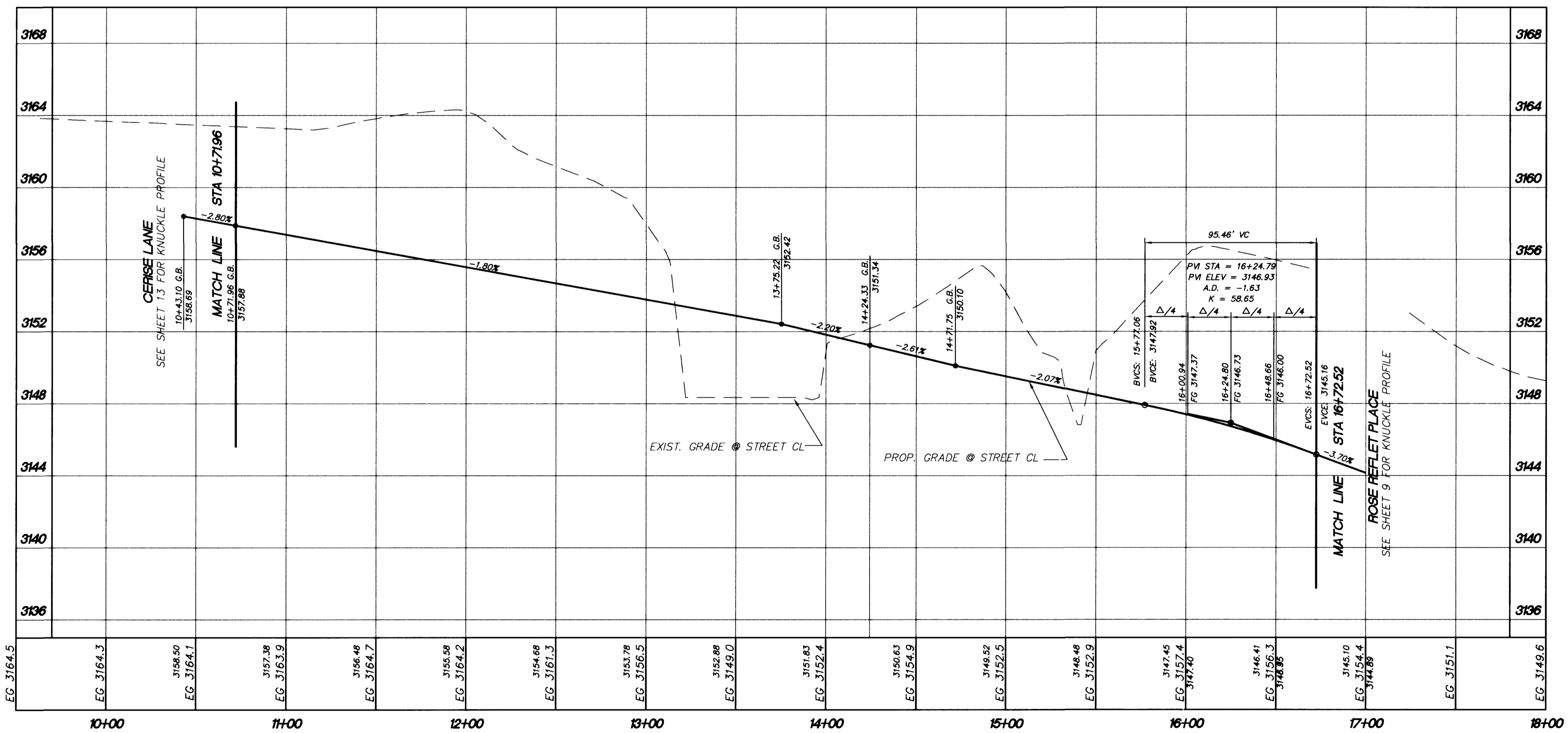


### ANIME DRIVE (PUBLIC)

SCALE - HORIZONTAL 1" = 40'



### ANIME DRIVE (PUBLIC)

SCALE - HORIZONTAL 1" = 40'  
VERTICAL 1" = 4'

#### SIDEWALK RAMP DATA

NO.	"A"	"B"
1	4.5	21.5
2	4.5	15.0
3	4.5	9.5
4	8.0	8.0
5	9.5	4.5
6	21.5	4.5

CASE III

Avoid overhead power line contact.  
**Call before you Overhead**  
1-702-593-6111  
NEVADA POWER ENVIRONMENT SAFETY SERVICES DEPARTMENT

Avoid cutting underground utility lines. It's costly.  
**Call before you Dig**  
1-800-227-2600  
UNDERGROUND SERVICE (USA)

**BENCHMARK**  
BEING CONTROL POINT #199 AS SHOWN ON THE RECORD OF SURVEY IN FILE 85 OF SURVEYS, PAGE 17.  
ELEVATION OF 3107.63 SUMMERLIN DATUM (SUMMERLIN DATUM + 2.20 = NAVD 88)  
CLV BENCHMARK NO. CLV09365ES  
RIVET AND PLATE IN TOP OF CURB  
N.E. RETURN OF CHARLESTON BOULEVARD AND HUALAPAI WAY  
ELEVATION:  
NAVD 88 = 2912.23  
SUMMERLIN = 2912.05

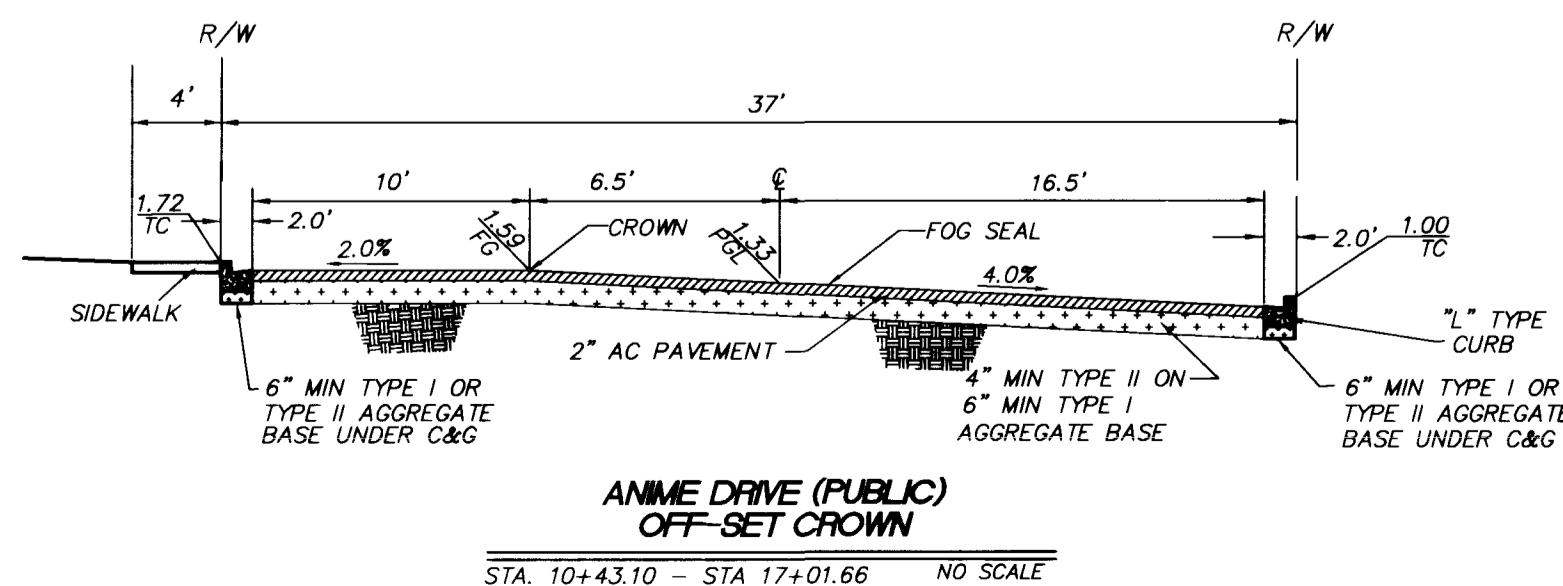
#### BASIS OF BEARING:

BEING THE CENTERLINE OF LAUREL GLEN DRIVE AS SHOWN ON THE MAP OF THE ARBORS AT SUMMERLIN VILLAGE 11/12, UNIT NO. 3 A-B, AS SHOWN ON THE MAP IN BOOK 78, OF PLATS, PAGE 82, OFFICIAL RECORDS OF CLARK COUNTY, NEVADA, WHICH BEARS NORTH 71°19'54" EAST.

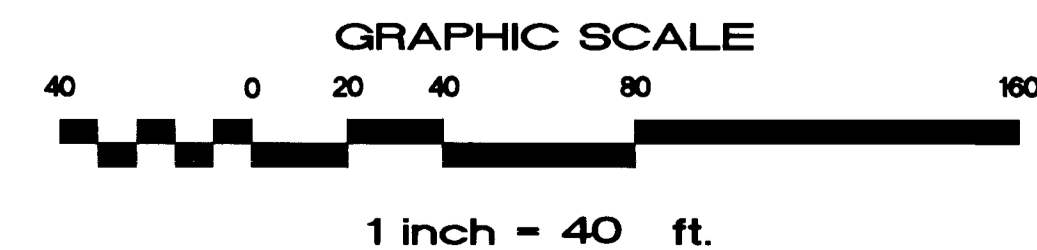
#### LEGAL DESCRIPTION:

LOT 3 AS SHOWN ON THE FINAL MAP OF "THE ARBORS AT SUMMERLIN VILLAGE 11/12 UNIT NO. 3 A-B" AS RECORDED IN BOOK 78 OF PLATS, PAGE 82, BEING A PORTION OF SECTIONS 23 AND 25, TOWNSHIP 20 SOUTH, RANGE 39 EAST, N.D.M., CITY OF LAS VEGAS, CLARK COUNTY, NEVADA.

AP.N. 137-26-51-001



ANIME DRIVE (PUBLIC)  
OFF-SET CROWN  
STA. 10+43.10 - STA 17+01.66 NO SCALE



<b>KAUFMAN BROAD</b> 4755 INDUSTRIAL ROAD LAS VEGAS, NV 89103 (702) 261-1900		<b>HUNSAKER &amp; ASSOCIATES</b> PLANNING SURVEYING SANITARY ENGINEERING LAS VEGAS, NEVADA 401 N. BUREAU DR. SUITE 100, LAS VEGAS, NEVADA 89108 (702) 242-4500	
PLAN + PROFILE-ANIME DRIVE CITY OF LAS VEGAS NEVADA		BROOKFIELD "PARCEL U" PHASE I AND II - SUMMERLIN	
DRAWN BY: A. IMPERIAL	DESIGNED BY: C. PEREZ	CHECKED BY: PROJECT NO. 1506-30	SCALE: 1" = 40' 1" = 4'
SHEET PP4 12 OF 22 1014-4545-1#2		SEAL 	

