

TREASURE MOUNTAIN COURT  
SEE SHEET 28

SINGING VIEW COURT  
SEE SHEET 28

CRYSTAL CLOUD AVENUE  
EXIST. SEWER

**SWEEPING VALLEY STREET**  
( PRIVATE STREET, P.U.E. & CLV SEWER EASEMENT  
& PUBLIC DRAINAGE EASEMENT )

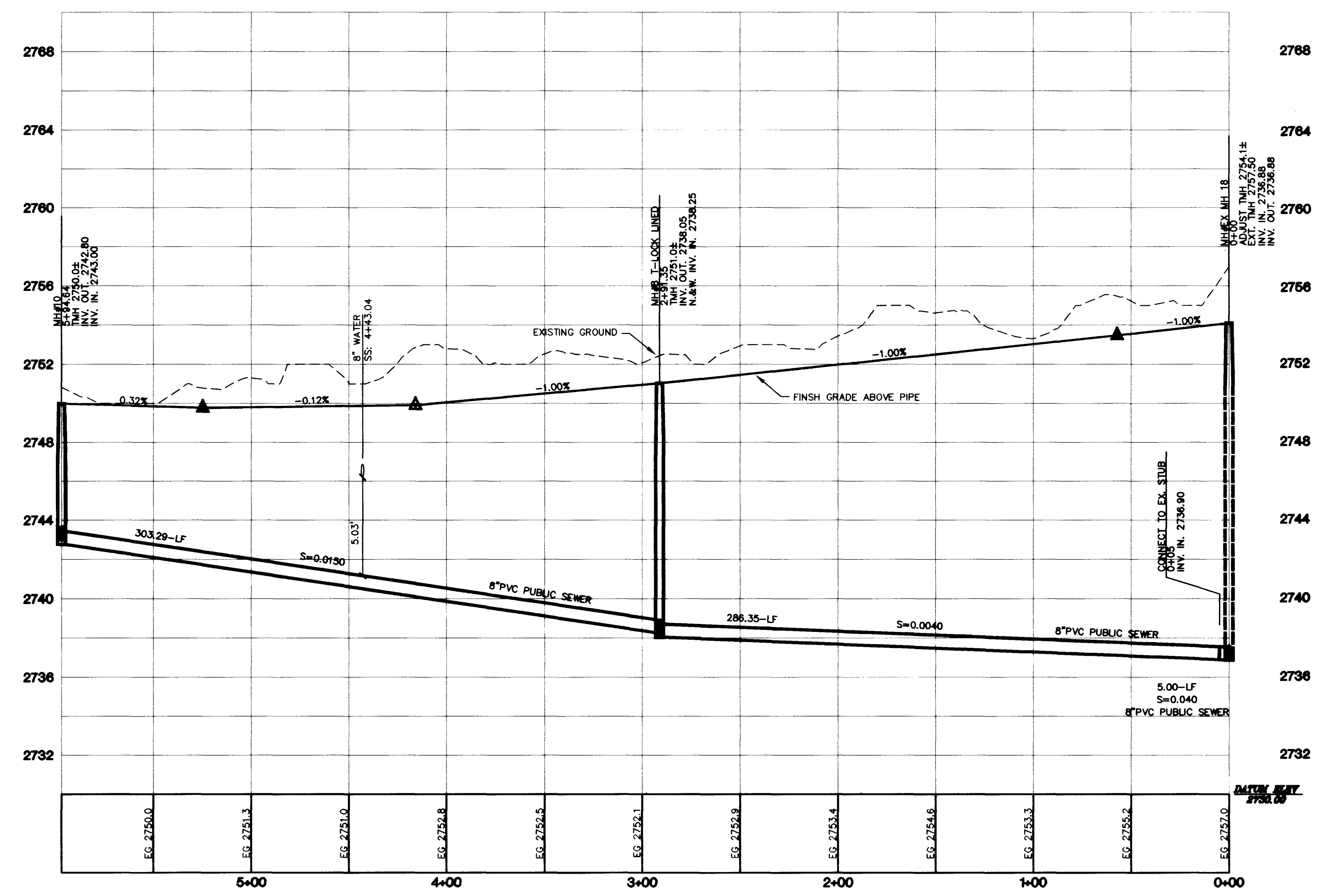
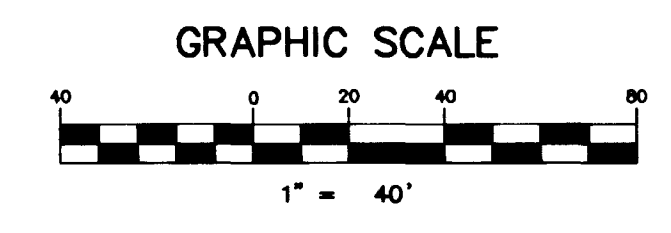
**BASIS OF BEARING**  
NORTH 89°32'44" WEST, BEING THE SOUTH LINE OF THE  
SOUTHEAST QUARTER (SE 1/4) OF SECTION 12, TOWNSHIP  
20 SOUTH, RANGE 59 EAST, M.D.M., CITY OF LAS VEGAS,  
CLARK COUNTY, NEVADA, AS SHOWN ON THAT CERTAIN  
MAP ON FILE IN THE OFFICE OF THE COUNTY RECORDER,  
CLARK COUNTY, NEVADA IN FILE 81 OF SURVEYS,  
AT PAGE 44.

**BENCHMARK**  
CLARK COUNTY BENCHMARK: 1C00654  
RIVT & SQUARE PLATE IN A CONCRETE MONUMENT 50'  
NORTH AND 25' WEST OF GRAND CANYON DRIVE AND  
ALEXANDER ROAD.  
ELEVATION=792.992 METERS (NAVD 88)  
ELEVATION=2601.67 FEET (NAVD 88 DATUM)

Call before you Dig  
1-800-227-2600

Call before you Overhead  
1-702-593-6111

NOTE:  
CONTRACTOR SHALL VERIFY HORIZONTAL AND  
VERTICAL LOCATION OF EXISTING UTILITIES AND  
NOTIFY THE DESIGN ENGINEER IMMEDIATELY OF  
ANY DISCREPANCIES PRIOR TO CONSTRUCTION.



NOTE:  
ALL STATIONING IS BASED ON SEWER  
LENGTHS FROM MANHOLE TO MANHOLE.

NOTE:  
ALL ONSITE STREETS  
ARE PRIVATELY OWNED  
AND MAINTAINED.

<p><b>PERMA-BILT HOMES</b> 7150 POLLOCK DRIVE, SUITE 104 LAS VEGAS, NEVADA 89119 (702) 399-9100</p>		<p>2727 SOUTH RAINBOW BOULEVARD, LAS VEGAS, NEVADA 89102-5146 PH. (702) 873-7550 FAX (702) 362-2597</p>	
<p><b>SEWER PLAN &amp; PROFILE</b></p>		<p><b>SWEEPING VALLEY STREET</b></p>	
<p><b>CHEYENNE / HUALAPA UNIT 3</b></p>		<p><b>UNIT 3</b></p>	
<p>DRAWN BY: DOUGLAS E. HAMMOND</p>	<p>DESIGNED BY: JOHN MCCARTNEY</p>	<p>CHECKED BY:</p>	<p>PROJECT NO: 5016-3P-3</p>
<p>MAY 98</p>	<p>APRIL 98</p>	<p>SCALE: 1"=4'</p>	<p>HORIZ. 1"=4'</p>
<p>SEAL</p>		<p>PROFESSIONAL ENGINEER STATE OF NEVADA</p>	
<p>JOSEPH D. THOMASON</p>		<p>CIVIL</p>	
<p>NO. 11907</p>		<p>DATE: 9/9/97</p>	
<p>SHEET 27 OF 28 SHEETS</p>		<p>DRAWING NO. 3074-4524-3</p>	

