

Call before you Dig
1-800-227-2600

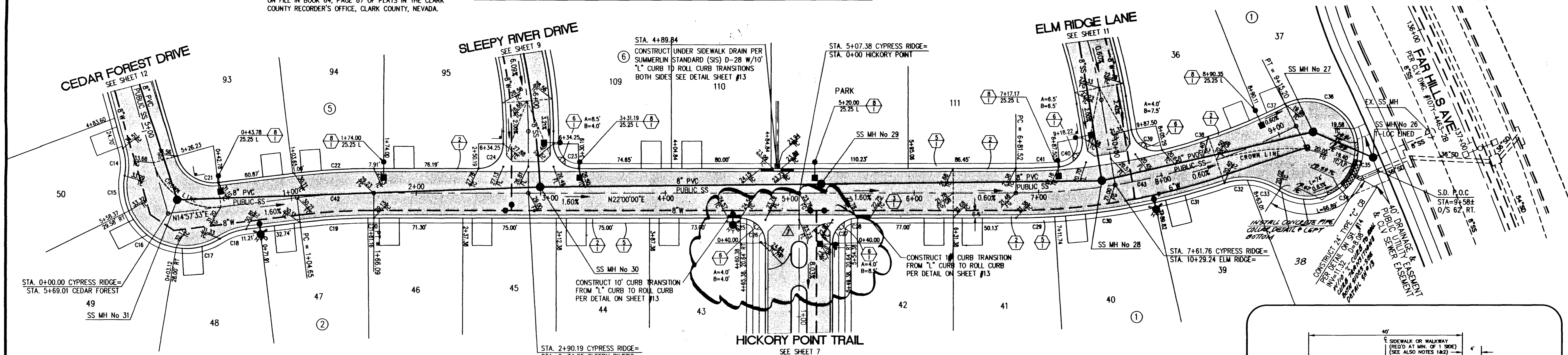
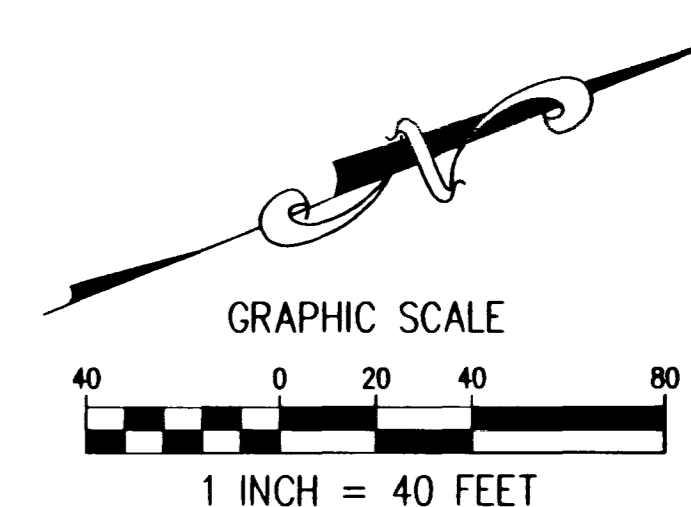
SAFETY ALERT
Call before you Overhead
593-6111

BENCHMARK:
CITY OF LAS VEGAS BENCHMARK
OLV001954 RIVET & PLATE IN TOP OF CURB NW
SIDE OF TOWN CENTER DRIVE & SOUTH CIRCLE ISLAND
2728.37 NAVD 1988 DATUM (831.6074 M)
BASIS OF BEARINGS:
NORTH 15°23'46" EAST BEING THE BEARING OF THE
CENTERLINE OF ANASAZI DRIVE AS SHOWN BY MAP THEREOF
ON FILE IN BOOK 64, PAGE 67 OF PLATS IN THE CLARK
COUNTY RECORDER'S OFFICE, CLARK COUNTY, NEVADA.

BACK OF CURB CURVE DATA

CURVE	RADIUS	LENGTH	TANGENT	DELTA	CURVE	RADIUS	LENGTH	TANGENT	DELTA
C14	50.00'	22.55'	11.47'	25°50'31"	C28	20.00'	5.05'	2.54'	14°28'38"
C15	50.00'	29.04'	14.94'	33°16'56"	C29	520.00'	31.44'	15.72'	0°27'49"
C16	50.00'	50.09'	27.38'	57°24'11"	C30	520.00'	81.20'	40.60'	08°56'47"
C17	50.00'	36.73'	19.24'	42°05'40"	C31	520.00'	58.01'	29.04'	06°23'50"
C18	50.00'	22.55'	11.47'	25°50'31"	C32	50.00'	18.17'	9.44'	21°23'28"
C19	480.00'	54.28'	27.16'	06°28'35"	C33	50.00'	27.53'	14.13'	31°33'10"
C20	480.00'	4.73'	2.36'	00°33'52"	C34	40.50'	73.98'	52.46'	104°39'47"
C21	30.00'	42.46'	25.87'	81°05'48"	C35	40.50'	30.54'	16.04'	33°12'12"
C22	520.00'	63.90'	31.98'	07°02'27"	C36	40.50'	65.78'	33.03'	33°03'12"
C23	20.00'	31.42'	20.00'	90°00'00"	C37	480.00'	24.08'	12.04'	02°52'30"
C24	20.00'	31.42'	20.00'	90°00'00"	C38	480.00'	81.43'	40.81'	09°43'11"
C25	20.00'	5.05'	2.54'	14°28'38"	C39	20.00'	33.18'	21.82'	94°59'19"
C26	20.00'	26.36'	15.49'	75°31'21"	C40	20.00'	33.18'	21.82'	94°59'19"
C27	20.00'	26.36'	15.49'	75°31'21"	C41	480.00'	35.24'	17.63'	04°12'22"

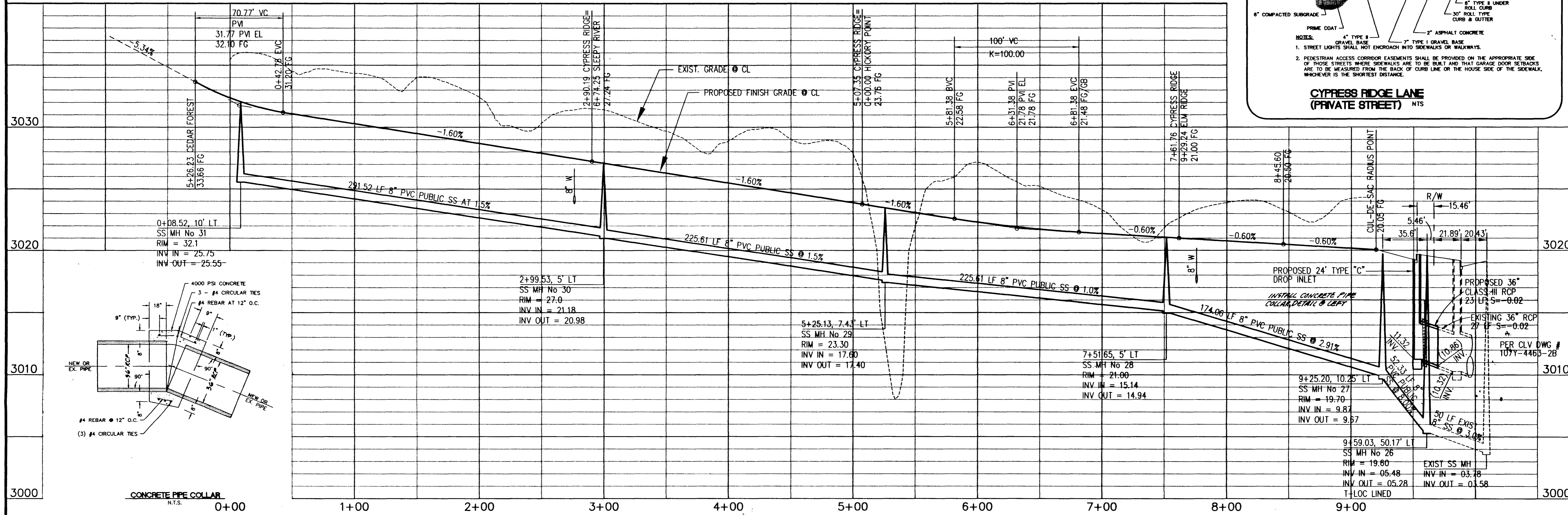
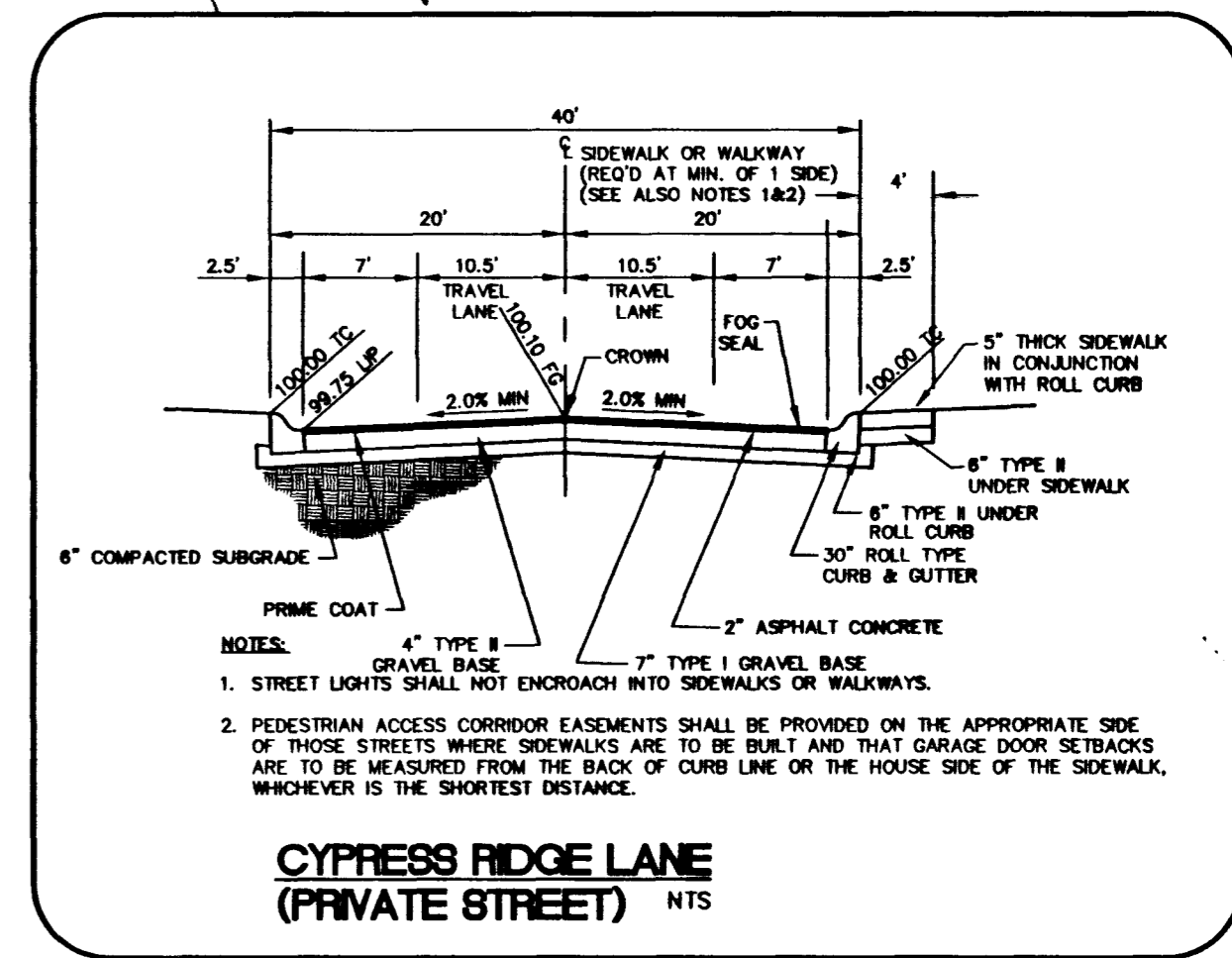
- CONSTRUCTION NOTES:**
- 1. INSTALL "A" TYPE CURB PER SUMMERLIN STD. DWG. #S-50
 - 2. INSTALL 30" ROLL CURB PER SUMMERLIN STD. DWG. #S-48
 - 3. INSTALL AC PAVEMENT PER SECTION
 - 4. INSTALL CROSS CUTTER PER SUMMERLIN STD. DWG. #S-64
 - 5. INSTALL SIDEWALK PER SUMMERLIN STD. DWG. #S-72
 - 6. INSTALL SIDEWALK RAMP PER SUMMERLIN STD. DWG. #S-77
 - 7. INSTALL STREET NAME SIGN
 - 8. INSTALL STREET LIGHT



CENTERLINE CURVE DATA

CURVE	RADIUS	LENGTH	TANGENT	DELTA
C42	500.00'	61.44'	30.76'	07°02'27"
C43	500.00'	233.68'	119.01'	26°46'40"

CYPRESS RIDGE LANE
(PRIVATE STREET, PUE, CLV SEWER EASEMENT)



REVISIONS

No.	Date	Description
1	7-18-98	ADDED ENTRY GATE

DESIGNED: C&B
DRAWN: C&B
CHECKED: RPT
JOB No.: 989034010
HORIZ: 1"=40'
VERT: 1"=4'
DATE: 8/18/97

Carter :: Burgess
Consultants in Planning, Engineering, Architecture,
Construction Management and Related Services
2655 East Sunset Road, Suite 105
Las Vegas, NV 89120
(702) 798-1007 Fax (702) 798-7056

PROJECT: THE ARBORS
DESCRIPTION: PARCELS 0 & P
BREAMOR HEIGHTS - PHASE II
CYPRESS RIDGE LANE

Pulte Homes
An American Favorite

PER CLV DWG # 1077-4463-2B

8
8 of 14

L:\P\031\DESIGN\PH2\031p02.dwg Min Dec 22 10:31:44 1997 MERA

10715

1074-4501-2

