

**BENCHMARK:**  
CITY OF LAS VEGAS BENCHMARK  
OLV001954 RIVET & PLATE IN TOP OF CURB NW  
SIDE OF TOWN CENTER DRIVE & SOUTH CIRCLE ISLAND  
2728.37 NAVD 1988 DATUM (831.6074 M)

**BASIS OF BEARINGS:**  
NORTH 15°23'46" EAST BEING THE BEARING OF THE  
CENTERLINE OF ANASAZI DRIVE AS SHOWN BY MAP THEREOF  
ON FILE IN BOOK 64, PAGE 67 OF PLATS IN THE CLARK  
COUNTY RECORDER'S OFFICE, CLARK COUNTY, NEVADA.

- CONSTRUCTION NOTES:**
- 1. INSTALL "A" TYPE CURB PER SUMMERLIN STD. DWG. #5-50
  - 2. INSTALL 30" ROLL CURB PER SUMMERLIN STD. DWG. #5-48
  - 3. INSTALL AC PAVEMENT PER SECTION
  - 4. INSTALL CROSS GUTTER PER SUMMERLIN STD. DWG. #5-64
  - 5. INSTALL SIDEWALK PER SUMMERLIN STD. DWG. #5-72
  - 6. INSTALL SIDEWALK RAMP PER SUMMERLIN STD. DWG. #5-77
  - 7. INSTALL STREET NAME SIGN
  - 8. INSTALL STREET LIGHT
  - 9. INSTALL "L" TYPE CURB AND GUTTER PER SUMMERLIN STD DWG #5-47

**BACK OF CURB CURVE DATA**

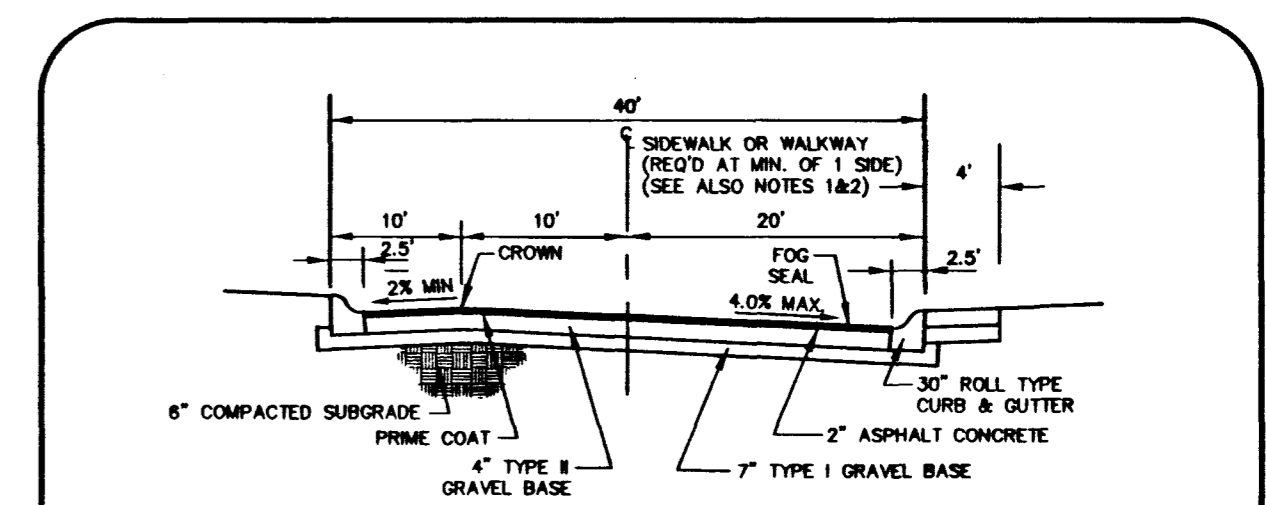
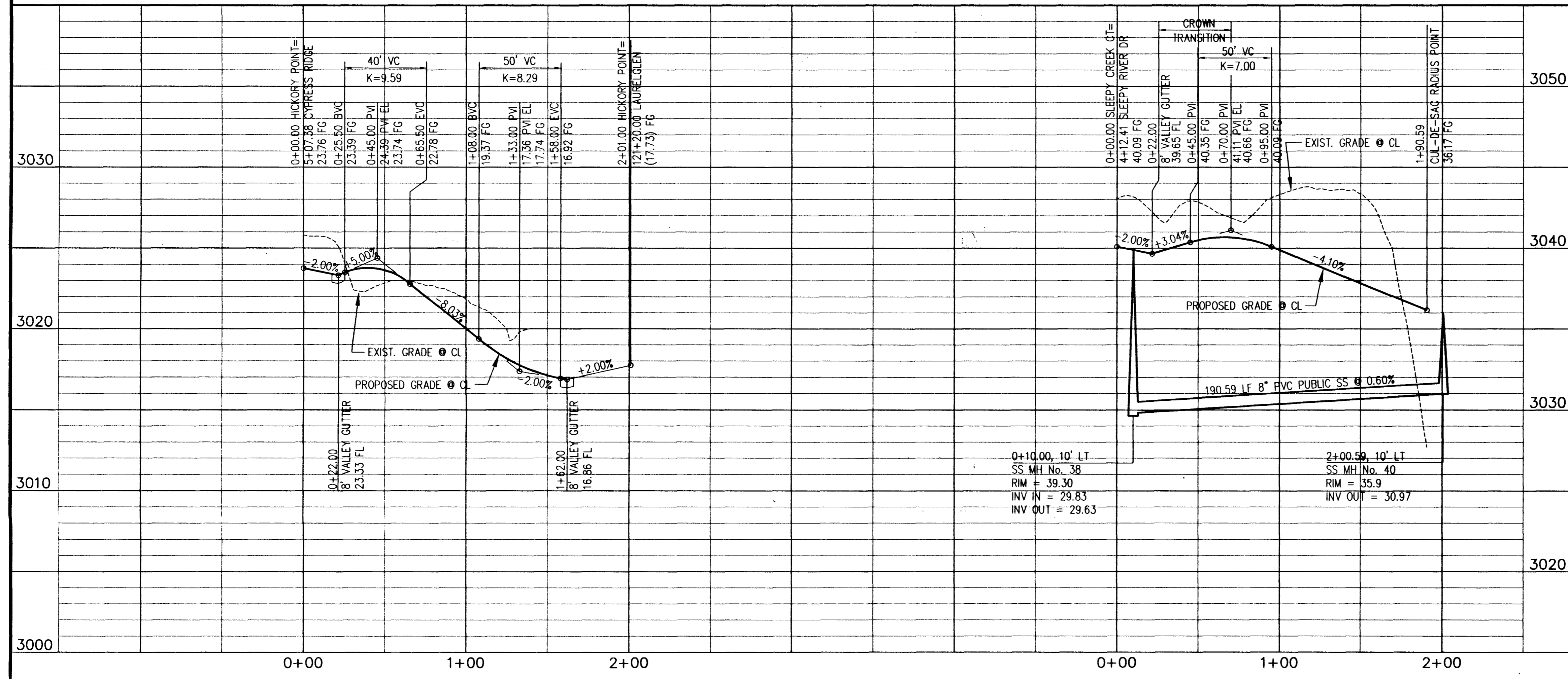
CURVE	RADIUS	LENGTH	TANGENT	DELTA
C1	30.00'	47.12'	30.00'	90°00'00"
C2	20.00'	26.36'	15.49'	75°31'21"
C3	20.00'	5.05'	2.54'	14°28'59"
C4	20.00'	5.05'	2.54'	14°28'59"
C5	20.00'	26.36'	15.49'	75°31'21"
C6	30.00'	47.12'	30.00'	90°00'00"
C7	20.00'	31.42'	20.00'	90°00'00"
C8	20.00'	16.97'	9.03'	48°36'43"
C9	40.50'	23.65'	12.17'	33°27'34"
C10	40.50'	64.20'	41.09'	90°49'45"
C11	40.50'	97.98'	107.21'	138°38'43"
C12	20.00'	16.97'	9.03'	48°36'43"
C13	20.00'	31.42'	20.00'	90°00'00"
C14	40.50'	10.12'	5.09'	14°19'23"

## HICKORY POINT TRAIL

(PRIVATE STREET, PUE, CLV SEWER EASEMENT)

## SLEEPY CREEK COURT

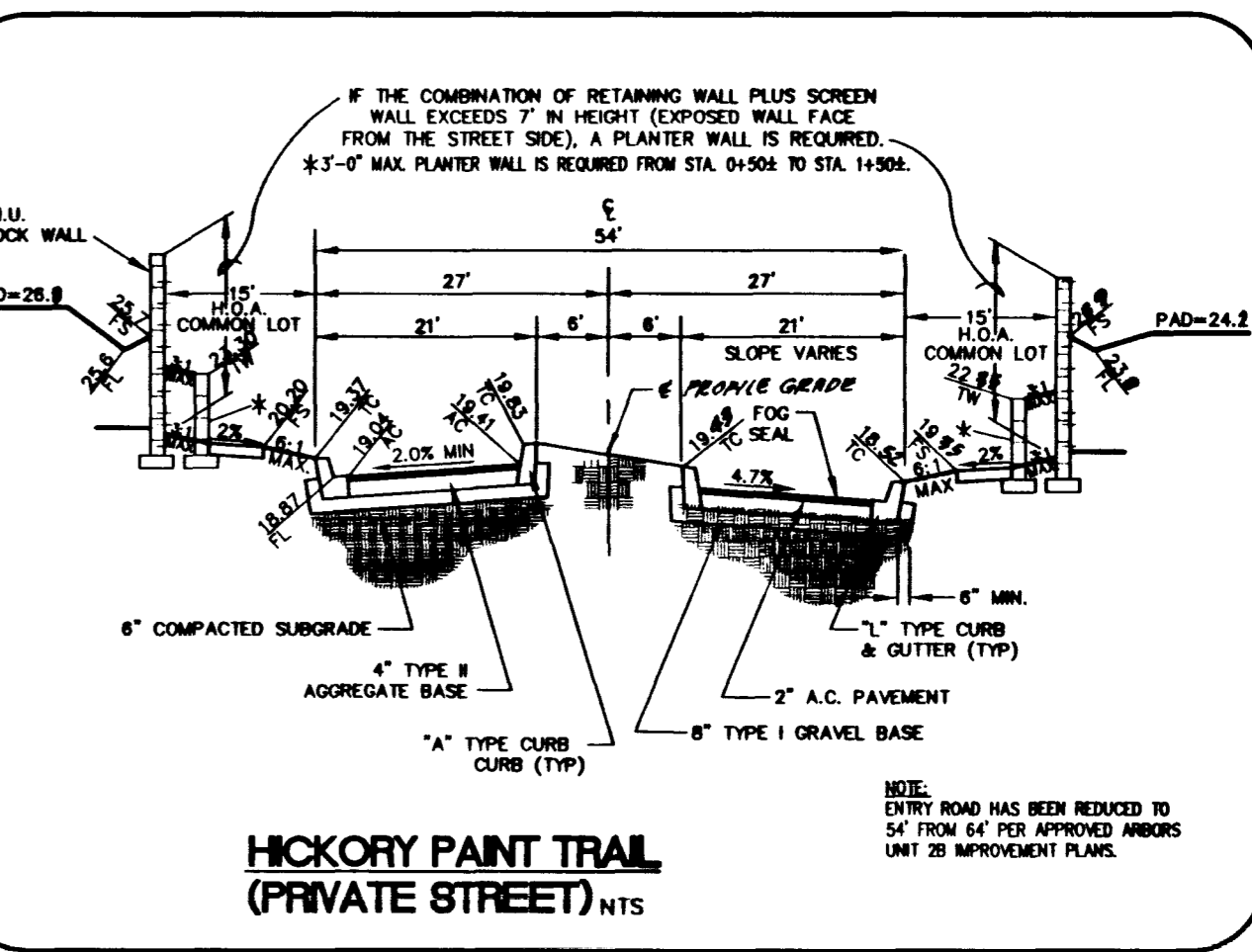
(PRIVATE STREET, PUE, CLV SEWER EASEMENT)



**NOTES:**

- STREET LIGHTS SHALL NOT ENCRUSH INTO SIDEWALKS OR WALKWAYS.
- PUBLIC SIDEWALK EASEMENTS SHALL BE PROVIDED ON THE APPROPRIATE SIDE OF THOSE PUBLIC STREETS WHERE SIDEWALKS ARE TO BE BUILT AND THAT GARAGE DOOR SETBACKS ARE TO BE MEASURED FROM THE RIGHT-OF-WAY LINE OR THE HOUSE SIDE OF THE SIDEWALK, WHICHEVER IS THE SHORTEST DISTANCE.

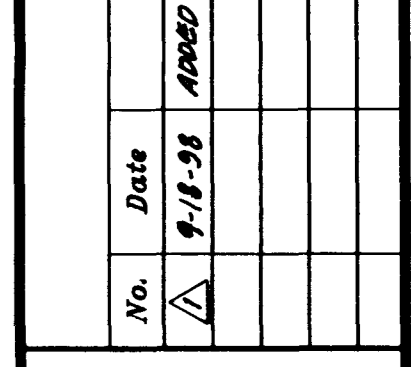
**SLEEPY CREEK COURT  
OFFSET CROWN (PRIVATE STREET) NTS**



**HICKORY POINT TRAIL  
(PRIVATE STREET) NTS**

**REVISIONS**

No.	Date	Description
1	9-18-98	APPROD ENTRY GATE



DESIGNED: CMB  
DRAWN: CMB  
CHECKED: RWJ  
JOB NO: 987054010  
HORIZ: 1"=40'  
VERT: 1"=4'  
DATE: 8/18/97

**Carter Burgess**  
Consultants in Planning, Engineering, Architecture,  
Construction Management and Related Services  
2655 East Sunset Road, Suite 105  
Las Vegas, NV 89120  
(702) 798-1007 Fax (702) 798-7056

PROJECT: THE ARBORS  
PARCELS 0 & P  
DESCRIPTION: BREAMOR HEIGHTS - PHASE II  
HICKORY POINT TRAIL & SLEEPY CREEK COURT  
SHEET 7 OF 14

