



**BENCHMARK:**  
CITY OF LAS VEGAS BENCHMARK  
QLV001954 RIVET & PLATE IN TOP OF CURB NW  
SIDE OF TOWN CENTER DRIVE & SOUTH CIRCLE ISLAND  
2728.37 NAVD 1988 DATUM (831.6074 M)

**BASIS OF BEARINGS:**  
NORTH 15°23'46" EAST BEING THE BEARING OF THE  
CENTERLINE OF ANASAZI DRIVE AS SHOWN BY MAP THEREOF  
ON FILE IN BOOK 64, PAGE 67 OF PLATS IN THE CLARK  
COUNTY RECORDER'S OFFICE, CLARK COUNTY, NEVADA.

$\Delta = 20'08''06''$   
 $R = 2540.00'$   
 $T = 450.96'$   
 $L = 892.62'$

$\Delta = 12'21''11''$   
 $R = 278.00'$   
 $T = 30.09'$   
 $L = 59.94'$

$\Delta = 09'46''21''$   
 $R = 322.00'$   
 $T = 27.53'$   
 $L = 54.92'$

$\Delta = 04'27''43''$   
 $R = 2529.00'$   
 $T = 98.52'$   
 $L = 196.95'$

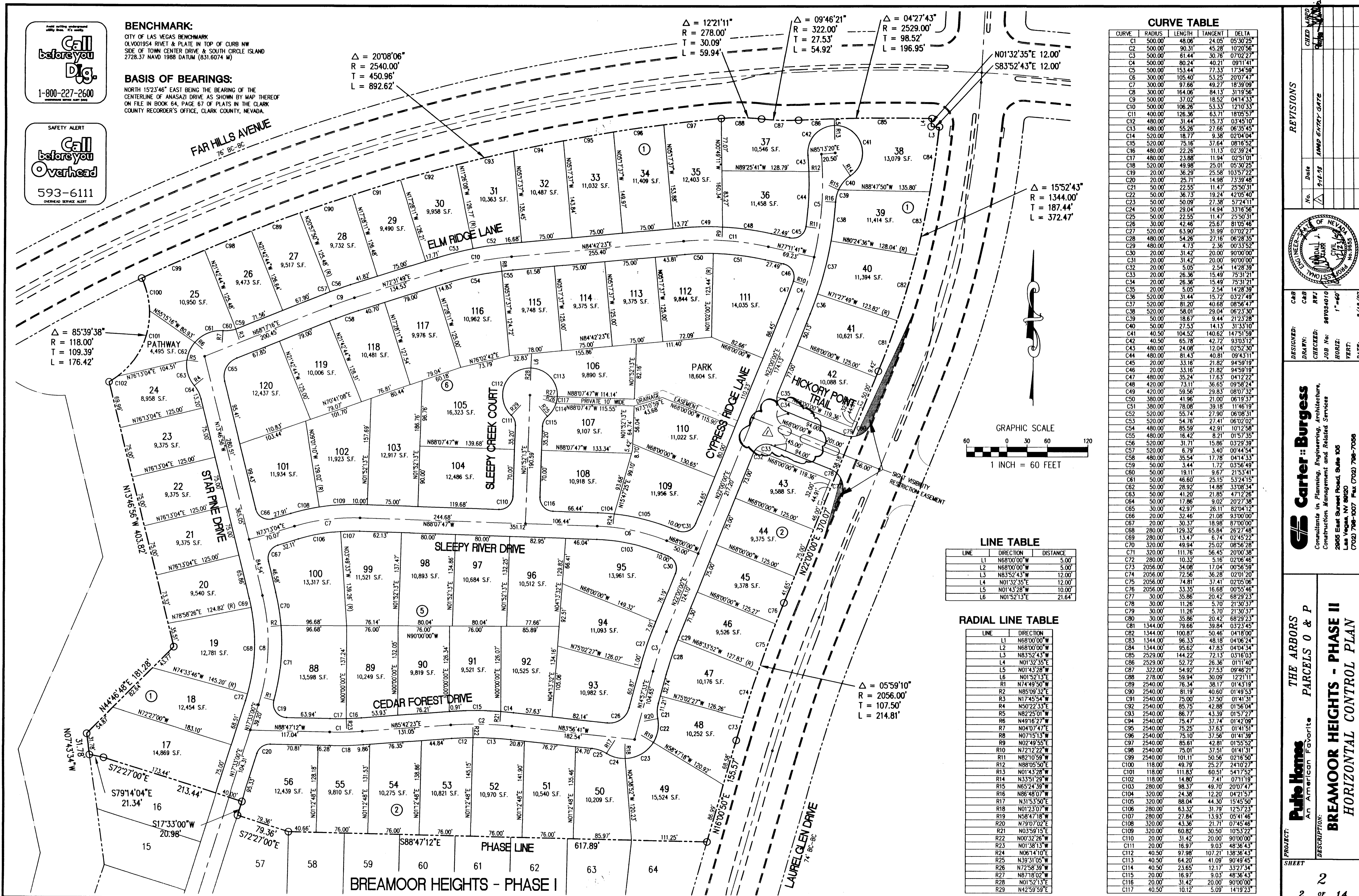
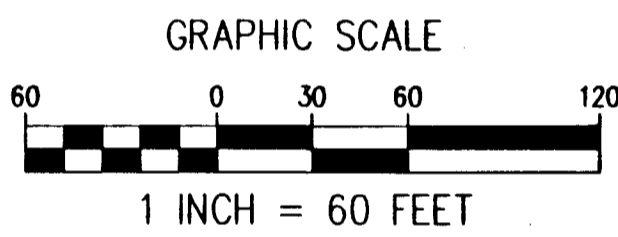
$\Delta = 15'52''43''$   
 $R = 1344.00'$   
 $T = 187.44'$   
 $L = 372.47'$

$\Delta = 85'39''38''$   
 $R = 118.00'$   
 $T = 109.39'$   
 $L = 176.42'$

CURVE TABLE				
CURVE	RADIUS	LENGTH	TANGENT	DELTA
C1	500.00'	48.06'	24.05'	05°30'25"
C2	500.00'	90.31'	45.28'	10°20'56"
C3	500.00'	61.44'	30.76'	07°02'27"
C4	500.00'	80.24'	40.21'	09°11'41"
C5	500.00'	153.44'	77.33'	17°34'59"
C6	300.00'	105.40'	53.25'	20°07'47"
C7	300.00'	97.66'	49.27'	18°39'09"
C8	300.00'	164.06'	84.13'	31°19'56"
C9	500.00'	37.02'	18.52'	04°14'33"
C10	500.00'	106.26'	53.33'	12°10'33"
C11	400.00'	126.36'	63.71'	18°05'57"
C12	480.00'	31.44'	15.73'	03°45'10"
C13	480.00'	55.26'	27.66'	06°33'45"
C14	520.00'	18.77'	9.38'	02°04'04"
C15	520.00'	75.16'	37.64'	08°16'52"
C16	480.00'	22.26'	11.13'	02°39'24"
C17	480.00'	23.88'	11.94'	02°51'01"
C18	520.00'	49.98'	25.01'	05°30'25"
C19	20.00'	36.29'	25.58'	10°57'22"
C20	20.00'	25.71'	14.98'	7°33'48"
C21	50.00'	22.55'	11.47'	25°50'31"
C22	50.00'	36.73'	19.24'	42°05'40"
C23	50.00'	50.09'	27.38'	57°24'11"
C24	50.00'	29.04'	14.94'	33°16'56"
C25	50.00'	22.55'	11.47'	25°50'31"
C26	30.00'	42.46'	25.67'	81°05'46"
C27	520.00'	63.90'	31.99'	07°02'27"
C28	480.00'	54.26'	27.16'	06°28'35"
C29	480.00'	4.73'	2.36'	00°33'52"
C30	20.00'	31.42'	20.00'	90°00'00"
C31	20.00'	31.42'	20.00'	90°00'00"
C32	20.00'	5.05'	2.54'	14°28'39"
C33	20.00'	26.36'	15.49'	75°31'21"
C34	20.00'	26.36'	15.49'	75°31'21"
C35	20.00'	5.05'	2.54'	14°28'39"
C36	520.00'	31.44'	15.73'	03°45'10"
C37	520.00'	81.20'	40.68'	08°56'41"
C38	520.00'	58.01'	29.08'	06°23'50"
C39	50.00'	8.44'	4.22'	21°12'08"
C40	50.00'	27.53'	13.77'	31°33'10"
C41	40.50'	104.52'	52.26'	14°17'55"
C42	40.50'	65.78'	32.89'	9°30'12"
C43	480.00'	24.08'	12.04'	02°52'30"
C44	480.00'	81.43'	40.81'	09°43'11"
C45	20.00'	33.16'	21.82'	94°59'19"
C46	20.00'	33.16'	21.82'	94°59'19"
C47	480.00'	35.24'	17.63'	04°12'22"
C48	420.00'	73.11'	36.65'	09°58'24"
C49	420.00'	59.56'	29.83'	08°07'32"
C50	380.00'	41.96'	21.00'	06°19'37"
C51	380.00'	78.08'	39.18'	11°46'19"
C52	520.00'	55.74'	27.90'	06°08'31"
C53	520.00'	54.76'	27.41'	06°02'02"
C54	480.00'	85.59'	42.91'	10°12'58"
C55	480.00'	16.42'	8.21'	01°57'35"
C56	520.00'	31.71'	15.86'	03°29'39"
C57	520.00'	6.79'	3.40'	00°44'54"
C58	480.00'	35.54'	17.78'	04°14'33"
C59	50.00'	3.44'	1.72'	03°56'49"
C60	50.00'	19.11'	9.67'	21°53'41"
C61	50.00'	46.60'	25.15'	53°24'15"
C62	50.00'	28.92'	14.88'	33°08'34"
C63	50.00'	41.20'	21.85'	47°12'28"
C64	50.00'	17.86'	9.02'	20°27'38"
C65	30.00'	42.97'	26.11'	82°04'12"
C66	20.00'	32.46'	21.08'	93°00'00"
C67	20.00'	30.37'	18.98'	87°00'00"
C68	280.00'	129.32'	65.84'	26°27'48"
C69	280.00'	13.47'	6.74'	02°45'22"
C70	320.00'	49.94'	25.02'	08°56'28"
C71	320.00'	111.76'	56.45'	20°00'38"
C72	280.00'	10.32'	5.16'	02°06'46"
C73	2056.00'	34.08'	17.04'	00°56'59"
C74	2056.00'	72.56'	36.28'	02°01'20"
C75	2056.00'	74.81'	37.41'	02°05'06"
C76	2056.00'	33.35'	16.68'	00°55'46"
C77	30.00'	35.86'	20.42'	68°29'23"
C78	30.00'	11.26'	5.70'	21°30'37"
C79	30.00'	11.26'	5.70'	21°30'37"
C80	30.00'	35.86'	20.42'	68°29'23"
C81	1344.00'	79.66'	39.84'	03°23'45"
C82	1344.00'	100.87'	50.46'	04°18'00"
C83	1344.00'	96.33'	48.18'	04°06'24"
C84	1344.00'	95.62'	47.83'	04°04'34"
C85	2529.00'	144.22'	72.13'	03°16'03"
C86	2529.00'	52.72'	26.36'	01°11'40"
C87	322.00'	54.92'	27.53'	09°46'21"
C88	278.00'	59.94'	30.09'	12°21'11"
C89	2540.00'	76.34'	38.17'	01°43'19"
C90	2540.00'	81.19'	40.60'	01°43'53"
C91	2540.00'	75.00'	37.50'	01°41'31"
C92	2540.00'	85.75'	42.88'	01°56'04"
C93	2540.00'	86.77'	43.39'	01°57'27"
C94	2540.00'	75.47'	37.74'	01°42'09"
C95	2540.00'	75.25'	37.63'	01°41'51"
C96	2540.00'	75.10'	37.56'	01°41'39"
C97	2540.00'	85.61'	42.81'	01°55'52"
C98	2540.00'	75.01'	37.51'	01°41'31"
C99	2540.00'	101.11'	50.56'	02°16'50"
C100	118.00'	49.79'	25.27'	24°10'27"
C101	118.00'	111.83'	60.51'	54°17'52"
C102	118.00'	14.80'	7.41'	07°11'19"
C103	320.00'	98.37'	49.70'	20°07'47"
C104	280.00'	24.38'	12.20'	04°21'57"
C105	320.00'	88.04'	44.30'	15°45'50"
C106	280.00'	63.32'	31.79'	12°57'23"
C107	280.00'	27.84'	13.93'	05°41'46"
C108	320.00'	43.36'	21.71'	07°45'46"
C109	320.00'	60.82'	30.50'	10°53'22"
C110	20.00'	31.42'	20.00'	90°00'00"
C111	20.00'	16.97'	9.03'	48°36'43"
C112	40.50'	97.98'	107.21'	138°36'43"
C113	40.50'	64.20'	41.09'	90°49'45"
C114	40.50'	23.65'	12.17'	33°27'34"
C115	20.00'	16.97'	9.03'	48°36'43"
C116	20.00'	31.42'	20.00'	90°00'00"
C117	40.50'	10.12'	5.09'	14°19'23"

LINE TABLE		
LINE	DIRECTION	DISTANCE
L1	N68°00'00"W	5.00'
L2	N68°00'00"W	5.00'
L3	N83°52'43"E	12.00'
L4	N01°32'35"E	12.00'
L5	N01°32'28"W	10.00'
L6	N01°52'13"E	21.64'

RADIAL LINE TABLE	
LINE	DIRECTION
L1	N68°00'00"W
L2	N68°00'00"W
L3	N83°52'43"E
L4	N01°32'35"E
L5	N01°32'28"W
L6	N01°52'13"E
R1	N74°49'50"W
R2	N85°09'32"E
R3	N17°45'54"W
R4	N50°22'33"E
R5	N82°25'01"W
R6	N49°16'27"W
R7	N04°07'47"E
R8	N07°15'13"W
R9	N02°49'55"E
R10	N72°12'22"W
R11	N82°10'59"W
R12	N88°05'50"E
R13	N01°43'28"W
R14	N33°51'29"W
R15	N65°24'39"W
R16	N86°48'07"W
R17	N31°53'50"E
R18	N01°23'07"W
R19	N58°47'18"W
R20	N79°07'02"E
R21	N03°59'15"E
R22	N00°32'26"W
R23	N01°38'13"W
R24	N06°14'10"E
R25	N39°31'05"W
R26	N72°58'39"W
R27	N87°18'02"W
R28	N01°52'13"E
R29	N42°59'59"E



**REVISIONS**

No.	Date	Description
1	9-18-98	AMSD ENTRY GATE

**DESIGNED BY:** Carter Burgess  
**DRAWN BY:** [Name]  
**CHECKED BY:** [Name]  
**JOB NO.:** 980084010  
**HORIZ.:** 1"=60'  
**VERT.:** 1"=40'

**PROJECT:** THE ARBORS PARCELS 0 & P  
**DESCRIPTION:** BREAMOR HEIGHTS - PHASE II HORIZONTAL CONTROL PLAN

**SHEET:** 2 OF 14

L:\96V034\DESIGN\PH2\034m21.dwg Mon Dec 22 10:25:45 1997 MERA

