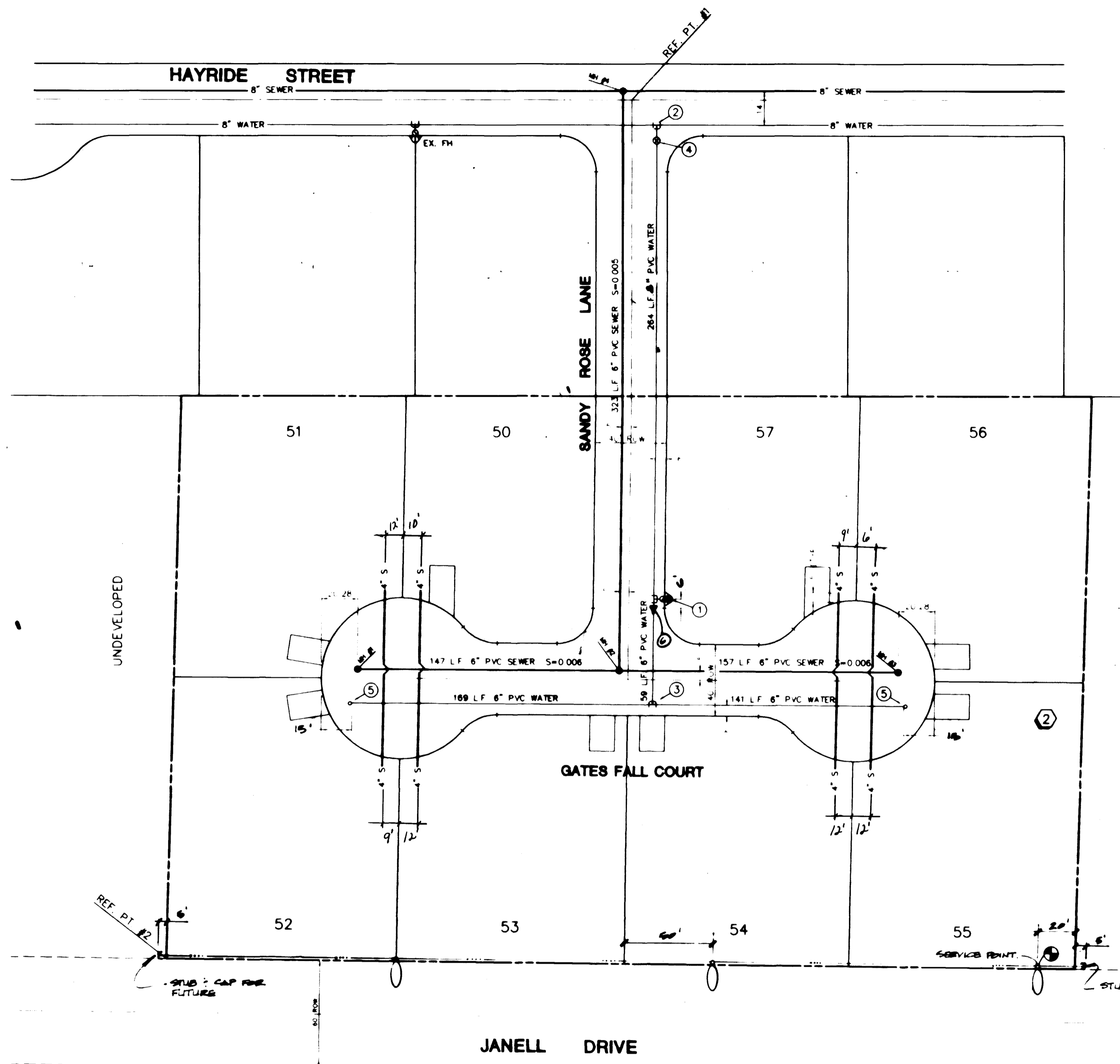
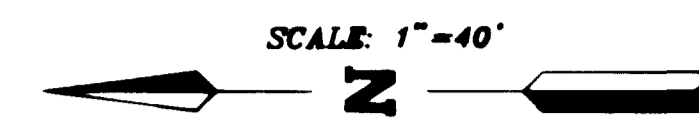


VICINITY MAP

SEE SHTS. C-10 & C-11 FOR CONTINUATION OF SEWER PLANS  
SEE SHTS. C-14 & C-15 FOR CONTINUATION OF WATER PLANS



**BENCHMARK**

B.M. #C0004A2 - RAILROAD SPIKE IN POWER POLE AT SOUTHEAST QUADRANT OF LONE MOUNTAIN ROAD AND CIMARRON ROAD.  
ELEV. = 23717.77 C.C.E.D. DATUM

**NOTES**

- EXISTING UTILITY LOCATIONS SHOWN HEREIN ARE APPROXIMATE ONLY. IT SHALL BE THE CONTRACTOR'S RESPONSIBILITY TO DETERMINE THE EXACT VERTICAL AND HORIZONTAL LOCATION OF ALL EXISTING UNDERGROUND UTILITIES PRIOR TO COMMENCING CONSTRUCTION. NO REPRESENTATION IS MADE THAT ALL EXISTING UTILITIES ARE SHOWN HEREON. THE ENGINEER ASSUMES NO RESPONSIBILITY FOR UTILITIES NOT SHOWN OR UTILITIES NOT SHOWN IN THEIR PROPER LOCATION.
- A 1" x 3/4" ANGLE METER STOP AND 3/4" METER BOX WILL BE REQUIRED WITH THE 1" SERVICE LATERALS FOR ALL SERVICES WITH 5/8" OR 3/4" SERVICES. DETAILS OF THE ABOVE INSTALLATION ARE AVAILABLE FROM THE ENGINEERING SERVICES DIVISION AND FROM THE DISTRICT'S INSPECTORS.

**LAS VEGAS VALLEY WATER DISTRICT STANDARD NOTES**

- NO WORK SHALL BEGIN UNTIL THE WATER PLANS HAVE BEEN RELEASED FOR CONSTRUCTION BY THE LVVWD. FOLLOWING WATER PLAN APPROVAL, 48 HOUR NOTICE SHALL BE GIVEN TO THE LVVWD COMMUNICATION SUPPORT CENTER (258-7171) PRIOR TO THE START OF CONSTRUCTION. NOTICE MUST BE GIVEN BY 2:00 P.M. THE BUSINESS DAY PRIOR TO A LVVWD INSPECTION.
- ALL WORK SHALL CONFORM TO LVVWD STANDARD PLATES, DRAWINGS, AND SPECIFICATIONS, AND THE UNIFORM DESIGN AND CONSTRUCTION STANDARDS FOR WATER DISTRIBUTION SYSTEMS (UDACS), LATEST EDITION.
- ALL WORK, EXCEPT AS MODIFIED BY THESE PLANS OR BY NOTE 2, SHALL BE DONE IN ACCORDANCE WITH THE MOST CURRENT DRAFT OR EDITION OF THE UNIFORM STANDARD SPECIFICATIONS FOR PUBLIC WORKS CONSTRUCTION OFFSITE IMPROVEMENT, CLARK COUNTY AREA APPROVED BY THE LVVWD.
- A SINGLE PIPE MATERIAL SHALL BE USED THROUGHOUT THE PROJECT UNLESS OTHERWISE APPROVED BY THE LVVWD.
- ALL SERVICE LATERALS TWO (2) INCHES IN DIAMETER AND SMALLER SHALL BE COPPER TUBING WITH LVVWD APPROVED SERVICE SADDLES.
- ALL WATER METER BOXES SHALL BE LOCATED OUTSIDE OF DRIVEWAY AREAS.
- ALL VALVES SHALL BE LOCATED OUTSIDE OF DRIVEWAYS, VALLEY AND CURB GUTTERS.
- THE FOLLOWING REQUIREMENTS MUST BE MET IN THE EVENT A WATER LINE AND SANITARY OR STORM SEWER LINE CROSS:
  - A MINIMUM EIGHTEEN (18) INCH VERTICAL SEPARATION (OUTSIDE TO OUTSIDE) MUST BE MAINTAINED WHEN THE WATER LINE IS INSTALLED OVER THE SANITARY OR STORM SEWER LINE. IF THE VERTICAL SEPARATION CANNOT BE MAINTAINED OR THE WATER LINE MUST BE PLACED UNDER THE SANITARY OR STORM SEWER LINE, THE SANITARY OR STORM SEWER LINE MUST BE CONSTRUCTED WITH ONE OF THE FOLLOWING, OR AS SHOWN ON THESE PLANS:
    - POTABLE WATER SUPPLY QUALITY MATERIAL
    - ENCASEMENT, WITH FOUR (4) INCH CONCRETE (MINIMUM)
    - SLEEVING WITH POTABLE WATER SUPPLY QUALITY PIPE

**MANHOLE CONTROL TABLE**

M.H. #	NORTHING	EASTING
1	5869.23	6763.68
2	5822.46	6762.65
3	5865.99	6761.55
4	5820.15	7086.08
REFERENCE POINTS		
1	5815.16	7081.07
2	6076.54	6602.29

**CLARK COUNTY FIRE DEPT. NOTES**

- ALL WORK SHALL BE DONE IN STRICT ACCORDANCE WITH APPENDIX III AS ADOPTED AND THIS GUIDE.
- ON ANY BUILDING CONSTRUCTION, ACCESSIBLE FIRE HYDRANTS SHALL BE INSTALLED BEFORE COMBUSTIBLE MATERIALS ARE DELIVERED TO THE SITE AND CONSTRUCTION COMMENCES. SAID FIRE HYDRANTS SHALL BE IN GOOD WORKING ORDER WITH THE REQUIRED WATER SUPPLY AND NEED TO BE ACCEPTED BY THE PUBLIC WORKS DEPT. AND THE FIRE PREVENTION DIVISION.
- IF DURING CONSTRUCTION IT BECOMES NECESSARY TO CLOSE ANY CONTROL VALVE OR PLACE A HYDRANT OUT OF SERVICE, THE FIRE PREVENTION DIVISION MUST BE CONTACTED.
- PAINTING OF CURBS AND/OR STRIPING OF ASPHALT AREAS AND PROTECTION OF HYDRANTS FROM PHYSICAL INJURY PER FIRE INSTALLATION SPECIFICATIONS OF THE FIRE PREVENTION DIVISION.
- NO FIRE HYDRANT SHALL BE LOCATED WITHIN 25 FEET OF ANY STRUCTURE, OR 5 FEET OF A DRIVEWAY, POWER POLE, LIGHT STANDARD, OR ANY OTHER OBSTRUCTION. FOR WALL, FENCE, AND PLANTER LOCATIONS, A PERIMETER AROUND THE HYDRANT MEASURING A MINIMUM OF 3 FEET FROM ITS EXTERIOR SHALL BE MAINTAINED CLEAR OF ALL OBSTRUCTIONS AT ALL TIMES.
- AT ALL TIMES DURING CONSTRUCTION SUITABLE EMERGENCY VEHICLE ACCESS ROADS MUST BE MAINTAINED. ROADWAYS MUST BE SMOOTH, COMPACTED, AND CAPABLE OF SUPPORTING THE IMPOSED LOADS OF ALL EMERGENCY VEHICLES.
- PRIOR TO ACCEPTANCE OF ANY FIRE SERVICE MAIN, A SATISFACTORY HYDROSTATIC TEST WITH PIPING JOINTS UNCOVERED MUST BE CONDUCTED. APPROVED PLANS AND A CONTRACTOR'S MATERIALS AND TEST CERTIFICATE MUST BE PROVIDED AT TIME OF INSPECTION.
- BLUE REFLECTIVE MARKERS MUST BE INSTALLED BEFORE FINAL HYDRANT ACCEPTANCE CAN BE ATTAINED [91 UFC SEC. 10.105 (2)].

**QUANTITY ESTIMATE**

1 FIRE HYDRANT W/ASSEMBLY	1 EA
2 8" x 8" x 8" TEE	1 EA
3 6" x 6" x 6" TEE	1 EA
4 6" GATE VALVE	1 EA
5 6" CAP W/2" BLOWOFF	1 EA
6 5" x 6" REDUCER	1 EA
7 3/4" METER FROM LVVWD	1 EA
8 1" SERVICE	8 EA
9 6" WATER MAIN	369 LF
10 4" DIAMETER MANHOLE	3 EA
11 8" SEWER MAIN	264 LF
12 4" SEWER LATERALS	372 LF
13 WYE STUBS	8 EA
NOTE: THESE QUANTITIES ARE ONLY ESTIMATES. CONTRACTOR TO VERIFY	
14 100 W. HPS STREET LIGHT	3 EA
15 1 1/4" PVC CONDUIT	520 LF
16 R.C.C. SERVICE POINT	1 EA

PROJECT NAME: CIMARRON ESTATES P. C-23 of 23  
This project water plan was prepared with the Las Vegas Valley Water District's technical standards. However, this water plan is NOT APPROVED FOR CONSTRUCTION at this time and this approval does not provide or imply a water commitment.

*Thomas Barber* 12/26/96  
LTVB

Call before you Dig  
1-800-227-2800  
UNDERGROUND SERVICE (USA)

**APPROVAL**

*[Signature]* 3/26/96  
LAS VEGAS VALLEY WATER DISTRICT DATE

*[Signature]* 12-28-95  
CLARK COUNTY FIRE DEPARTMENT DATE  
APPROVAL OF THESE PLANS SHALL NOT BE CONSTRUED TO BE A PERMIT FOR, OR AN APPROVAL OF, ANY VIOLATION OF ANY OF THE PROVISIONS OF THE STATE OR COUNTY LAWS. FIRE FLOW 1500 GPM AT 20 PSI RESIDUAL.

RECORD DRAWINGS  
MASTER UTILITY PLAN

CIMARRON ESTATES



ESI  
DATE: 7/31/95  
SCALE: 1"=40'  
SHEET: C-23 OF 23  
PROJECT: 19-60-33

19-60-33

Sewer "As Built" 330093 3074-4405

SELF  
BY: TOUTLING  
DATE: 08/09/1995 08:09

SEE SHEET D-10 & D-11 FOR CONTINUATION OF SEWER PLANS  
SEE SHEET D-12 & D-13 FOR CONTINUATION OF WATER PLANS



VICINITY MAP

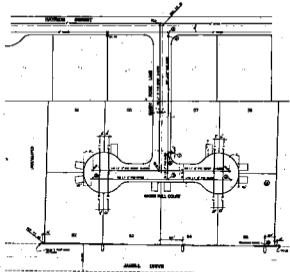
**NOTES**

1. ALL WORK SHALL BE ACCORDING TO THE STANDARD SPECIFICATIONS FOR PUBLIC WORKS OF THE STATE OF CALIFORNIA, LATEST EDITION, AND THE STANDARD SPECIFICATIONS FOR WATER SUPPLY SYSTEMS OF THE STATE OF CALIFORNIA, LATEST EDITION, AND THE STANDARD SPECIFICATIONS FOR SEWERAGE AND SANITATION SYSTEMS OF THE STATE OF CALIFORNIA, LATEST EDITION.
2. ALL WORK SHALL BE ACCORDING TO THE STANDARD SPECIFICATIONS FOR PUBLIC WORKS OF THE STATE OF CALIFORNIA, LATEST EDITION, AND THE STANDARD SPECIFICATIONS FOR WATER SUPPLY SYSTEMS OF THE STATE OF CALIFORNIA, LATEST EDITION, AND THE STANDARD SPECIFICATIONS FOR SEWERAGE AND SANITATION SYSTEMS OF THE STATE OF CALIFORNIA, LATEST EDITION.

**LAS VEGAS VALLEY WATER DISTRICT STANDARD NOTES**

1. ALL WORK SHALL BE ACCORDING TO THE STANDARD SPECIFICATIONS FOR PUBLIC WORKS OF THE STATE OF CALIFORNIA, LATEST EDITION, AND THE STANDARD SPECIFICATIONS FOR WATER SUPPLY SYSTEMS OF THE STATE OF CALIFORNIA, LATEST EDITION, AND THE STANDARD SPECIFICATIONS FOR SEWERAGE AND SANITATION SYSTEMS OF THE STATE OF CALIFORNIA, LATEST EDITION.
2. ALL WORK SHALL BE ACCORDING TO THE STANDARD SPECIFICATIONS FOR PUBLIC WORKS OF THE STATE OF CALIFORNIA, LATEST EDITION, AND THE STANDARD SPECIFICATIONS FOR WATER SUPPLY SYSTEMS OF THE STATE OF CALIFORNIA, LATEST EDITION, AND THE STANDARD SPECIFICATIONS FOR SEWERAGE AND SANITATION SYSTEMS OF THE STATE OF CALIFORNIA, LATEST EDITION.

3. ALL WORK SHALL BE ACCORDING TO THE STANDARD SPECIFICATIONS FOR PUBLIC WORKS OF THE STATE OF CALIFORNIA, LATEST EDITION, AND THE STANDARD SPECIFICATIONS FOR WATER SUPPLY SYSTEMS OF THE STATE OF CALIFORNIA, LATEST EDITION, AND THE STANDARD SPECIFICATIONS FOR SEWERAGE AND SANITATION SYSTEMS OF THE STATE OF CALIFORNIA, LATEST EDITION.
4. ALL WORK SHALL BE ACCORDING TO THE STANDARD SPECIFICATIONS FOR PUBLIC WORKS OF THE STATE OF CALIFORNIA, LATEST EDITION, AND THE STANDARD SPECIFICATIONS FOR WATER SUPPLY SYSTEMS OF THE STATE OF CALIFORNIA, LATEST EDITION, AND THE STANDARD SPECIFICATIONS FOR SEWERAGE AND SANITATION SYSTEMS OF THE STATE OF CALIFORNIA, LATEST EDITION.



**GEN-NAME**  
BY: [Signature]  
DATE: [Date]

**MANHOLE CONTROL TABLE**

MANHOLE NO.	INVERT ELEVATION	OUTLET ELEVATION	DIAMETER	LENGTH
1	10.00	9.50	36"	10.0'
2	9.50	9.00	36"	10.0'
3	9.00	8.50	36"	10.0'
4	8.50	8.00	36"	10.0'
5	8.00	7.50	36"	10.0'
6	7.50	7.00	36"	10.0'
7	7.00	6.50	36"	10.0'
8	6.50	6.00	36"	10.0'
9	6.00	5.50	36"	10.0'
10	5.50	5.00	36"	10.0'
11	5.00	4.50	36"	10.0'
12	4.50	4.00	36"	10.0'
13	4.00	3.50	36"	10.0'
14	3.50	3.00	36"	10.0'
15	3.00	2.50	36"	10.0'
16	2.50	2.00	36"	10.0'
17	2.00	1.50	36"	10.0'
18	1.50	1.00	36"	10.0'
19	1.00	0.50	36"	10.0'
20	0.50	0.00	36"	10.0'

**CLARK COUNTY FIRE DEPT. NOTES**

1. ALL WORK SHALL BE ACCORDING TO THE STANDARD SPECIFICATIONS FOR PUBLIC WORKS OF THE STATE OF CALIFORNIA, LATEST EDITION, AND THE STANDARD SPECIFICATIONS FOR WATER SUPPLY SYSTEMS OF THE STATE OF CALIFORNIA, LATEST EDITION, AND THE STANDARD SPECIFICATIONS FOR SEWERAGE AND SANITATION SYSTEMS OF THE STATE OF CALIFORNIA, LATEST EDITION.
2. ALL WORK SHALL BE ACCORDING TO THE STANDARD SPECIFICATIONS FOR PUBLIC WORKS OF THE STATE OF CALIFORNIA, LATEST EDITION, AND THE STANDARD SPECIFICATIONS FOR WATER SUPPLY SYSTEMS OF THE STATE OF CALIFORNIA, LATEST EDITION, AND THE STANDARD SPECIFICATIONS FOR SEWERAGE AND SANITATION SYSTEMS OF THE STATE OF CALIFORNIA, LATEST EDITION.

**QUANTITY ESTIMATE**

1" DIA. PIPE	1.00
2" DIA. PIPE	1.00
3" DIA. PIPE	1.00
4" DIA. PIPE	1.00
6" DIA. PIPE	1.00
8" DIA. PIPE	1.00
12" DIA. PIPE	1.00
18" DIA. PIPE	1.00
24" DIA. PIPE	1.00
30" DIA. PIPE	1.00
36" DIA. PIPE	1.00
42" DIA. PIPE	1.00
48" DIA. PIPE	1.00
54" DIA. PIPE	1.00
60" DIA. PIPE	1.00
66" DIA. PIPE	1.00
72" DIA. PIPE	1.00
78" DIA. PIPE	1.00
84" DIA. PIPE	1.00
90" DIA. PIPE	1.00
96" DIA. PIPE	1.00
102" DIA. PIPE	1.00
108" DIA. PIPE	1.00
114" DIA. PIPE	1.00
120" DIA. PIPE	1.00
126" DIA. PIPE	1.00
132" DIA. PIPE	1.00
138" DIA. PIPE	1.00
144" DIA. PIPE	1.00
150" DIA. PIPE	1.00
156" DIA. PIPE	1.00
162" DIA. PIPE	1.00
168" DIA. PIPE	1.00
174" DIA. PIPE	1.00
180" DIA. PIPE	1.00
186" DIA. PIPE	1.00
192" DIA. PIPE	1.00
198" DIA. PIPE	1.00
204" DIA. PIPE	1.00
210" DIA. PIPE	1.00
216" DIA. PIPE	1.00
222" DIA. PIPE	1.00
228" DIA. PIPE	1.00
234" DIA. PIPE	1.00
240" DIA. PIPE	1.00
246" DIA. PIPE	1.00
252" DIA. PIPE	1.00
258" DIA. PIPE	1.00
264" DIA. PIPE	1.00
270" DIA. PIPE	1.00
276" DIA. PIPE	1.00
282" DIA. PIPE	1.00
288" DIA. PIPE	1.00
294" DIA. PIPE	1.00
300" DIA. PIPE	1.00
306" DIA. PIPE	1.00
312" DIA. PIPE	1.00
318" DIA. PIPE	1.00
324" DIA. PIPE	1.00
330" DIA. PIPE	1.00
336" DIA. PIPE	1.00
342" DIA. PIPE	1.00
348" DIA. PIPE	1.00
354" DIA. PIPE	1.00
360" DIA. PIPE	1.00
366" DIA. PIPE	1.00
372" DIA. PIPE	1.00
378" DIA. PIPE	1.00
384" DIA. PIPE	1.00
390" DIA. PIPE	1.00
396" DIA. PIPE	1.00
402" DIA. PIPE	1.00
408" DIA. PIPE	1.00
414" DIA. PIPE	1.00
420" DIA. PIPE	1.00
426" DIA. PIPE	1.00
432" DIA. PIPE	1.00
438" DIA. PIPE	1.00
444" DIA. PIPE	1.00
450" DIA. PIPE	1.00
456" DIA. PIPE	1.00
462" DIA. PIPE	1.00
468" DIA. PIPE	1.00
474" DIA. PIPE	1.00
480" DIA. PIPE	1.00
486" DIA. PIPE	1.00
492" DIA. PIPE	1.00
498" DIA. PIPE	1.00
504" DIA. PIPE	1.00
510" DIA. PIPE	1.00
516" DIA. PIPE	1.00
522" DIA. PIPE	1.00
528" DIA. PIPE	1.00
534" DIA. PIPE	1.00
540" DIA. PIPE	1.00
546" DIA. PIPE	1.00
552" DIA. PIPE	1.00
558" DIA. PIPE	1.00
564" DIA. PIPE	1.00
570" DIA. PIPE	1.00
576" DIA. PIPE	1.00
582" DIA. PIPE	1.00
588" DIA. PIPE	1.00
594" DIA. PIPE	1.00
600" DIA. PIPE	1.00
606" DIA. PIPE	1.00
612" DIA. PIPE	1.00
618" DIA. PIPE	1.00
624" DIA. PIPE	1.00
630" DIA. PIPE	1.00
636" DIA. PIPE	1.00
642" DIA. PIPE	1.00
648" DIA. PIPE	1.00
654" DIA. PIPE	1.00
660" DIA. PIPE	1.00
666" DIA. PIPE	1.00
672" DIA. PIPE	1.00
678" DIA. PIPE	1.00
684" DIA. PIPE	1.00
690" DIA. PIPE	1.00
696" DIA. PIPE	1.00
702" DIA. PIPE	1.00
708" DIA. PIPE	1.00
714" DIA. PIPE	1.00
720" DIA. PIPE	1.00
726" DIA. PIPE	1.00
732" DIA. PIPE	1.00
738" DIA. PIPE	1.00
744" DIA. PIPE	1.00
750" DIA. PIPE	1.00
756" DIA. PIPE	1.00
762" DIA. PIPE	1.00
768" DIA. PIPE	1.00
774" DIA. PIPE	1.00
780" DIA. PIPE	1.00
786" DIA. PIPE	1.00
792" DIA. PIPE	1.00
798" DIA. PIPE	1.00
804" DIA. PIPE	1.00
810" DIA. PIPE	1.00
816" DIA. PIPE	1.00
822" DIA. PIPE	1.00
828" DIA. PIPE	1.00
834" DIA. PIPE	1.00
840" DIA. PIPE	1.00
846" DIA. PIPE	1.00
852" DIA. PIPE	1.00
858" DIA. PIPE	1.00
864" DIA. PIPE	1.00
870" DIA. PIPE	1.00
876" DIA. PIPE	1.00
882" DIA. PIPE	1.00
888" DIA. PIPE	1.00
894" DIA. PIPE	1.00
900" DIA. PIPE	1.00
906" DIA. PIPE	1.00
912" DIA. PIPE	1.00
918" DIA. PIPE	1.00
924" DIA. PIPE	1.00
930" DIA. PIPE	1.00
936" DIA. PIPE	1.00
942" DIA. PIPE	1.00
948" DIA. PIPE	1.00
954" DIA. PIPE	1.00
960" DIA. PIPE	1.00
966" DIA. PIPE	1.00
972" DIA. PIPE	1.00
978" DIA. PIPE	1.00
984" DIA. PIPE	1.00
990" DIA. PIPE	1.00
996" DIA. PIPE	1.00
1002" DIA. PIPE	1.00
1008" DIA. PIPE	1.00
1014" DIA. PIPE	1.00
1020" DIA. PIPE	1.00
1026" DIA. PIPE	1.00
1032" DIA. PIPE	1.00
1038" DIA. PIPE	1.00
1044" DIA. PIPE	1.00
1050" DIA. PIPE	1.00
1056" DIA. PIPE	1.00
1062" DIA. PIPE	1.00
1068" DIA. PIPE	1.00
1074" DIA. PIPE	1.00
1080" DIA. PIPE	1.00
1086" DIA. PIPE	1.00
1092" DIA. PIPE	1.00
1098" DIA. PIPE	1.00
1104" DIA. PIPE	1.00
1110" DIA. PIPE	1.00
1116" DIA. PIPE	1.00
1122" DIA. PIPE	1.00
1128" DIA. PIPE	1.00
1134" DIA. PIPE	1.00
1140" DIA. PIPE	1.00
1146" DIA. PIPE	1.00
1152" DIA. PIPE	1.00
1158" DIA. PIPE	1.00
1164" DIA. PIPE	1.00
1170" DIA. PIPE	1.00
1176" DIA. PIPE	1.00
1182" DIA. PIPE	1.00
1188" DIA. PIPE	1.00
1194" DIA. PIPE	1.00
1200" DIA. PIPE	1.00
1206" DIA. PIPE	1.00
1212" DIA. PIPE	1.00
1218" DIA. PIPE	1.00
1224" DIA. PIPE	1.00
1230" DIA. PIPE	1.00
1236" DIA. PIPE	1.00
1242" DIA. PIPE	1.00
1248" DIA. PIPE	1.00
1254" DIA. PIPE	1.00
1260" DIA. PIPE	1.00
1266" DIA. PIPE	1.00
1272" DIA. PIPE	1.00
1278" DIA. PIPE	1.00
1284" DIA. PIPE	1.00
1290" DIA. PIPE	1.00
1296" DIA. PIPE	1.00
1302" DIA. PIPE	1.00
1308" DIA. PIPE	1.00
1314" DIA. PIPE	1.00
1320" DIA. PIPE	1.00
1326" DIA. PIPE	1.00
1332" DIA. PIPE	1.00
1338" DIA. PIPE	1.00
1344" DIA. PIPE	1.00
1350" DIA. PIPE	1.00
1356" DIA. PIPE	1.00
1362" DIA. PIPE	1.00
1368" DIA. PIPE	1.00
1374" DIA. PIPE	1.00
1380" DIA. PIPE	1.00
1386" DIA. PIPE	1.00
1392" DIA. PIPE	1.00
1398" DIA. PIPE	1.00
1404" DIA. PIPE	1.00
1410" DIA. PIPE	1.00
1416" DIA. PIPE	1.00
1422" DIA. PIPE	1.00
1428" DIA. PIPE	1.00
1434" DIA. PIPE	1.00
1440" DIA. PIPE	1.00
1446" DIA. PIPE	1.00
1452" DIA. PIPE	1.00
1458" DIA. PIPE	1.00
1464" DIA. PIPE	1.00
1470" DIA. PIPE	1.00
1476" DIA. PIPE	1.00
1482" DIA. PIPE	1.00
1488" DIA. PIPE	1.00
1494" DIA. PIPE	1.00
1500" DIA. PIPE	1.00

**DESIGNER**  
[Signature]

**APPROVAL**  
[Signature]

**APPROVAL**  
[Signature]  
[Signature]

NO.	DATE	DESCRIPTION
1	10/15/10	ISSUED FOR PERMITS
2	10/20/10	REVISIONS
3	11/05/10	REVISIONS
4	11/15/10	REVISIONS
5	12/01/10	REVISIONS
6	12/15/10	REVISIONS
7	01/05/11	REVISIONS
8	01/15/11	REVISIONS
9	02/01/11	REVISIONS
10	02/15/11	REVISIONS
11	03/01/11	REVISIONS
12	03/15/11	REVISIONS
13	04/01/11	REVISIONS
14	04/15/11	REVISIONS
15	05/01/11	REVISIONS
16	05/15/11	REVISIONS
17	06/01/11	REVISIONS
18	06/15/11	REVISIONS
19	07/01/11	REVISIONS
20	07/15/11	REVISIONS
21	08/01/11	REVISIONS
22	08/15/11	REVISIONS
23	09/01/11	REVISIONS
24	09/15/11	REVISIONS
25	10/01/11	REVISIONS
26	10/15/11	REVISIONS
27	11/01/11	REVISIONS
28	11/15/11	REVISIONS
29	12/01/11	REVISIONS
30	12/15/11	REVISIONS
31	01/01/12	REVISIONS
32	01/15/12	REVISIONS
33	02/01/12	REVISIONS
34	02/15/12	REVISIONS
35	03/01/12	REVISIONS
36	03/15/12	REVISIONS
37	04/01/12	REVISIONS
38	04/15/12	REVISIONS
39	05/01/12	REVISIONS
40	05/15/12	REVISIONS
41	06/01/12	REVISIONS
42	06/15/12	REVISIONS
43	07/01/12	REVISIONS
44	07/15/12	REVISIONS
45	08/01/12	REVISIONS
46	08/15/12	REVISIONS
47	09/01/12	REVISIONS
48		