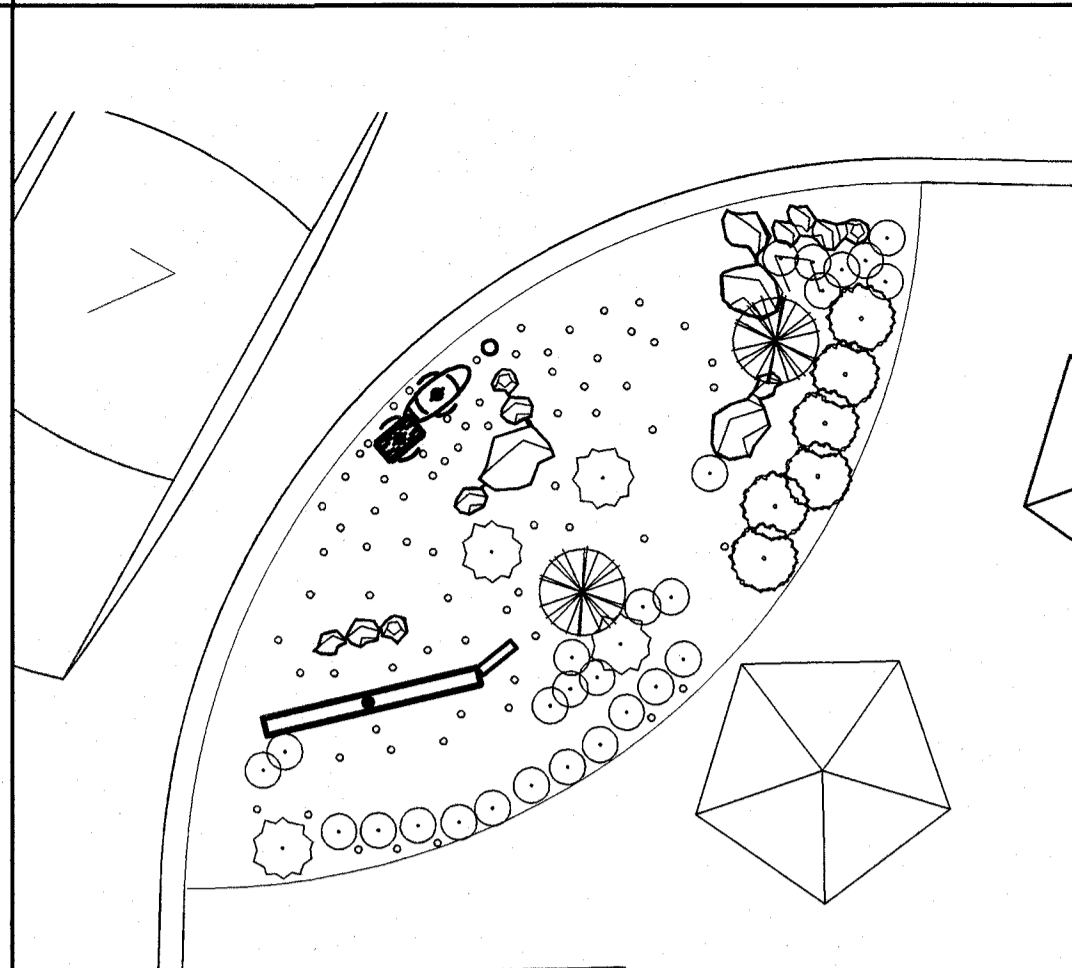


DRIVE UP DETAIL SCALE: 1/4" = 1'-0" 18



LANDSCAPE SCHEDULE:

SYMBOL	COMMON NAME	BOTANICAL NAME	SIZE	QTY/REMARKS
⬠	TEXAS RANGER "SIERRA BOUQUET"	LEUCOPHYLLUM PRUNOSUM	5 GAL.	108
⊙	NATIVE/VELVET MESQUITE	PROSOPIS VELUTINA	24" BOX	28
⊙	RED YUCCA	HESPERALOE PARVIFLORA	3 GAL.	2
⊙	MOCK ORANGE	PITTOSPORUM TOBIRA	3 GAL.	6
⊙	DWARF GOLDEN ARBOVITAE	THUJA OCCIDENTALS "RHEINGOLD"	5 GAL.	27
⊙	HAMELIN GRASS	PENNISETUM ALOPE CUROIDES	3 GAL.	3
⊙	SANDSTONE BOULDERS		6-24" EACH SEE PLAN	15

- NOTES:
1. ALL PLANTERS AREAS NOT OTHERWISE NOTED TO HAVE 3" DEEP, 3/4" GRAVEL O/BLACK POLYETHYLENE GROUND COVER, AROUND & BETWEEN PLANTS & SHRUBS. (GRAVEL COLOR TO BE SELECTED BY ARCHITECT)
 2. ALL TREES SHALL HAVE A GROWTH HEIGHT OF 40' OR HIGHER W/ 20 FOOT SPREAD MIN. ALL TREES TO BE STAKED FOR SUPPORT.
 3. SUPPLY & INSTALL A PROPER AUTOMATIC IRRIGATION SYSTEM TO ALL PLANTING AREAS.
 4. MAINTENANCE REQUIREMENTS OF LANDSCAPING TO BE PROVIDED BY OWNER.

THIS DRAWING IS AN INSTRUMENT OF SERVICE BETWEEN THE ARCHITECT AND HIS CLIENT, BUT REMAINS THE PROPERTY OF THE ARCHITECT.
ALL RIGHTS RESERVED 2016

architecture/engineering/site planning/interior design
GARY GUY WILSON AIA ARCHITECTS, PC
 4945 West Patrick Ave.
 Las Vegas, Nevada 89118
 (702) 934-7888
 professional corp / certified, n.c.c.r.a.

CONSULTANTS:
 CIVIL: CIVILWORKS, INC.
 STRUCTL: SIERRA CONSULTING ENGINEERS
 ELEC/MECH/PLUMB: HPA CONSULTING ENGINEERS

TACO BELL @ LAKE MEAD AND MLK
 NEW COMMERCIAL CONSTRUCTION
 FOR: FIRST STREET DEVELOPMENT
 CITY OF LAS VEGAS, NEVADA

PROJ.NO.	15231514.00
PRIN.ARCH.	G.G.WILSON,AIA
PROJ.ARCH.	GGW
JOB CAPT.	AML
TECH'N	MXA
ARCH.CHK.	GGW
PH-2/3	-
PH-4	-
PH-5	7/13/2016

REVISIONS

PRINTS REQUIRE ARCHITECT'S SEAL & SIGN FOR PROOF OF VALIDITY

LANDSCAPE PLAN

PROFESSIONAL SEAL OF GARY G. WILSON, REGISTERED ARCHITECT, STATE OF NEVADA, No. 1516

AUG 15 2016

SHT. NO. 107N6074
A1.1B
 60258

NOTE: SEE SITE PLAN A1.1A AND CIVIL FOR DIMENSIONS OF AREA

LANDSCAPE PLAN SC: 1/32" = 1'-0" 5