

**RCB CONSTRUCTION NOTES**

DESIGN SPECIFICATIONS: AASHTO "Standard Specifications for Highway Bridges 1983" and "Interim Specifications Bridges 1992".

CONSTRUCTION SPECIFICATIONS: "Uniform Standard Specifications for Public Works Construction Off-Site Improvements, Clark County Area, Nevada", except as noted in the Special Provisions for this Contract.

LIVE LOADS: Standard HS 20-44 Loading.

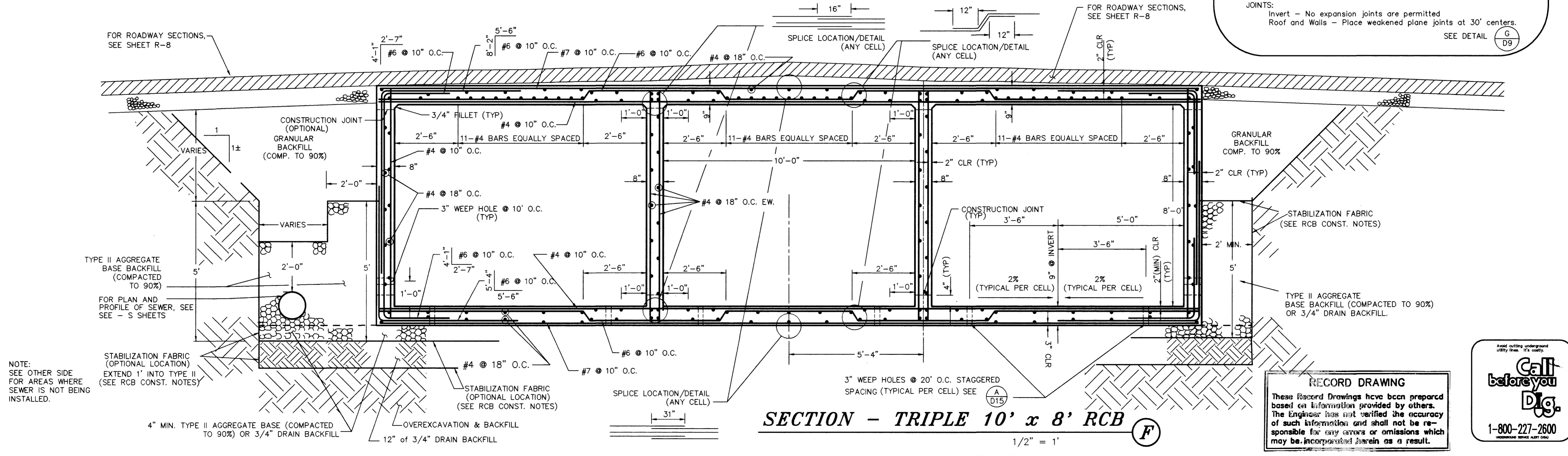
CONCRETE: All concrete to be Class DA-Modified, Type V (6.5 sack minimum, 0.45 water/cement ratio), with a twenty-eight (28) day compressive strength of 4,000 P.S.I.

REINFORCING STEEL: All reinforcing steel to be ASTM A 615 Grade 60. Bottom slab reinforcement shall have three inch (3") clearance. All other reinforcement shall have a two inch (2") clearance unless otherwise noted on the plans.

WEEP HOLES: 6" square aluminum or galvanized steel wire 1/4" mesh hardware cloth (minimum wire diameter - 0.025") shall be firmly anchored to backface at each weephole.

STABILIZATION FABRIC: Stabilization fabric will be installed between stations 94+00 and 120+00 as shown on these drawings and in accordance with Section 206 of the Supplemental Construction Details.

JOINTS:  
 Invert - No expansion joints are permitted.  
 Roof and Walls - Place weakened plane joints at 30' centers.



NOTE: SEE OTHER SIDE FOR AREAS WHERE SEWER IS NOT BEING INSTALLED.

**RECORD DRAWING**

These Record Drawings have been prepared based on information provided by others. The Engineer has not verified the accuracy of such information and shall not be responsible for any errors or omissions which may be incorporated herein as a result.

Call before you Dig.

1-800-227-2600

**REVISIONS**

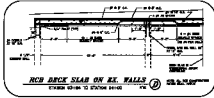
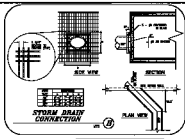
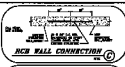
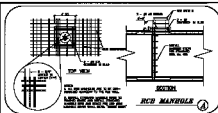
No.	Date	By	Checked

DESIGNED: RB/RB  
 DRAWN: CK/DK  
 CHECKED: RB  
 JOB NO.: 398-8-81  
 SCALE: AS SHOWN  
 VERT. NOTED

1055 EAST TROPICANA SUITE 800 LAS VEGAS, NEVADA 89119 (702)798-1007

**NEA CONSULTING ENGINEERS**

PROJECT: CITY OF LAS VEGAS WASHINGTON AVENUE CONVEYANCE SYSTEM  
 DESCRIPTION: RCB SECTION and DETAILS  
 SHEET: D-9  
 12 OF 39



**RCB CONNECTIONS NOTES**

1. ALL REINFORCEMENT SHALL BE 1/2" DIA. UNLESS OTHERWISE SPECIFIED.

2. ALL REINFORCEMENT SHALL BE 1/2" DIA. UNLESS OTHERWISE SPECIFIED.

3. ALL REINFORCEMENT SHALL BE 1/2" DIA. UNLESS OTHERWISE SPECIFIED.

4. ALL REINFORCEMENT SHALL BE 1/2" DIA. UNLESS OTHERWISE SPECIFIED.

5. ALL REINFORCEMENT SHALL BE 1/2" DIA. UNLESS OTHERWISE SPECIFIED.

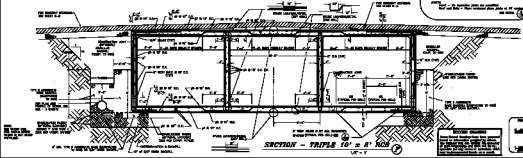
6. ALL REINFORCEMENT SHALL BE 1/2" DIA. UNLESS OTHERWISE SPECIFIED.

7. ALL REINFORCEMENT SHALL BE 1/2" DIA. UNLESS OTHERWISE SPECIFIED.

8. ALL REINFORCEMENT SHALL BE 1/2" DIA. UNLESS OTHERWISE SPECIFIED.

9. ALL REINFORCEMENT SHALL BE 1/2" DIA. UNLESS OTHERWISE SPECIFIED.

10. ALL REINFORCEMENT SHALL BE 1/2" DIA. UNLESS OTHERWISE SPECIFIED.



**NOTES**

1. ALL REINFORCEMENT SHALL BE 1/2" DIA. UNLESS OTHERWISE SPECIFIED.

2. ALL REINFORCEMENT SHALL BE 1/2" DIA. UNLESS OTHERWISE SPECIFIED.

3. ALL REINFORCEMENT SHALL BE 1/2" DIA. UNLESS OTHERWISE SPECIFIED.

4. ALL REINFORCEMENT SHALL BE 1/2" DIA. UNLESS OTHERWISE SPECIFIED.

5. ALL REINFORCEMENT SHALL BE 1/2" DIA. UNLESS OTHERWISE SPECIFIED.

6. ALL REINFORCEMENT SHALL BE 1/2" DIA. UNLESS OTHERWISE SPECIFIED.

7. ALL REINFORCEMENT SHALL BE 1/2" DIA. UNLESS OTHERWISE SPECIFIED.

8. ALL REINFORCEMENT SHALL BE 1/2" DIA. UNLESS OTHERWISE SPECIFIED.

9. ALL REINFORCEMENT SHALL BE 1/2" DIA. UNLESS OTHERWISE SPECIFIED.

10. ALL REINFORCEMENT SHALL BE 1/2" DIA. UNLESS OTHERWISE SPECIFIED.

CITY OF LOS ANGELES  
 SANITATION DIVISION  
 RCB SECTION  
 MANHOLES

1-9