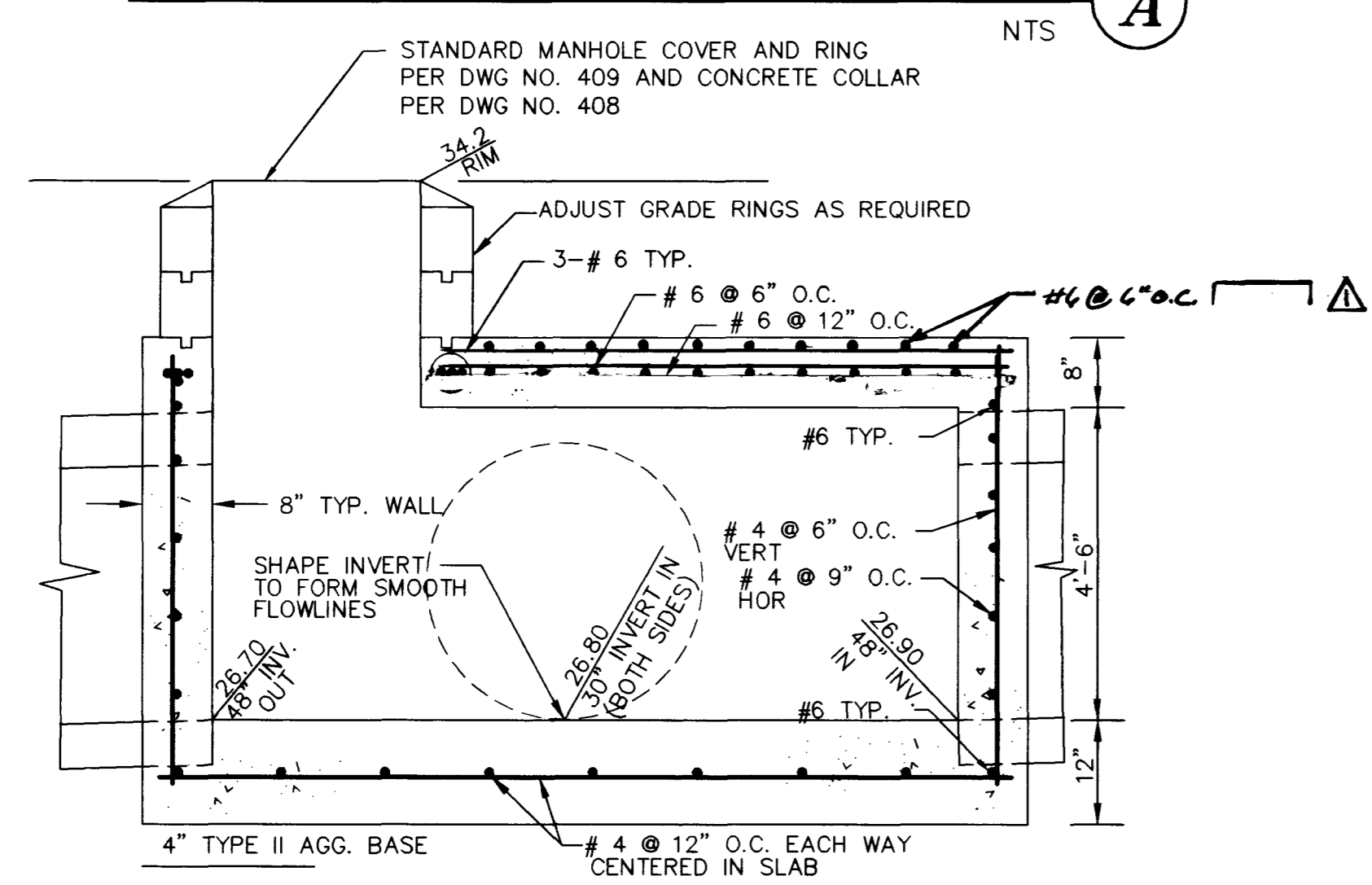
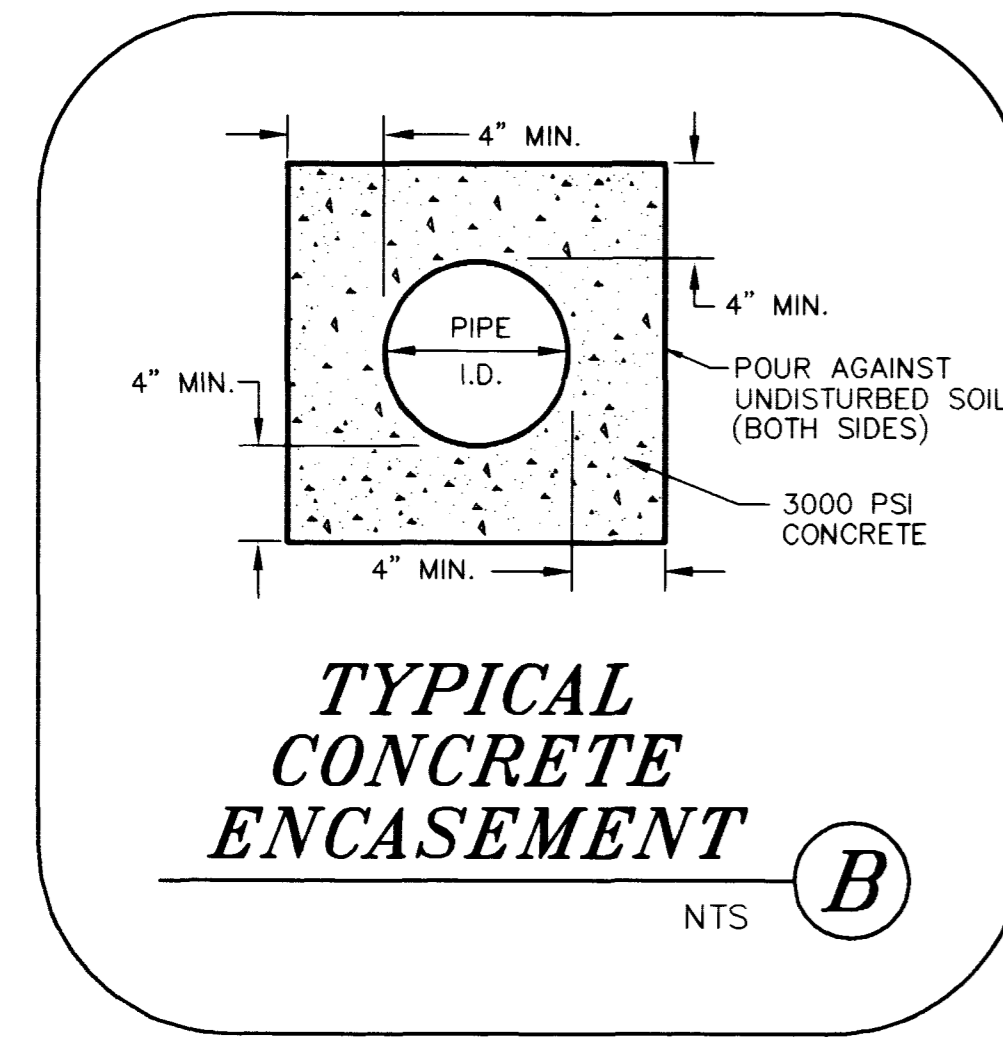


JUNCTION STRUCTURE

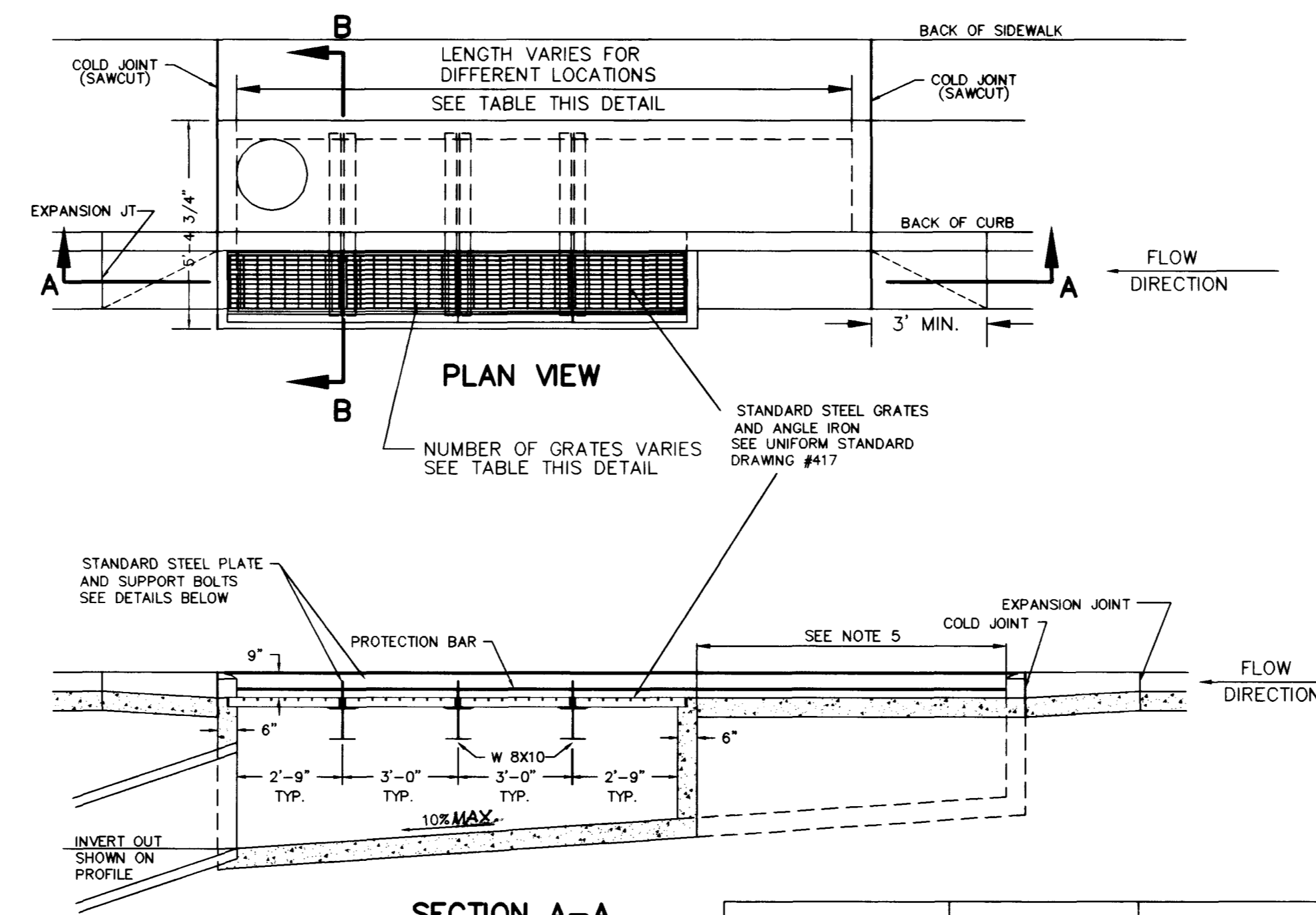


SECTION

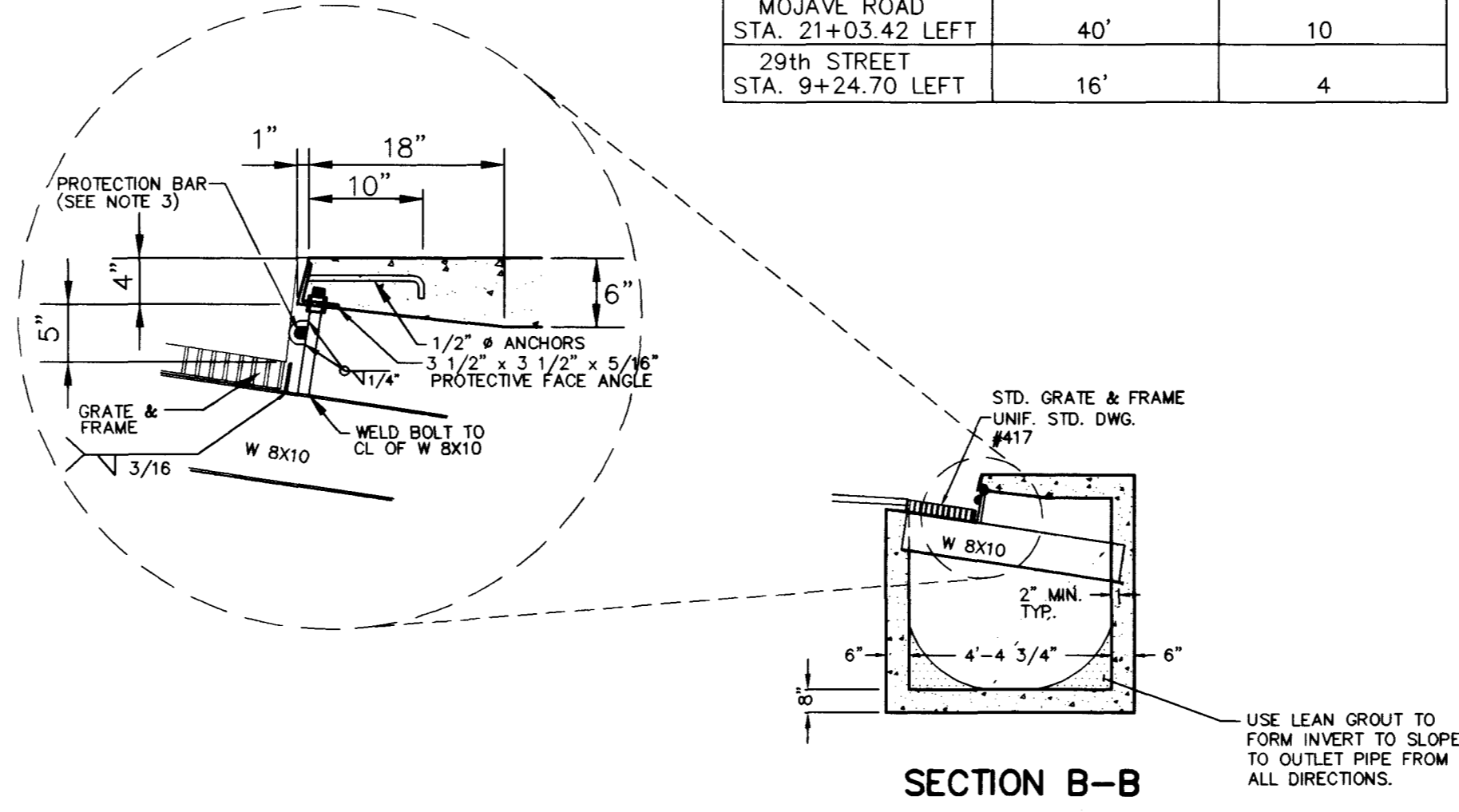


TYPICAL CONCRETE ENCASEMENT

Call before you Dig.
1-800-227-2600
UNDERGROUND SERVICE ALERT (USA)

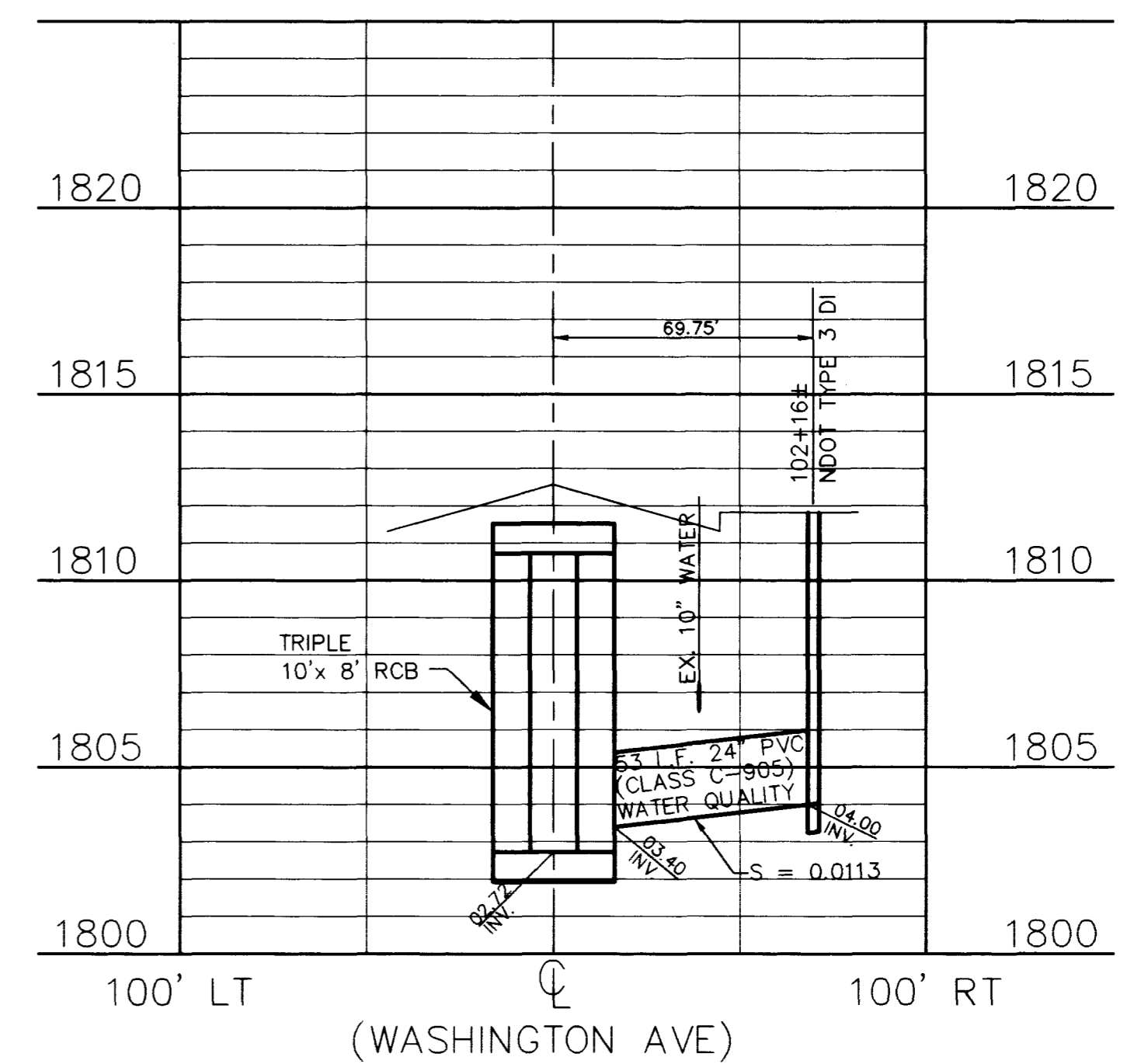
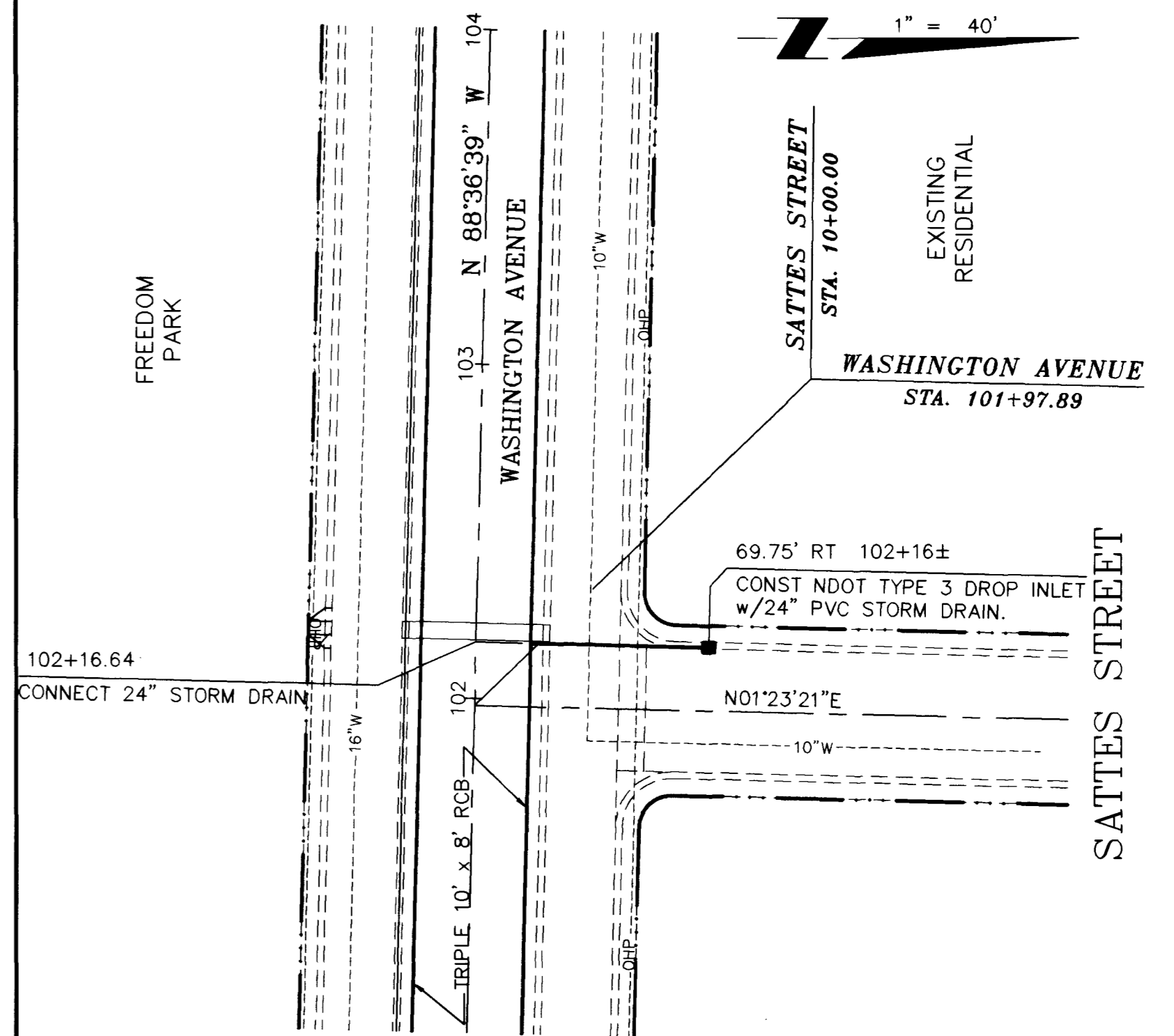


LOCATION	LENGTH	No. OF GRATES
EASTERN AVENUE STA. 13+05.00 RIGHT	20'	6
EASTERN AVENUE STA. 13+61.95 LEFT	20'	6
MOJAVE ROAD STA. 21+03.42 LEFT	40'	10
29th STREET STA. 9+24.70 LEFT	16'	4



MODIFIED TYPE 'C' DROP INLET

- NOTES:
- STEEL REINFORCEMENT, 22" DIAMETER LID, AND GRATE FRAMES SHALL BE AS PER UNIFORM STANDARD DRAWING #413.
 - STEEL FRAMES AND GRATES SHALL BE AS PER UNIFORM STANDARD DRAWING #417.
 - PROTECTION BAR SHALL BE AS PER UNIFORM STANDARD DRAWINGS #418 & #419 FOR SIZE, TYPE, AND INSTALLATION.
 - ANGLE ANCHORS SHALL BE EMBEDDED MIDPOINT IN EACH ENDWALL AND EVENLY SPACED (MAX. SPACING = 5').
 - SUPPORT BOLTS SHALL BE EVENLY SPACED, NOT TO EXCEED 2'-0". SEE DETAIL "E" OF TYPE 11 DROP INLET PER NDOT R-4.6.2 (609).



APPROVED:
LVWD

DATE: 6/14/94

RECORD DRAWING
These Record Drawings have been prepared based on information provided by others. The Engineer has not verified the accuracy of such information and shall not be responsible for any errors or omissions which may be incorporated herein as a result.

REVISIONS

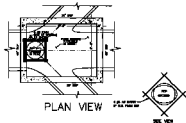
No.	Date	Description
1	4/14/94	CCA AG. 13 - Drafting

DESIGNED: RB/BB
DRAWN: CK/BB
CHECKED: BE
JOB NO. 388-2-91
SCALE: HORIZ. 1" = 40'
VERT. 1" = 4'

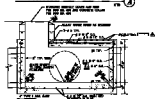
1055 EAST TROPICANA
SUITE 800S, NEVADA 89119
(702) 796-1007

CITY OF LAS VEGAS
WASHINGTON AVENUE CONVEYANCE SYSTEM
STORM DRAIN
PROFILES & DETAILS

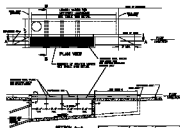
SHEET D-8
11 OF 39



JUNCTION STRUCTURE



SECTION

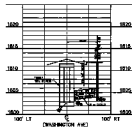
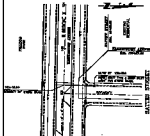


ITEM	QTY	UNIT	AMOUNT
1. 18\"/>			
2. 18\"/>			
3. 18\"/>			
4. 18\"/>			
5. 18\"/>			
6. 18\"/>			
7. 18\"/>			
8. 18\"/>			
9. 18\"/>			
10. 18\"/>			
11. 18\"/>			
12. 18\"/>			
13. 18\"/>			
14. 18\"/>			
15. 18\"/>			
16. 18\"/>			
17. 18\"/>			
18. 18\"/>			
19. 18\"/>			
20. 18\"/>			
21. 18\"/>			
22. 18\"/>			
23. 18\"/>			
24. 18\"/>			
25. 18\"/>			
26. 18\"/>			
27. 18\"/>			
28. 18\"/>			
29. 18\"/>			
30. 18\"/>			
31. 18\"/>			
32. 18\"/>			
33. 18\"/>			
34. 18\"/>			
35. 18\"/>			
36. 18\"/>			
37. 18\"/>			
38. 18\"/>			
39. 18\"/>			
40. 18\"/>			
41. 18\"/>			
42. 18\"/>			
43. 18\"/>			
44. 18\"/>			
45. 18\"/>			
46. 18\"/>			
47. 18\"/>			
48. 18\"/>			
49. 18\"/>			
50. 18\"/>			
51. 18\"/>			
52. 18\"/>			
53. 18\"/>			
54. 18\"/>			
55. 18\"/>			
56. 18\"/>			
57. 18\"/>			
58. 18\"/>			
59. 18\"/>			
60. 18\"/>			
61. 18\"/>			
62. 18\"/>			
63. 18\"/>			
64. 18\"/>			
65. 18\"/>			
66. 18\"/>			
67. 18\"/>			
68. 18\"/>			
69. 18\"/>			
70. 18\"/>			
71. 18\"/>			
72. 18\"/>			
73. 18\"/>			
74. 18\"/>			
75. 18\"/>			
76. 18\"/>			
77. 18\"/>			
78. 18\"/>			
79. 18\"/>			
80. 18\"/>			
81. 18\"/>			
82. 18\"/>			
83. 18\"/>			
84. 18\"/>			
85. 18\"/>			
86. 18\"/>			
87. 18\"/>			
88. 18\"/>			
89. 18\"/>			
90. 18\"/>			
91. 18\"/>			
92. 18\"/>			
93. 18\"/>			
94. 18\"/>			
95. 18\"/>			
96. 18\"/>			
97. 18\"/>			
98. 18\"/>			
99. 18\"/>			
100. 18\"/>			



- NOTES:
1. SEE DRAWING FOR DIMENSIONS AND MATERIALS.
 2. ALL DIMENSIONS ARE TO FACE UNLESS OTHERWISE SPECIFIED.
 3. ALL MATERIALS SHALL BE AS SPECIFIED IN THE SPECIFICATIONS.
 4. WORKMANSHIP SHALL BE AS SPECIFIED IN THE SPECIFICATIONS.

MODIFIED TYPE C DROP INLET



DESIGNED BY: [Signature]

DATE: [Date]

PROJECT: [Project Name]

SCALE: [Scale]

CITY OF LAS VEGAS
 RECREATION & PARKS DEPARTMENT
 STORM DRAIN
 PROFILES & DETAILS