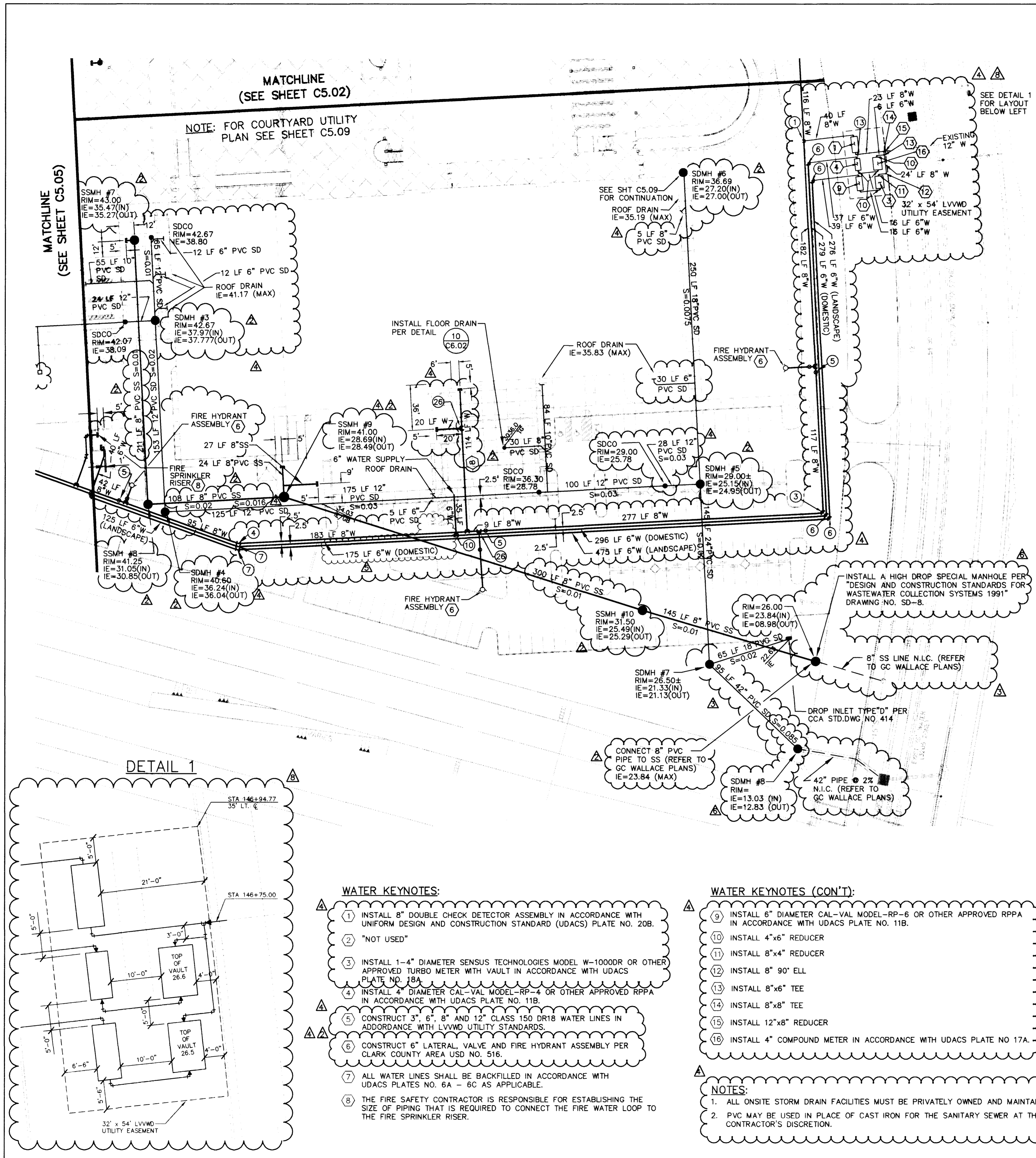


SCALE: 1" = 40'
 FILE: 95163C-UDUG PP-C503 XR2163CSITE



REVISIONS

REV	DESCRIPTION	DATE	BY
▲	SHEET UPDATE	05-10-96	RCP
▲	PER CLV PW FLOOD - CONTROL	05-14-96	DRF
▲	GENERAL SHEET REVISION AND REVISIONS		
▲	PER LVVMD COMMENTS	06-03-96	DRF
▲	PER CCSN BUILDING DESIGN	08-01-96	SPA
▲	PER COORDINATION OF G.C. WALLACE		
▲	FINAL DRAWINGS		SPA
▲	PER CLV COMMENTS	08-30-96	DRF
▲	PER COORDINATION OF G.C. WALLACE		
▲	FINAL DRAWINGS		RCP

KEY PLAN

CLARK COUNTY SCHOOL DISTRICT
 ALTA/HUALAPAI HIGH SCHOOL
 LAS VEGAS

UTILITY PLAN - AREA B

POGGEMEYER DESIGN GROUP
 ENGINEERS PLANNERS SURVEYORS
 2801 NORTH TENAYA WAY, LAS VEGAS, NEVADA 89128 (702) 286-8800

TATE & SNYDER ARCHITECTS
 709 VALLE VERDE COURT
 HENDERSON NEVADA 89014
 (702) 456.3000

CLARK COUNTY SCHOOL DISTRICT
 CONSTRUCTION MANAGEMENT DEPARTMENT 4828 S. PEARL STREET 799-7600 LAS VEGAS, NEVADA 89121

ALTA/HUALAPAI HIGH SCHOOL
 LAS VEGAS

PROJECT
 SHEET NO. **C5.03**
 27 OF 40

Call before you Dig.
 1-800-227-2600

DATE 10/30/96
DATE 8/19/96

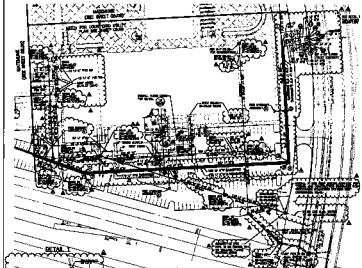
NOTE:
 DOMESTIC WATER AND FIRE PROTECTION SERVICE WILL NOT BE AVAILABLE UNTIL COMPLETION OF THE 3205 ZONE WATER FACILITIES IN HUSITE DRIVE DURING NOVEMBER 1996.

ENGINEER
 STATE OF NEVADA
 CIVIL
 No. 8771
 SEAL

PROJECT NO. 0846
DATE 4-16-96
APPROVED BY RCP/SPA
CHECKED BY CLM
SUBMITTAL BID SET
TYPE PROJECT NO. 95263C

3031

7/5-98



- NOTES:**
1. SEE ARCHITECT'S NOTES FOR GENERAL NOTES.
 2. SEE ARCHITECT'S NOTES FOR GENERAL NOTES.
 3. SEE ARCHITECT'S NOTES FOR GENERAL NOTES.
 4. SEE ARCHITECT'S NOTES FOR GENERAL NOTES.
 5. SEE ARCHITECT'S NOTES FOR GENERAL NOTES.
 6. SEE ARCHITECT'S NOTES FOR GENERAL NOTES.
 7. SEE ARCHITECT'S NOTES FOR GENERAL NOTES.
 8. SEE ARCHITECT'S NOTES FOR GENERAL NOTES.
 9. SEE ARCHITECT'S NOTES FOR GENERAL NOTES.
 10. SEE ARCHITECT'S NOTES FOR GENERAL NOTES.

- NOTES:**
1. SEE ARCHITECT'S NOTES FOR GENERAL NOTES.
 2. SEE ARCHITECT'S NOTES FOR GENERAL NOTES.
 3. SEE ARCHITECT'S NOTES FOR GENERAL NOTES.
 4. SEE ARCHITECT'S NOTES FOR GENERAL NOTES.
 5. SEE ARCHITECT'S NOTES FOR GENERAL NOTES.
 6. SEE ARCHITECT'S NOTES FOR GENERAL NOTES.
 7. SEE ARCHITECT'S NOTES FOR GENERAL NOTES.
 8. SEE ARCHITECT'S NOTES FOR GENERAL NOTES.
 9. SEE ARCHITECT'S NOTES FOR GENERAL NOTES.
 10. SEE ARCHITECT'S NOTES FOR GENERAL NOTES.

NOTES:

1. SEE ARCHITECT'S NOTES FOR GENERAL NOTES.



NOTES:

1. SEE ARCHITECT'S NOTES FOR GENERAL NOTES.

NOTES:

1. SEE ARCHITECT'S NOTES FOR GENERAL NOTES.

NOTES:

1. SEE ARCHITECT'S NOTES FOR GENERAL NOTES.

NOTES:

1. SEE ARCHITECT'S NOTES FOR GENERAL NOTES.

NOTES:

1. SEE ARCHITECT'S NOTES FOR GENERAL NOTES.

NOTES:

1. SEE ARCHITECT'S NOTES FOR GENERAL NOTES.

NOTES:

1. SEE ARCHITECT'S NOTES FOR GENERAL NOTES.

NOTES:

1. SEE ARCHITECT'S NOTES FOR GENERAL NOTES.

NOTES:

1. SEE ARCHITECT'S NOTES FOR GENERAL NOTES.

REVISIONS	
1	ISSUED FOR PERMIT
2	REVISED PER ARCHITECT'S COMMENTS
3	REVISED PER ARCHITECT'S COMMENTS
4	REVISED PER ARCHITECT'S COMMENTS
5	REVISED PER ARCHITECT'S COMMENTS
6	REVISED PER ARCHITECT'S COMMENTS
7	REVISED PER ARCHITECT'S COMMENTS
8	REVISED PER ARCHITECT'S COMMENTS
9	REVISED PER ARCHITECT'S COMMENTS
10	REVISED PER ARCHITECT'S COMMENTS



KEY PLAN

PROJECT INFORMATION	
PROJECT NO.	CL-1000
DATE	10/15/1968
CLIENT	CLARK COUNTY SCHOOL DISTRICT
PROJECT NAME	ALTA/HUALAPAI HIGH SCHOOL
LOCATION	LAS VEGAS, NEVADA



ARCHITECTS

708 VALLE VERDE COLLETS
 HENDERSON, NEVADA 89014
 (702) 458-4800

CLARK COUNTY SCHOOL DISTRICT
 1000 W. WASHINGTON ST., SUITE 100, LAS VEGAS, NV 89102

ALTA/HUALAPAI HIGH SCHOOL
 LAS VEGAS, NEVADA

UTILITY PLAN - AREA B

C6.03