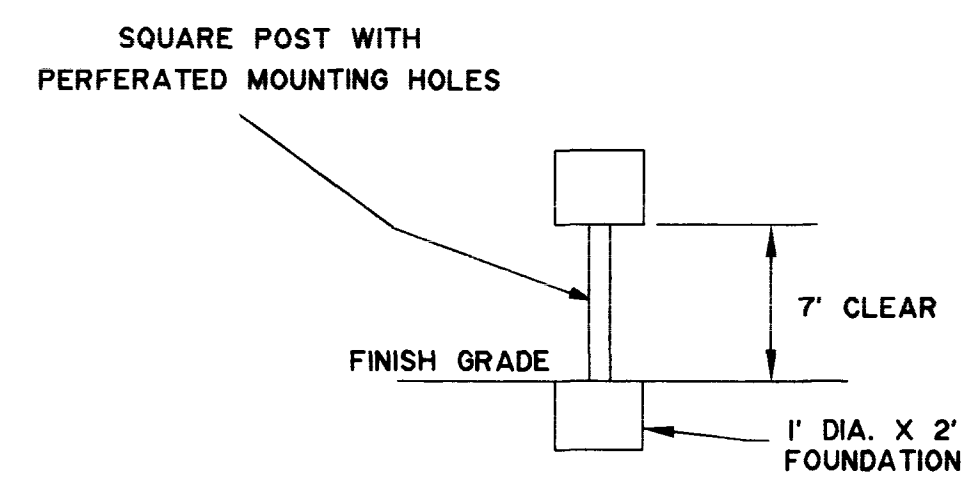


SIGN INSTALLATIONS

SYMBOL	SIGN	DESCRIPTION	TYPICAL MOUNTING	COUNT
SS1		MUTCD SIGN (S1-1) 36" x 36"	SINGLE POST	8
SS2		MUTCD SIGN (S2-1) 36" x 36"	SINGLE POST	8
SS3		MUTCD SIGN (S5-2) 24" x 30"	SINGLE POST	4
SS4		MUTCD SIGN (S5-1) 24" x 48" WITH THE WORDS "X:XX AM TO X:XX PM" IN PLACE OF "WHEN FLASHING"	SINGLE POST	4
(CONTRACTOR SHALL CONFIRM SCHOOL ZONE TIMES AND SCHOOL ZONE SPEEDS WITH CLARK COUNTY SCHOOL DISTRICT AND CITY OF LAS VEGAS PRIOR TO ORDERING MATERIAL)				
P1		MUTCD SIGNS (R8-3A) 12" x 12" AND (M7-5) ARROW BOTH 12" x 9"	SINGLE POST	5
P2		MUTCD SIGNS (R8-3A) 12" x 12" AND (M7-5) ARROW RIGHT 12" x 9"	SINGLE POST	2
P3		MUTCD SIGNS (R8-3A) 12" x 12" AND (M7-5) ARROW LEFT 12" x 9"	SINGLE POST	2

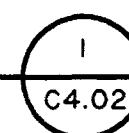
PAVEMENT MARKING SCHEDULE

ITEM	UNIT	C4.03	C4.04	C4.05	TOTAL
COLD POLYMER PAVEMENT MARKING FILM (WHITE)	SF	600	1120	800	2520



SINGLE POST MOUNTING DETAIL

NOTE: INSTALL SIGN POST IN SUCH A MANNER TO PROVIDE A MINIMUM 36" CLEAR PATH ON THE SIDEWALK TO MEET ADA REQUIREMENTS.



GENERAL REQUIREMENTS

- CONSTRUCTION SHALL BE IN CONFORMANCE WITH THE UNIFORM STANDARD SPECIFICATIONS FOR PUBLIC WORKS CONSTRUCTION OFF-SITE IMPROVEMENTS CLARK COUNTY AREA, NEVADA, LATEST EDITION. SPECIFICALLY, SECTIONS 619 "OBJECT MARKERS AND GUIDE POSTS", 627 "PERMANENT SIGNS", 628 "PAINTED TRAFFIC STRIPING, PAVEMENT MARKINGS, AND CURB MARKINGS", 633 "PAVEMENT MARKERS", 714 "PAINT AND PAVEMENT MARKINGS", 716 "SIGN MATERIALS" AND 721 "OBJECT MARKERS AND GUIDE POSTS".
- ALL POSTS SHALL BE GALVANIZED PER ASTM A123.
- SIGN LAYOUTS, LETTERING AND GRAPHICS, UNLESS STATED OTHERWISE, SHALL BE IN CONFORMANCE WITH THE LATEST EDITION OF THE MANUAL ON UNIFORM TRAFFIC CONTROL DEVICES.
- THE SIGN CONTRACTOR SHALL LOCATE SIGNS TO MAXIMIZE SIGHT VISIBILITY.
- SIGN INSTALLATION SHALL BE SECURE AND PERMANENT. ALL MOUNTING HARDWARE SHALL BE APPROVED BY THE ENGINEER.
- THE SIGN LOCATIONS AND MOUNTINGS SHOWN ON THESE PLAN DRAWINGS ARE FOR GENERAL INFORMATION ONLY. THE CONTRACTOR IS TO ARRANGE A MEETING WITH THE OWNER AND THE ENGINEER AT THE SITE TO VERIFY FINAL SIGN LOCATIONS AND MOUNTING TYPE.
- THE CONTRACTOR SHALL PROVIDE ALL LABOR AND MATERIALS NEEDED FOR COMPLETE SIGN INSTALLATIONS.
- IT IS THE INTENT OF THE OWNER TO HAVE THE FINEST SIGNING AND GRAPHICS POSSIBLE FOR THIS PROJECT. THE OWNER RESERVES THE RIGHT TO REJECT ANY UNACCEPTABLE MATERIALS, CONSTRUCTION, FINISHING TECHNIQUES AND WORKMANSHIP.

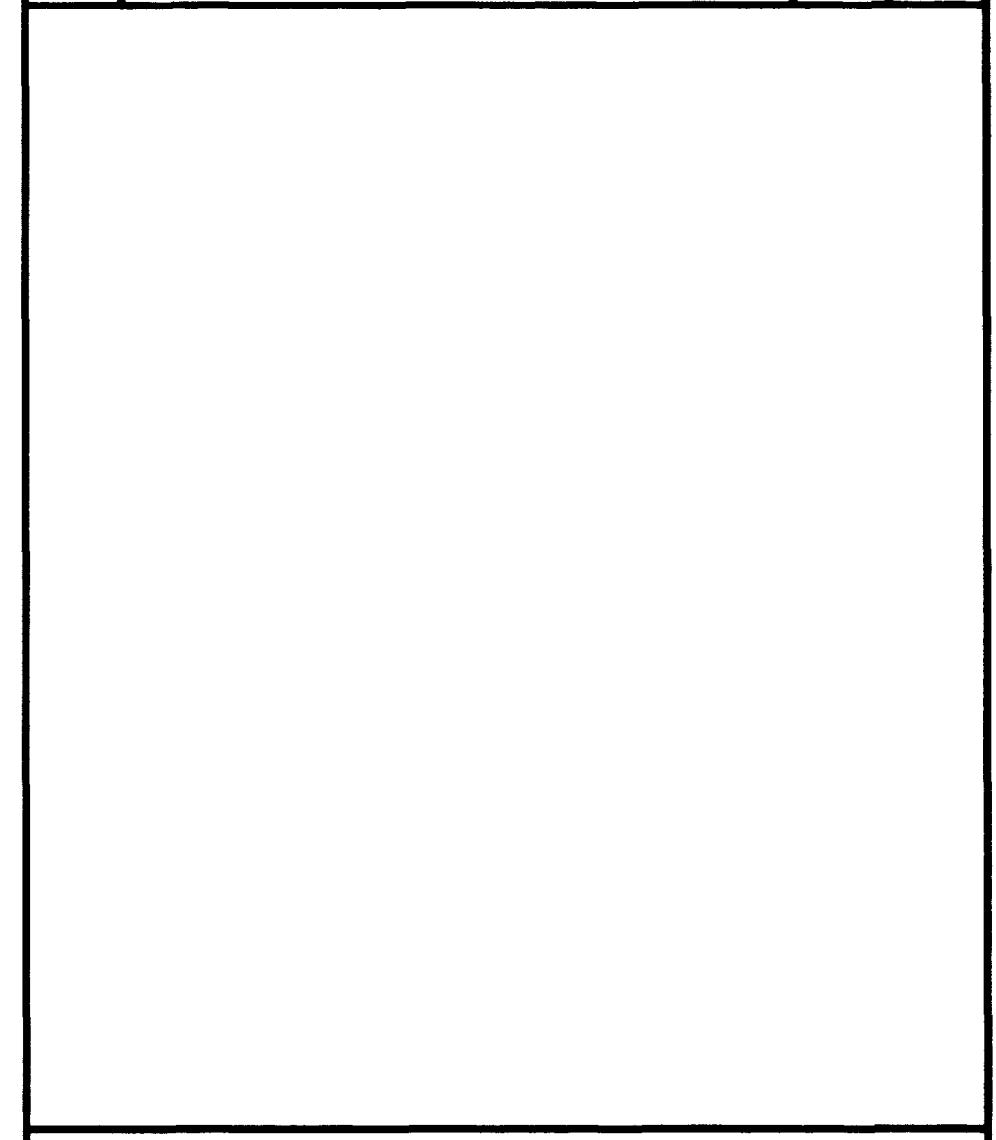
GENERAL NOTES

- THE CONTRACTOR SHALL TAKE ALL PRECAUTIONARY MEASURES NECESSARY TO PROTECT EXISTING IMPROVEMENTS FROM DAMAGE. ALL IMPROVEMENTS OR STRUCTURES DAMAGED BY THE CONTRACTOR'S OPERATIONS SHALL BE REPAIRED OR REPLACED TO THE SATISFACTION OF THE ENGINEER AT THE EXPENSE OF THE CONTRACTOR.
- THE CONTRACTOR SHALL PROVIDE PILOT AND ALIGNMENT LINES FOR THE ENGINEER'S APPROVAL PRIOR TO PERFORMING ANY MARKING WORK. CONTACT THE ENGINEER 48 HOURS IN ADVANCE.
- ALL COLD POLYMER PAVEMENT MARKING FILM SHALL BE TYPE N440 AS MANUFACTURED BY 3M OR APPROVED EQUAL. THE HIGH DURABILITY, INTERSECTION GRADE RETROREFLECTIVE PREFORMED PAVEMENT MARKING FILM, WITH 3 COAT CONTACT CEMENT APPLICATION SYSTEM, SHALL BE APPLIED AND TAMPED IN ACCORDANCE WITH THE MANUFACTURER'S SPECIFICATIONS. THE MANUFACTURER'S REPRESENTATIVE SHALL BE PRESENT AT TIME OF INSTALLATION. ALL APPLICATION METHODS SHALL BE CONFIRMED BY THE ENGINEER AND MANUFACTURER PRIOR TO INSTALLATION. SAID PAVEMENT MARKING FILM SHALL NOT BE PLACED EARLIER THAN TWO (2) WEEKS AFTER FINAL A.C. LAYER IS PLACED. ALL MATERIALS AND EQUIPMENT SHALL BE IN ACCORDANCE WITH THE MANUFACTURER'S SPECIFICATIONS. THE CONTRACTOR SHALL PROVIDE TEMPORARY PAVEMENT MARKINGS AS NEEDED.
- RETURN ALL SALVAGED MATERIAL TO THE CITY OF LAS VEGAS BONANZA YARD, 3100 EAST BONANZA.
- ALL SIGNS SHALL UTILIZE 3M VISUAL IMPACT PERFORMANCE (V.I.P.) REFLECTIVE SHEETING FABRICATED PER MANUFACTURER'S RECOMMENDATIONS. SIGNS SHALL HAVE LETTERING AS DESCRIBED IN TYPICAL SIGN DETAILS. COLORS SHALL BE SERIES 880 AS MANUFACTURED BY 3M AND SHALL BE SCREENED ON THE V.I.P.
- EXACT LOCATION OF ALL SIGNS SHALL BE STAKED BY THE CONTRACTOR FOR REVIEW AND APPROVAL BY THE ENGINEER. NOTIFY TRAFFIC DIVISION 48 HOURS PRIOR TO PERFORMING ANY SIGN INSTALLATION WORK.
- THE GIVEN MUTCD REFERENCE IS TO BE USED FOR GUIDANCE IN MAKING THE SIGNS. VARIATIONS TO THE STANDARD MUTCD SIGN ONLY AFFECT THE SIGN'S LAYOUT AND GRAPHICS. ALL LETTERING SIZES AND SIGN COLORS ARE PER THE GIVEN MUTCD REFERENCE.
- SHEETS C4.02 THRU C4.05 ARE ACCURATE FOR SCHOOL SAFETY SIGNING AND PAVEMENT MARKING WORK ONLY. REFER TO RESPECTIVE SHEETS FOR STREET LIGHTING, TRAFFIC SIGNAL, ROADWAY AND OTHER IMPROVEMENT WORK.
- IF A PROPOSED STREET LIGHT STANDARD IS FIELD LOCATED TO WITHIN FIVE (5) FEET OF ANY SIGN SHOWN HEREON TO BE MOUNTED ON A SIGN POST, THEN CHANGE SIGN MOUNTING TO ONE ON THE STREET LIGHT STANDARD.
- PRIOR TO BEGINNING OF CONSTRUCTION, MODIFICATION, OR RELOCATION OF ANY TRAFFIC SIGNAL SYSTEM, WRITTEN NOTICE SHALL BE SUBMITTED TO THE CITY OF LAS VEGAS TRAFFIC MANAGEMENT DIVISION OF THE DATE THAT WORK WILL BEGIN.

CONSTRUCTION NOTES

- PROVIDE AND INSTALL NEW SIGN(S) WITH "WIDE ANGLE PRISMATIC RETROREFLECTIVE SHEETING FOR VISUAL IMPACT PERFORMANCE" (VIP SHEETING). SIGN(S) SHALL BE MOUNTED PER MANUFACTURER'S SPECIFICATIONS OR AS DIRECTED BY THE ENGINEER.
- INSTALL COLD POLYMER CROSSWALK LINES (10' LONG, 24" WIDE TRANSVERSE LINES SPACED 6' O.C.) SEE GENERAL NOTE 3. EXACT LOCATION TO BE DETERMINED IN THE FIELD BY THE ENGINEER.

REVISIONS			
REV	DESCRIPTION	DATE	BY
1	SHEET ADDED	5.9.96	CPT
2	SHEET REISSUED PER		
3	CITY OF LAS VEGAS COMMENTS	7.3.96	CPT



Kimley-Horn and Associates, Inc.
Las Vegas, Nevada © 1996

PROJECT NO.	0846
CADD REVIEW	
APPROVED BY	
DATE	
DATE	4.16.96
DRAWN BY	CPT
CHECKED BY	
SUBMITAL	
PROJECT NO.	09205501

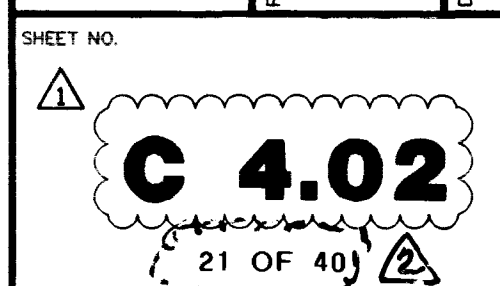
POGEMEYER DESIGN GROUP
PLANNERS ARCHITECTS ENGINEERS
200 NORTH TENAYA WAY LAS VEGAS, NEVADA 89101
PHONE 752-8000

TATE & SNYDER ARCHITECTS
709 VALLE VERDE COURT
HENDERSON NEVADA 89014
(702) 456-3000

CLARK COUNTY SCHOOL DISTRICT
CONSTRUCTION MANAGEMENT DEPARTMENT 4828 S. PEARL STREET 799-7600 LAS VEGAS, NEVADA 89121

ALTA/HUALAPAI HIGH SCHOOL
LAS VEGAS NEVADA

SCHOOL SAFETY SIGNING



SIGN INSTALLATIONS

SYMBOL	SIGN	DESCRIPTION	TYPICAL MOUNTING	COUNT
SS1		SCHOOL SIGN	SINGLE POST	4
SS2		SCHOOL SIGN	SINGLE POST	4
SS3		SCHOOL SIGN	SINGLE POST	4
SS4		SCHOOL SIGN	SINGLE POST	4
		THE SIGN SHALL BE MOUNTED ON A SINGLE POST. THE SIGN SHALL BE MOUNTED ON A SINGLE POST. THE SIGN SHALL BE MOUNTED ON A SINGLE POST.		
P1		PEDESTRIAN CROSSING SIGN	SINGLE POST	4
P2		PEDESTRIAN CROSSING SIGN	SINGLE POST	4
P3		PEDESTRIAN CROSSING SIGN	SINGLE POST	4

PAVEMENT MARKING SCHEDULE

TYPE	ST	SR	SR	SR	SR	SR
PAVEMENT MARKING SCHEDULE	1	1	1	1	1	1

THINK FOR THE PEDESTRIAN SAFETY SIGN



SINGLE POST MOUNTING DETAIL

TO BE USED IN CONJUNCTION WITH THE SIGN INSTALLATION SCHEDULE

GENERAL REQUIREMENTS

1. ALL SIGNS SHALL BE MOUNTED ON A SINGLE POST. THE SIGN SHALL BE MOUNTED ON A SINGLE POST. THE SIGN SHALL BE MOUNTED ON A SINGLE POST.
2. THE SIGN SHALL BE MOUNTED ON A SINGLE POST. THE SIGN SHALL BE MOUNTED ON A SINGLE POST. THE SIGN SHALL BE MOUNTED ON A SINGLE POST.
3. THE SIGN SHALL BE MOUNTED ON A SINGLE POST. THE SIGN SHALL BE MOUNTED ON A SINGLE POST. THE SIGN SHALL BE MOUNTED ON A SINGLE POST.
4. THE SIGN SHALL BE MOUNTED ON A SINGLE POST. THE SIGN SHALL BE MOUNTED ON A SINGLE POST. THE SIGN SHALL BE MOUNTED ON A SINGLE POST.
5. THE SIGN SHALL BE MOUNTED ON A SINGLE POST. THE SIGN SHALL BE MOUNTED ON A SINGLE POST. THE SIGN SHALL BE MOUNTED ON A SINGLE POST.
6. THE SIGN SHALL BE MOUNTED ON A SINGLE POST. THE SIGN SHALL BE MOUNTED ON A SINGLE POST. THE SIGN SHALL BE MOUNTED ON A SINGLE POST.
7. THE SIGN SHALL BE MOUNTED ON A SINGLE POST. THE SIGN SHALL BE MOUNTED ON A SINGLE POST. THE SIGN SHALL BE MOUNTED ON A SINGLE POST.
8. THE SIGN SHALL BE MOUNTED ON A SINGLE POST. THE SIGN SHALL BE MOUNTED ON A SINGLE POST. THE SIGN SHALL BE MOUNTED ON A SINGLE POST.
9. THE SIGN SHALL BE MOUNTED ON A SINGLE POST. THE SIGN SHALL BE MOUNTED ON A SINGLE POST. THE SIGN SHALL BE MOUNTED ON A SINGLE POST.
10. THE SIGN SHALL BE MOUNTED ON A SINGLE POST. THE SIGN SHALL BE MOUNTED ON A SINGLE POST. THE SIGN SHALL BE MOUNTED ON A SINGLE POST.

GENERAL NOTES

1. THE SIGN SHALL BE MOUNTED ON A SINGLE POST. THE SIGN SHALL BE MOUNTED ON A SINGLE POST. THE SIGN SHALL BE MOUNTED ON A SINGLE POST.
2. THE SIGN SHALL BE MOUNTED ON A SINGLE POST. THE SIGN SHALL BE MOUNTED ON A SINGLE POST. THE SIGN SHALL BE MOUNTED ON A SINGLE POST.
3. THE SIGN SHALL BE MOUNTED ON A SINGLE POST. THE SIGN SHALL BE MOUNTED ON A SINGLE POST. THE SIGN SHALL BE MOUNTED ON A SINGLE POST.
4. THE SIGN SHALL BE MOUNTED ON A SINGLE POST. THE SIGN SHALL BE MOUNTED ON A SINGLE POST. THE SIGN SHALL BE MOUNTED ON A SINGLE POST.
5. THE SIGN SHALL BE MOUNTED ON A SINGLE POST. THE SIGN SHALL BE MOUNTED ON A SINGLE POST. THE SIGN SHALL BE MOUNTED ON A SINGLE POST.
6. THE SIGN SHALL BE MOUNTED ON A SINGLE POST. THE SIGN SHALL BE MOUNTED ON A SINGLE POST. THE SIGN SHALL BE MOUNTED ON A SINGLE POST.
7. THE SIGN SHALL BE MOUNTED ON A SINGLE POST. THE SIGN SHALL BE MOUNTED ON A SINGLE POST. THE SIGN SHALL BE MOUNTED ON A SINGLE POST.
8. THE SIGN SHALL BE MOUNTED ON A SINGLE POST. THE SIGN SHALL BE MOUNTED ON A SINGLE POST. THE SIGN SHALL BE MOUNTED ON A SINGLE POST.
9. THE SIGN SHALL BE MOUNTED ON A SINGLE POST. THE SIGN SHALL BE MOUNTED ON A SINGLE POST. THE SIGN SHALL BE MOUNTED ON A SINGLE POST.
10. THE SIGN SHALL BE MOUNTED ON A SINGLE POST. THE SIGN SHALL BE MOUNTED ON A SINGLE POST. THE SIGN SHALL BE MOUNTED ON A SINGLE POST.

CONSTRUCTION NOTES

1. THE SIGN SHALL BE MOUNTED ON A SINGLE POST. THE SIGN SHALL BE MOUNTED ON A SINGLE POST. THE SIGN SHALL BE MOUNTED ON A SINGLE POST.
2. THE SIGN SHALL BE MOUNTED ON A SINGLE POST. THE SIGN SHALL BE MOUNTED ON A SINGLE POST. THE SIGN SHALL BE MOUNTED ON A SINGLE POST.
3. THE SIGN SHALL BE MOUNTED ON A SINGLE POST. THE SIGN SHALL BE MOUNTED ON A SINGLE POST. THE SIGN SHALL BE MOUNTED ON A SINGLE POST.

NO.	REVISION	DATE	BY
1	ISSUE FOR BIDDING		
2	REVISED PER COMMENTS		
3	REVISED PER COMMENTS		
4	REVISED PER COMMENTS		
5	REVISED PER COMMENTS		
6	REVISED PER COMMENTS		
7	REVISED PER COMMENTS		
8	REVISED PER COMMENTS		
9	REVISED PER COMMENTS		
10	REVISED PER COMMENTS		

Delaware
and Associates, Inc.

Las Vegas, Nevada

DATE: _____

BY: _____

FOR: _____

CLARK COUNTY SCHOOL DISTRICT

ALTA/MULALAI HIGH SCHOOL

NEVADA

SCHOOL SAFETY SIGNING

CONTRACTOR

700 WALLS VERBIC COURT
ATLANTIC CITY, NJ 08401
(609) 426-1021

CLARK COUNTY SCHOOL DISTRICT

ALTA/MULALAI HIGH SCHOOL

NEVADA

SCHOOL SAFETY SIGNING

408